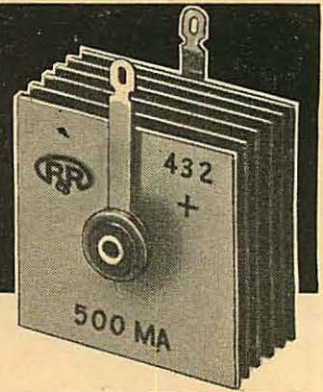




General Instrument  
Semiconductors

**RADIO RECEPTOR  
SELENIUM  
RECTIFIERS**

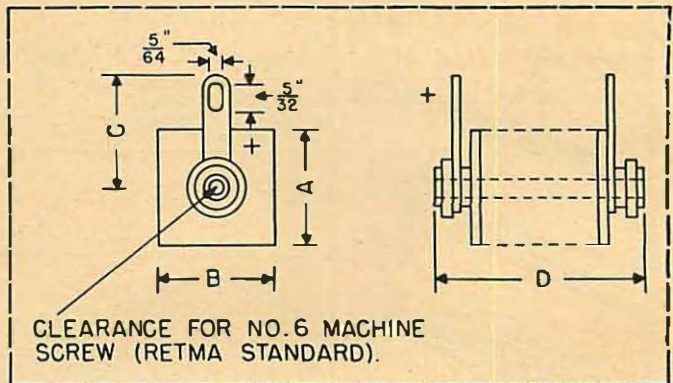


**Radio and TV Types**

MAX. D. C. OUTPUT MA.	CATALOG NO.	MAX. A. C. INPUT VOLTS	MIN. SERIES RESISTOR (OHMS)	MAX. PEAK INVERSE VOLTAGE	A (INCHES)	B (INCHES)	C (INCHES)	D (INCHES)
150	6GA150	130	7.5	380	1	1	1 1/8	1 1/8
175	6GA175	130	5.	380	1	1	1 3/8	1 3/8
200	6GA200	130	5.	380	1	1	2	2 5/16
200	8GA200	130	5.	380	1.13	1.13	1 1/8	1 1/8
250	8GA250	130	5.	380	1.13	1.13	1 3/8	1 3/8
300	8GA300	130	5.	380	1.13	1.13	2	2 5/16
300	11GA300	130	5.	380	1.3	1.3	1 3/8	1 3/8
350	11GA350	130	5.	380	1.3	1.3	2	2 5/16
400	11GA400	130	5.	380	1.3	1.3	2 1/4	2 5/16
400	16GA400	130	5.	380	1.6	1.6	1 3/8	1 3/8
450	16GA450	130	3.	380	1.6	1.6	1 3/4	2 1/16
500	16GA500	130	3.	380	1.6	1.6	2	2 5/16
550	16GA550	130	3.	380	1.6	1.6	2 1/4	2 5/16
600	16GA600	130	3.	380	1.6	1.6	2 1/2	2 7/16
750	25GA750	130	3.	380	2	2	2 1/2	2 9/16
25	16Y1	260	47	760	1/2	1/2	1 1/31	7/8
30	8Y1	130	47	380	1/2	1/2	1 1/32	1/2
65	8J1	130	33	380	1 1/16	1 1/16	1 1/32	1/2
65	16J1	260	33	720	1 1/16	1 1/16	1 1/32	1/2
75	6M1	156	22	456	1	1	1 5/16	1/8
100	6M2	156	22	456	1	1	1 5/16	1 1/8

If locking lug is required, add suffix "L" to catalog number, i.e. 6GA150L.  
The ratings above are for half-wave capacitive load.

Radio Receptor rectifiers, designed and tested to eliminate arc-over danger, short circuits and heating at the center contact point, have underwriters laboratories acceptance for operation at a cell temperature of 85° C. This "safe center" feature combined with long life and lower forward drop at high current densities gives you a rectifier years ahead in design.



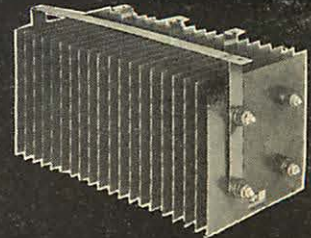
**GENERAL INSTRUMENT DISTRIBUTOR DIVISION**  
General Instrument Corporation

See Additional Radio Receptor—General Instrument Diodes, Semiconductors and Rectifiers on Pages 1433 to 1435



General Instrument  
Semiconductors

**RADIO RECEPTOR**  
*Tri-Amp*  
**RECTIFIERS**



**INDUSTRIAL TYPE POWER UNITS—SINGLE PHASE FULL WAVE**

OUTPUT DC VOLTS	MAX. OUTPUT DC AMPS	MAX. IN-PUT AC VOLTS	CKT	CATALOG NO.	NO. OF MTG. STUDS	CELL SIZE INCHES	OUTPUT DC VOLTS	MAX. OUTPUT DC AMPS	MAX. IN-PUT AC VOLTS	CKT	CATALOG NO.	NO. OF MTG. STUDS	CELL SIZE INCHES
0-10	0.6	26	C.T. †	C301*	1	1" sq.	0.63	18	78	BR.	C347	1	4 x 5.3
	1.5			G302*	1	1.3 sq.		C348			2	4 x 8	
	2.2			C303*	1	1.6 sq.		C349			3	4 x 12	
	3.4			C304*	1	2 sq.		C350			4	8 sq.	
	6.6			C305*	1	2.6 sq.		C351			4	8 x 12	
	9			C306	1	2.3 x 4		C352			4	8 x 16	
	12			C307	1	4 sq.							
	18			C308	1	4 x 5.3							
	24			C309	2	4 x 8							
	36			C310	3	4 x 12							
	48			C311	4	8 sq.							
	70			C312	4	8 x 12							
	90			C313	4	8 x 16							
0-21	0.6	26	BR.	C314	1	1 sq.	0-84	12	104	BR.	C353	1	1 sq.
	1.5			C315	1	1.3 sq.		C354			1	1.3 sq.	
	2.2			C316	1	1.6 sq.		C355			1	1.6 sq.	
	3.4			C317	1	2 sq.		C356			1	2 sq.	
	6.6			C318	1	2.6 sq.		C357			1	2.6 sq.	
	9			C319	1	2.3 x 4		C358			1	2.3 x 4	
	12			C320	1	4 sq.		C359			1	4 sq.	
	18			C321	1	4 x 5.3		C360			1	4 x 5.3	
	24			C322	2	4 x 8		C361			2	4 x 8	
	36			C323	3	4 x 12		C362			3	4 x 12	
	48			C324	4	8 sq.		C363			4	8 sq.	
	70			C325	4	8 x 12		C364			4	8 x 12	
	90			C326	4	8 x 16		C365			4	8 x 16	
0-41	0.6	52	BR.	C327	1	1 sq.	0-106	12	130	BR.	C366	1	1 sq.
	1.5			C328	1	1.3 sq.		C367			1	1.3 sq.	
	2.2			C329	1	1.6 sq.		C368			1	1.6 sq.	
	3.4			C330	1	2 sq.		C369			1	2 sq.	
	6.6			C331	1	2.6 sq.		C370			1	2.6 sq.	
	9			C332	1	2.3 x 4		C371			1	2.3 x 4	
	12			C333	1	4 sq.		C372			1	4 sq.	
	18			C334	1	4 x 5.3		C373			1	4 x 5.3	
	24			C335	2	4 x 8		C374			2	4 x 8	
	36			C336	3	4 x 12		C375			3	4 x 12	
	48			C337	4	8 sq.		C376			4	8 sq.	
	70			C338	4	8 x 12		C377			4	8 x 12	
	90			C339	4	8 x 16		C378			4	8 x 16	
0-63	0.6	78	BR.	C340	1	1 sq.	0-127	12	156	BR.	C379	1	1 sq.
	1.5			C341	1	1.3 sq.		C380			1	1.3 sq.	
	2.2			C342	1	1.6 sq.		C381			1	1.6 sq.	
	3.4			C343	1	2 sq.		C382			1	2 sq.	
	6.6			C344	1	2.6 sq.		C383			1	2.6 sq.	
	9			C345	1	2.3 x 4		C384			1	2.3 x 4	
	12			C346	1	4 sq.		C385			1	4 sq.	
								C386			1	4 x 5.3	
				C387	2	4 x 8							
				C388	3	4 x 12							
				C389	4	8 sq.							
				C390	4	8 x 12							
				C391	4	8 x 16							

NOTES:

Mounting brackets are available for the above types, except for the 4 x 8 cell size and larger.

\*These units use one bracket; all others require two.

†Across outer legs of center tap connection.

Mounting studs are centrally located on the cell and where more than one is used the measurement is 3 3/4" between centers. A 10-32 stud is

used with cell sizes up to 2.6" square and a 5/16-18 stud is used with the larger cell sizes;

The stacks shown above are adaptable for a wide range of common applications. The ratings are for stacks mounted with cells in a vertical position with normal convection cooling, and in a maximum ambient temperature of 35° C (95° F) with a resistive or inductive load. Many other types are available for special requirements.



**GENERAL INSTRUMENT DISTRIBUTOR DIVISION**  
General Instrument Corporation

See Additional Radio Receptor—General Instrument Diodes, Semiconductors and Rectifiers on Pages 1433 to 1435