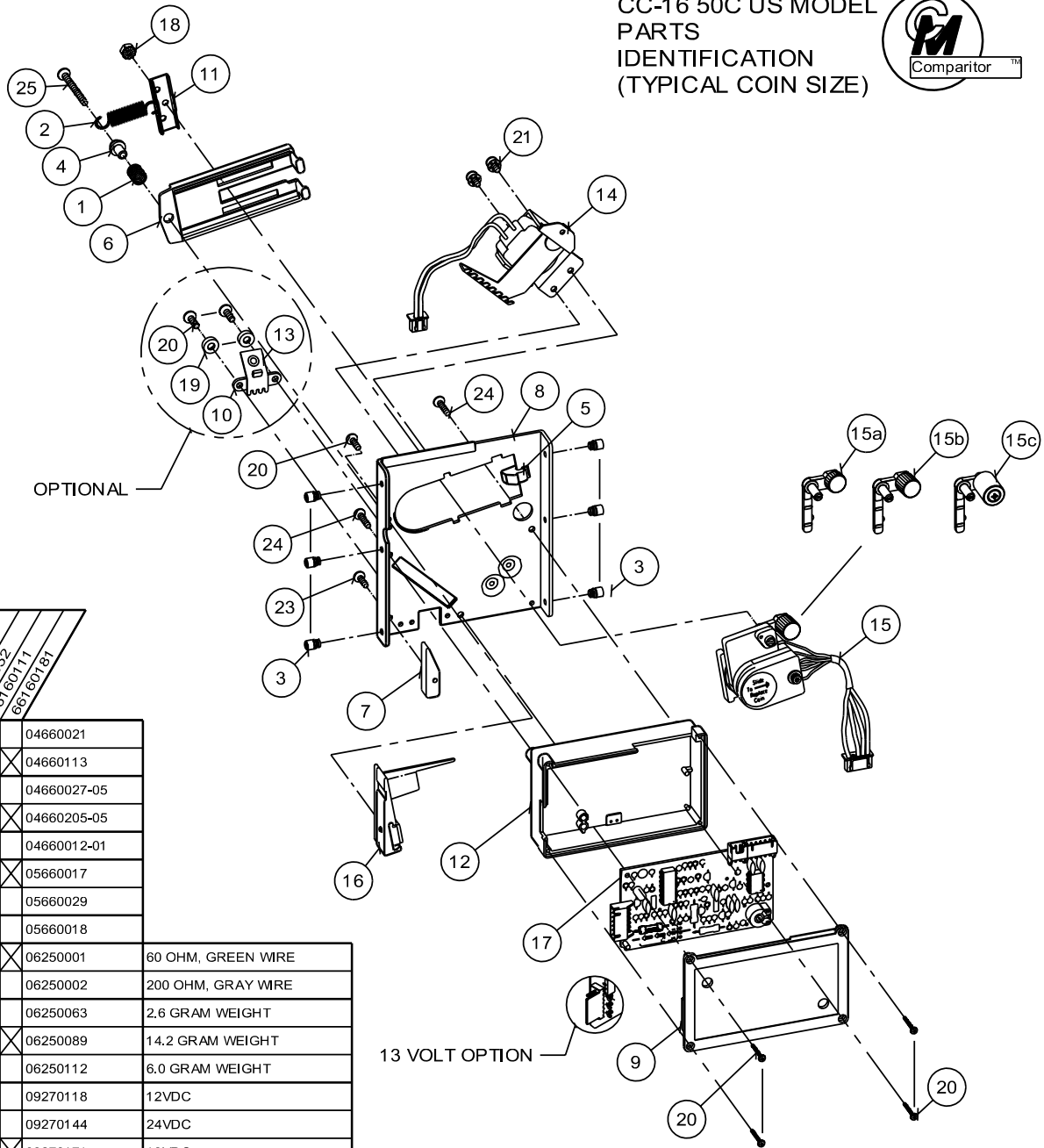


CC-16 50C US MODEL
PARTS
IDENTIFICATION
(TYPICAL COIN SIZE)



ITEM NO.
661 600 01
661 600 02
661 601 11
661 601 81

7			04660021	
			04660113	
8			04660027-05	
			04660205-05	
10			04660012-01	
12			05660017	
			05660029	
13			05660018	
14			06250001	60 OHM, GREEN WIRE
			06250002	200 OHM, GRAY WIRE
15			06250063	2.6 GRAM WEIGHT
			06250089	14.2 GRAM WEIGHT
			06250112	6.0 GRAM WEIGHT
17			09270118	12VDC
			09270144	24VDC
			09270171	13VDC
19			600-6-1	

MATERIAL COLUMN

ITEM	P/N	QTY	MATL DESCRIPTION	ITEM	P/N	QTY	MATL DESCRIPTION
1	04050027	1	SPRING, COMPRESSION, COIL RETAINER	15	0625XXXX	1	COIL, ASSY, SENSOR
2	04050031	1	SPRING, EXTENSION, 1-1/16, COIL LOCKING	15a	06660012	—	DAMPNER & WEIGHT, ASSY, 2.6G, DBL NUT
3	04060005-01	6	STUD, #6 MTG	15b	06660013	—	DAMPNER & WEIGHT, ASSY, 6G, DBL NUT
4	04060052-01	1	BUSHING, SPRING, RETAINING	15c	06660014	—	DAMPNER & WEIGHT, ASSY, 14.2G, DBL NUT
5	04660002	1	STOP, SENSING COIL SAFETY	16	06660038	1	RAIL, ASSY, SM RAIL, STD INSERT
6	04660030	1	SHIELD, SENSOR COIL, RETAINING	17	0927XXXX	1	PCB, CTRL
7	0466XXXX	1	SPACER, COIN EXIT,	18	436-4	1	NUT, 4-40, HEX, KEPS
8	04660027-05	1	MAINPLATE, W/ANTI-CHEAT NOTCH	19	600-6-1	2	WASHER, FLAT DOUBLE, DBL THICKNESS, #6
9	04660098	1	COVER, PCB	20	P-104-4-3	A/R	SCREW, 4-40 X 3/16, PHIL, PH, MS
10	04660012-01	1	RETAINER, ANTI-STRINGING LEVER	21	P-186-4-3	2	SCREW, 4-40 X 3/16, PHIL, SEMS WASHER
11	04660062-01	1	BRKT, COIL LOCKING	22	P-217-2-5	4	SCREW, 2 X 5/16, PHIL, PH, HI-LO
12	0566XXXX	1	HSG, ASSY, PCB,	23	P-221-4-3	1	SCREW, 4 X 3/16, PHILTYPE 45 PLASTITE
13	05660018	1	LEVER, ASSY, ANTI-STRINGING	24	P-221-4-4	2	SCREW, 4 X 1/4, PHILTYPE 45 PLASTITE
14	0625XXXX	1	COIL & BRKT, ASSY	25	P-221-4-12	1	SCREW, 4 X 3/4, PHILTYPE 45 PLASTITE



COIN MECHANISMS INC.

P.O. Box 5128, Glendale Heights, IL 60139-5128 • 800/323-6498 • FAX 630/924-7088
E-MAIL coinmech@coinmech.com VISIT OUR WEBSITE AT www.coinmech.com

P/N 29300121-7/03 (R1 7230)