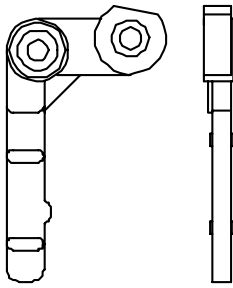
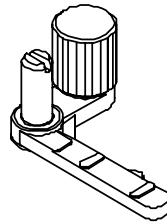


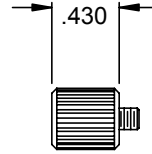
Standard coin damper levers



P/N 05660021 (BLACK)
USED ON STANDARD
COIN OR MICRO
COMPARITORS

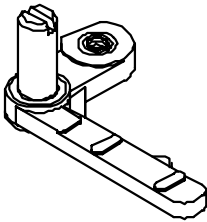


Ø .389

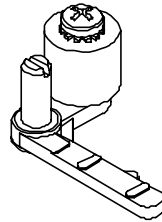


6.0 GRAM ASSY
P/N 06660013
DAMPER LEVER
P/N 05660021

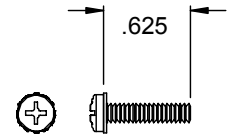
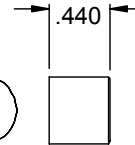
P/N 04060039-01
WEIGHT, DAMPER, 6.0
GRAM - CLEAR FINISH



NO WEIGHT
P/N 06660024
DAMPER LEVER
P/N 05660021



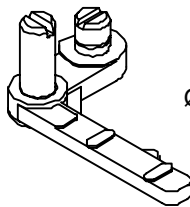
Ø .480



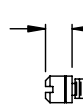
9.0 GRAM ASSY
P/N 06660102
DAMPER LEVER
P/N 05660021

P/N 04060083-02
WEIGHT, DAMPER, 9.0 GRAM
YELLOW FINISH

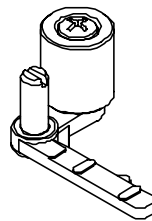
P/N P-166-6-10
SCREW, 6-32 X 5/8,
PHIL, PH, W/SEMS



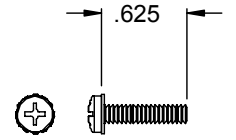
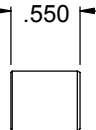
Ø .187



.183
.175



Ø .480



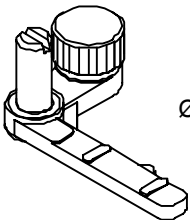
10.6 GRAM ASSY
P/N 06660056
DAMPER LEVER
P/N 05660021

P/N 04060081-02
WEIGHT, DAMPER, 10.6 GRAM
YELLOW FINISH

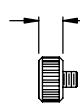
P/N P-166-6-10
SCREW, 6-32 X 5/8,
PHIL, PH, W/SEMS

0.7 GRAM ASSY
P/N 06660051
DAMPER LEVER
P/N 05660021

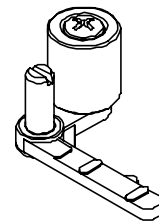
P/N 04060005-01
STUD, #6 MTG, 0.7 GRAM
CLEAR FINISH



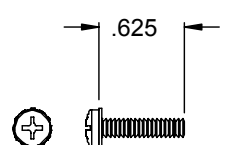
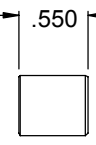
Ø .389



.205



Ø .500



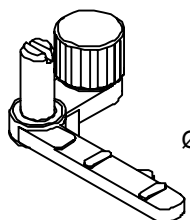
12.0 GRAM ASSY
P/N 06660046
DAMPER LEVER
P/N 05660021

P/N 04060080-02
WEIGHT, DAMPER, 12 GRAM
YELLOW FINISH

P/N P-166-6-10
SCREW, 6-32 X 5/8,
PHIL, PH, W/SEMS

2.6G ASSY
P/N 06660012
DAMPER LEVER
P/N 05660021

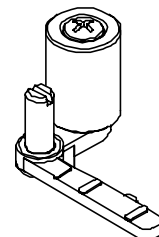
P/N 04060038-01
WEIGHT, DAMPER, 2.6
GRAM - CLEAR FINISH



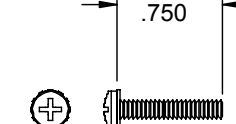
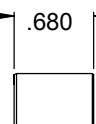
Ø .389



.280



Ø .500



14.2 GRAM ASSY
P/N 06660014
DAMPER LEVER
P/N 05660021

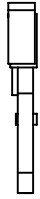
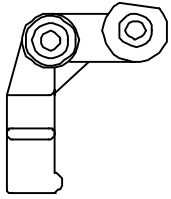
P/N 04060040-01
WEIGHT, DAMPER, 14 GRAM
CLEAR FINISH

P/N P-166-6-12
SCREW, 6-32 X 3/4,
PHIL, PH, W/SEMS

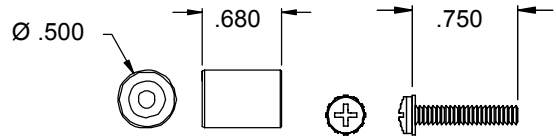
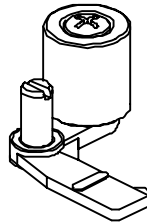
4.0 GRAM ASSY
P/N 06660101
DAMPER LEVER
P/N 05660021

P/N 04060084-02
WEIGHT, DAMPER, 4.0
GRAM - YELLOW FINISH

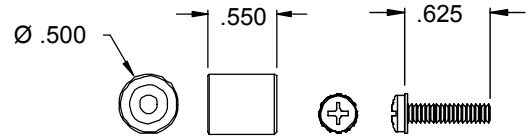
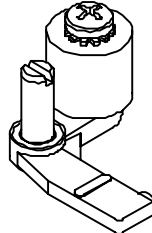
Thick coin damper levers



P/N 05660043 (WHITE)
 USED ON THICK, LARGE
 DIAMETER (GREATER
 THAN Ø1.500")
 COIN OR MICRO
 COMPARITORS
 WB'S, CC-36/37'S

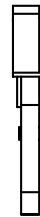
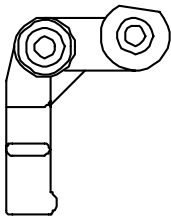


14.2 GRAM ASSY P/N 04060040-01 P/N P-166-6-12
 P/N 06660076 WEIGHT, DAMPER, SCREW, 6-32 X 3/4,
 DAMPER LEVER 14 GRAM PHIL, PH, W/SEMS
 P/N 05660043 CLEAR FINISH

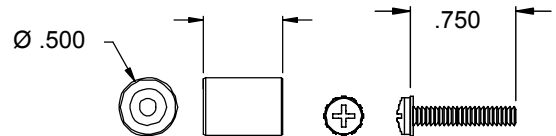
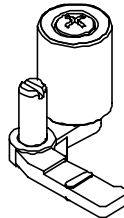


9.0 GRAM ASSY P/N 04060083-02 P/N P-166-6-10
 P/N 06660107 WEIGHT, DAMPER, SCREW, 6-32 X 5/8,
 DAMPER LEVER 9 GRAM PHIL, PH, W/SEMS
 P/N 05660043 YELLOW FINISH

\$1 coin damper levers

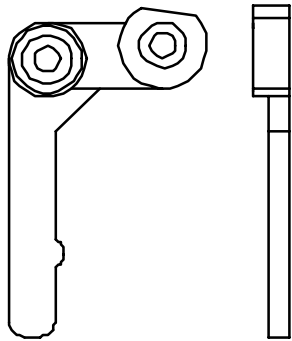


P/N 05660055 (BLACK)
 USED ON U.S. CASINO \$1
 COIN OR MICRO
 COMPARITORS
 CC-16'S, CC-32/33'S, MC'S

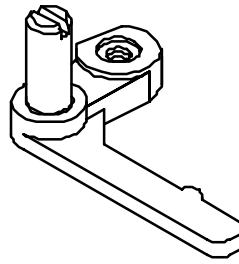


14.2 GRAM ASSY P/N 04060040-01 P/N P-166-6-12
 P/N 06660120 WEIGHT, DAMPER, SCREW, 6-32 X 3/4,
 DAMPER LEVER 14 GRAM PHIL, PH, W/SEMS
 P/N 05660055 CLEAR FINISH

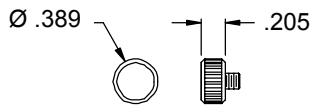
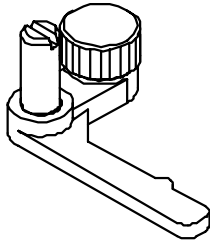
Thin coin damper levers



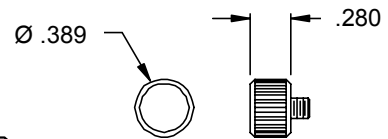
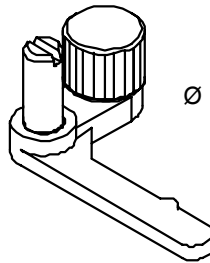
P/N 05660054 (BLACK)
 USED ON *THIN COIN*
 COIN OR MICRO
 COMPARITORS
 5¢, 10¢, 25¢



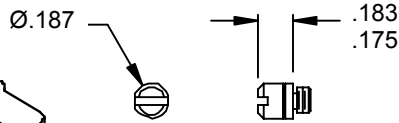
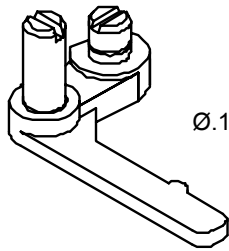
NO WEIGHT
 P/N 06660124
 DAMPER LEVER
 P/N 05660054



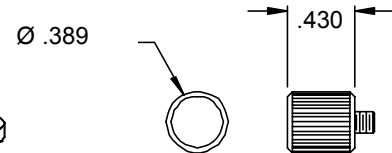
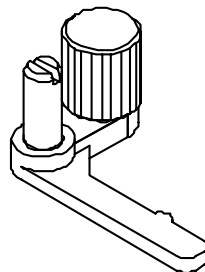
2.6 GRAM ASSY P/N 04060038-01
 P/N 06660111 WEIGHT, DAMPER,
 DAMPER LEVER 2.6 GRAM
 P/N 05660054 CLEAR FINISH



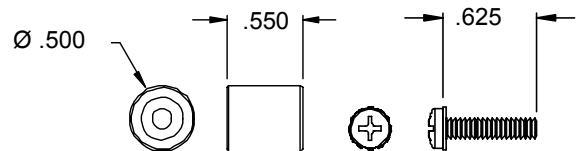
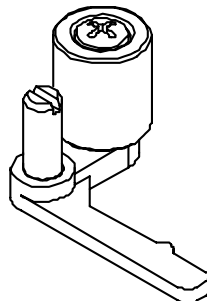
4.0 GRAM ASSY P/N 04060084-02
 P/N 06660117 WEIGHT, DAMPER,
 DAMPER LEVER 4.0 GRAM
 P/N 05660054 YELLOW FINISH



0.7 GRAM ASSY P/N 04060005-01
 P/N 06660122 STUD, #6 MTG, 0.7 GRAM
 DAMPER LEVER CLEAR FINISH
 P/N 05660054



6.0 GRAM ASSY P/N 04060039-01
 P/N 06660115 WEIGHT, DAMPER, 6.0
 DAMPER LEVER GRAM - CLEAR FINISH
 P/N 05660054



9.0 GRAM ASSY P/N 04060083-02
 P/N 06660123 WEIGHT, DAMPER,
 DAMPER LEVER 9 GRAM
 P/N 05660054 YELLOW FINISH

P/N P-166-6-10
 SCREW, 6-32 X 5/8,
 PHIL, PH, W/SEMS