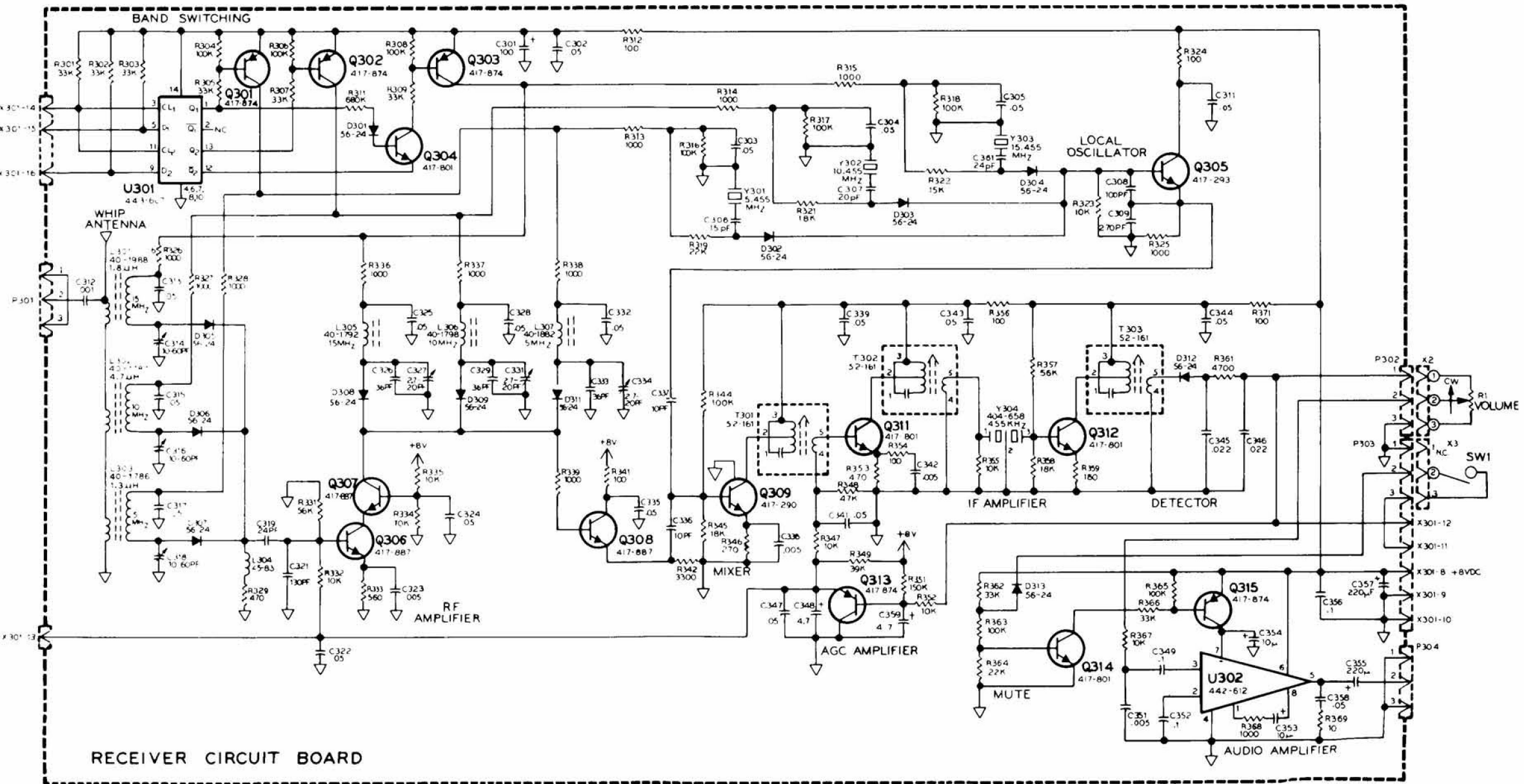


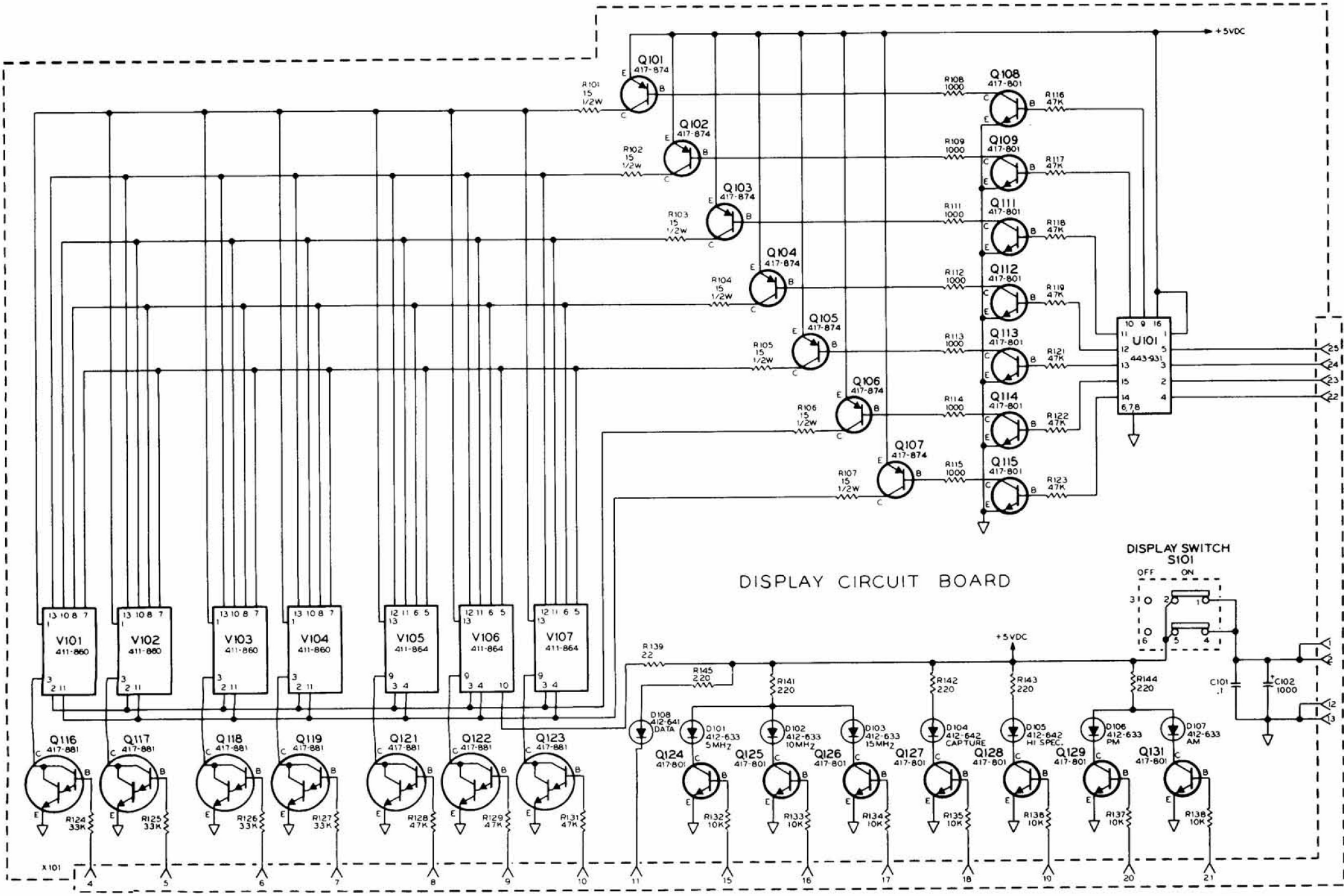
**SCHEMATIC OF THE HEATHKIT® MOST ACCURATE CLOCK MODEL GC-1000-H**

- NOTES:**
- COMPONENT NUMBERS ARE IN THE FOLLOWING GROUPS.
    - 1-99 PARTS ON THE CABINET.
    - 101-199 PARTS ON THE DISPLAY CIRCUIT BOARD.
    - 201-299 PARTS ON THE MAIN DECODER CIRCUIT BOARD.
    - 301-399 PARTS ON THE RECEIVER CIRCUIT BOARD.
    - 401-499 PARTS ON THE TONE DECODER CIRCUIT BOARD.
    - 501-502 PARTS ON THE TEST CIRCUIT BOARD.
  - ALL RESISTORS ARE 1/4-WATT, 5%, UNLESS STATED OTHERWISE. RESISTOR VALUES ARE IN OHMS (K=1000, M=1,000,000).
  - CAPACITORS ARE IN μF (MICROFARADS) UNLESS STATED OTHERWISE.
  - THIS SYMBOL INDICATES A DC VOLTAGE MEASURED WITH A HIGH IMPEDANCE INPUT VOLTMETER FROM THE POINT INDICATED TO CIRCUIT BOARD GROUND.
  - THIS SYMBOL INDICATES A CIRCUIT BOARD WIRE CONNECTION POINT.
  - THIS SYMBOL INDICATES A CIRCUIT BOARD GROUND.
  - REFER TO THE 'X-RAY VIEWS' FOR THE PHYSICAL LOCATION OF PARTS.
  - PARTS IN SHADED AREAS ARE CRITICAL FOR CONTINUED SAFETY. REPLACE THEM ONLY WITH PARTS OF THE SAME RATING OR WITH THE PROPER HEATH PARTS.

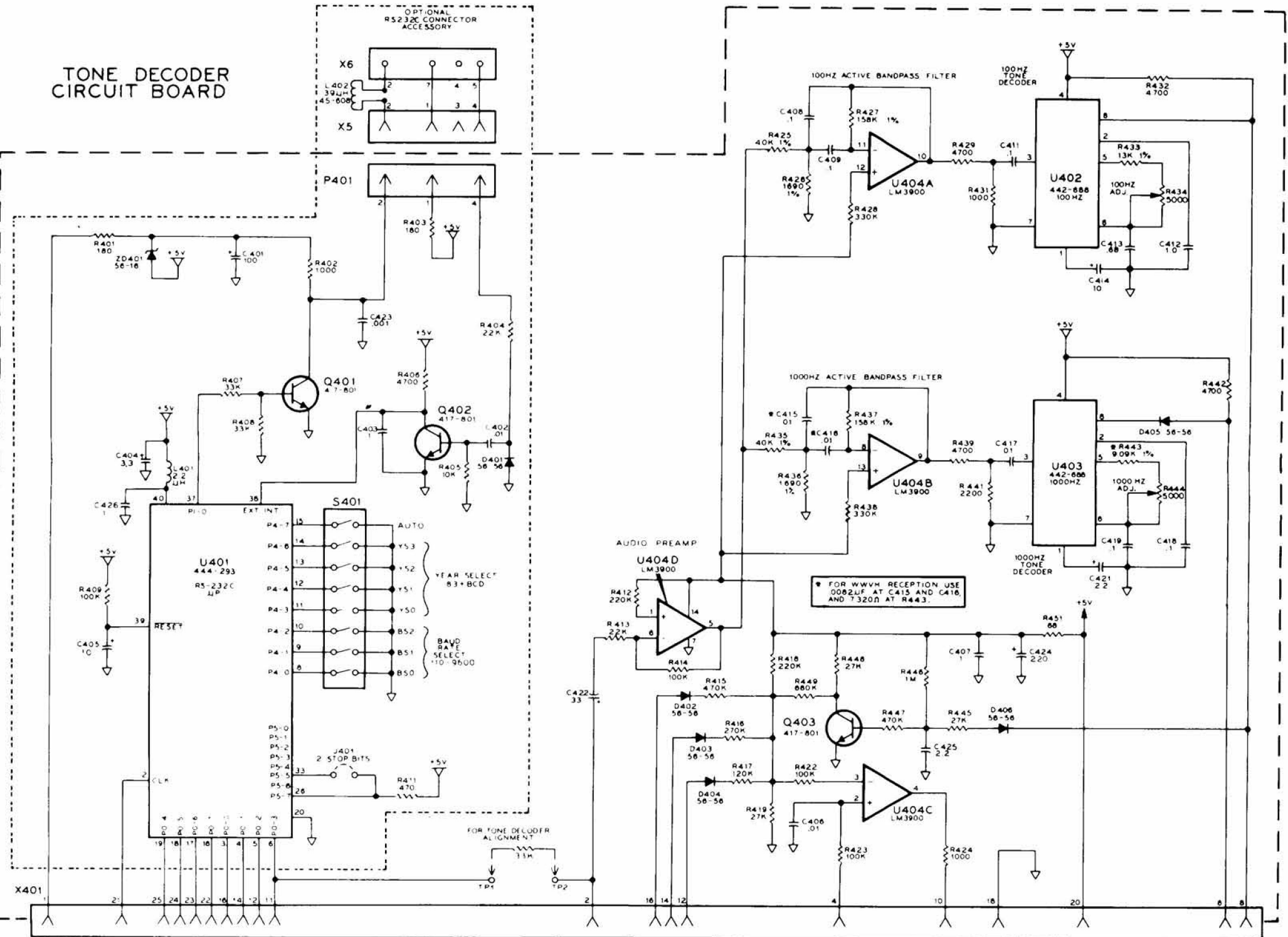




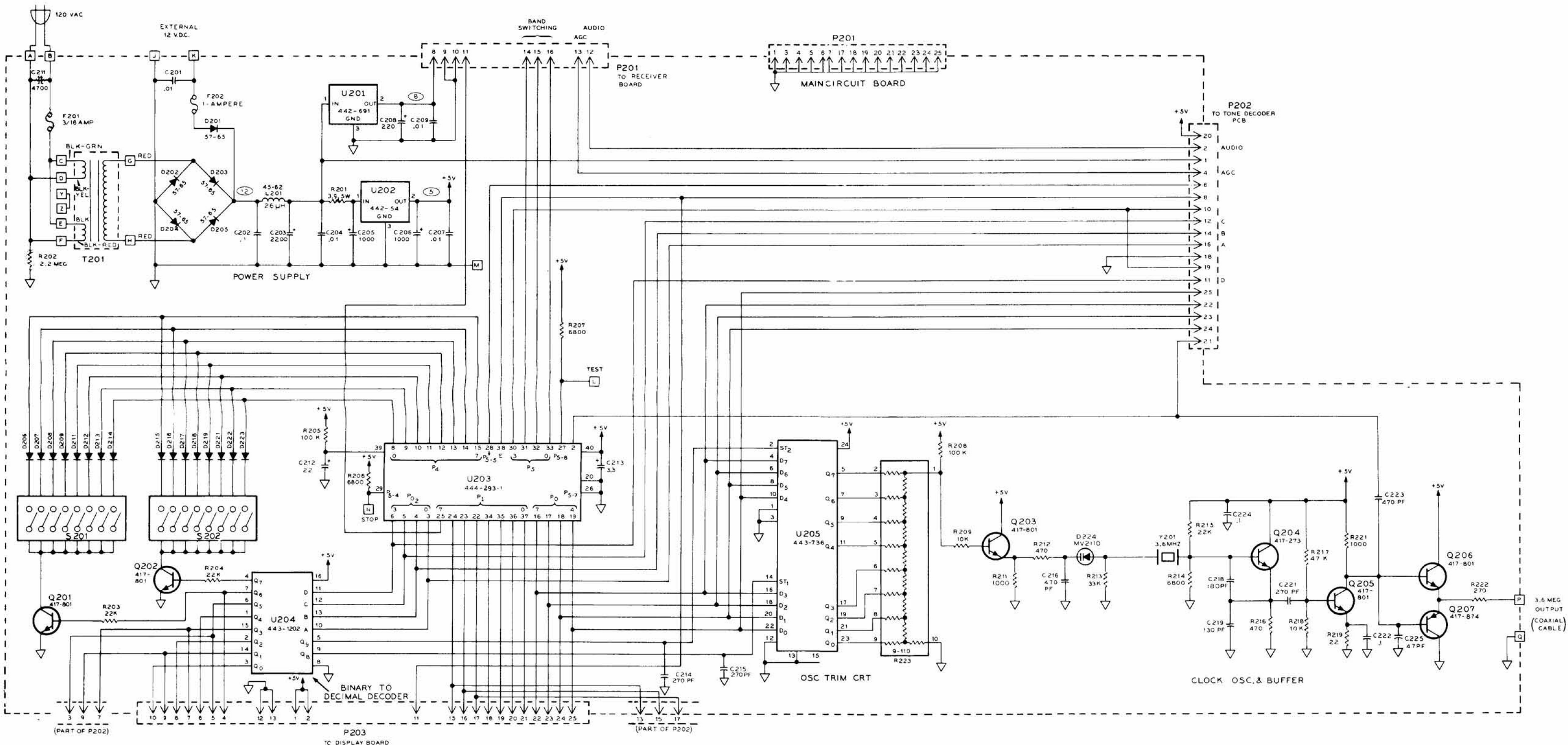
RECEIVER CIRCUIT BOARD

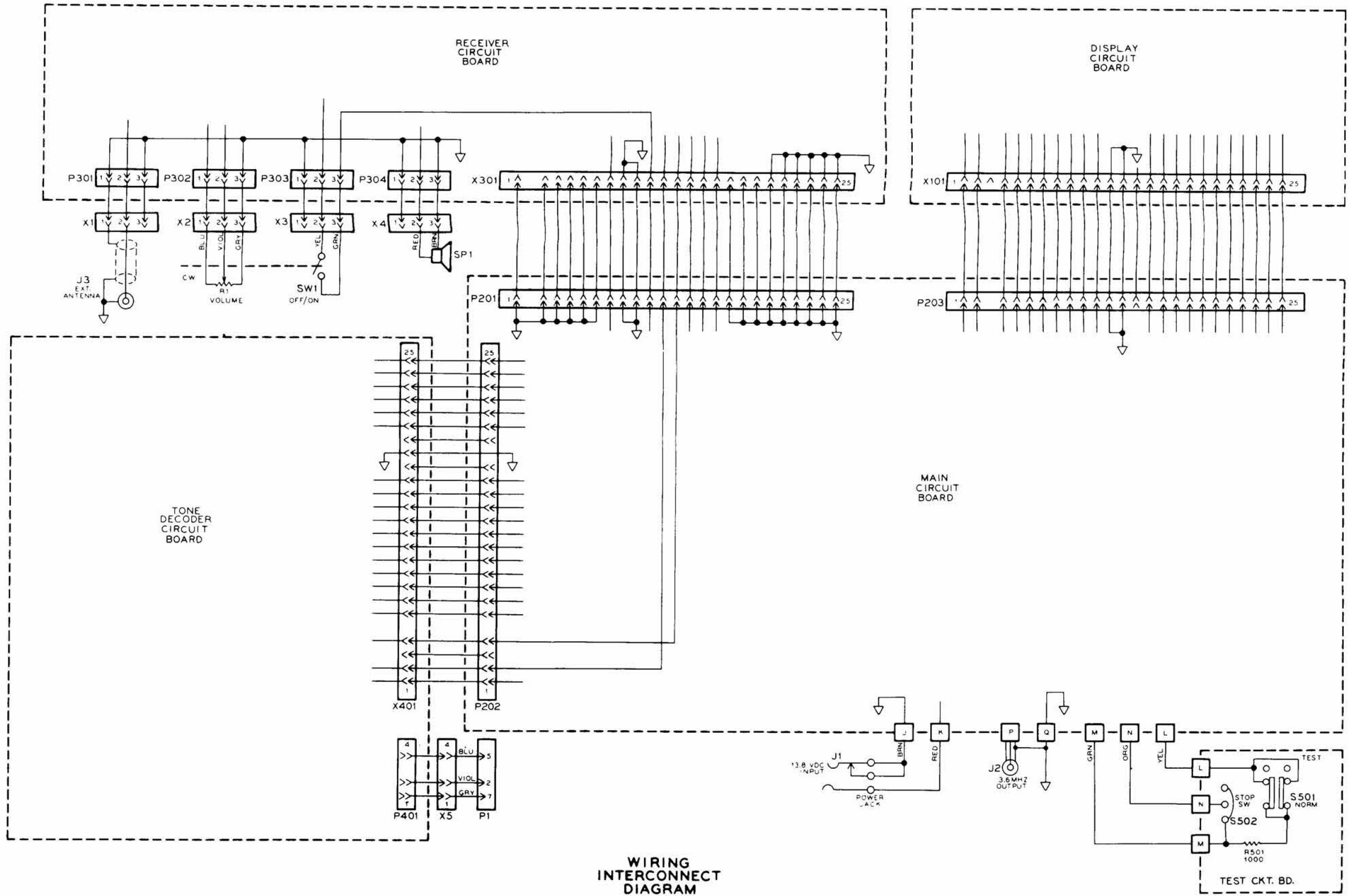


# TONE DECODER CIRCUIT BOARD












WIRING INTERCONNECT DIAGRAM

**SCHEMATIC OF THE  
HEATHKIT®  
MOST ACCURATE CLOCK  
MODEL GC-1000-H**

**NOTES:**

1. COMPONENT NUMBERS ARE IN THE FOLLOWING GROUPS.
  - 1- 99 PARTS ON THE CABINET.
  - 101-199 PARTS ON THE DISPLAY CIRCUIT BOARD.
  - 201-299 PARTS ON THE MAIN DECODER CIRCUIT BOARD.
  - 301-399 PARTS ON THE RECEIVER CIRCUIT BOARD.
  - 401-499 PARTS ON THE TONE DECODER CIRCUIT BOARD.
  - 501-502 PARTS ON THE TEST CIRCUIT BOARD.
2. ALL RESISTORS ARE 1/4-WATT, 5%, UNLESS STATED OTHERWISE. RESISTORS VALUES ARE IN OHMS (K=1000,M=1,000,000).
3. CAPACITORS ARE IN  $\mu$ F (MICROFARADS) UNLESS STATED OTHERWISE.
4.  THIS SYMBOL INDICATES A DC VOLTAGE MEASURED WITH A HIGH IMPEDANCE INPUT VOLTMETER FROM THE POINT UNDCATED TO CIRCUIT BOARD GROUND.
5.  THIS SYMBOL INDICATES A CIRCUIT BOARD WIRE CONNECTION POINT.
6.  THIS SYMBOL INDICATES A CIRCUIT BOARD GROUND.
7. REFER TO THE "X-RAY VIEWS" FOR THE PHYSICAL LOCATION OF PARTS.
8. PARTS IN SHADED AREAS ARE CRITICAL FOR CONTINUED SAFETY. REPLACE THEM ONLY WITH PARTS OF THE SAME RATING OR WITH THE PROPER HEATH PARTS.