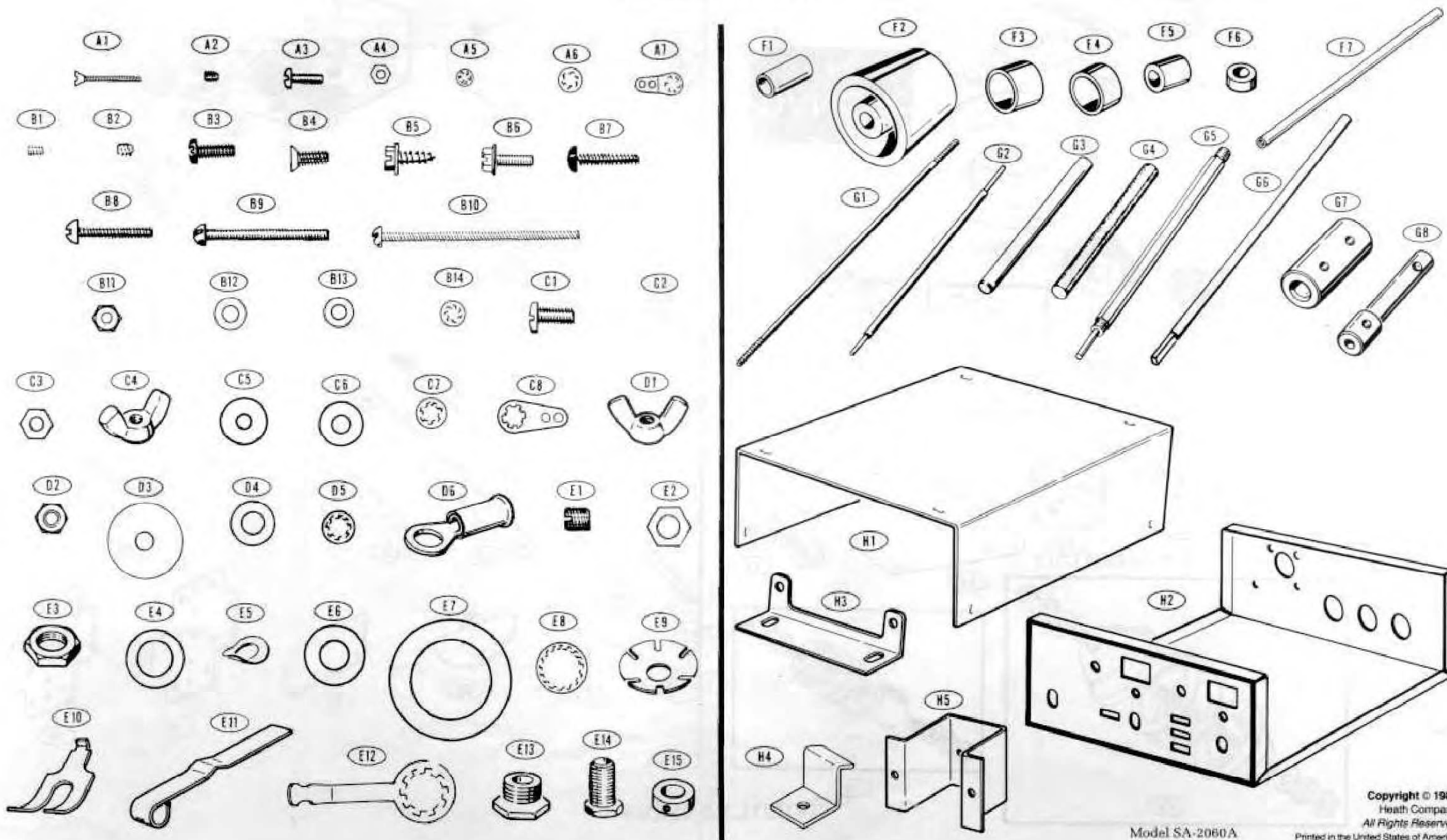


# ILLUSTRATION BOOKLET

Part of 595-2971-05

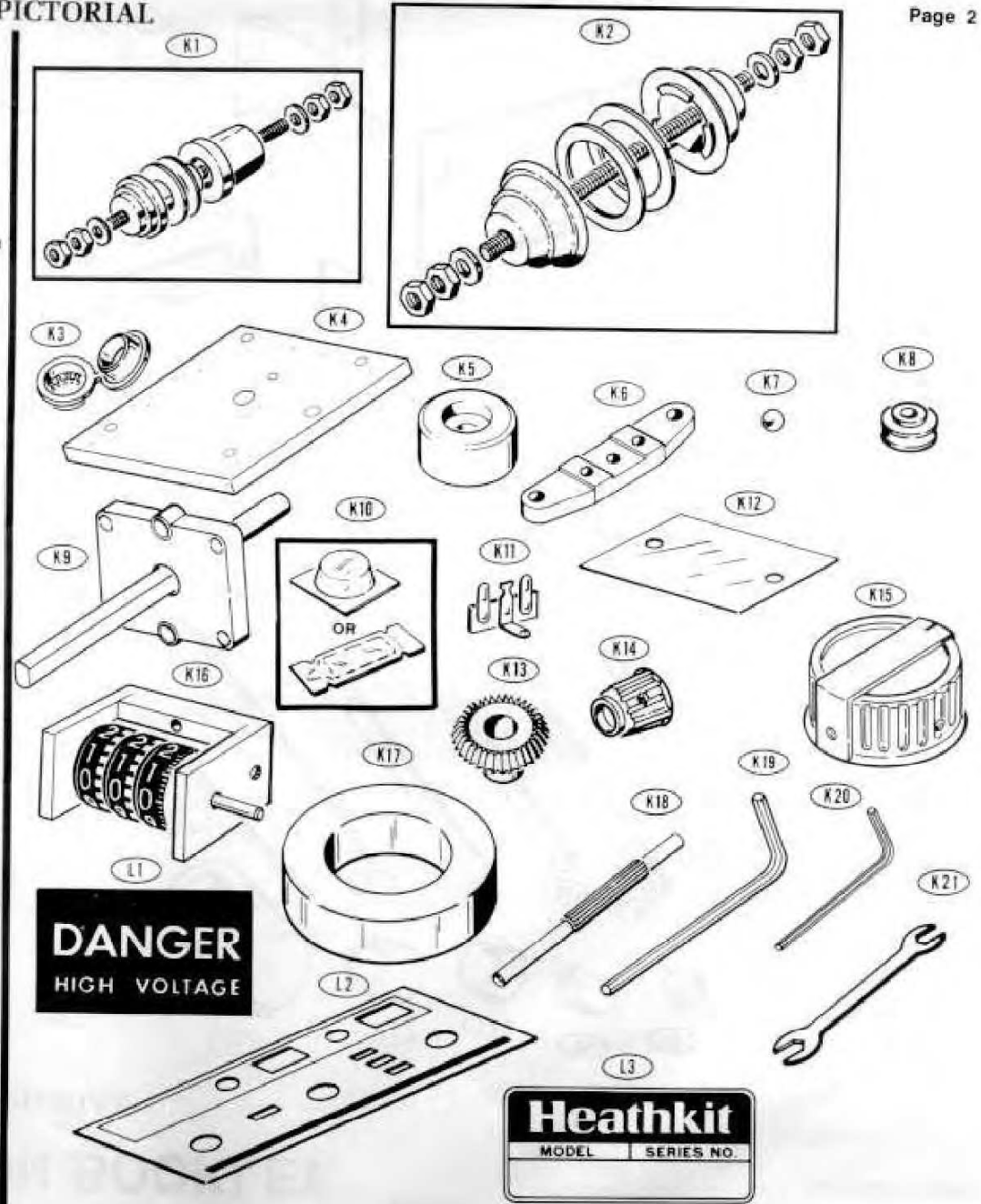
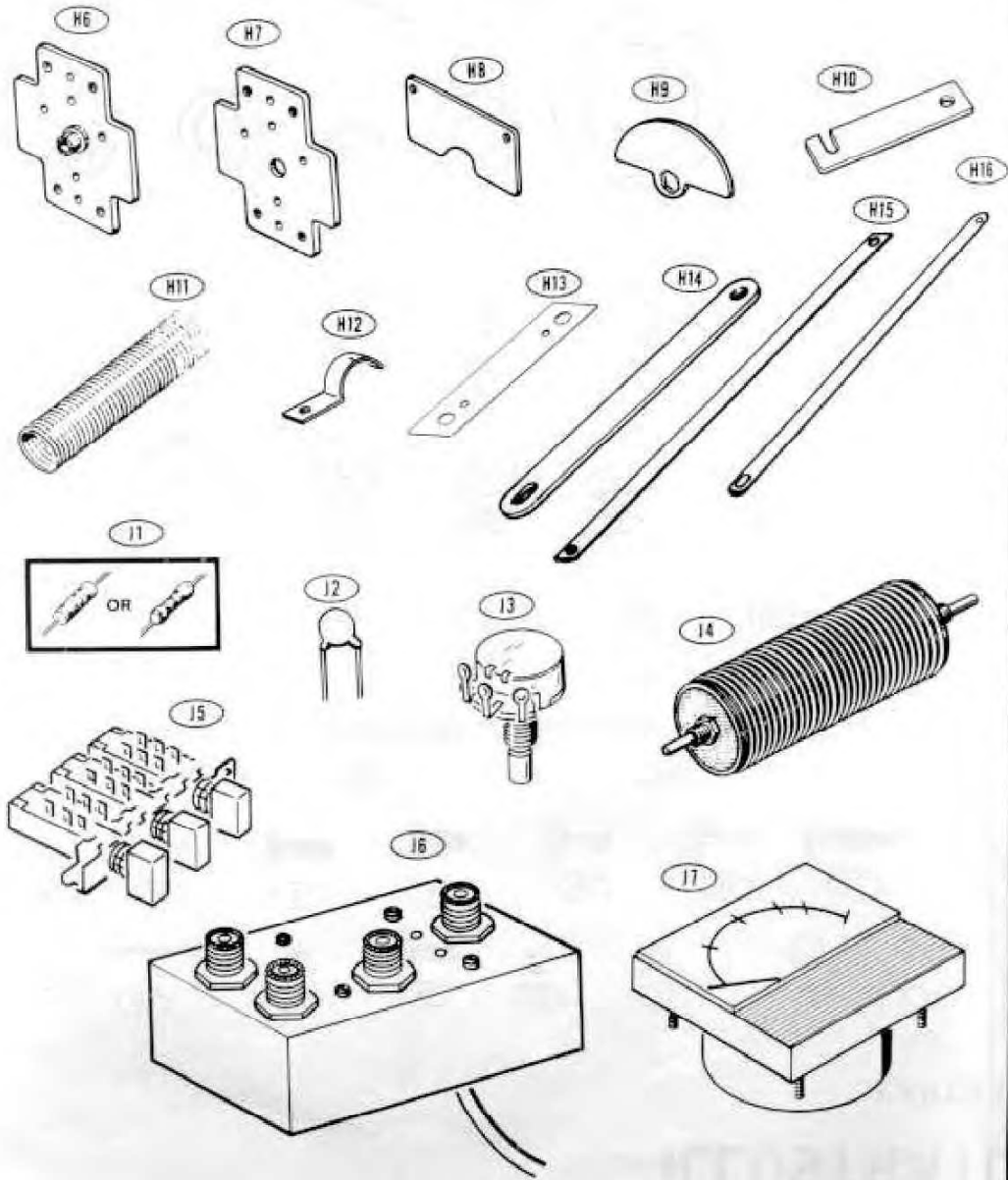
## PARTS PICTORIAL

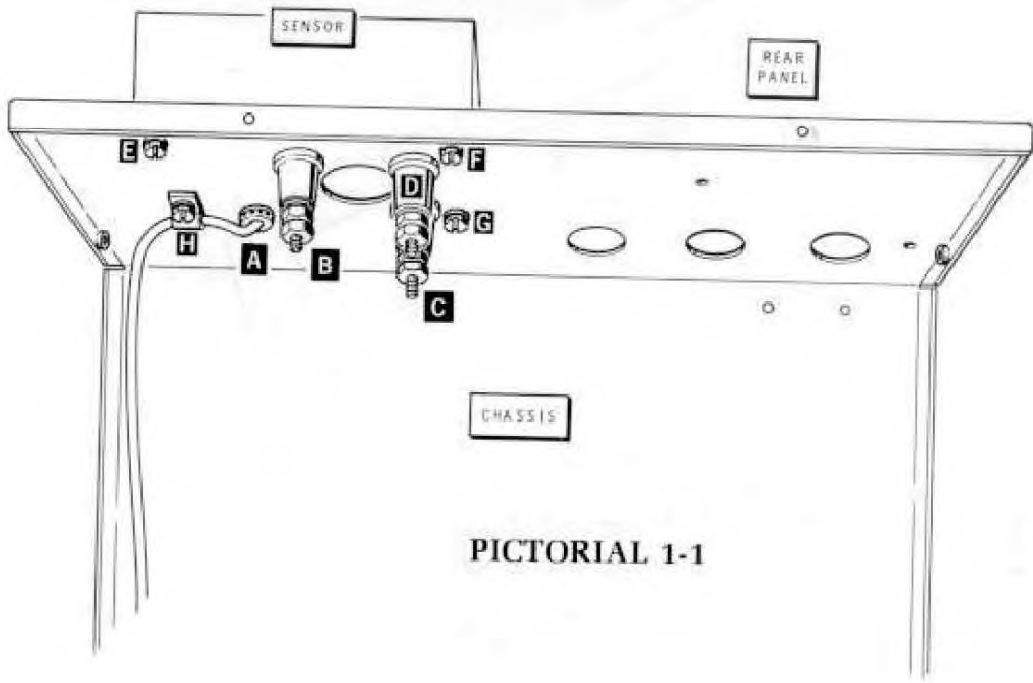


Model SA-2060A

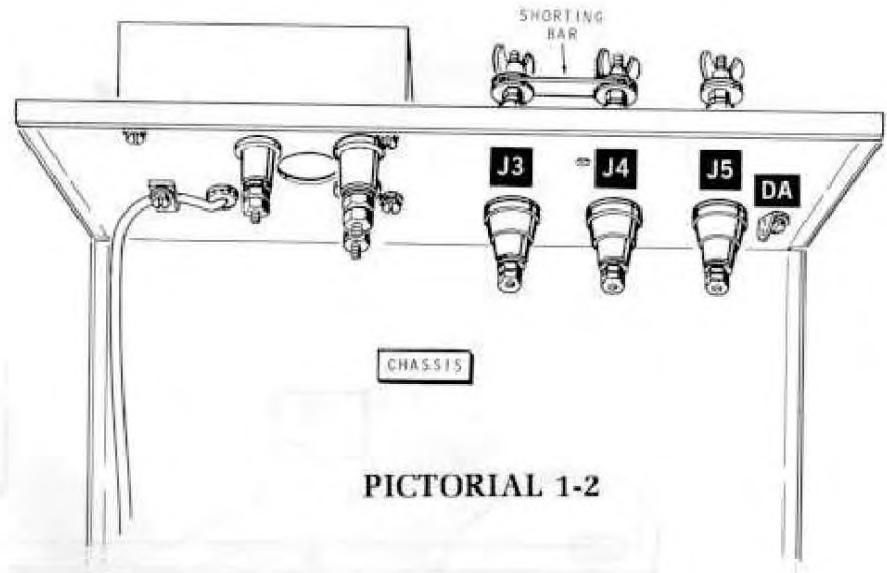
Copyright © 1983  
Health Company  
All Rights Reserved  
Printed in the United States of America

# PARTS PICTORIAL

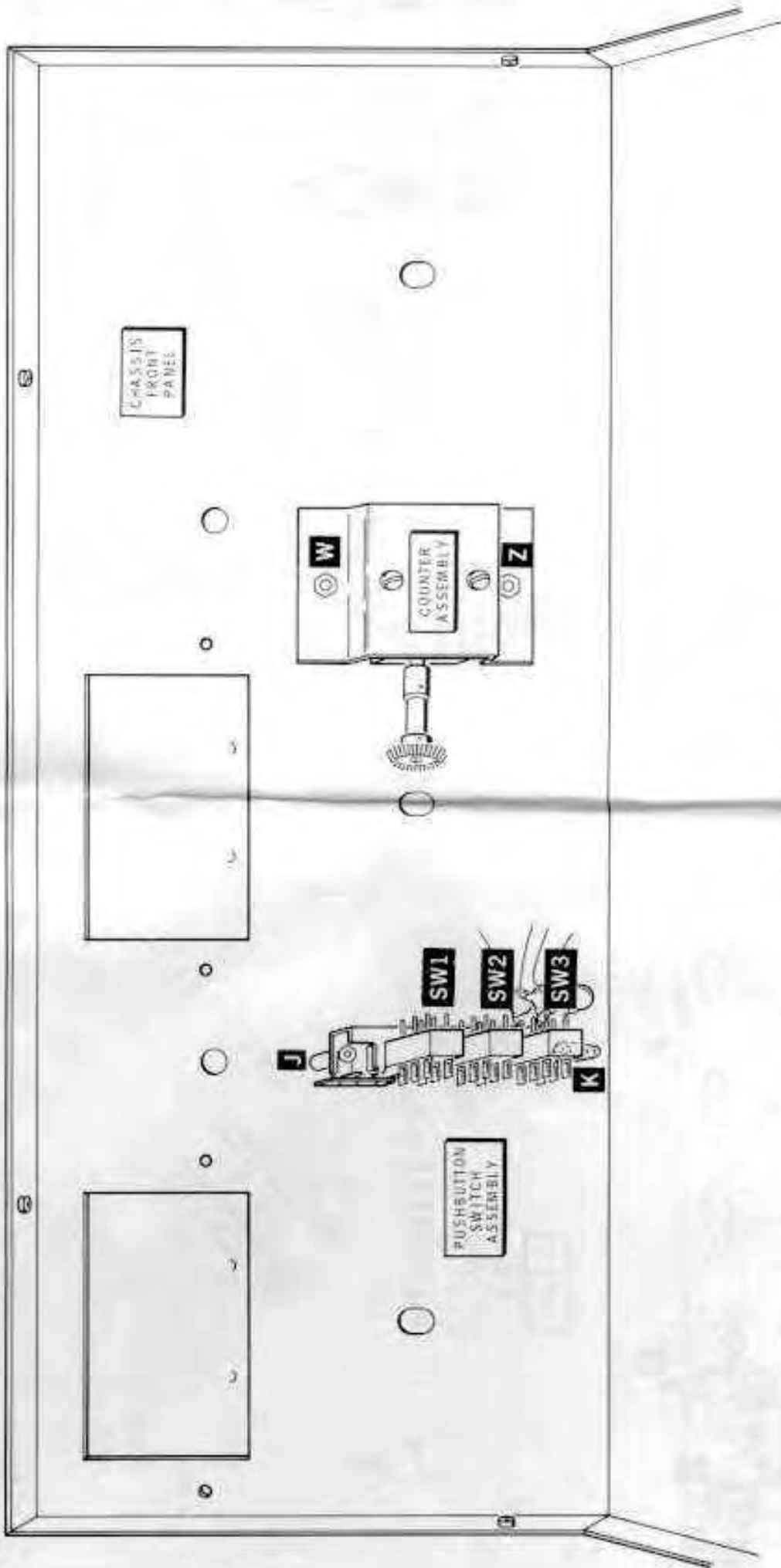




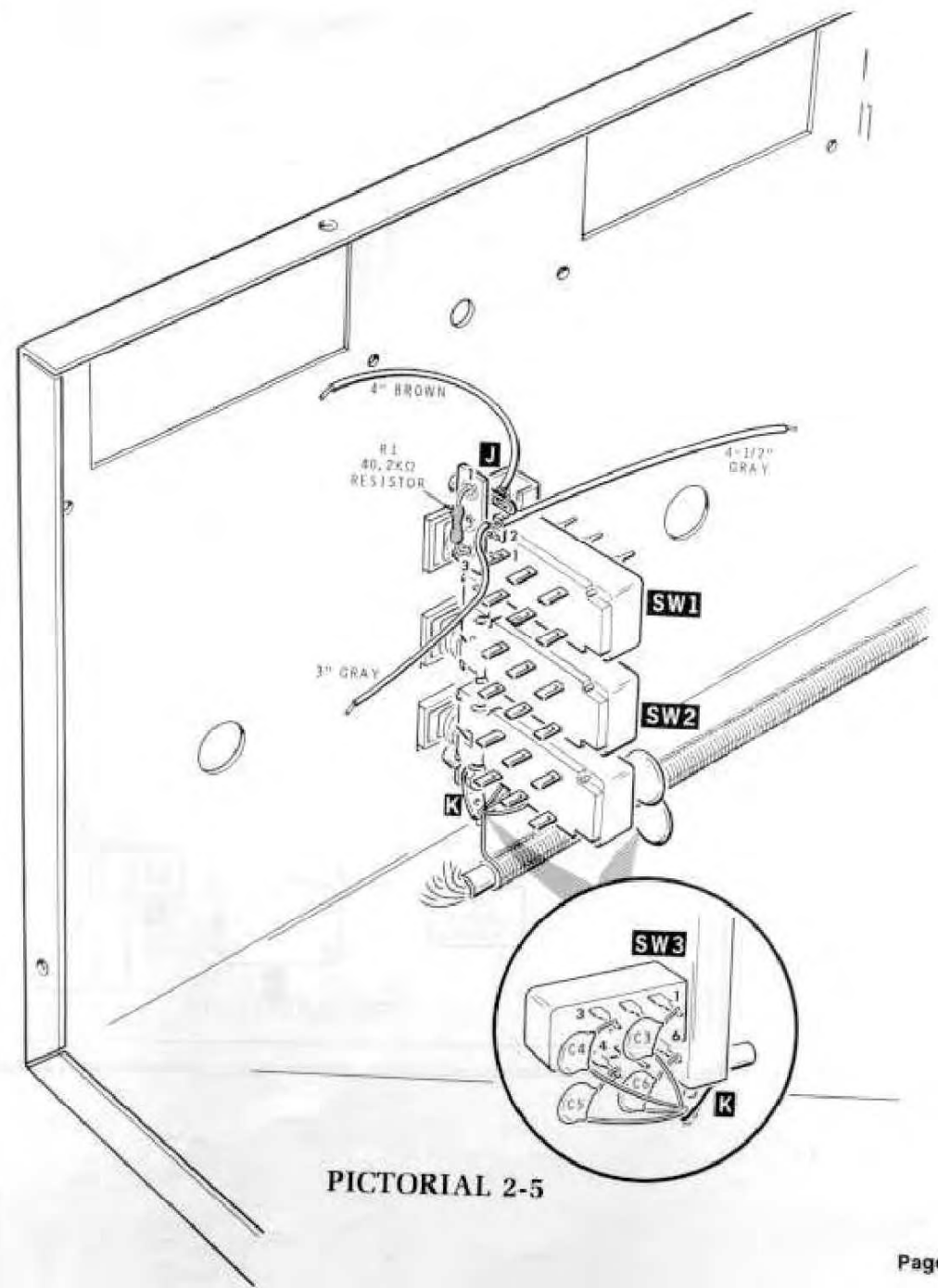
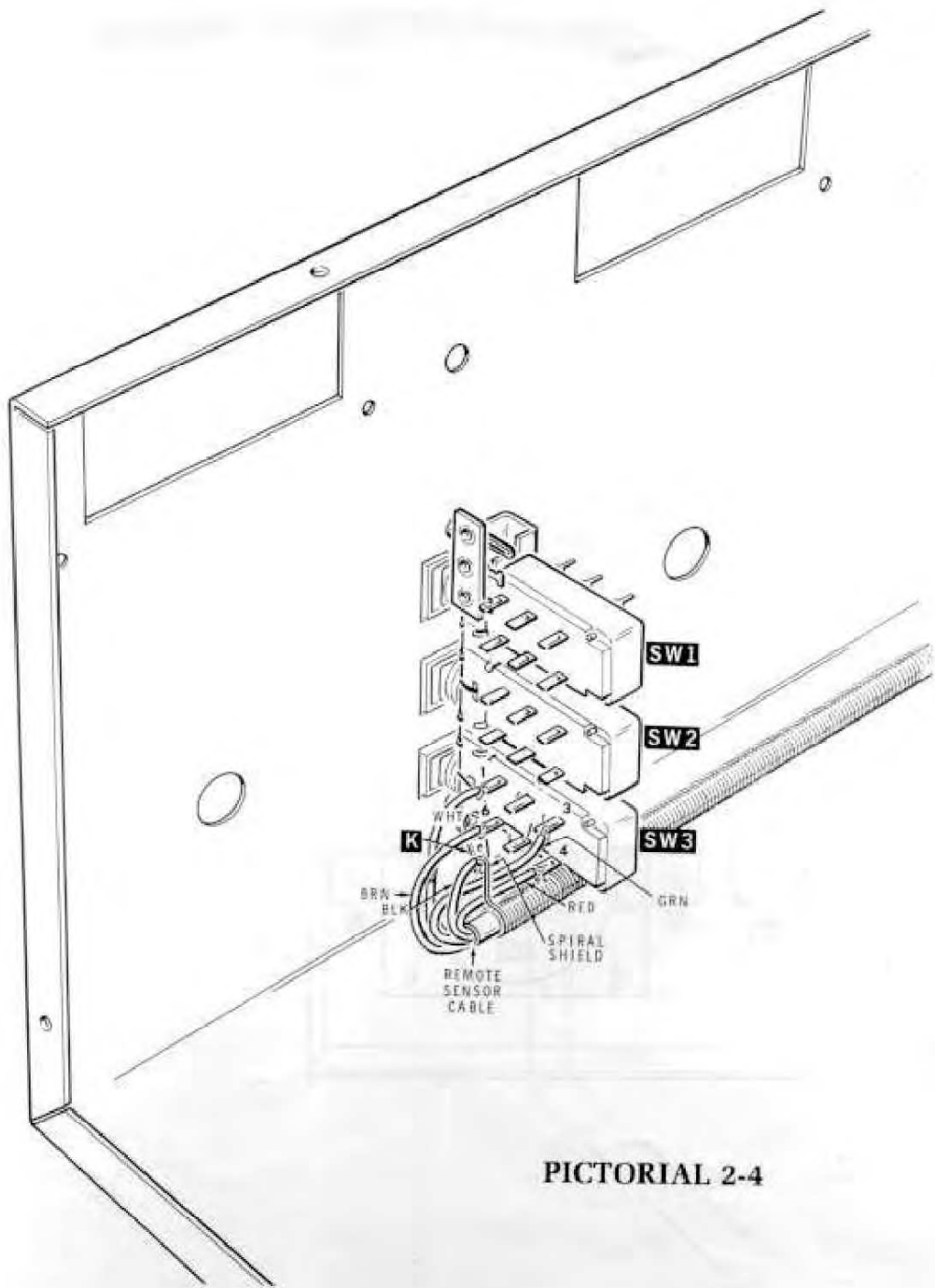
PICTORIAL 1-1

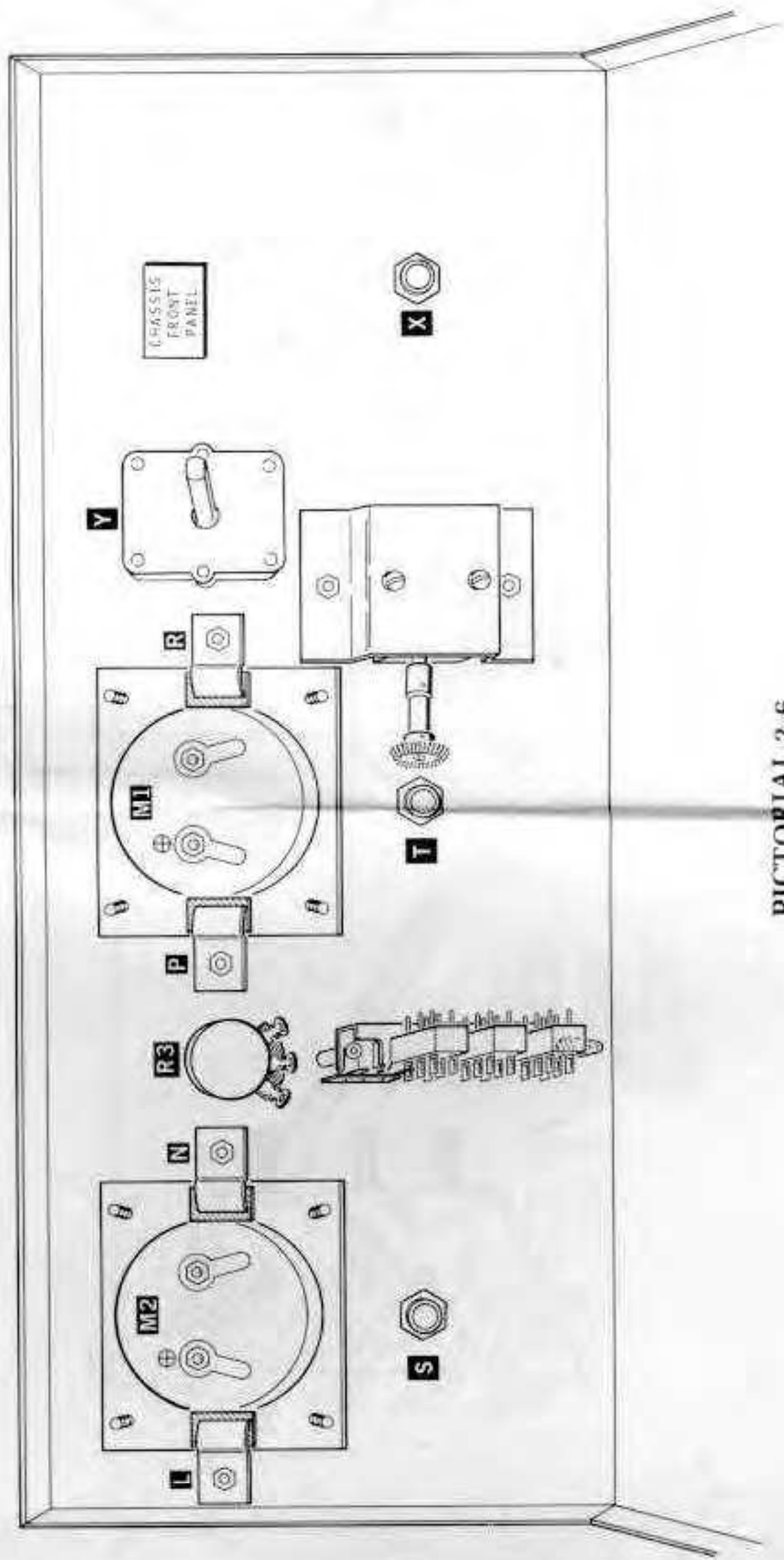


PICTORIAL 1-2

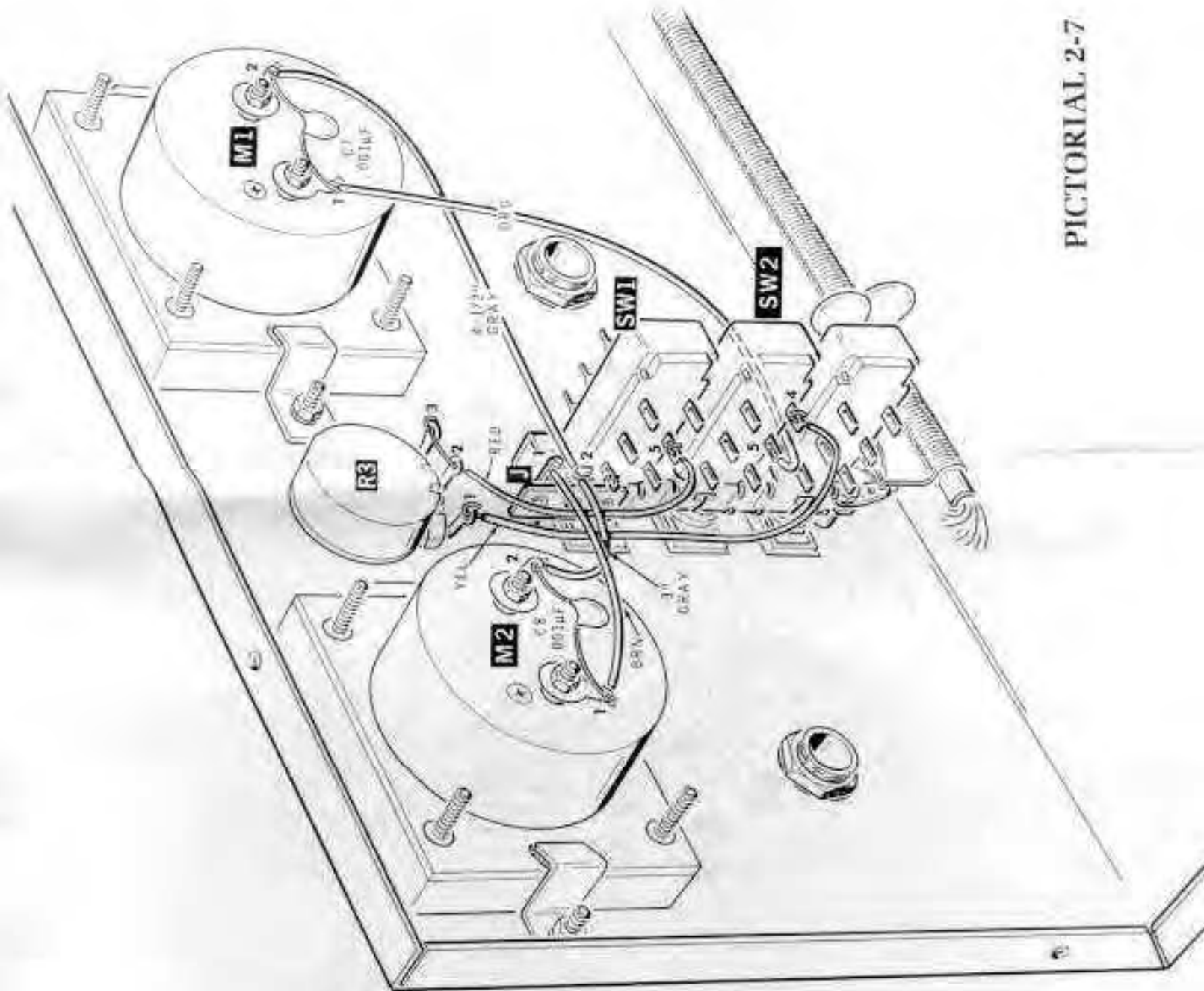


PICTORIAL 2-3

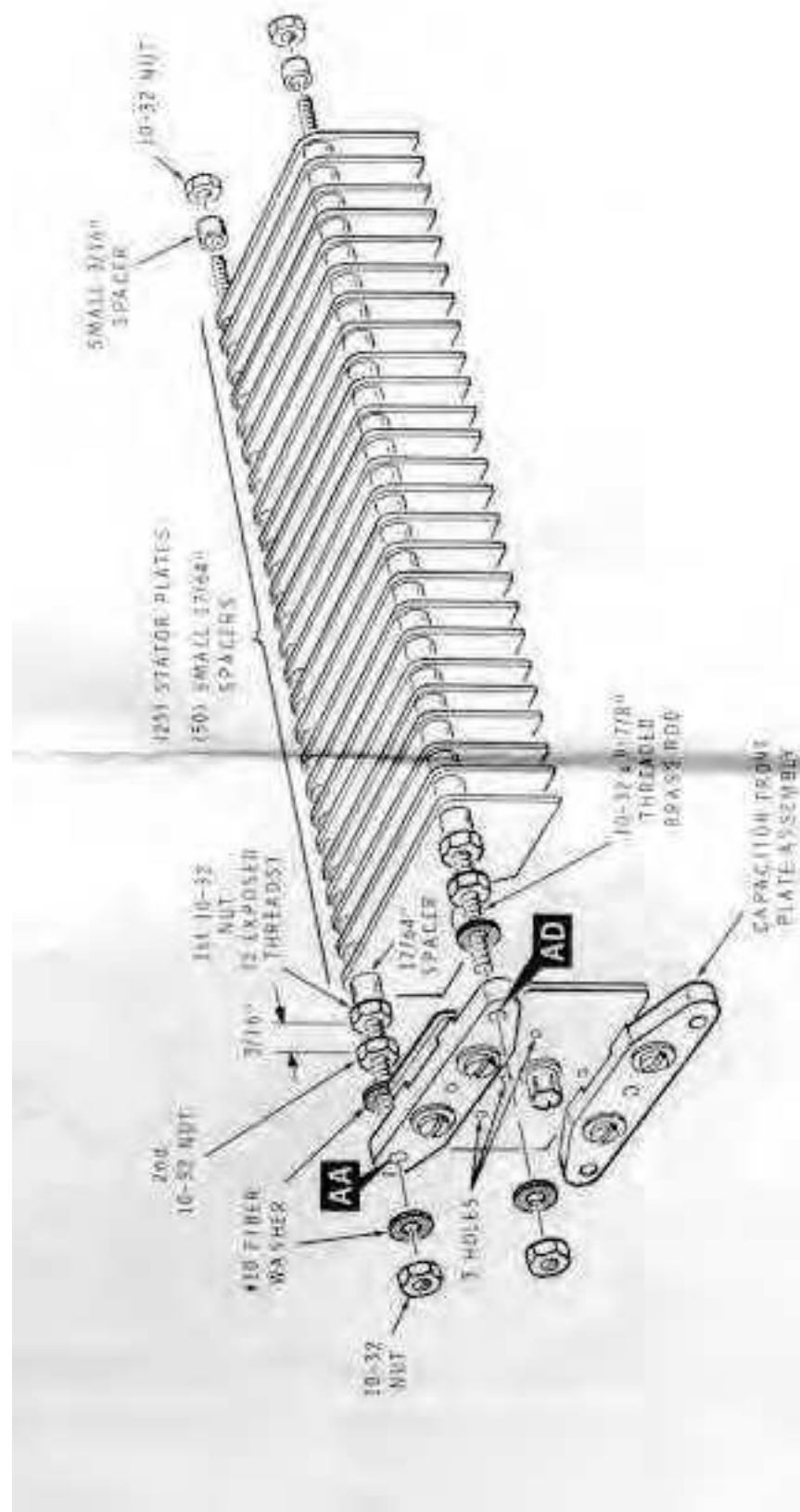




PICTORIAL 2-6

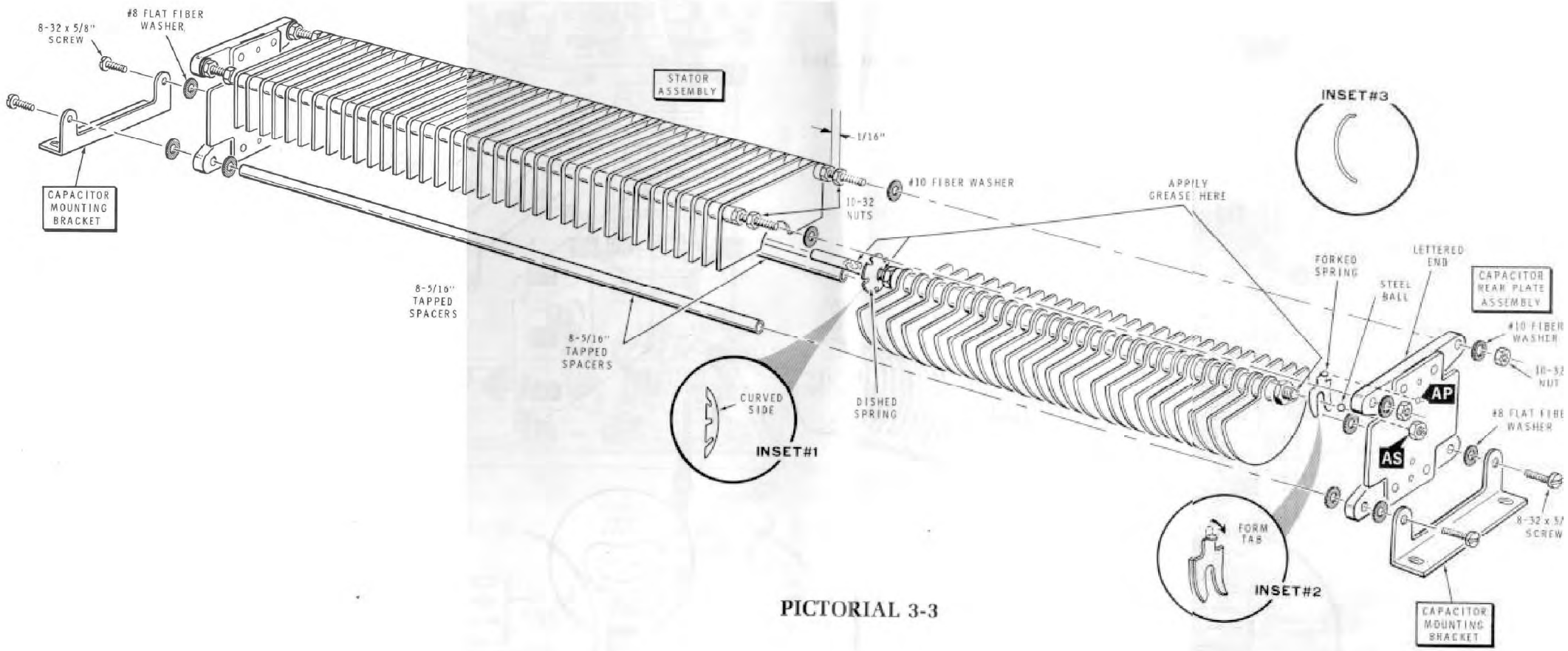


PICTORIAL 2-7

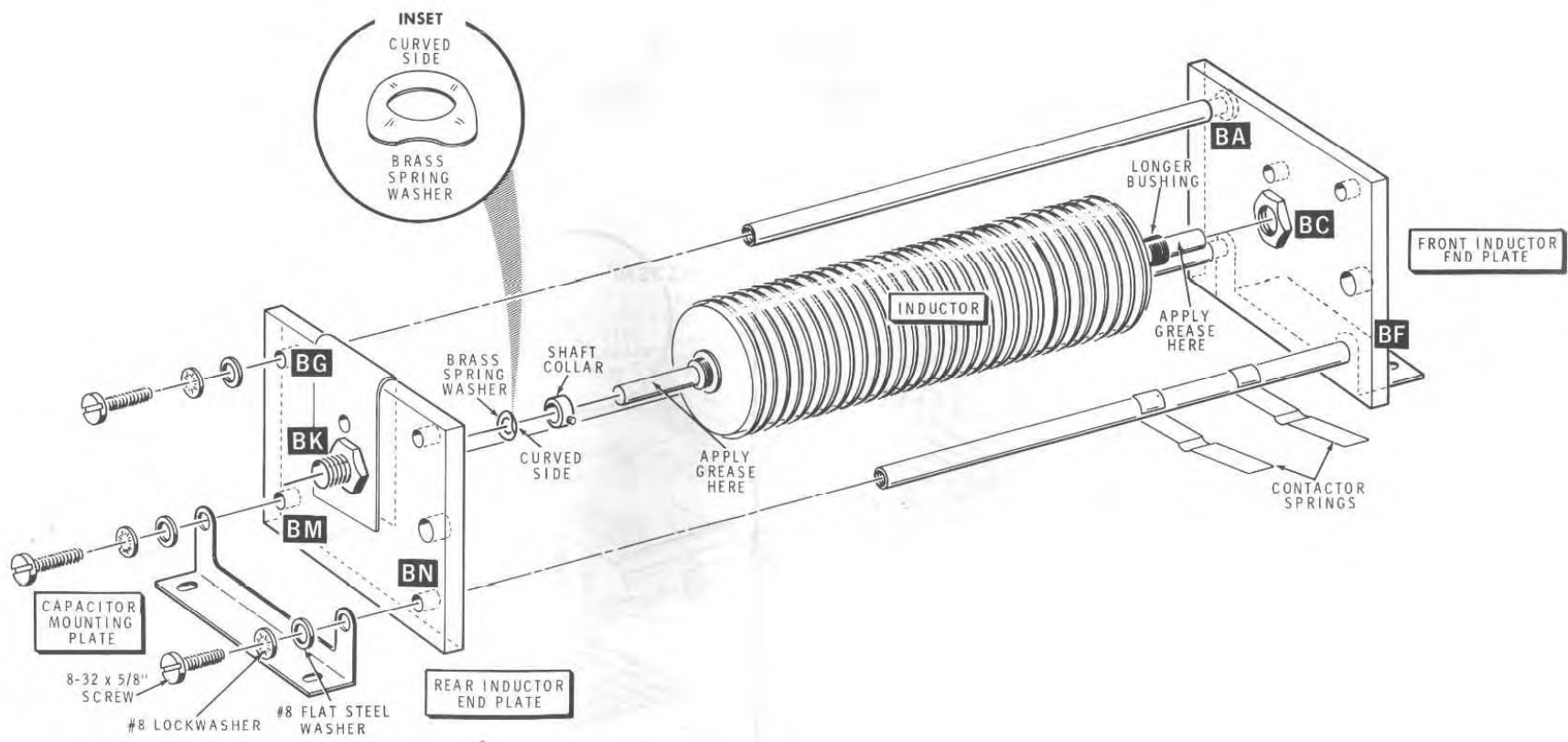


PICTORIAL 3-2

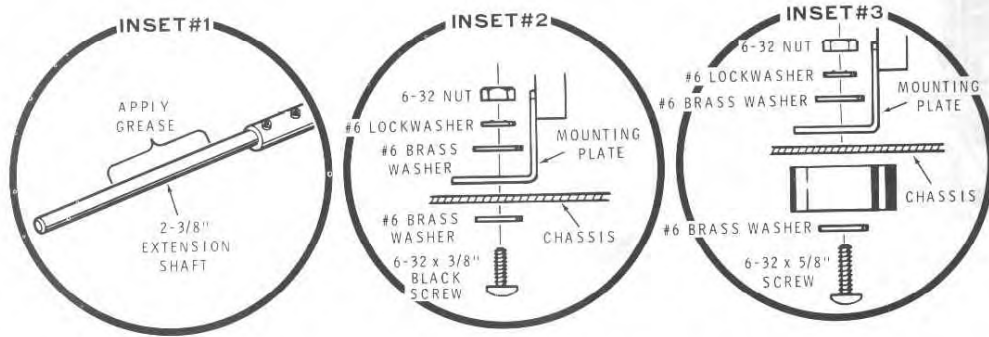
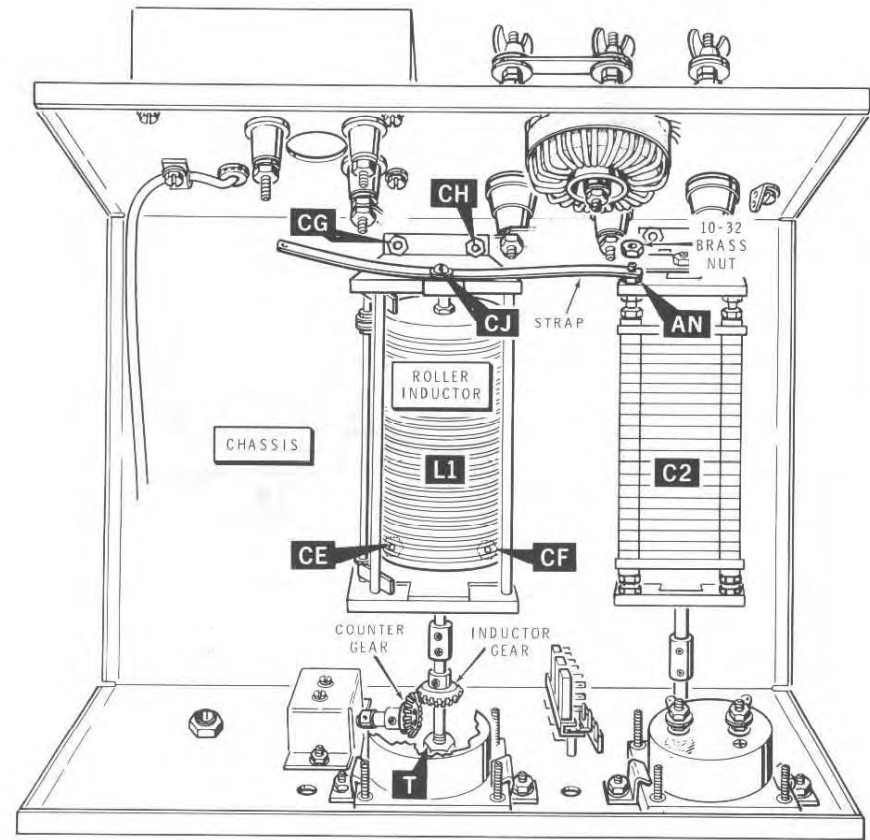
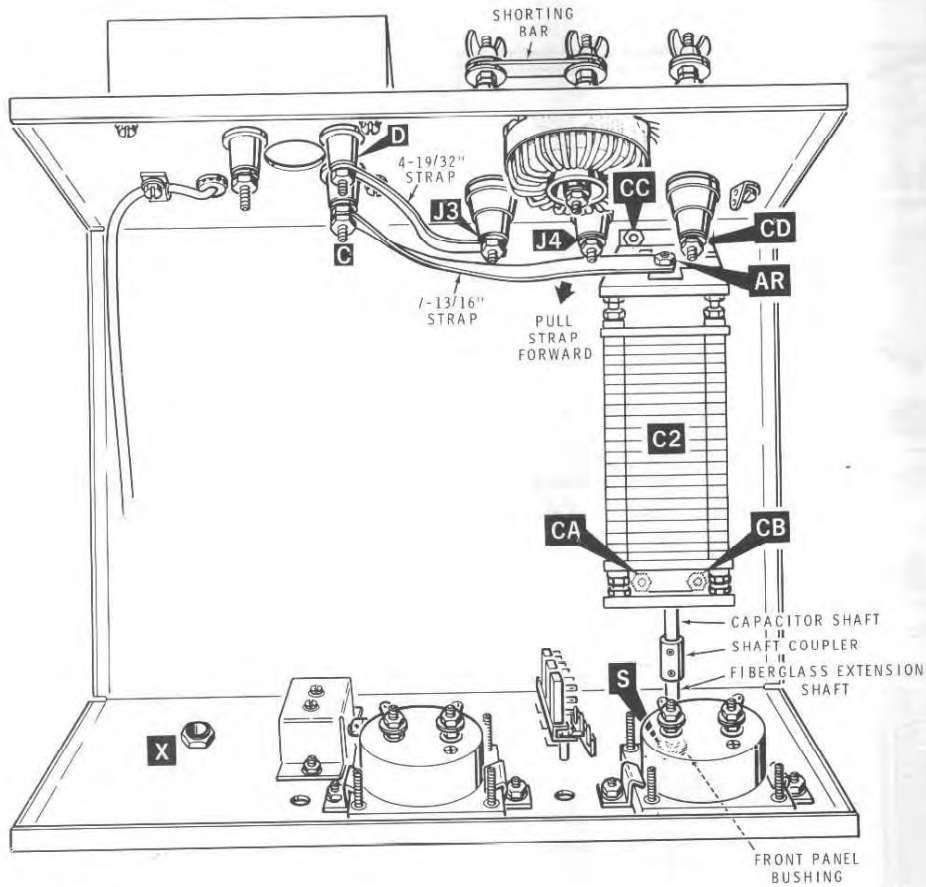




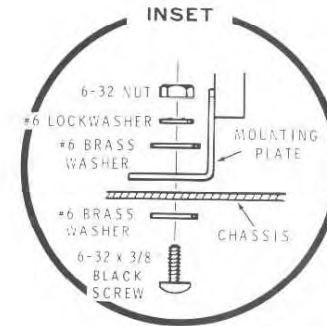
PICTORIAL 3-3



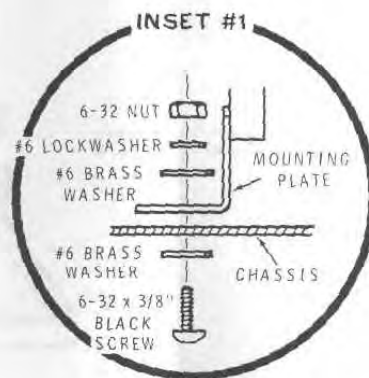
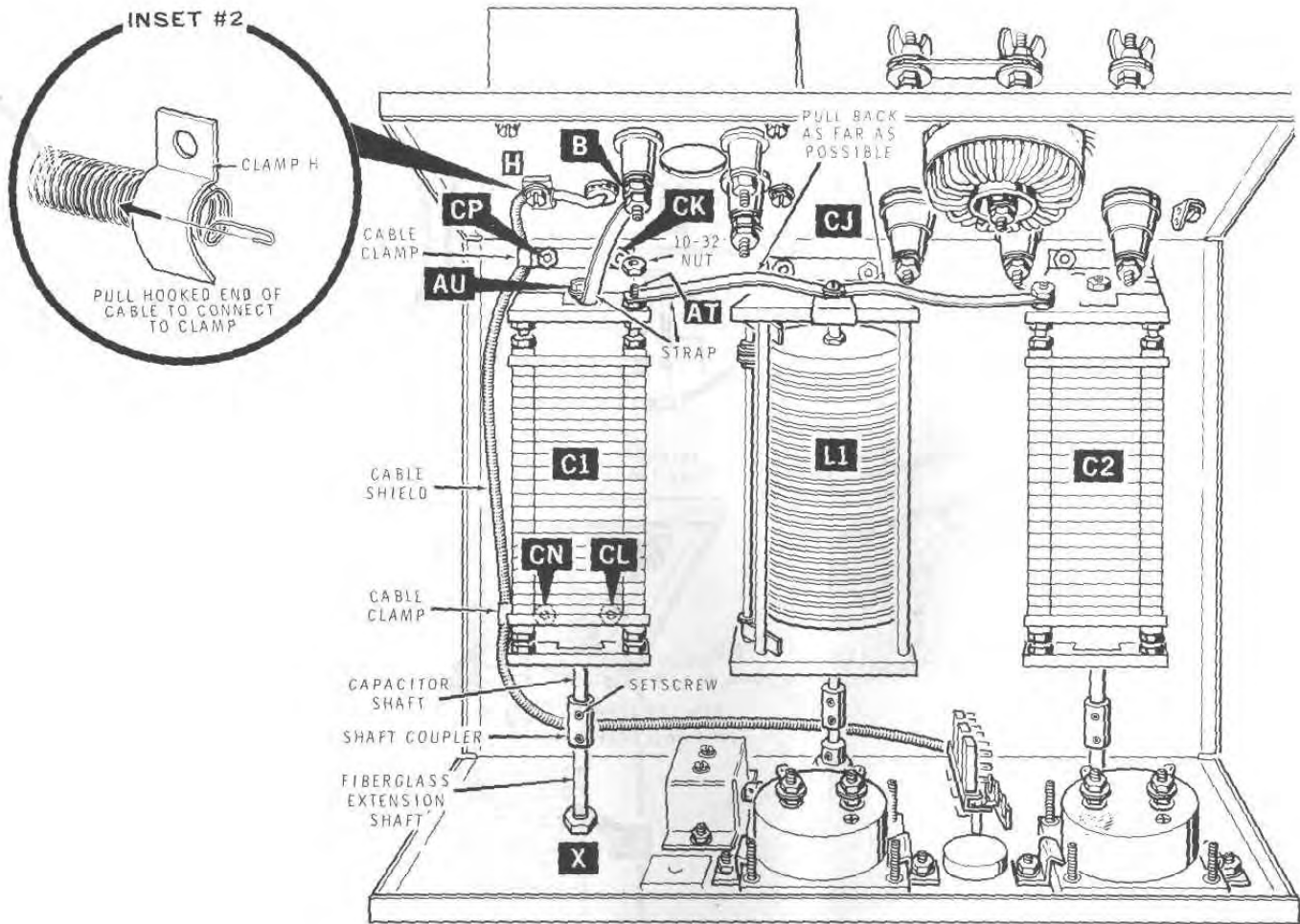
PICTORIAL 4-1



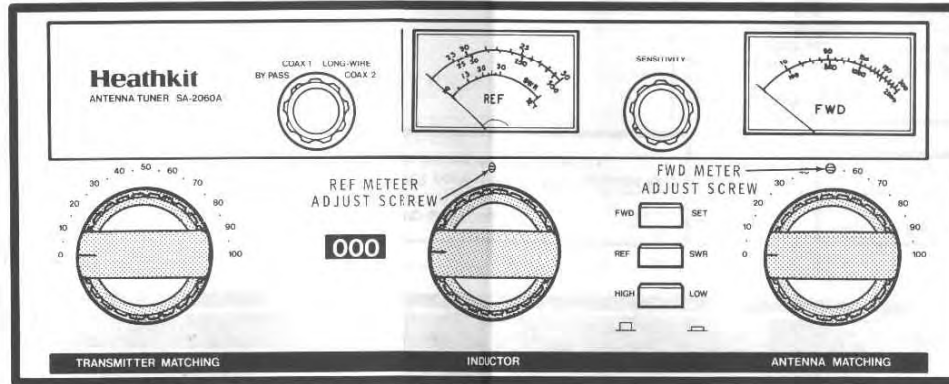
PICTORIAL 6-2



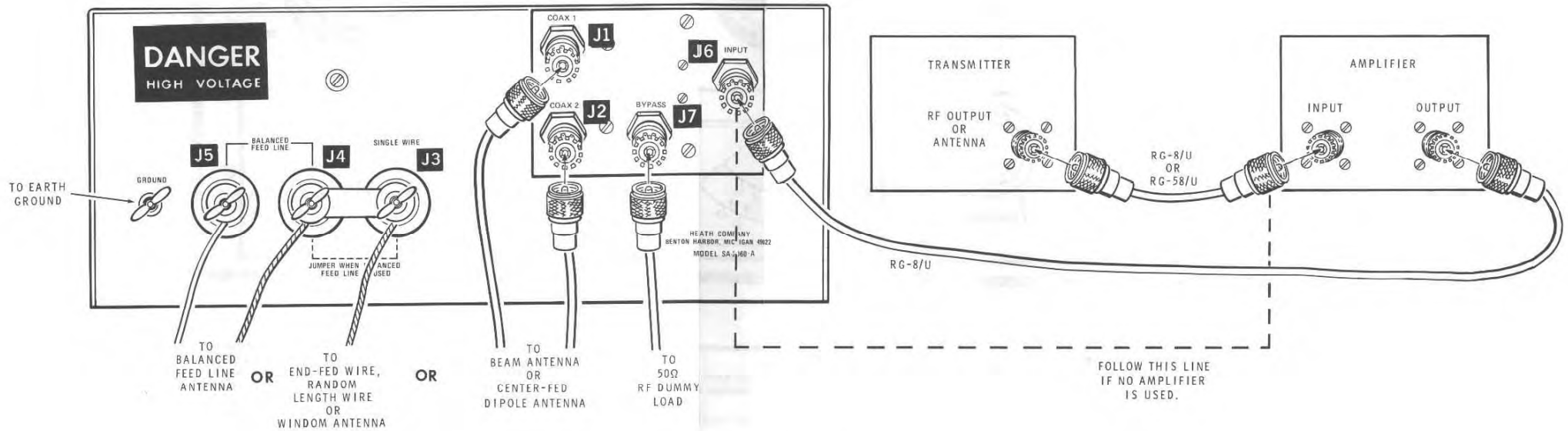
PICTORIAL 6-3



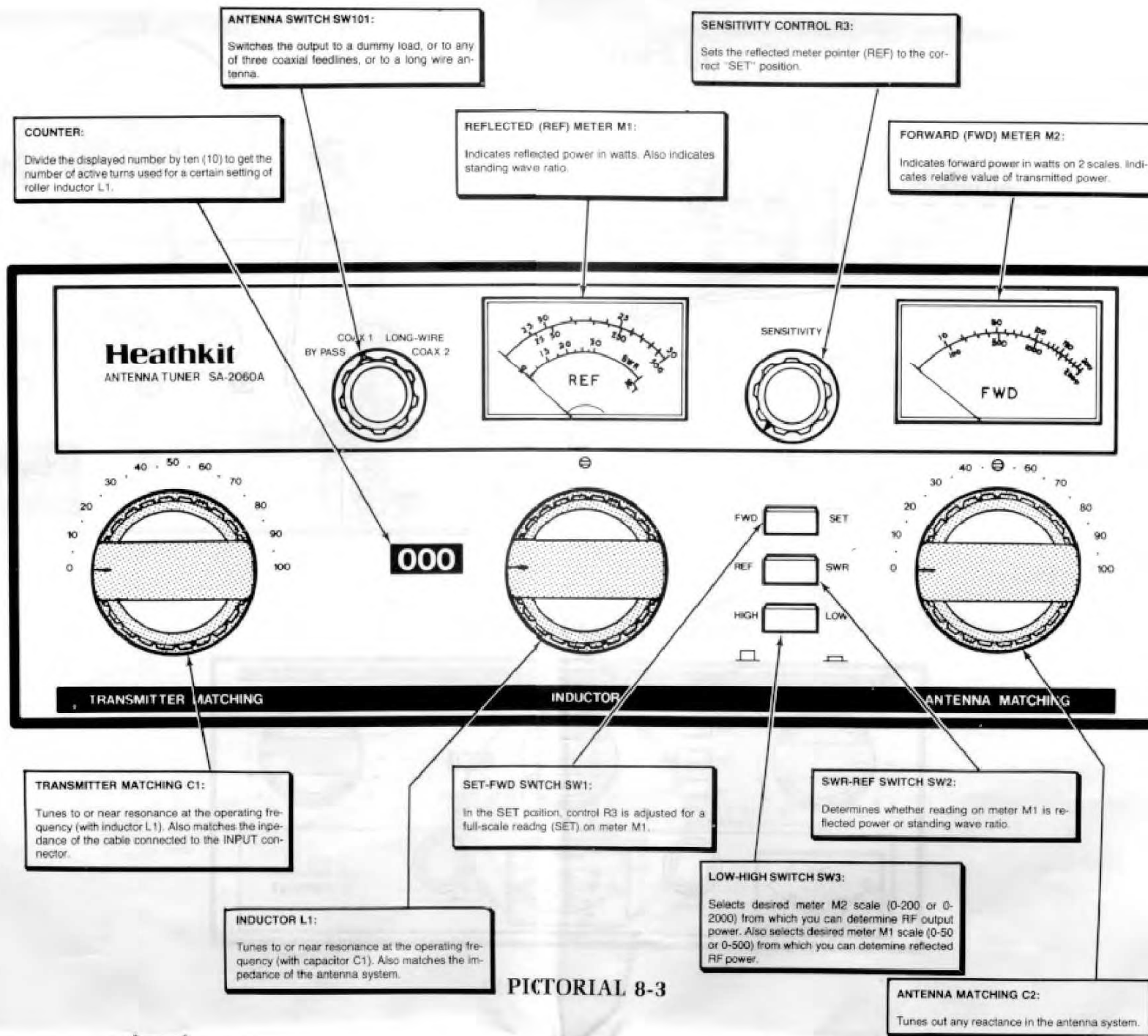
**PICTORIAL 6-4**

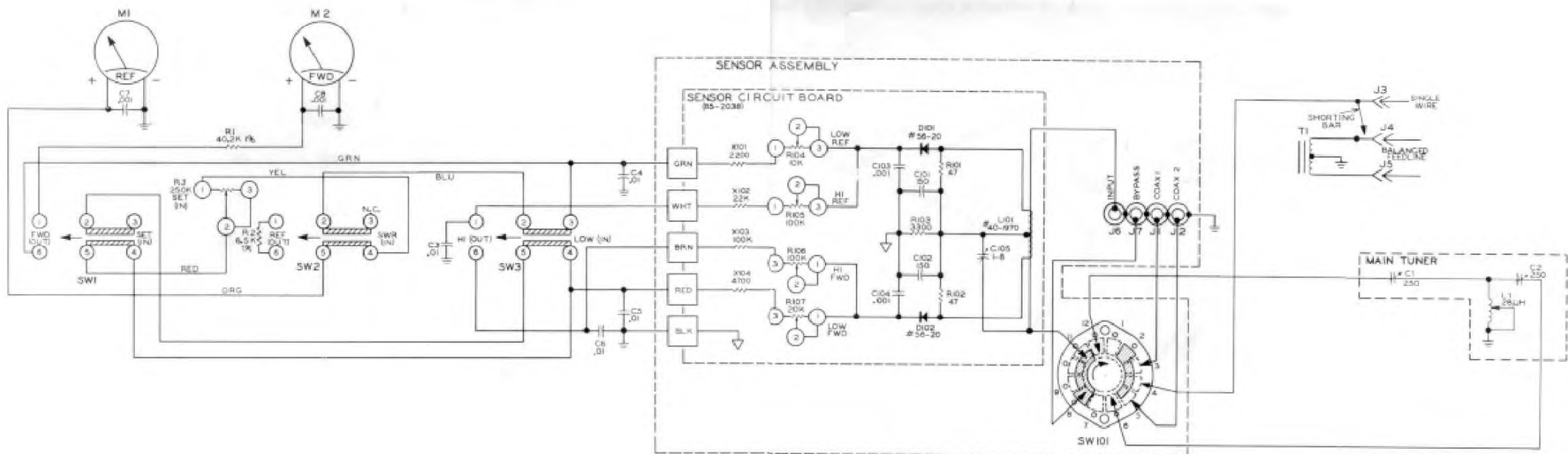


PICTORIAL 8-1



PICTORIAL 8-2





**SCHEMATIC OF THE  
HEATHKIT®  
DELUXE ANTENNA TUNER  
MODEL SA-2060A**

NOTES:

1. ALL RESISTOR VALUES ARE IN OHMS ( $\Omega$ );  
(K=1000).
2. ALL RESISTORS ARE 1/4-WATT, 5% TOLERANCE  
UNLESS OTHERWISE NOTED.
3. CAPACITOR VALUES LESS THAN 1 ARE IN  $\mu$ F (MICRO-  
FARADS), VALUES OF 1 OR GREATER ARE IN pF  
(PICOFARADS) UNLESS OTHERWISE MARKED.
4.  $\perp$  THIS SYMBOL INDICATES A CHASSIS GROUND.
5.  $\nabla$  THIS SYMBOL INDICATES A CIRCUIT BOARD  
GROUND.
6.  $\square$  THIS SYMBOL INDICATES A CIRCUIT BOARD  
WIRE CONNECTION.
7. SWITCH SW101 SHOWN IN BYPASS POSITION.