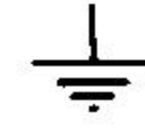
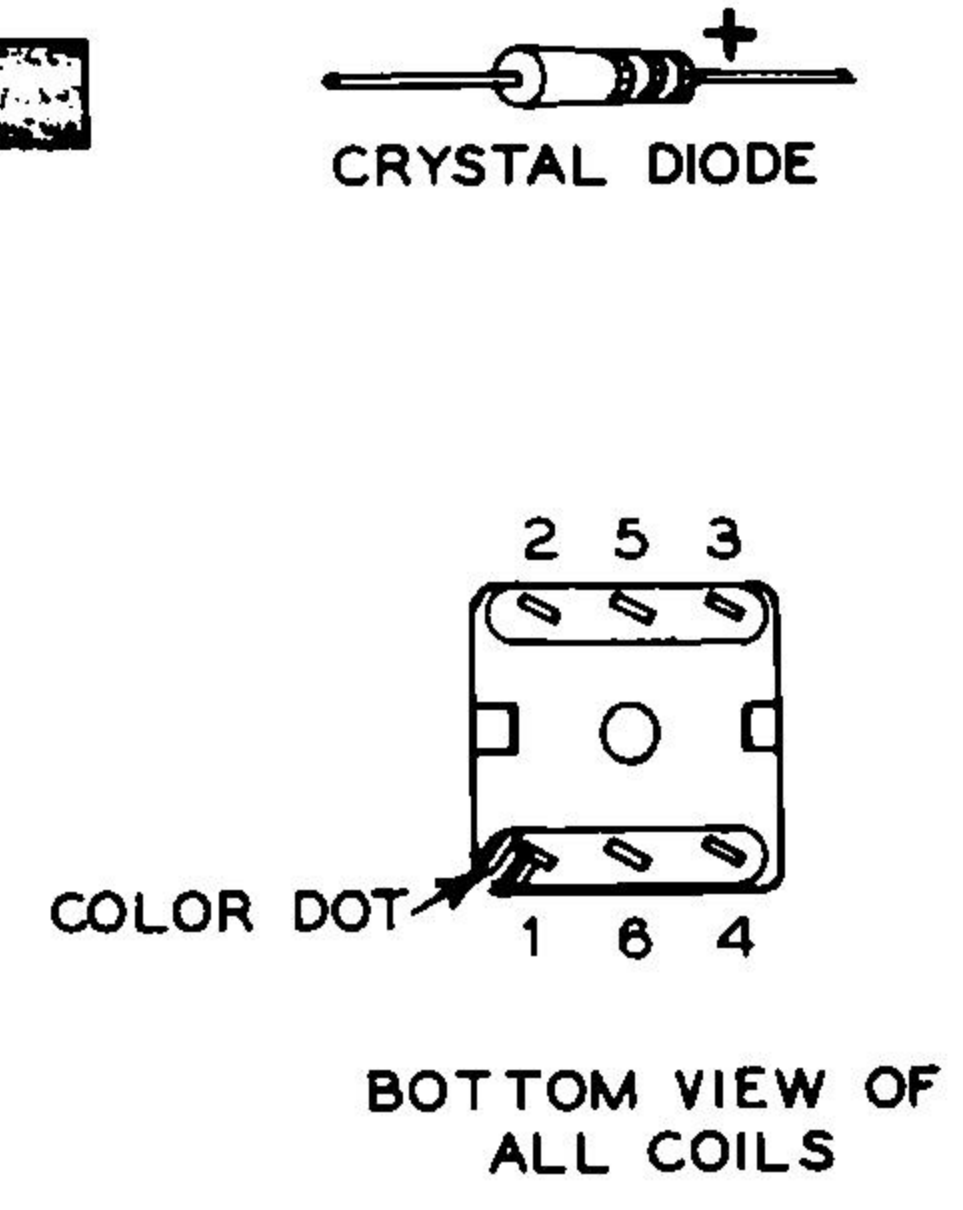
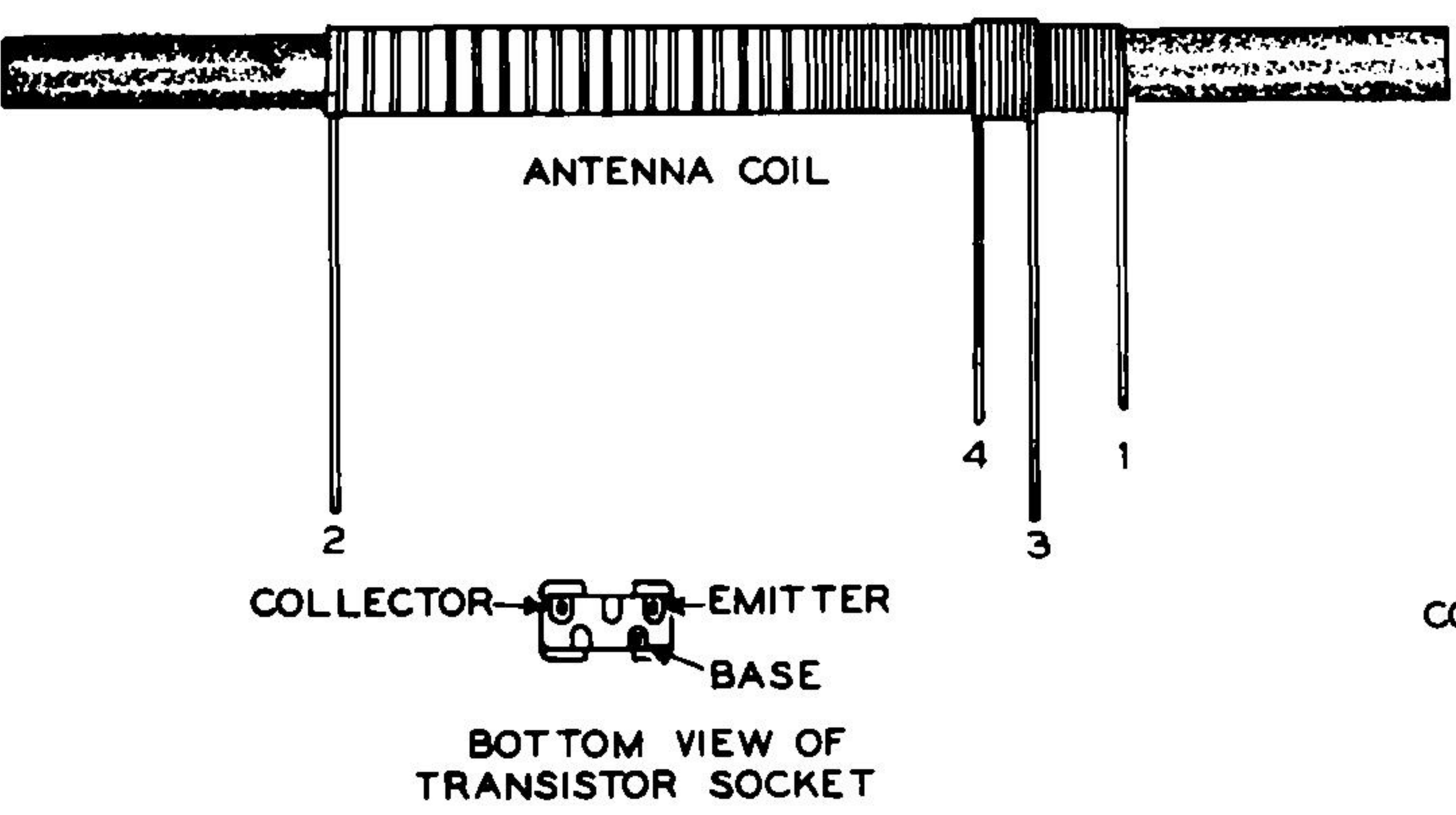
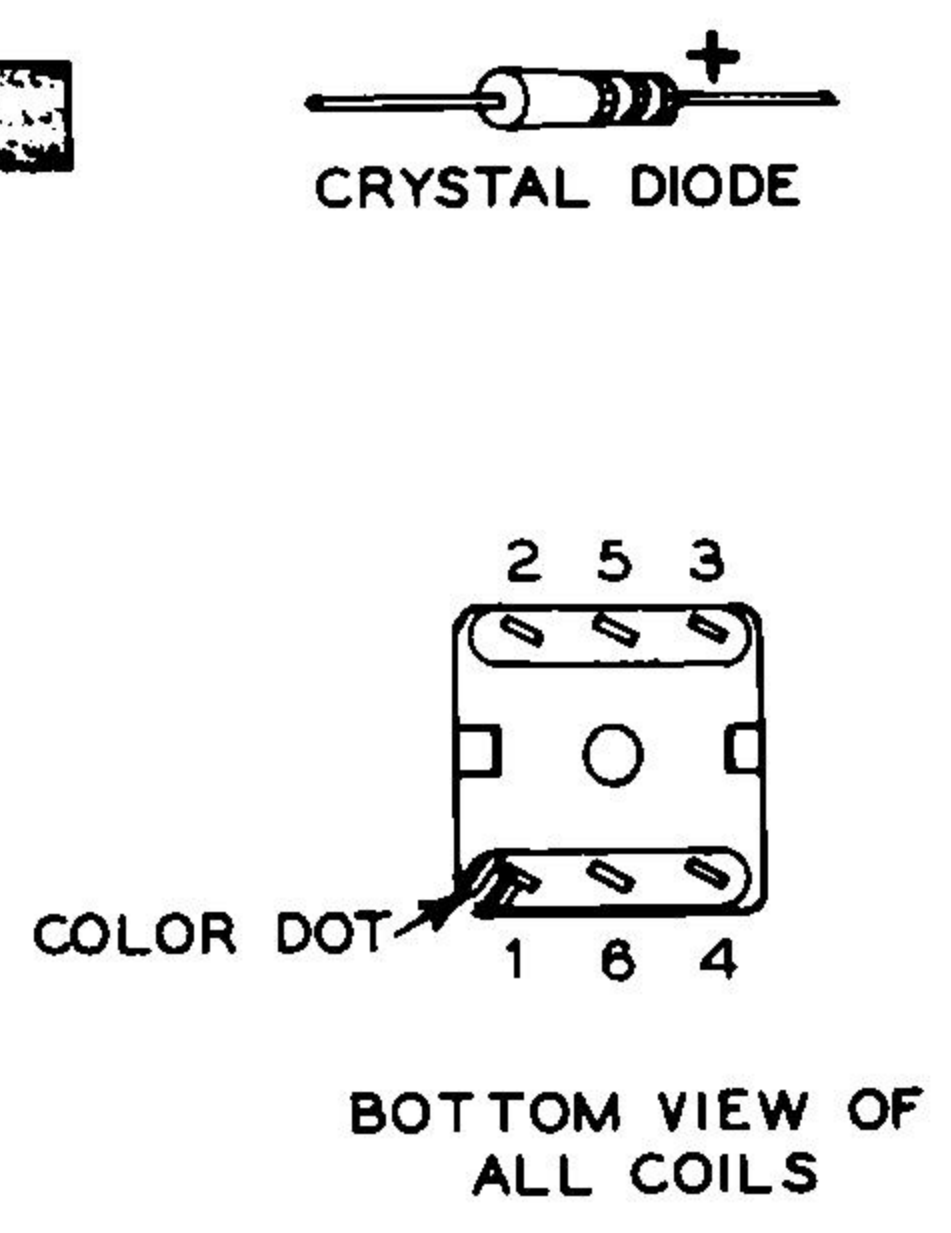
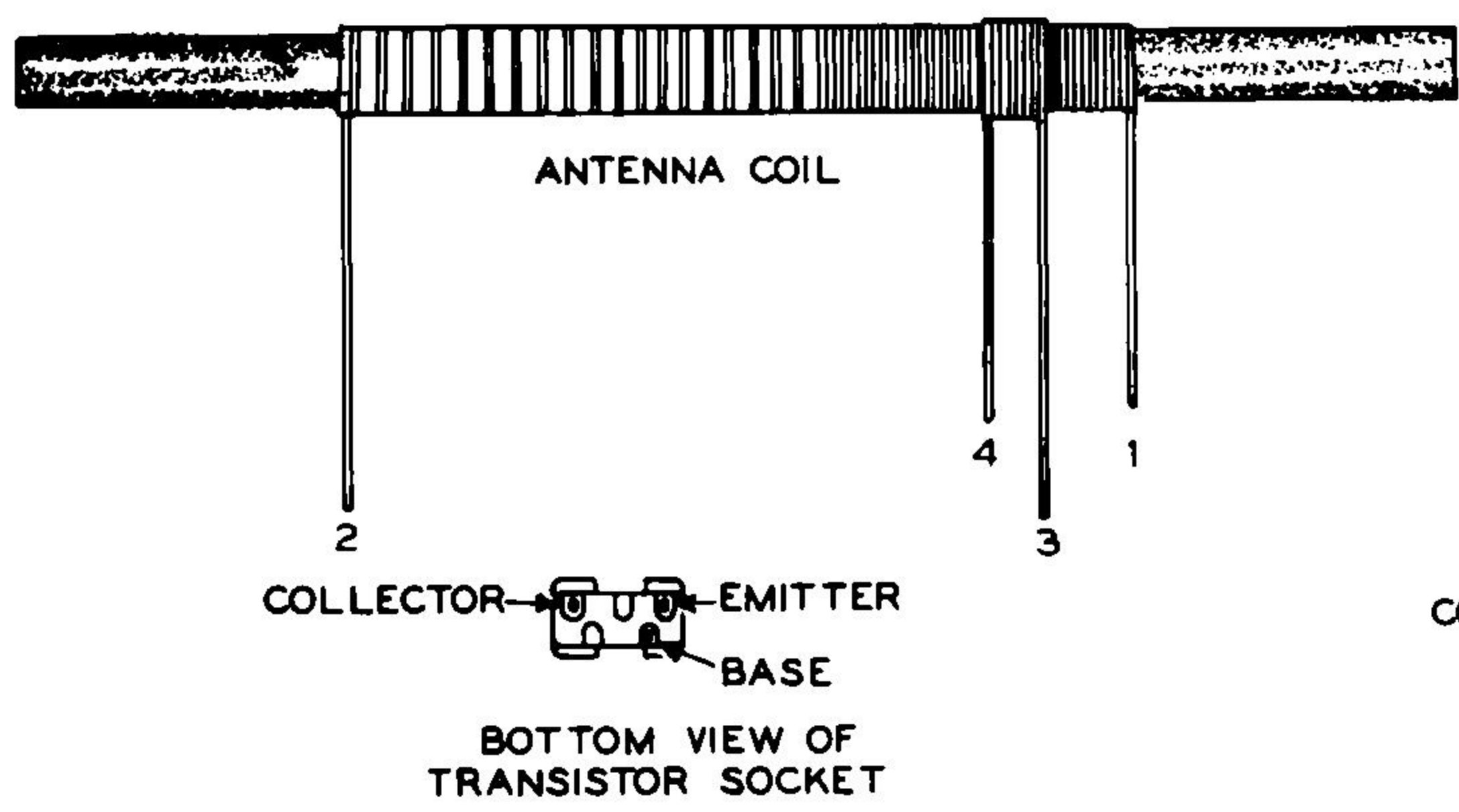
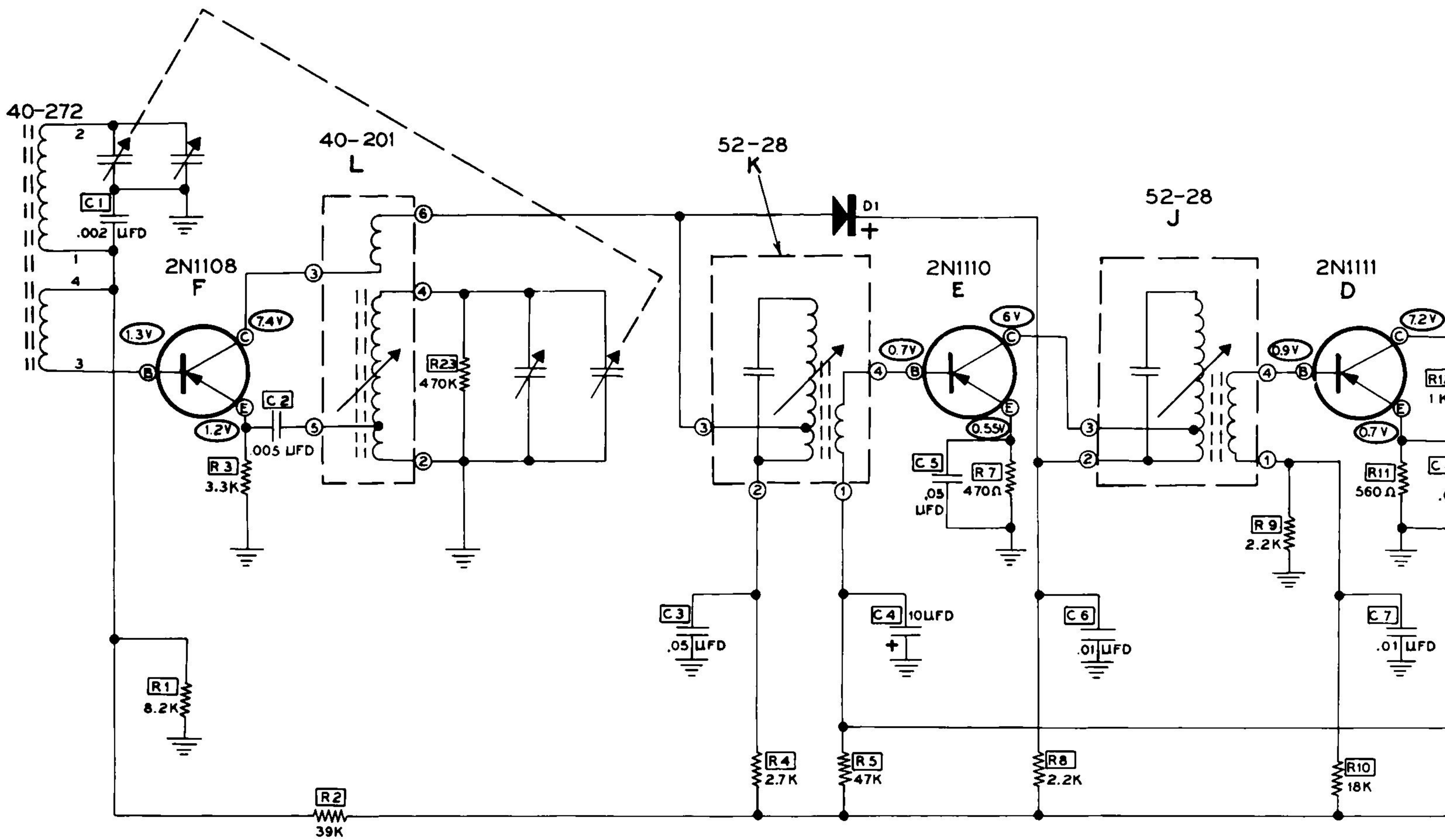


### HEATHKIT TRANSISTOR RADIO MODEL XR-2


NOTE:  
ALL RESISTORS 1/2 WATT.  
ALL CAPACITOR VALUES IN  $\mu$ fd.  
All voltages measured with 20,000  $\Omega$ /V or VTVM. Voltages shown are negative with respect to chassis. Fresh batteries installed. Volume maximum, no signal.  $\pm 20\%$  readings normal.  
IF = 455 KC.

 Indicates chassis connection.

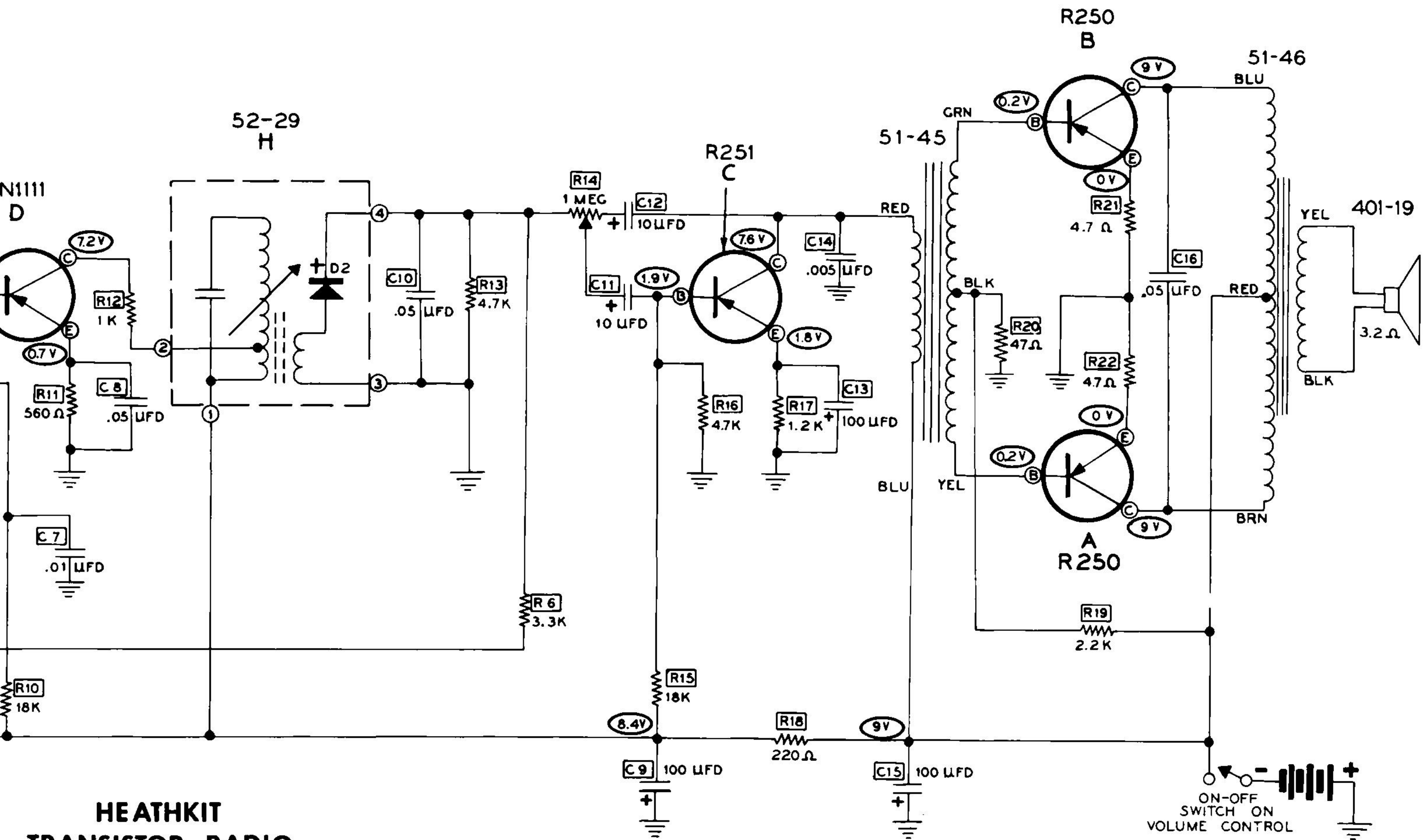




NOTE:  
 ALL RESISTORS 1/2 WATT.  
 ALL CAPACITOR VALUES IN  $\mu$ d.  
 All voltages measured with 20,000  $\Omega/V$  or VTVM. Voltages shown are negative with respect to chassis. Fresh batteries installed. Volume maximum, no signal.  $\pm 20\%$  readings normal.  
 IF = 455 KC.

 Indicates chassis connection.

H  
 TRANS  
 MO



**HEATHKIT  
TRANSISTOR RADIO  
MODEL XR-2**