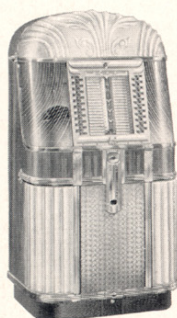




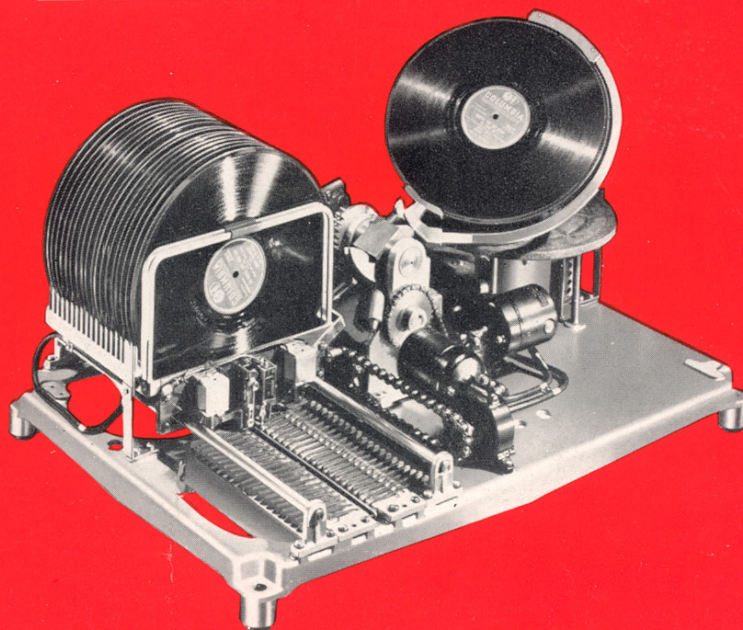
FAMED **AMi** QUALITY



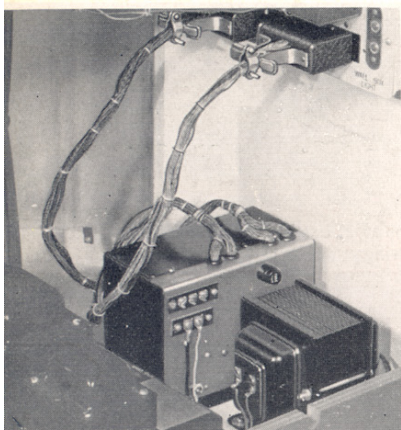
MODEL "A"



MODEL "B"



Stepper for wall box hook-ups easily placed on bottom shelf and plugged in.



Replaceable grille louvers can be moved and inserted without dismantling grille.



The dependability of the AMI record changing mechanism is basic—universally acclaimed! Its performance over the years proves to all music operators there is more profit, more financial security in running AMI's than any other make. Those sterling performers, Model "A" and Model "B" are today delivering the goods in tens of thousands of locations. Regardless of age, they play and work as if they had just been shipped from the factory this week. And should anyone want to sell them, they command a premium! AMI music is the foundation of operating success; you not only bank big operating profits, you save the greatest part of your first investment. 40 years of music know-how are behind the "C". Size:  $66\frac{1}{2}$  high x  $33\frac{3}{16}$  wide x  $24\frac{5}{8}$  deep. Shipping weight: 328 lbs. net 253 lbs.

**AMi** *Incorporated*

General Offices and Factory: 1500 Union Ave. S. E., Grand Rapids 2, Michigan  
Sales Office: 127 N. Dearborn St., Chicago 2, Illinois