

Parts Catalog



# Model R-74



**Rowe international, inc.**

A SUBSIDIARY OF TRIANGLE INDUSTRIES, INC

75 TROY HILLS RD., WHIPPANY, N. J. 07981, TEL. (201) 887-0400, CABLE: ROVENO

# TABLE OF CONTENTS

INTRODUCTION	7-1
DESCRIPTION	7-1
ORDERING REPLACEMENT PARTS	7-1
PARTS BREAKDOWN	7-2

Figure	Title	Page
1	Phonograph Final Assembly	7-2
2	Selector and Speaker Panel Assembly	7-10
3	Selector Assembly	7-12
4	Top Door Assembly	7-14
5	Front Door Assembly	7-16
6	Side Panel Assembly	7-18
7	Top Access Door Assembly	7-19
8	Mechanism Assembly	7-20
9	Playmeter Wheel Assembly	7-29
10	Tone Arm Assembly	7-30
11	Turntable Motor and Plate Assembly	7-31
12	Cam Switch and Motor Assembly	7-32
13	Search Unit and Pinwheel Assembly	7-34
14	Search Unit Assembly	7-36
15	Stop Switch Assembly	7-40
16	Sprag Assembly (Magazine Motor)	7-42
17	Cable and Annunciator Assembly	7-43
18	Scan Control Assembly	7-44
19	Output Transformer Package Assembly	7-45
20	Junction Box Assembly	7-46
21	Burglar Alarm	7-47
22	Harness and Console Assembly	7-48
23	Shell Assembly	7-48

STANDARD HARDWARE LIST

7-49/7-50

# SECTION 7-PARTS CATALOG

## INTRODUCTION

This parts catalog lists procurable replacement parts for the R-74 phonograph.

The purpose of this parts catalog is to locate and identify replaceable components and to supply ordering information.

## DESCRIPTION

The parts catalog is divided into 23 major assemblies called "FIGURES" corresponding to the illustrations used. In some instances major assemblies require more than one illustration to identify the procurable parts. In this case sheet numbers are assigned to the figure, i.e. Figure 1, Sheet 1, Figure 1, Sheet 2.

Parts of riveted or welded units are not listed since repair of these parts is normally impractical in the field, however these parts are available as assemblies.

Standard hardware is indicated on each illustration by code letters which are defined in the Standard Hardware List at the rear of the catalog.

To be sure that this parts catalog contained the latest information, last minute revisions were made. In these instances the additions were added in sequence with a letter added to the identification numbers both in the parts list and corresponding illustration i.e. a A, 1 B, 1C.

The Parts List contains four columns:

- Items are listed for reference purposes only.
- The assembly listed has all piece parts indexed below.
- The item listed is an alternate part.
- Two or more assemblies are listed together in one illustration and the same parts are used but in different quantities.

ROWE Part No. - This column lists the part number of the item which should be specified for ordering purposes.

Description - This column contains a brief word description of the assembly or part. Each item is indented to show its proper relationship to the unit of which it is a part or to its next higher assembly.

Qty Per Assy - This column contains the quantity of the part used in the assembly. When a figure covers more than one model of an assembly, the "Qty Per Assy" column is divided to show each model.

## ORDERING REPLACEMENT PARTS

All replacement parts must be ordered directly from an authorized ROWE Distributor.

Once the replacement item is determined, complete a standard parts order form available from your ROWE distributor at no charge. Very often parts orders are delayed, because of inadequate or incomplete information. To insure prompt parts delivery always specify the following information:

- Part Number and Description. State color if applicable.
- Quantity required.
- Model and Serial Number of machine for which the repair part is needed.
- Complete shipping address including ZIP code.
- Shipping Instructions must be specified. If the shipping method selected is Parcel Post, Air Parcel Post, United Parcel Service or Air UPS, indicate an alternate shipping method if there is a possibility the packages may exceed the size and weight limits established by these services. If you would like ROWE to select the best way to ship your parts order, specify "BEST WAY". If fastest delivery is the requirement, specify "FASTEST WAY". ROWE will select the carrier for those orders which justify shipment by truck.

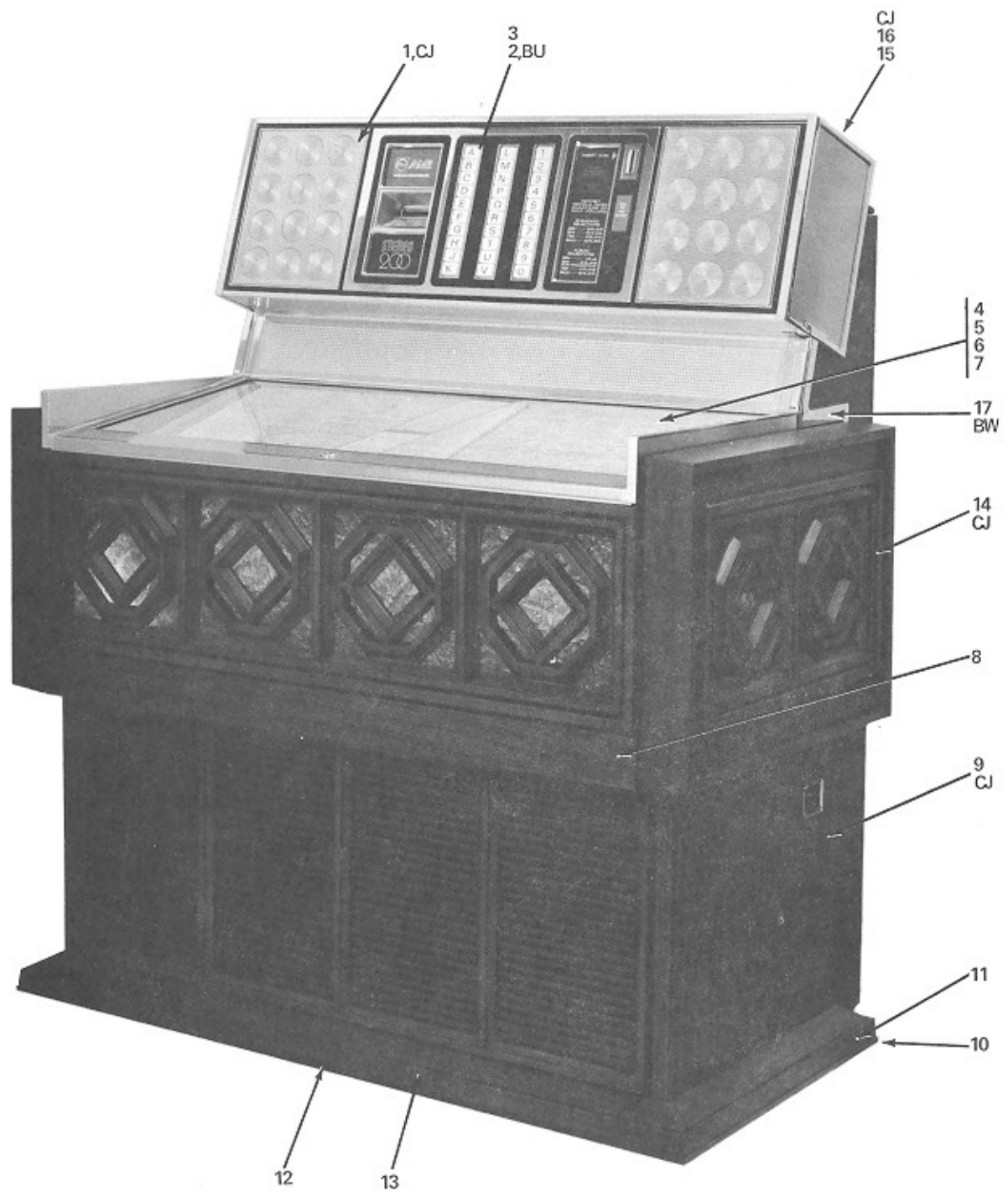


FIG. AND INDEX NO.	ROWE PART NO.	DESCRIPTION	QTY. PER ASSY
1-	601-07500	Phonograph Final Assembly, Model R-74, Wood Style (Classic)	
1-	602-07500	Phonograph Final Assembly, Model R-74, Blue Style (Arlington)	
1-	603-07500	Phonograph Final Assembly, Model R-74, Red Style (Export Only)	
	204-17305	Accessories Bag Assembly containing	1
	703-00926	Solder Socket Contact, Mate-N-Lok	1
	704-00926	Solder Pin Contact, Mate-N-Lok	1
	716-00913	Slip-On Terminal Lug	10
	710-00926	Pin Contact	1
	711-00926	Socket Contact	1
	701-00975	Universal Connector Pin Contact	1
	702-00975	Universal Connector Socket Contact	1
	701-00720	2 Amp Cartridge Fuse	2
	707-00720	1/4 Amp Cartridge Fuse (Used on Credit Computer)	1
	301-07442	Panel, Decorative (Covers Bill Acceptor Openings When No B.A. Is Used)	1
	201-17557	Retainer, Insert (To Retain Decorative Panel Above)	1
	301-07528	Universal Price Card Kit	1
	201-17536	Price Card, 2/25¢	1
1	601-07587	Selector And Speaker Panel Assembly (See Fig. 2)	1
2	601-07555	Selector Assembly (See Figure 3)	1
3	201-17501	Stud	1
4	601-07589	Top Door Assembly (See Figure 4)	1
5	201-17528	Pin, Hinge	2
6	7 -01430	Ring, Retaining	2
7	710-01430	Ring, Retaining	2
8	601-07592	Front Door Assembly, Wood Style (See Figure 5)	1
8	602-07592	Front Door Assembly, Blue Style (See Figure 5)	1
8	603-07592	Front Door Assembly, Red Style (See Figure 5)	1
9	401-06846	Overlay, Side Panel, R.H.	1
	401-06845	Overlay, Side Panel, L.H.	1
10	301-07480	Strap, Protective, Side	2
11	401-06811	Kickrail, Side	2
12	301-07479	Strap, Protective, Front	2
13	401-06810	Kickrail, Front	1
14	601-07668	Side Panel Assembly, Wood Style, L.H. (See Figure 6)	1
	601-07669	Side Panel Assembly, Wood Style, R.H. (See Figure 6)	1
14	602-07668	Side Panel Assembly, Blue Style, L.H. (See Figure 6)	1
	602-07669	Side Panel Assembly, Blue Style, R.H. (See Figure 6)	1
14	603-07668	Side Panel Assembly, Red Style, L.H. (See Figure 6)	1
	603-07669	Side Panel Assembly, Red Style, R.H. (See Figure 6)	1
15	601-07591	Top Access Door Assembly (See Figure 7)	1
16	201-15768	Clamp, Hinge	1
17	401-06801	Trim, Side, Door, R.H.	1
	401-06800	Trim, Side, Door, L.H.	1

# Phonograph Final Assembly Sheet 2

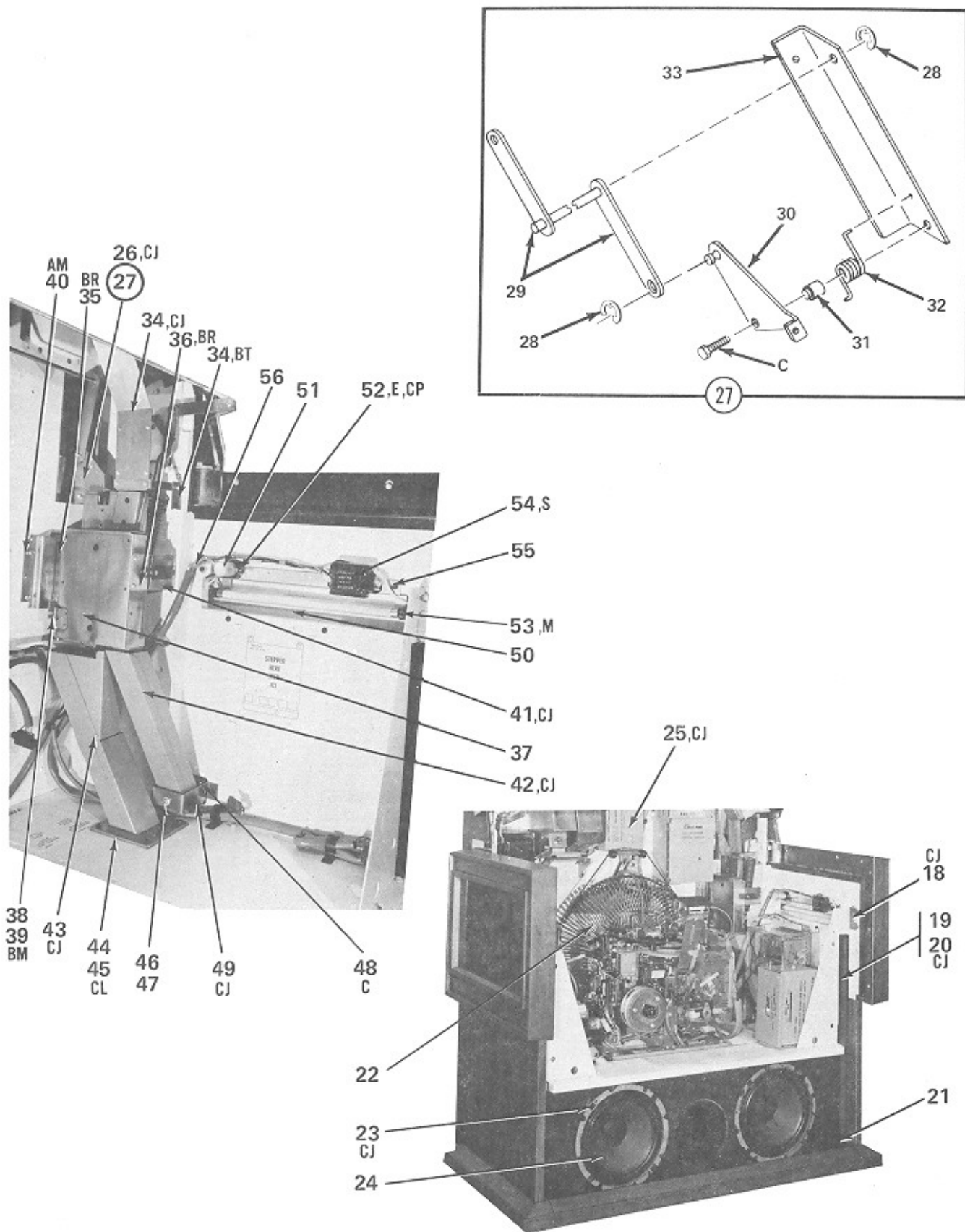
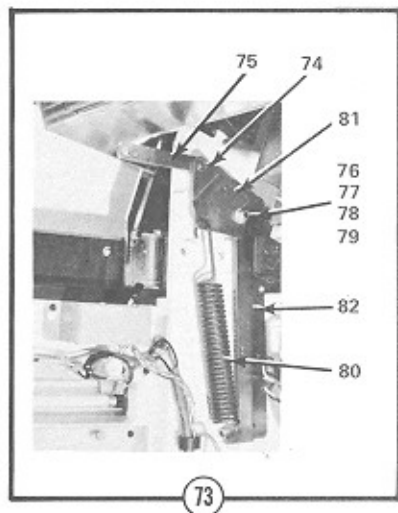
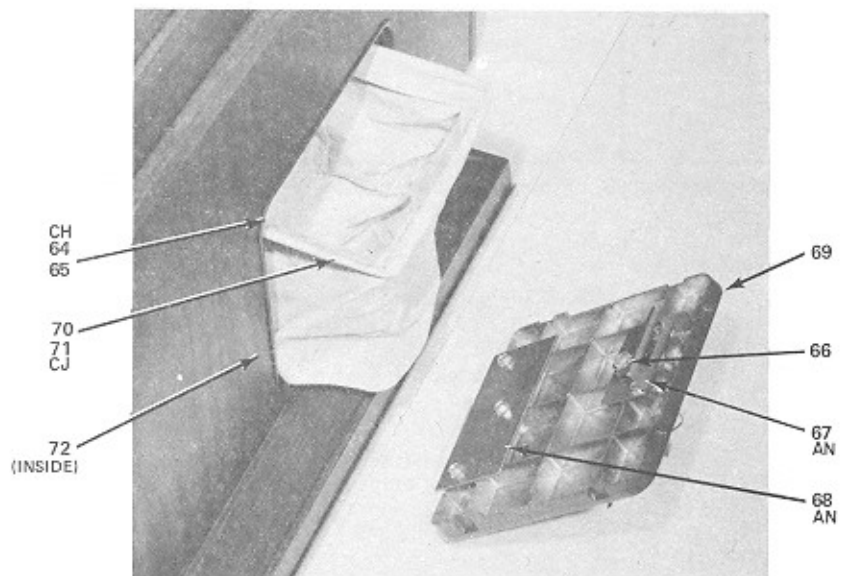


FIG. AND INDEX NO.	ROWE PART NO.	DESCRIPTION	QTY. PER ASSY
1-	601-07500	Phonograph Final Assembly, Model R74, Wood Style (Classic) (Continued)	
1-	602-07500	Phonograph Final Assembly, Model R74, Blue Style (Arlington)	
1-	603-07500	Phonograph Final Assembly, Model R74, Red Style (Export Only)	
18	201-17525	. Catch, Front Door	2
19	201-17607	. Block Light, Front Door	2
20	301-07423	. Pivot, Front Door	2
21	711-02202	. Tape, Foam	2
22	605-03060	. Record Changer Mechanism Assembly (See Figure 8)	1
	200-11537	. Support, Lower Spring (Under Mechanism Assembly - Not Shown)	4
23	201-08795	. Bracket, Retainer (2 On Rear Of Cabinet)	10
24	401-06480	. Speaker, Low Frequency	2
25	601-07593	. MOS Credit Computer Assembly	1
26	201-17555	. Bracket, Scavenge	1
27	401-06830	. Scavenge Assembly	1
28	704-01430	. Ring, Retaining	2
29	201-17566	. Pivot Assembly	1
30	201-17591	. Link And Pin Assembly	1
31	201-17562	. Spacer	1
32	201-17565	. Spring, Torsion	1
33	201-17550	. Bracket, Scavenge	1
34	401-06829	. Upper Coin Chute Assembly	1
34A	201-17140	. Bracket, Alignment	1
	401-06877	. Rejector And Coin Switch Assembly	1
35	201-17179	. Hinge Rejector	1
36	201-14314	. Plate And Pin Assembly	1
37	401-05793	. Mounting Bracket Assembly	1
38	400-05476	. Slug Rejector (50¢)	1
38	400-05470	. Slug Rejector	1
	200-14114	. Spacer (Used With 400-05476 Only)	ALT 1
39	301-07475	. Coin Switch Assembly (4 Coin)	1
40	201-17533	. Support, Hinge	1
41	201-14295	. Catch Assembly (Rejector)	1
42	401-06831	. Slug Chute Assembly	1
43	401-06825	. Lower Coin Chute Assembly	1
44	301-07437	. Collar, Coin Chute	1
45	201-17544	. Gasket, Coin Chute	1
46	202-13578	. Nut, Elastic Stop, No.6-32	1
47	702-01200	. Washer, Flat	1
48	201-06463	. Slug Cup And Door Assembly	1
49	301-07441	. Bracket, Slug Cup Mounting	1
50	702-00601	. Lamp, Fluorescent, 12 inch, 8W Type T-5	2
51	702-00800	. Starter, Fluorescent	2
	401-06881	. Side Light Harness And Bracket Assembly, R.H.	1
	401-06880	. Side Light Harness And Bracket Assembly, L.H.	1
52	200-00295	. Socket, Starter	1
53	201-17622	. Lamp Holder	2
54	201-17308	. Ballast, 6W	1
55	401-06839	. Bracket, Light	1
56	703-00931	. Clamp, Cable	1
	202-17322	. Housing, Socket, Mate-N-Lok(3 Circuit) R.H.	1
	202-17322	. Housing, Socket, Mate-N-Lok(3 Circuit) L.H.	2
	202-17323	. Housing, Pin, Mate-N-Lok (3 Circuit)	1



73



73,CK

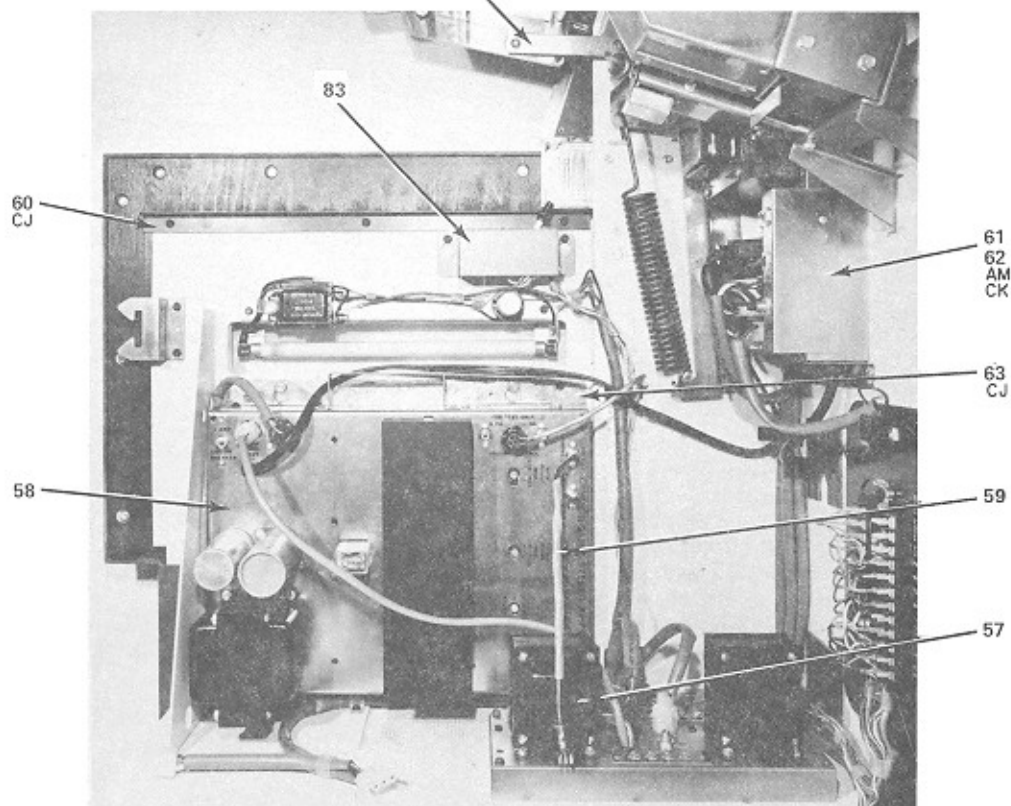




FIG. AND INDEX NO.	ROWE PART NO.	DESCRIPTION	QTY. PER ASSY
1-	601-07500	Phonograph Final Assembly, Model R-74, Wood Style (Classic)(Continued)	
1-	602-07500	Phonograph Final Assembly, Model R-74, Blue Style (Arlington)	
1-	603-07500	Phonograph Final Assembly, Model R-74, Red Style (Export Only)	
	602-02182	. Stereo Amplifier And Transformer Assembly, 64W	1
	601-07406	. Stereo Amplifier And Transformer Assembly, 120W	1
57	403-06322	. . Output Transformer Assembly, 64W (See Figure 19)	1
57	401-06336	. . Output Transformer Assembly, 120W (See Figure 19)	1
58	601-02179	. . Stereo Amplifier Assembly, 64W	1
58	601-07405	. . Stereo Amplifier Assembly, 120W	1
	602-03758	. . . Pre-Amplifier Assembly (See Schematic, page 6-6, for parts)	1
	601-02193	. . . Power Amplifier Assembly, 64W (See Schematic, page 6-7, for parts)	1
	601-07404	. . . Power Amplifier Assembly, 120W (See Schematic, page 6-8, for parts)	1
59	203-09257	. Tone Arm Cable And Plug Assembly (Mech. To Amplifier)	1
60	201-17570	. Rail, Support, Top Door	2
61	401-06703	. Junction Box Assembly (See Figure 20)	1
62	200-9256	. Bracket, Junction Box Assembly Mounting	1
63	401-02426	. Mounting Bracket Assembly, Amplifier	1
64	414-05276	. Frame, Cash Box Door	1
65	200-11449	. Clip, Speed, "U" Type	1
66	210-11866	. Cash Box Door Assembly	1
67	716-01600	. Lock, Cylinder	1
68	200-06695	. Support, Lock	1
69	200-07703	. Bracket, Catch	1
70	616-03267	. Door, Cash Box	1
71	301-07026	. Bag, Cash	1
72	402-06495	. Support, Cash Bag	1
73	206-13723	. Burglar Alarm Kit	OPT
	200-13991	. Power Pack, Alarm	1
	604-04450	. Burglar Alarm Assembly (See Figure 21)	1
	301-07419	. Spring Assembly, L.H.	1
	301-07420	. Spring Assembly, R.H.	1
74	710-01430	. Ring, Retaining	1
75	201-15691	. Link And Pin Assembly	1
76	204-13578	. Nut, Elastic Stop	1
77	200-13900	. Pin, Lever	1
78	708-01214	. Washer	1
79	719-01208	. Washer	1
80	301-07421	. Spring	1
81	201-15672	. Lever, Spring, L.H.	1
81	201-15673	. Lever, Spring, R.H.	1
82	301-06988	. Support, Spring, L.H.	1
82	301-06989	. Support, Spring, R.H.	1
83	601-07590	. Harness And Console Assembly (See Figure 22)	1

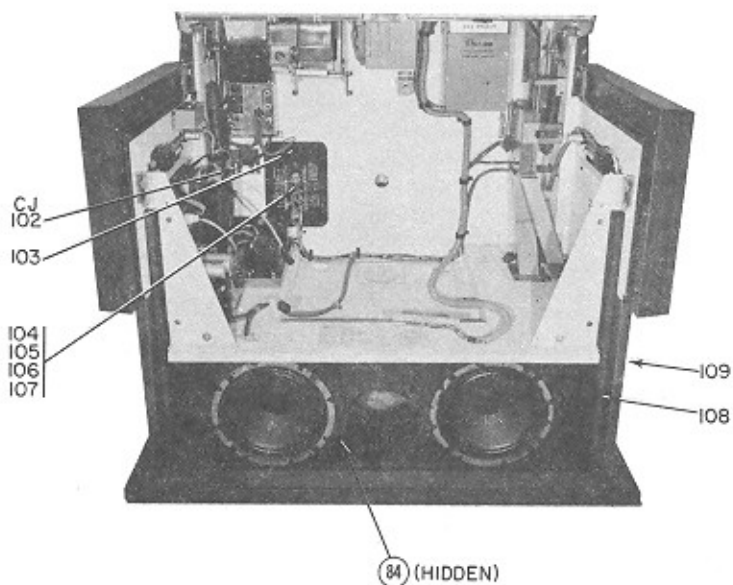
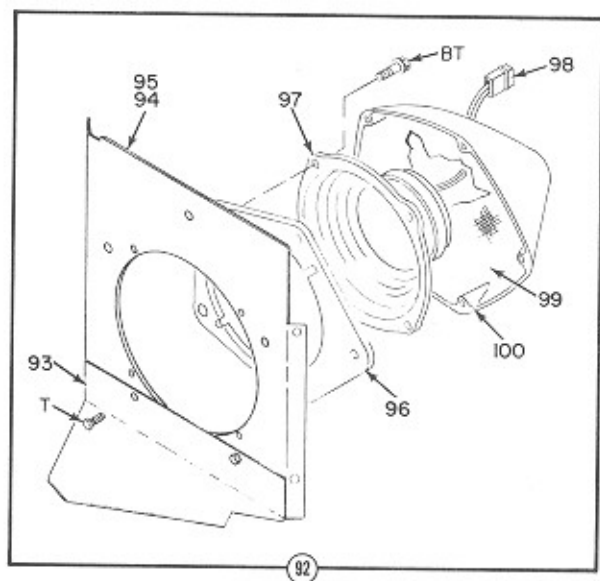
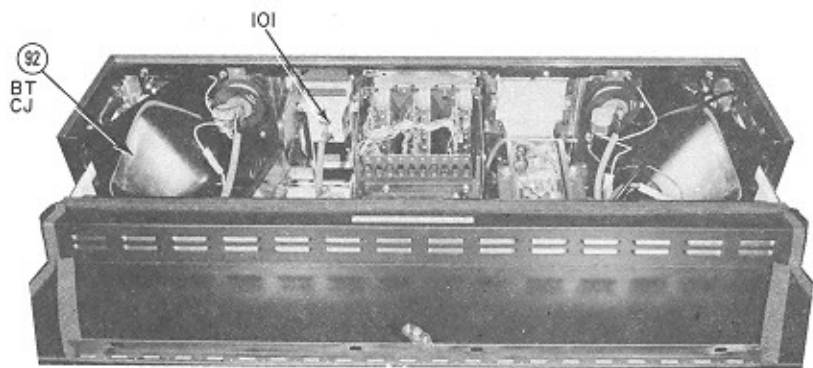
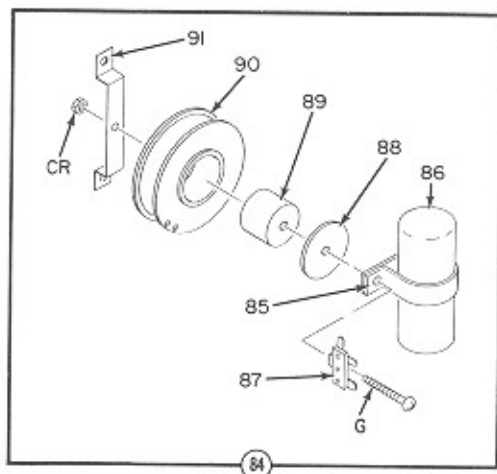


FIG. AND INDEX NO.	ROWE PART NO.	DESCRIPTION	QTY. PER ASSY
1-	601-07500	Phonograph Final Assembly, Model R-74, Wood Style (Classic) (Continued)	
1-	602-07500	Phonograph Final Assembly, Model R-74, Blue Style (Arlington)	
1-	603-07500	Phonograph Final Assembly, Model R-74, Red Style (Export Only)	
84	303-06284	. Speaker Network Assembly	1
85	712-00931	. . Clamp, Cable	1
86	200-14853	. . Capacitor, Electrolytic, 68 MFD, 50V	1
87	200-13244	. . Strip, Terminal	1
88	704-01200	. . Washer, Flat	1
89	710-01211	. . Spacer	1
90	201-14852	. . Inductor, 10 mH	1
91	200-09297	. . Bracket, Mounting	1
92	401-06827	. Speaker Assembly, L.H.	1
92	401-06828	. Speaker Assembly, R.H.	1
93	301-07481	. . Block, Light and Sound, L.H.	1
93	301-07482	. . Block, Light and Sound, R.H.	1
94	401-06851	. . Bracket, Speaker Mounting, L.H.	1
94	401-06852	. . Bracket, Speaker Mounting, R.H.	1
95	208-03709	. . Eyelet	4
96	300-06162	. . Gasket, Speaker	1
97	401-06882	. . Speaker, Mid/High Frequency	1
98	206-12445	. . Housing, Pin, Mate-N-Lok (2 Circuit)	1
99	200-13265	. . Pad, Acoustical	2
100	600-02583	. . Cover, Speaker	1
101	200-50562	. Lamp, Pilot (Credit Lights)	2
102	201-17593	. Cover, Cord Hole	1
103	204-17320	. Plug and Switch Assembly	1
	207-13081	. . Cord and Switch Assembly	1
	203-17323	. . Housing, Pin, Mate-N-Lok	1
104	200-01799	. Knob, Volume Control	1
105	200-02649	. Palnut	1
106	201-13935	. Volume Control and Terminal Assembly	1
107	201-14101	. Volume Control Harness Assembly	1
	702-00934	. Clamp, Cable, 13/16" Dia.	11
	702-00931	. Clamp, Cable, 3/16" Dia.	1
	703-00931	. Clamp, Cable, 1/4" Dia.	2
	704-00931	. Clamp, Cable, 5/16" Dia.	2
	705-00931	. Clamp, Cable, 3/8" Dia.	5
	707-00931	. Clamp, Cable, 1/2" Dia.	6
	708-00931	. Clamp, Cable, 9/16" Dia.	3
108	201-17611	. Acoustical Pad	1
109	601-07550	. Shell Assembly (See Figure 23)	1

# Selector and Speaker Panel Assembly

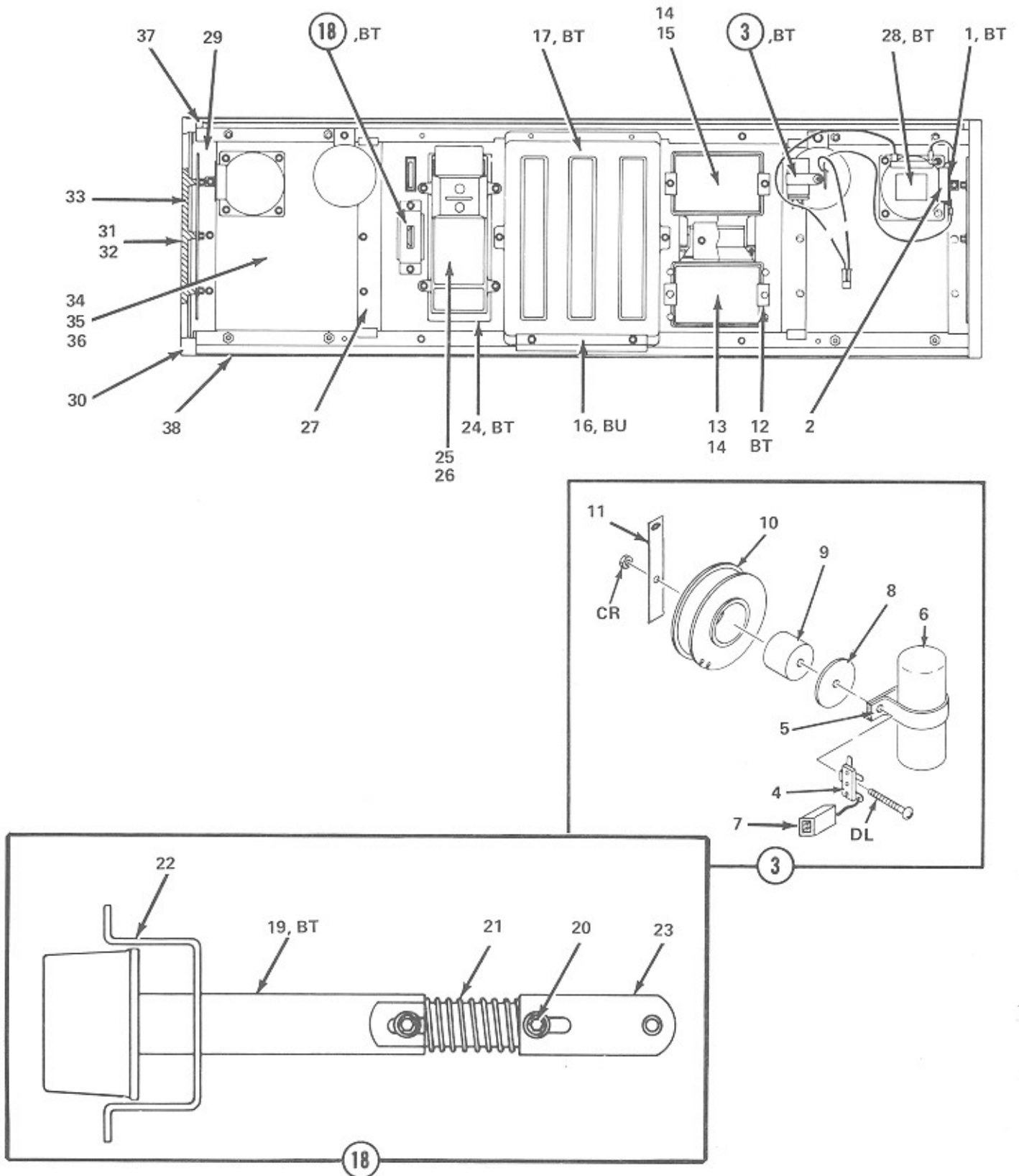


FIG. AND INDEX NO.	ROWE PART NO.	DESCRIPTION	QTY. PER ASSY
2-	601-07587	Selector and Speaker Panel Assembly (Figure 1, Item 1)	REF
	203-14957	Speaker Capacitor Assembly	2
1	200-14952	Strip, Terminal	1
2	200-11455	Capacitor, Speaker, 2.5 MFD, 50V (Midwec Type M3-240)	1
3	301-07485	Speaker Network Assembly	2
4	200-13244	Strip, Terminal	1
5	716-00931	Clamp, Cable	1
6	201-17612	Capacitor, AC Electrolytic, 12.5 MFD, 50V	1
7	206-12445	Housing, Pin, Mate-N-Lok, 2 Circuit	1
8	704-01200	Washer, Flat	1
9	710-01211	Spacer	1
10	201-17614	Inductor, 10 mH	1
11	201-17585	Strap, Mounting, Cross-Over Network	1
12	201-17594	Retainer	4
13	201-17510	Panel, Product Identification	1
14	201-17509	Window, Legend ("B" Glass, Double Strength, 4"x2-3/4"x.115/133 Thk.)	2
15	201-17511	Panel, Stereo	1
16	201-17504	Retainer	1
17	401-06816	Selector Panel Insert Assembly	1
18	301-07471	Shaft and Stop Assembly	1
19	201-17507	Button and Shaft Assembly	1
20	202-09225	Spacer	2
21	200-14408	Spring, Compression	1
22	301-07411	Bracket, Stop	1
23	201-17564	Shaft and Pin Assembly	1
24	601-07673	Light Housing	1
25	201-17581	Background, Price Card	1
26	301-07412	Window Price Card ("B" Glass, Double Strength, 7-7/8"x2-7/8"x.115/.133 Thk.)	1
27	401-06815	Selector-Coin Insert Assembly	1
28	300-06788	Speaker, High Frequency	2
29	401-06840	Bracket, Trim	2
30	401-06869	Retainer, Top Panel, L.H.	1
	401-06870	Retainer, Top Panel, R.H.	1
31	601-07581	Grille, Side	2
32	301-07484	Backing, Grille, Side	2
33	601-07563	Trim, Side Speaker, R.H.	1
	601-07562	Trim, Side Speaker, L.H.	1
34	601-07570	Grille, Front	2
35	301-07483	Backing, Grille, Front	2
36	401-07561	Trim, Front Speaker	2
37	401-06817	Bar, Trim, Upper	1
38	401-06818	Bar, Trim, Lower	1

FIGURE  
3

# Selector Assembly

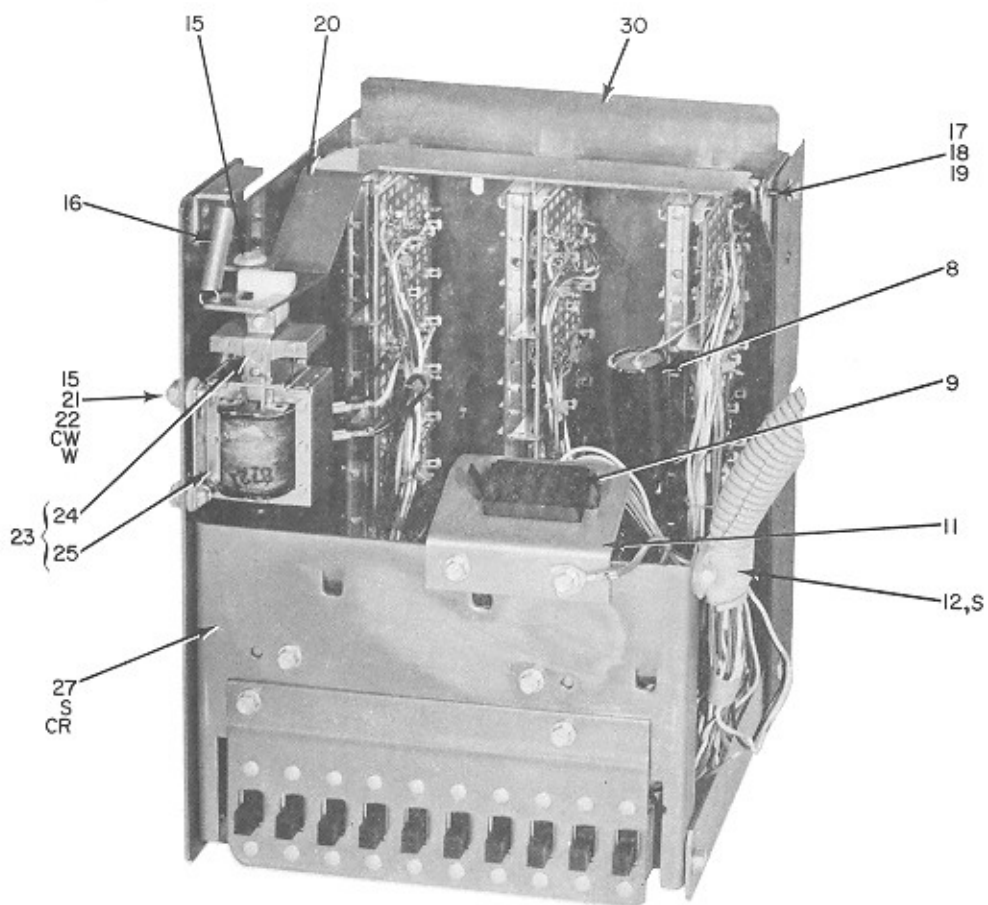
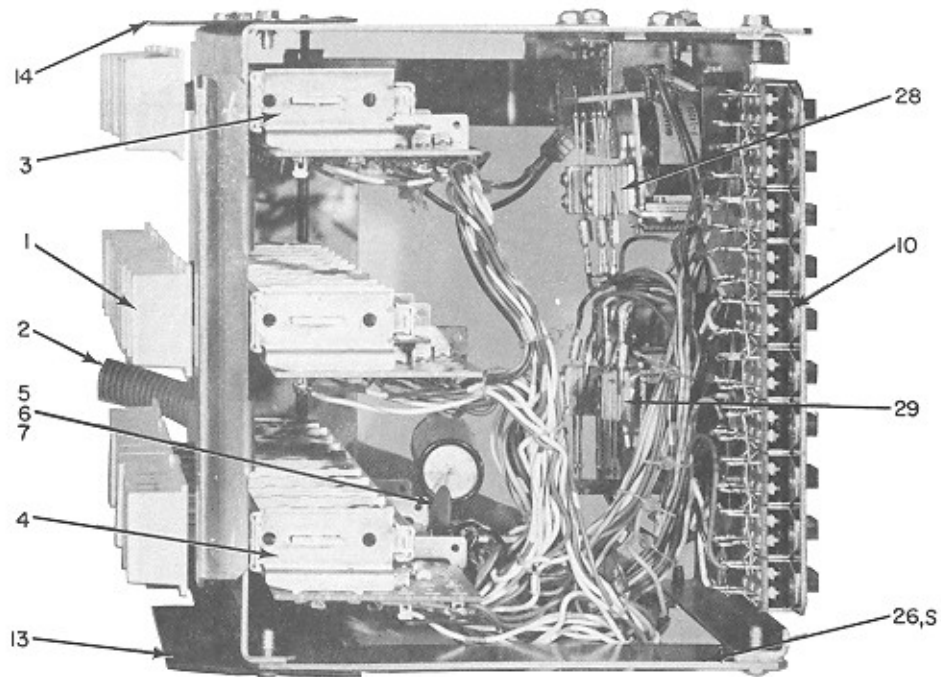


FIG. AND INDEX NO.	ROWE PART NO.	DESCRIPTION	QTY. PER ASSY
3-	601-07555	Selector Assembly (Figure 1, Item 2)	REF
1 each		The Following Pushbuttons:	
	301-07403 "A"	312-07403 "L"	301-07404 "1"
	302-07403 "B"	313-07403 "M"	302-07404 "2"
	303-07403 "C"	314-07403 "N"	303-07404 "3"
	304-07403 "D"	316-07403 "P"	304-07404 "4"
	305-07403 "E"	317-07403 "Q"	305-07404 "5"
	316-07403 "F"	318-07403 "R"	306-07404 "6"
	307-07403 "G"	319-07403 "S"	307-07404 "7"
	308-07403 "H"	320-07403 "T"	308-07404 "8"
	310-07403 "J"	321-07403 "U"	310-07404 "9"
	311-07403 "K"	322-07403 "V"	311-07404 "0"
2	601-07558	Harness and Switch Assembly	1
	300-05210	Edge Connector, 30 Contact	1
3	401-06803	Letter Pushbutton Switch	2
4	401-06802	Number Pushbutton Switch	1
5	702-00350	Diode, Silicon (IN 4002)	5
6	703-00222	Capacitor, Ceramic Disc, 0.02 MFD, 500V	2
7	706-00104	Resistor, Carbon, 1.8K, 1/2W	1
8	714-00231	Capacitor, Electrolytic, 5 MFD, 400V (Cornell Dubilier No.BRNP5-400)	1
9	204-12444	Socket, Housing, Mate-N-Lok, 12 Circuit	1
10	301-07402	Slide Switch Assembly	1
11	202-14592	Mounting Bracket	1
12	708-00931	Cable Clamp	1
13	201-17604	Selector Light Block	1
14	201-17605	Selector Light Block	1
15	200-14828	Grommet	5
16	200-10836	Tension Spring	1
17	701-01430	Retaining Ring	2
18	724-01206	Flat Washer	1
19	201-17502	Shaft	1
20	301-07401	Latch Actuating Lever	1
21	210-13578	Elastic Stop Nut, No. 6-32	4
22	200-14756	Grommet Bushing	4
23	201-17137	Solenoid and Push Rod Assembly	1
24	200-14754	Push Rod	1
25	201-17100	AC Solenoid	1
26	201-17500	Brace	1
27	401-06812	Selector Back	1
28	200-14508	Start Relay (R5)	1
29	200-14827	Select Pulse and Latch Relay (R1)	1
30	601-07557	Selector Riveted Assembly	1

**FIGURE  
4**

# Top Door Assembly

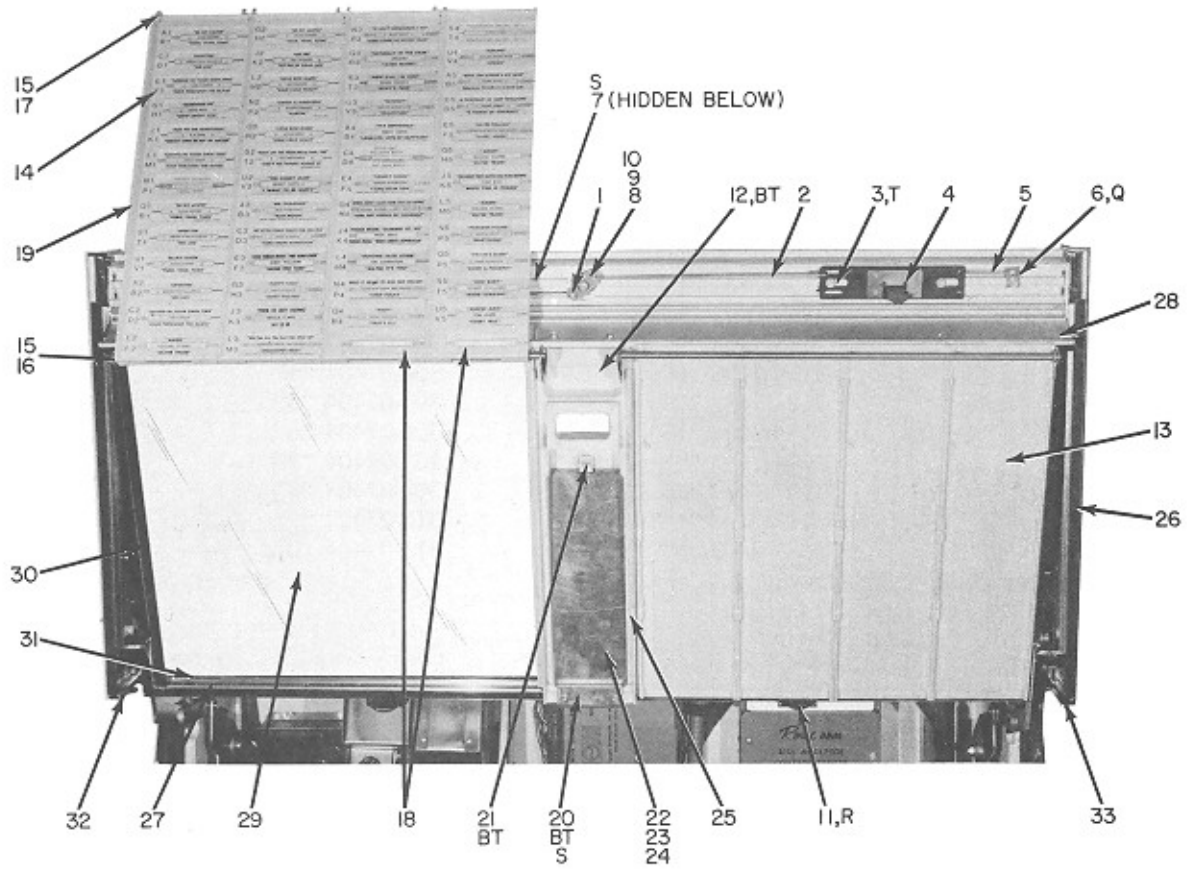




FIG. AND INDEX NO.	ROWE PART NO.	DESCRIPTION	QTY. PER ASSY
4-	601-07589	Top Door Assembly (Figure 1, Item 4)	REF
1	703-01430	. Ring Retainer	2
2	201-17534	. Link, Lock Bar	2
3	202-09225	. Spacer	4
4	201-17515	. Lock Bar Assembly, R.H.	1
	201-17514	. Lock Bar Assembly, L.H.	1
5	200-12562	. Spring	2
6	201-15674	. Retainer, Spring	2
7	201-17532	. Guide	1
8	201-14228	. Lock Bolt Assembly	1
9	706-01209	. Washer	1
10	719-01630	. Lock, Cylinder Type, Common Keying	1
11	201-17518	. Catch, Spring, Title Panel	2
12	201-17517	. Pivot Bracket and Spring Assembly	1
13	401-06821	. Title Panel Assembly, R.H.	1
	401-06820	. Title Panel Assembly, L.H.	1
14	301-07422	. Number Strip, A1 to F2 (on 401-06820)	1
	302-07422	. Number Strip, G2 to M3 (on 401-06820)	1
	303-07422	. Number Strip, N3 to R4 (on 401-06820)	1
	304-07422	. Number Strip, S4 to V5 (on 401-06820)	1
	305-07422	. Number Strip, A6 to D7 (on 401-06821)	1
	306-07422	. Number Strip, E7 to H8 (on 401-06821)	1
	307-07422	. Number Strip, J8 to P9 (on 401-06821)	1
	308-07422	. Number Strip, Q9 to Y0 (on 401-06821)	1
15	703-01430	. Ring, Retaining	4
16	201-17519	. Rod, Bottom	1
17	201-17520	. Rod, Top	1
18	201-17628	. Title Rack Insert	2
19	601-07571	. Title Rack	4
20	201-17548	. Bracket, Mounting, Record Playing Frame	1
21	201-17554	. Bracket, Retainer, License Holder	1
22	201-17551	. Bracket, License Holder	1
23	201-17553	. Card, License	1
24	201-17552	. Cover, License	1
25	601-07564	. Frame, Record Playing	1
26	719-02129	. Tape, Foam	2
27	725-02203	. Tape, Foam	1
28	201-17516	. Diffuser	2
29	301-07416	. Window, Top Door, Fully Tempered Clear Glass 15-11/16"x34-5/8"x.178/.198 Thk.	1
30	208-15794	. Channel, 14-3/4" Long	2
31	210-15794	. Channel, 34-3/8" Long	2
32	201-17568	. Light Block and Reset Assembly	1
33	201-17541	. Light Block	1
34	401-06819	. Insert, Back Trim	1
35	401-06808	. Trim, Back (Top Door)	1
36	301-07417	. Overlay, Front Trim	1
37	401-06809	. Trim, Front	1
38	301-07418	. Side, Door Support	2
39	601-07560	. Support, Door, R.H.	1
	601-07559	. Support, Door, L.H.	1

**FIGURE**  
**5**

# Front Door Assembly

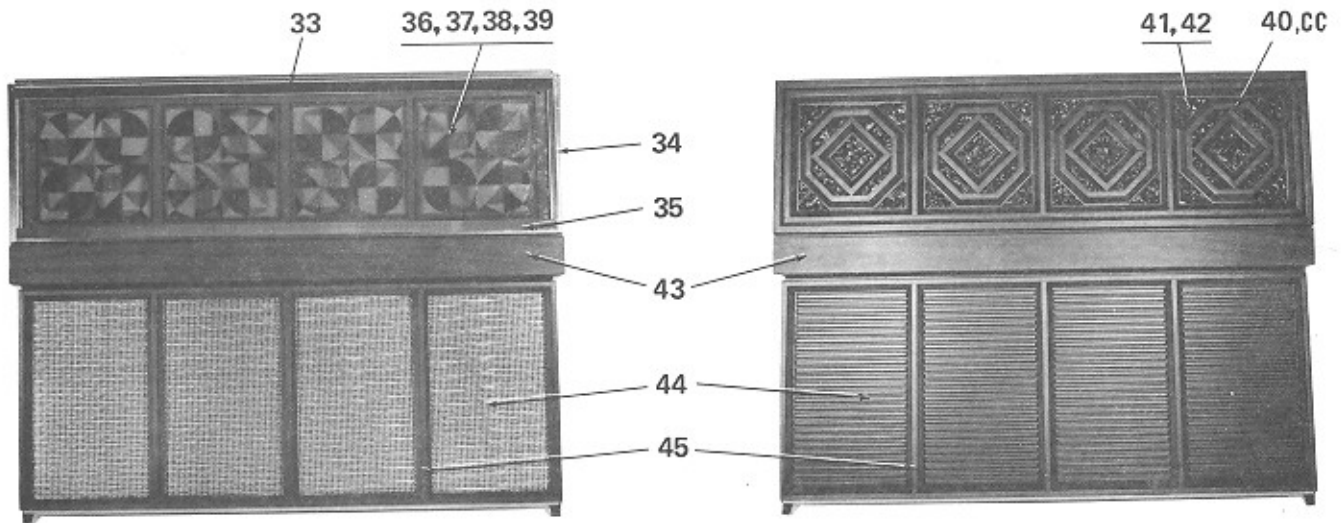
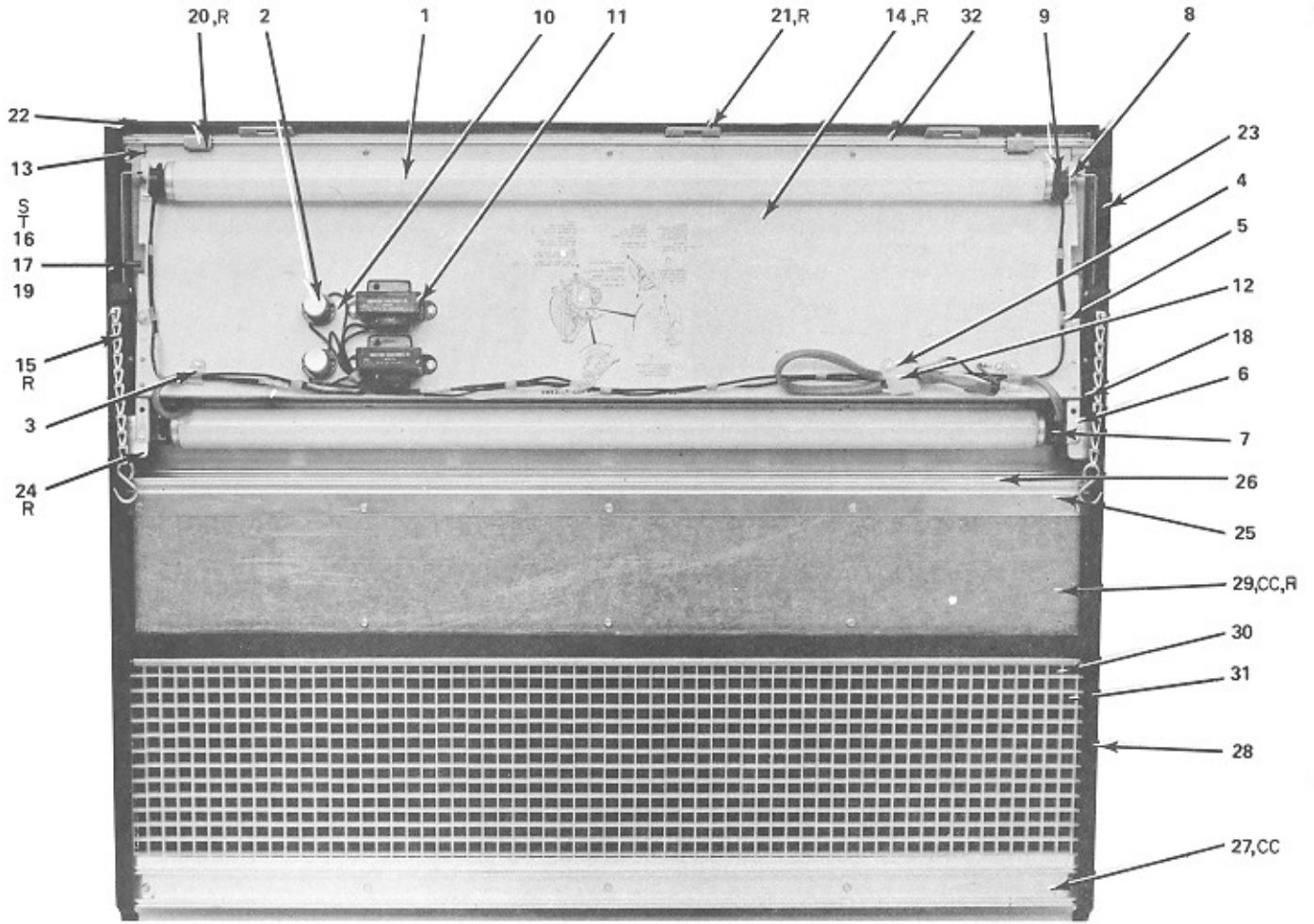


FIG. AND INDEX NO.	ROWE PART NO.	DESCRIPTION	QTY. PER ASS'Y		
			WOOD	BLUE	EX-PORT
5-	601-07592	Front Door Assembly, Wood Style (Classic) (Figure 1, Item 8)	REF		
5-	602-07592	Front Door Assembly, Blue Style (Arlington) (Figure 1, Item 8)		REF	
5-	603-07592	Front Door Assembly, Red Style (Export) (Figure 1, Item 8)			REF
1	706-00601	Fluorescent Lamp, 25W, 33in., Type T-12	2	2	2
2	703-00800	Fluorescent Starter, FS-25	2	2	2
	601-07650	Reflector Panel Assembly	1		
	602-07650	Reflector Panel Assembly		1	1
3	703-00931	Cable Clamp	2	2	2
4	705-00931	Cable Clamp	1	1	1
5	702-00931	Cable Clamp	2	2	2
	401-06838	Front Door Harness Assembly	1	1	1
6	201-17630	Lampholder Bracket (Lower)(L.H.)	1	1	1
	201-17631	Lampholder Bracket (Lower)(R.H.)	1	1	1
7	208-15808	Fluorescent Lampholder	2	2	2
8	201-17580	Lampholder Bracket (Upper)	2	2	2
9	207-15808	Fluorescent Lampholder	2	2	2
10	200-00295	Starter Socket	2	2	2
11	200-13801	25 Watt Ballast	2	2	2
12	202-17323	Pin Housing, Mate-N-Lok, 3 Circuit	1	1	1
13	722-02203	Foam Tape		1	1
14	601-07651	Reflector Panel	1	1	1
15	200-14958	Fall Stop	2	2	2
16	202-11100	Thrust Washer	4	4	4
17	202-09225	Spacer	4	4	4
18	200-14941	Tension Spring	2	2	2
19	201-17549	Latch Assembly	2	2	2
20	201-17589	Reflector Clamp		2	2
21	201-17537	Strike Plate	3	3	3
22	708-02201	Foamed Tape	1	1	1
23	723-02203	Foamed Tape	2	2	2
24	201-17587	Mounting Bracket	2	2	2
25	401-06804	Center Tie Bar	1	1	1
26	201-17608	Diffuser	1	1	1
27	401-06887	Bottom Tie Bar	1	1	1
28	601-07567	Front Door Support, L.H.	1	1	1
	601-07568	Front Door Support, R.H.	1	1	1
29	601-07569	Lower Grille Backing	1	1	1
30	401-06854	Grille Support	1	1	1
31	301-07428	Bottom Grille Foam Pad	1	1	1
32	401-06844	Top Tie Bar	1		
33	401-06807	Window Top Trim		1	1
34	401-06848	Window Side Trim, L.H.		1	1
	401-06849	Window Side Trim, R.H.		1	1
35	401-06888	Window Bottom Trim		1	1
36	301-07438	Front Door Window		1	1
37	706-00620	Window Channel, Sides		2	2
38	705-00620	Window Channel, Bottom & Top		2	2
39	401-06837	Front Door Scene, Blue		1	
	402-06837	Front Door Scene, Red			1
40	601-07573	Wood Panel	1		
41	401-06836	Front Panel Krinklglas	1		
42	301-07468	Front Door Diffuser	1		
43	601-07598	Center Tie Bar Overlay	1	1	1
44	601-07574	Louvred Grille	4		
44	601-07551	Perforated Grille		1	1
45	601-07575	Lower Grille Frame	1	1	1

**FIGURE  
6**

## Side Panel Assembly

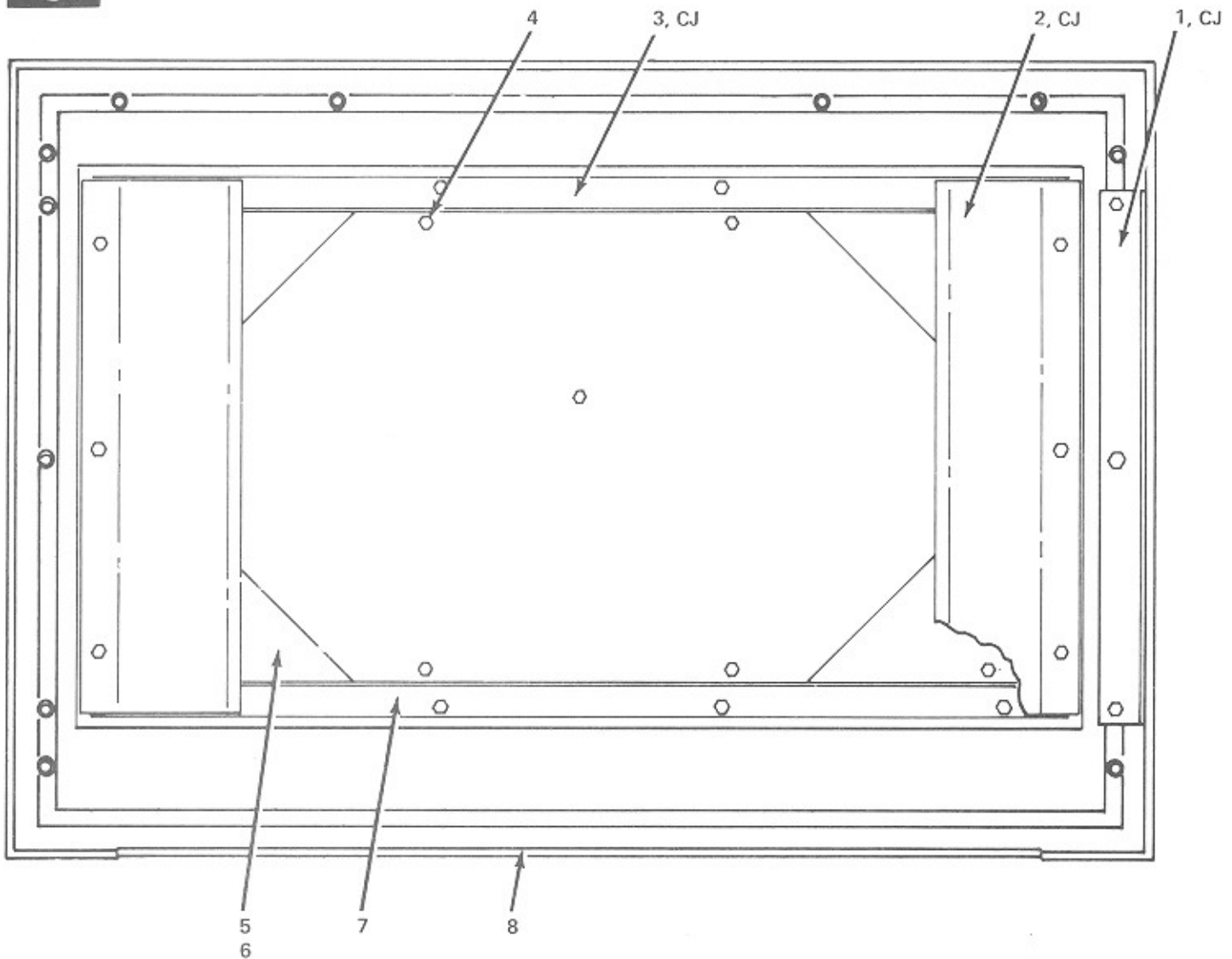


FIG. AND INDEX NO.	ROWE PART NO.	DESCRIPTION	QTY. PER ASSY		
6-	601-07668	Side Panel Assembly, Wood Style, (Classic) L.H. (Figure 1, Item 14)	REF		
6-	601-07669	Side Panel Assembly, Wood Style, (Classic) R.H. (Figure 1, Item 14)	REF		
6-	602-07668	Side Panel Assembly, Blue Style (Arlington) L.H. (Figure 1, Item 14)		REF	
6-	602-07669	Side Panel Assembly, Blue Style (Arlington) R.H. (Figure 1, Item 14)		REF	
6-	603-07668	Side Panel Assembly, Red Style (Export) L.H. (Figure 1, Item 14)			REF
6-	603-07669	Side Panel Assembly, Red Style (Export) R.H. (Figure 1, Item 14)			REF
1	301-07430	. Bracket, Retainer, Side Frame	1	1	1
2	301-07466	. Reflector	2	2	2
3	201-17547	. Strap Retaining (Long)		2	2
4	201-17312	. Screw, Type 25 Special Washer Head	11		
5	301-07467	. Diffuser	1		
5	401-06814	. Scene, Side (Blue)		1	
5	402-06814	. Scene, Side (Red)			1
6	401-06813	. Panel, Krinklglass	1		
6	301-07408	. Window, Side (Fully Tempered Clear Glass, 18-3/8"x9-3/4"x.110/.140 Thk.)		1	1
	726-02129	. Tape, Foam (Top and Bottom)		2	2
	724-02203	. Tape, Foam (Sides)		2	2
7	601-07585	. Insert, Wood	1		
8	601-07582	. Frame, Side	1	1	1

# Top Access Door Assembly

**FIGURE  
7**

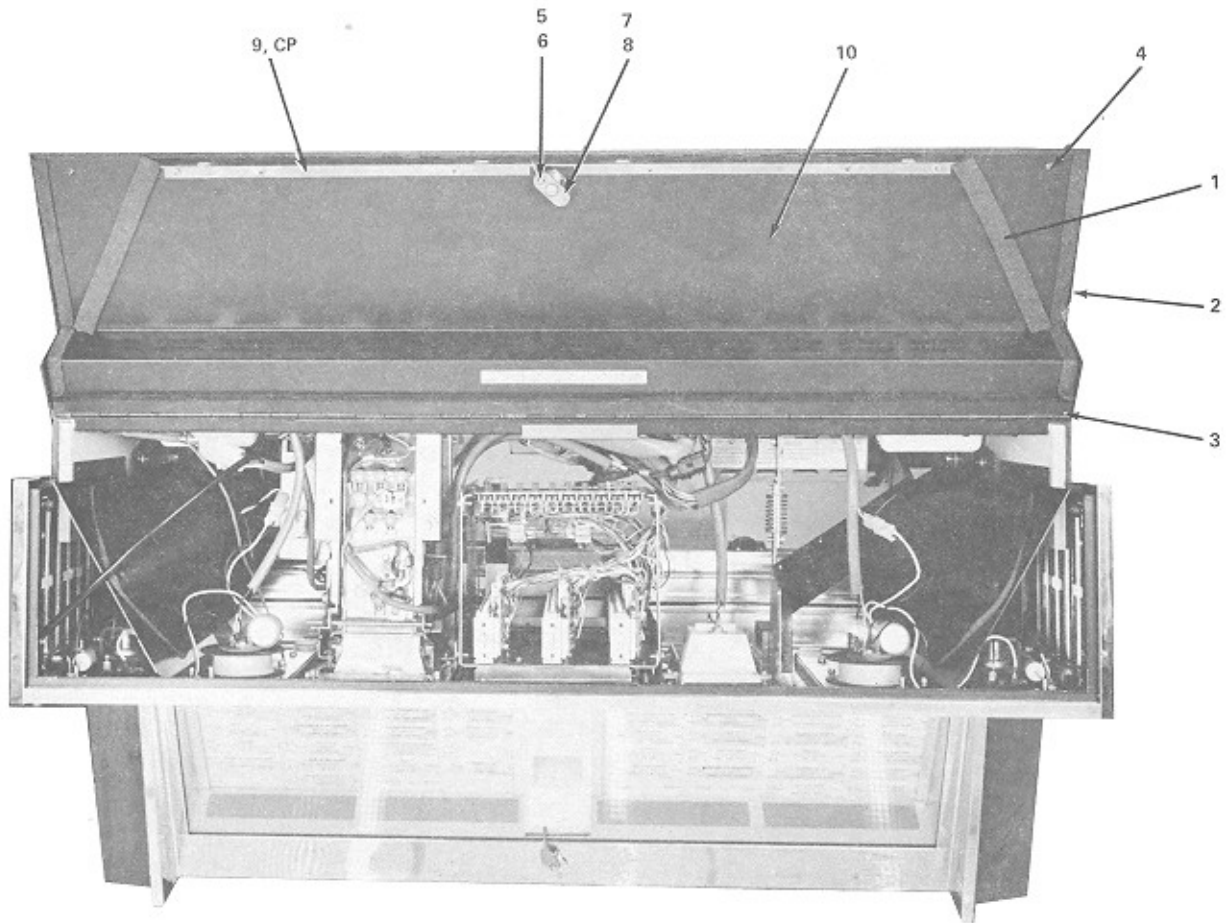


FIG. AND INDEX NO.	ROWE PART NO.	DESCRIPTION	QTY. PER ASSY
7-	601-07591	Top Access Door Assembly (Figure 1, Item 15)	REF
1	726-02203	. Tape, Foam	2
2	725-02129	. Tape, Foam	2
3	703-02121	. Tape, Foam	1
4	721-02203	. Tape, Foam	1
5	703-01430	. Ring, Retaining	1
6	201-15718	. Link, Latch Bar	1
7	202-14228	. Lock Bolt Assembly	1
8	719-01630	. Lock, Cylinder, Common Keying	1
9	301-07435	. Hinge, Latch	1
10	601-07659	. Top Door Weld Assembly	1

# Mechanism Assembly Sheet 1

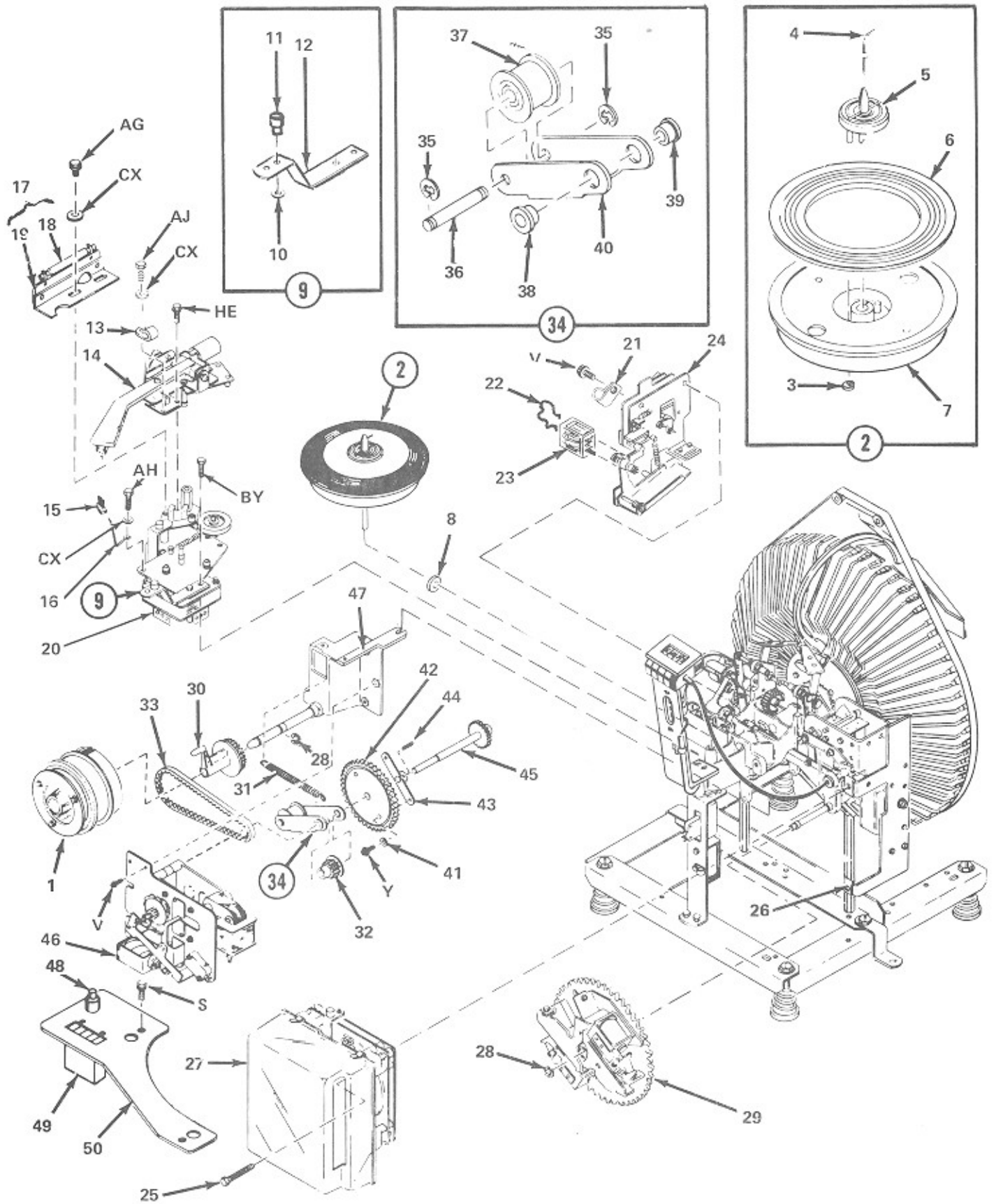


FIG. AND INDEX NO.	ROWE PART NO.	DESCRIPTION	QTY. PER ASSY
8-	605-03060	Mechanism Assembly (Figure 1, Item 22)	REF
1	303-05465	. Playmeter Wheel Assembly (See Figure 9)	1
2	301-05237	. Turntable Assembly	1
3	701-01430	. Ring, Retaining	1
4	200-10867	. Wire, Trip	1
5	201-12554	. Hub, Turntable	1
6	301-05235	. Face, Turntable	1
7	401-05069	. Turntable and Shaft Assembly	1
8	725-01208	. Washer, Plain	1
9	201-14747	. Gripper Bow Rest Assembly	1
10	202-01437	. Ring, Retaining	1
11	200-10897	. Rest, Gripper Bow	1
12	200-14710	. Bracket, Gripper Bow	1
13	701-00931	. Clamp, Cable	1
14	306-05124	. Tone Arm Assembly (See Figure 10)	1
15	200-02182	. Brush	1
16	200-11569	. Clip, Brush	1
17	201-10891	. Cutoff Switch Assembly	1
18	200-10726	. Switch, Reed	1
19	201-10917	. Terminal Board and Bracket Assembly	1
20	401-05076	. Turntable Motor and Plate Assembly (See Figure 11)	1
21	702-00931	. Clamp, Cable	1
22	200-12869	. Spring, Relay Retaining	1
23	200-12751	. Relay Assembly	1
24	401-05075	. Cam Switch and Motor Assembly (See Figure 12)	1
25	200-10789	. Bolt, Mounting, No.1/4-20	3
26	200-11587	. Speednut, No. 1/4-20	2
27	406-05012	. Search Unit and Pin Wheel Assembly (See Figure 13)	1
28	702-01430	. Ring, Retaining	2
29	401-05024	. Stop Switch Assembly (See Figure 15)	1
30	300-05149	. Pulley, Playmeter	1
31	200-10896	. Spring, Tension	1
32	200-10880	. Pulley	1
33	201-10878	. Belt, Timing	1
34	201-11012	. Idler Bracket Assembly	1
35	703-01430	. Ring, Retaining	2
36	200-10879	. Pin, Idler	1
37	200-03843	. Roller, Belt	1
38	707-01460	. Bearing	1
39	706-01460	. Bearing	1
40	200-10877	. Bracket, Idler	1
41	704-01222	. Washer, External Tooth	2
42	301-05181	. Pinion and Plate Assembly	1
43	200-10826	. Hub, Gear	1
44	206-01130	. Pin, Roll	2
45	201-11100	. Magazine Drive Shaft Assembly	1
46	403-05022	. Sprag Assembly (Magazine Motor)(See Figure 16)	1
47	301-05125	. Motor Bracket Assembly	1
48	201-15818	. Switch, Momentary Contact, Pushbutton Type	1
49	201-50657	. Counter Assembly	1
50	301-05242	. Plate, Counter Mounting	1

**FIGURE 8**

# Mechanism Assembly Sheet 2

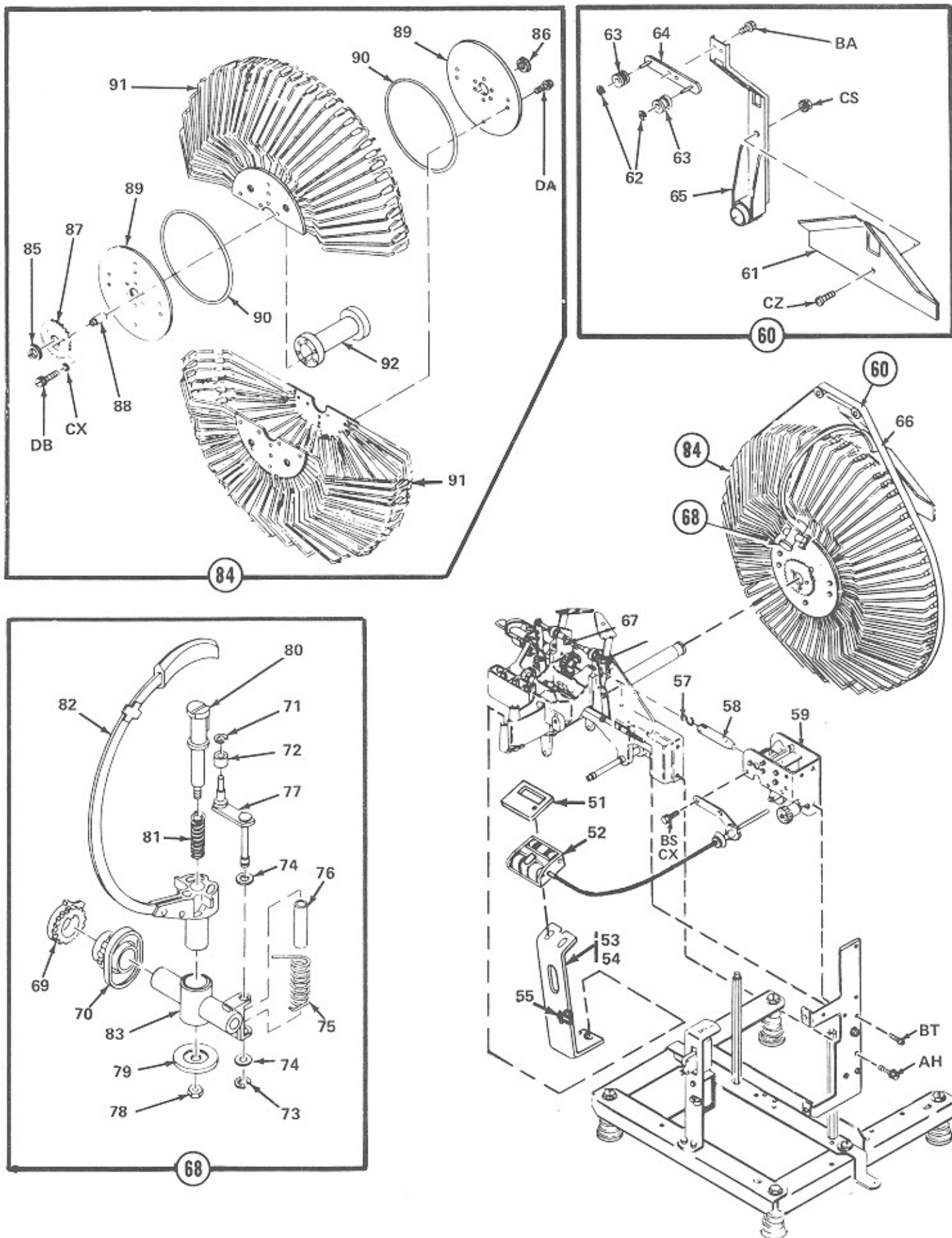




FIG. AND INDEX NO.	ROWE PART NO.	DESCRIPTION	QTY. PER ASSY
8-	605-03060	Mechanism Assembly (Continued)	
51	300-06452	. Trim, Annunciator	1
52	301-05241	. Cable and Annunciator Assembly (See Figure 17)	1
53	200-14739	. Strap	1
54	301-06615	. Annunciator Bracket Assembly	1
55	704-00931	. Clamp, Cable	1
56		. Not Used	1
57	200-11513	. Link, Toggle Plunger	1
58	201-11515	. Plunger Assembly	1
59	303-05111	. Scan Control Assembly (See Figure 18)	1
60	303-05169	. Guide and Belt Support Assembly	1
61	400-05049	. . Stop, Record	1
62	703-01430	. . Ring, Retaining	2
63	200-03843	. . Roller	2
64	201-10894	. . Roller Bracket Assembly	1
65	301-05147	. . Gripper Bow Assembly	1
66	201-10895	. Belt	1
67	200-10792	. Pin, Trunnion	2
68	401-05390	. Gripper Bow and Trunnion Assembly	1
69	300-05122	. . Gear, Trunnion	1
70	400-05013	. . Gear, Cam	1
71	707-01430	. . Ring, Retaining	1
72	200-12537	. . Roller	1
73	703-01430	. . Ring, Retaining	1
74	721-01207	. . Washer, Flat	2
75	200-12538	. . Spring, Torsion	1
76	200-12536	. . Bearing, Sleeve	1
77	201-12532	. . Pawl Lever and Shaft Assembly	1
78	210-13578	. . Nut, Stop	1
79	201-10815	. . Follower, Cam	1
80	201-10808	. . Shoe, Inner	1
81	200-10811	. . Spring, Record Release	1
82	301-05197	. . Transfer Arm and Hub Assembly	1
83	301-05121	. . Trunnion	1
84	602-03010	. Magazine Assembly	1
85	714-01460	. . Bearing	1
86	701-01460	. . Bearing	1
87	300-05191	. . Gear	1
88	200-11518	. . Spacer	3
89	300-05100	. . Support, Separator	2
90	200-10803	. . Ring, Cord	2
91	402-05044	. . Separator Assembly	2
92	300-05101	. . Spacer, Support	1

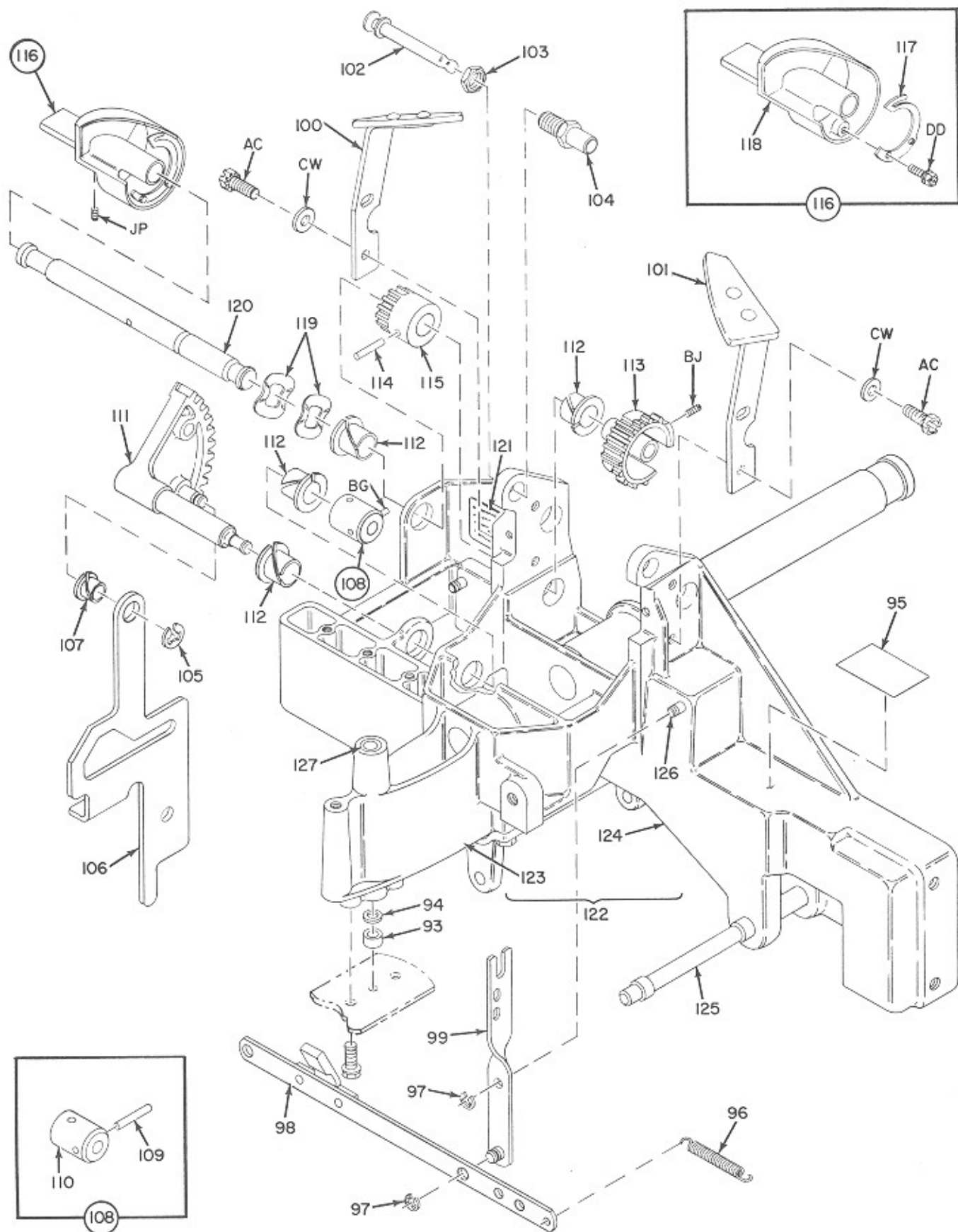


FIG. AND INDEX NO.	ROWE PART NO.	DESCRIPTION	QTY. PER ASSY
8-	605-03060	Mechanism Assembly (Continued)	
93	200-10866	. Bearing, Spacer	1
94	200-10364	. Bearing, Thrust	1
95	201-11004	. Nameplate, Mechanism	1
96	200-10955	. Spring, Tension	1
97	703-01430	. Ring, Retaining	4
98	201-10823	. Cross Link and Stop Assembly	1
99	201-11517	. Link and Pin Assembly	1
100	201-11520	. Record Guide Assembly (L.H.)	1
101	201-11521	. Record Guide Assembly (R.H.)	1
102	200-11528	. Pin, Toggle	2
103	704-01301	. Nut	2
104	200-10817	. Bushing, Toggle Pin	2
105	704-01430	. Ring, Retaining	1
106	200-10793	. Link, Transfer	1
107	704-01460	. Bearing	1
108	201-10809	. Collar and Pin Assembly	1
109	720-01101	. Pin, Roll	1
110	200-10799	. Collar	1
111	201-10800	. Segment Gear and Shaft Assembly	1
112	705-01460	. Bearing	4
113	400-05014	. Gear, Trunnion and Cam Drive	1
114	719-01130	. Pin, Roll	1
115	200-14175	. Gear, Camshaft	1
116	201-10892	. Tone Arm Cam Assembly	1
117	200-10909	. Spring	1
118	400-05008	. Cam	1
119	200-10820	. Washer, Wave	2
120	200-10791	. Shaft, Trunnion Drive	1
121	200-12665	. Label	1
122	403-05003	. Base Assembly	1
123	300-05205	. Support, Shaft	1
124	401-05002	. Base	1
125	200-10728	. Shaft, Stop Switch	1
126	200-10729	. Pin, Mounting	2
127	200-10377	. Bearing	2

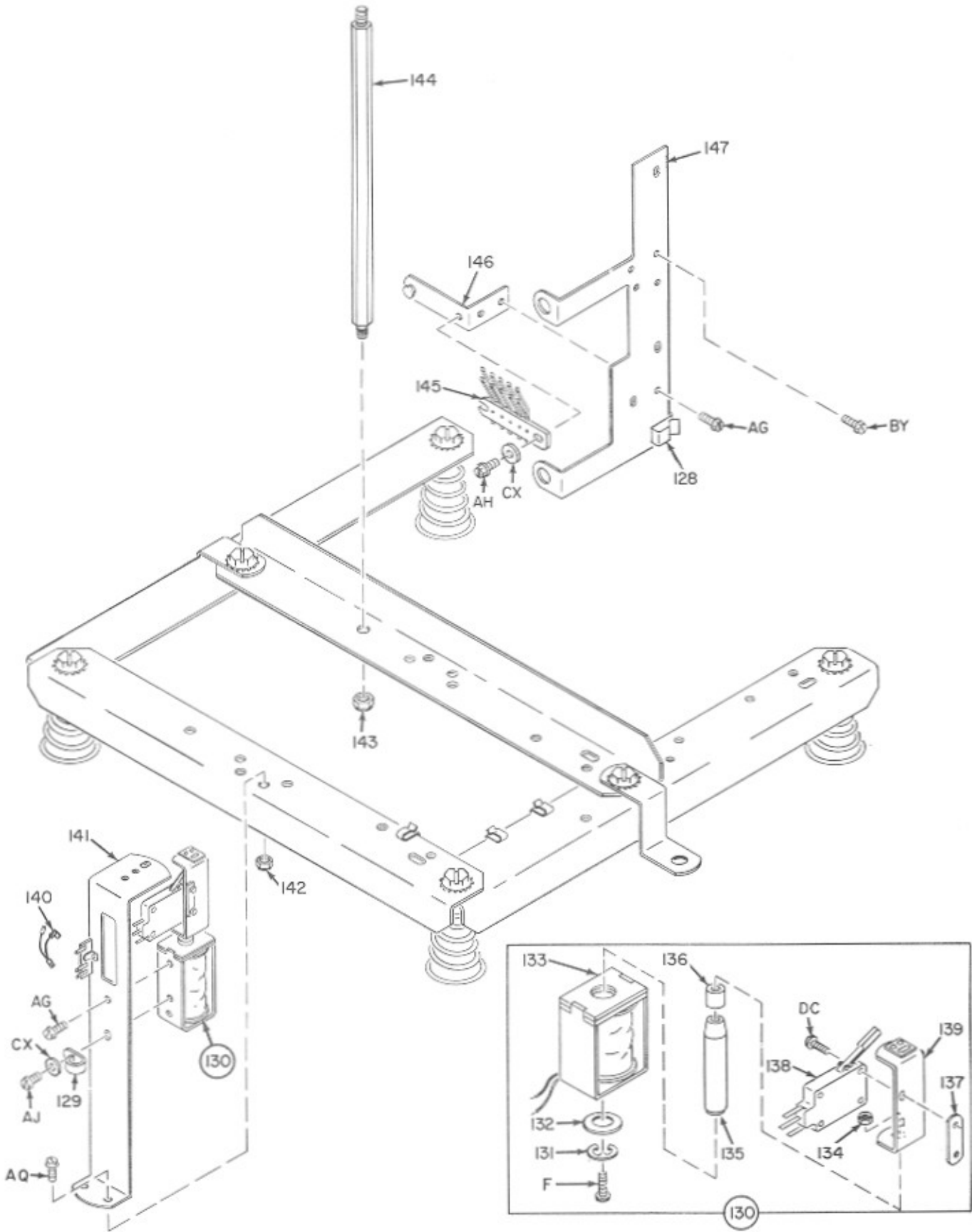


FIG. AND INDEX NO.	ROWE PART NO.	DESCRIPTION	QTY. PER ASSY
8-	605-03060	Mechanism Assembly (continued)	
128	200-07545	. Clip, Cable	2
129	705-00931	. Clamp, Cable	3
130	201-11011	. Hub Shift Assembly	1
131	702-01430	. Ring, Retaining	1
132	710-01205	. Washer, Flat	1
133	202-11505	. Solenoid Assembly	1
134	203-13578	. Nut, Stop	1
135	200-10862	. Plunger	1
136	200-10861	. Spacer	1
137	200-11017	. Plate, Nut	1
138	200-10735	. Microswitch	1
139	201-12609	. Bracket Switch	1
140	201-12586	. Wire and Termination Assembly	1
141	201-12694	. Terminal Strip and Bracket Assembly	1
142	200-11014	. Nut, Lock	2
143	200-11013	. Nut, Lock	2
144	200-10881	. Support, Mechanism	2
145	201-10949	. Wiper Blade Assembly	1
146	201-10893	. Mounting Bracket Assembly	1
147	400-05388	. Bracket, Search Unit	1

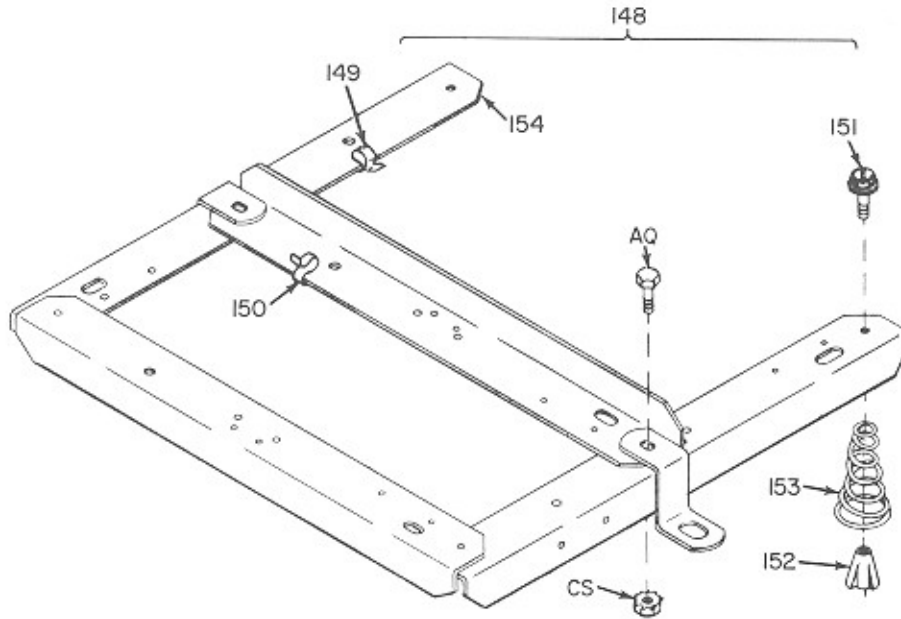


FIG. AND INDEX NO.	ROWE PART NO.	DESCRIPTION	QTY. PER ASSY
8-	605-03060	Mechanism Assembly (continued)	
148	301-06622	Mechanism Support and Spring Assembly	1
149	202-05545	Clip, Cable	1
150	200-07545	Clip, Wire	5
151	200-11538	Pin, Screw, Spring Support	4
152	200-06272	Support, Spring	4
153	200-06128	Spring	4
154	302-05142	Mechanism Support Assembly	1

# Playmeter Wheel Assembly

FIGURE  
9

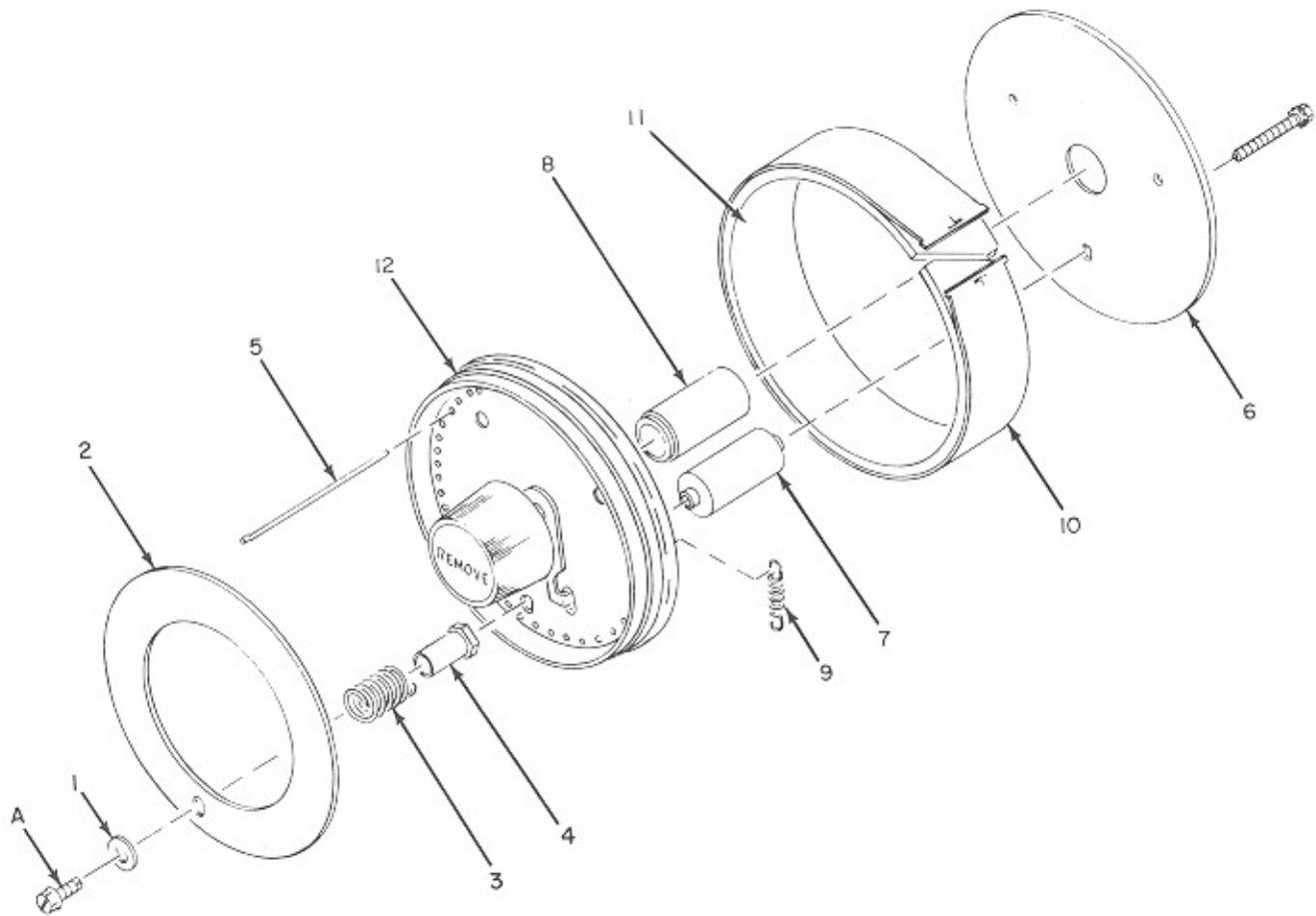


FIG. AND INDEX NO.	ROWE PART NO.	DESCRIPTION	QTY. PER ASSY
9-	303-05465	Playmeter Wheel Assembly (Figure 8, Item 1)	REF
1	702-01220	Washer, Flat, No. 6	3
2	300-06262	Plate, Reset	1
3	200-10965	Spring, Compression	3
4	200-10969	Stud, Reset Guide	3
5	200-11582	Pin, Playmeter	100
6	300-05159	Plate, Back	1
7	200-10962	Spacer	3
8	200-10968	Bearing	1
9	200-11581	Spring, Tension	1
10	300-05198	Strip, Playmeter	1
11	202-10966	Strip, Pin Loading	1
12	201-13913	Playmeter Plate Assembly	1

**FIGURE  
10**

# Tone Arm Assembly

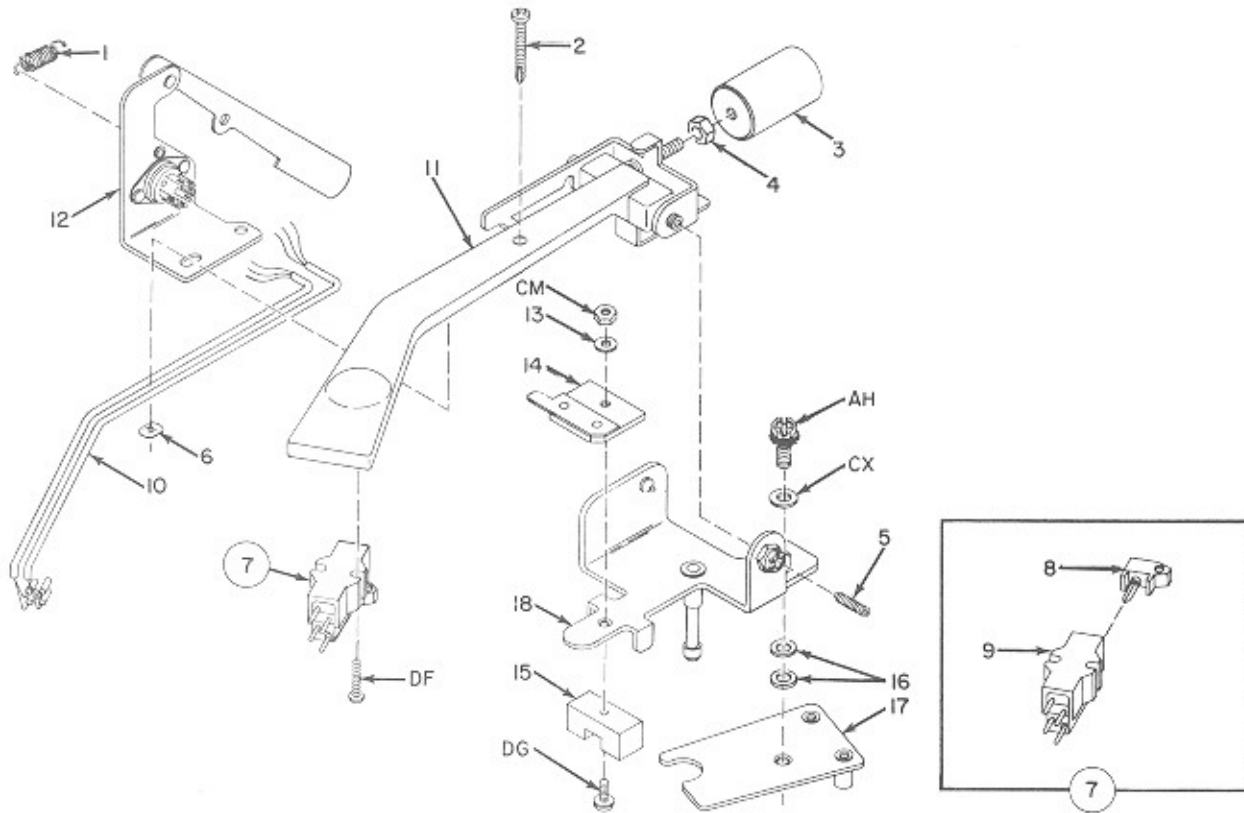


FIG. AND INDEX NO.	ROWE PART NO.	DESCRIPTION	QTY. PER ASSY
10-	306-05124	Tone Arm Assembly (Figure 8, Item 14)	REF
1	200-03713	. Spring, Tension	1
2	200-65025	. Screw, Contact	1
3	201-11585	. Counterweight	1
4	200-13306	. Nut	1
5	200-10712	. Screw, Pivot	1
6	200-10897	. Nut, Push-On	1
7	200-13011	. Cartridge, Stereo	3
8	200-13031	. Stylus	1
9	200-10873	. Cartridge	1
10	201-10874	. Cable Assembly	1
11	303-05118	. Arm and Lever Assembly	2
12	201-10785	. Bracket and Lever Assembly	1
13	724-01206	. Washer, Flat, No. 4	1
14	201-65023	. Blade, Contact	1
15	200-10724	. Magnet	1
16	719-01200	. Washer, Flat	1
17	201-10727	. Cam Plate Assembly	AR
18	201-10714	. Bracket and Shaft Assembly	1



# Turntable Motor and Plate Assembly

FIGURE  
11

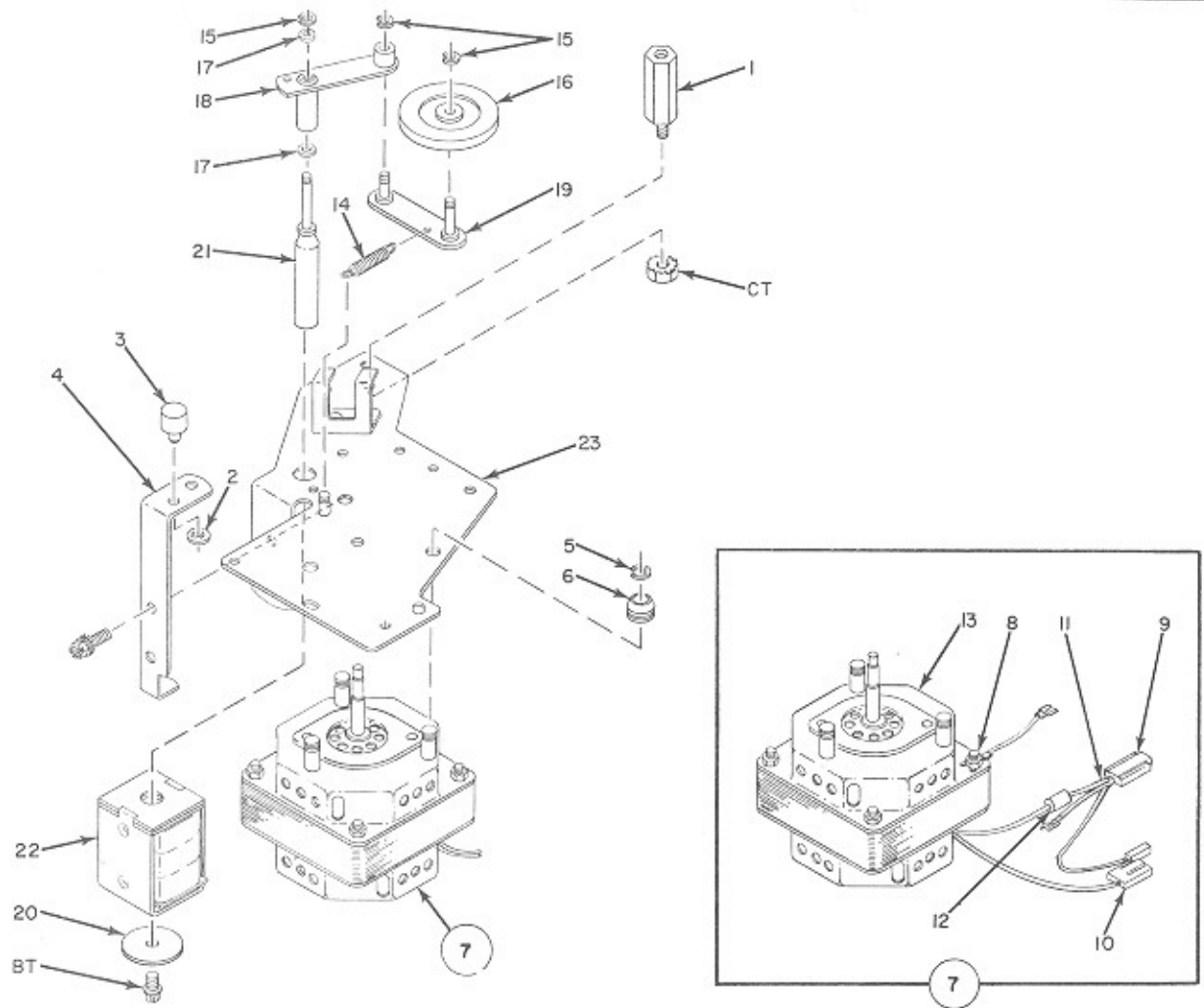


FIG. AND INDEX NO.	ROWE PART NO.	DESCRIPTION	QTY. PER ASSY
11-	401-05076	Turntable Motor and Plate Assembly (Figure 8, Item 20)	REF
1	201-10708	. Bearing, Tone Arm	1
2	702-01437	. Ring, Retaining	1
3	200-10897	. Rest, Gripper Bow	1
4	200-10886	. Bracket, Gripper Bow Rest (L.H.)	1
5	712-01430	. Ring, Retaining	3
6	200-11501	. Grommet	3
7	301-05239	. Turntable Motor Assembly	1
8	216-12300	. Wire and Lug Assembly	1
9	202-17323	. Connector, Socket (3 Circuit)	1
10	201-51106	. Receptacle, Triple (Insulation)	1
11	SPEC7065D	. Cord, 3 Conductor	14"
12	704-00921	. Connector, Solderless	1
13	300-05193	. Motor, Turntable	1
14	200-00907	. Spring, Tension	1
15	701-01430	. Ring, Retaining	3
16	201-10889	. Idler Wheel Assembly	1
17	712-01213	. Washer	2
18	201-10887	. Link and Bushing Assembly	1
19	201-10888	. Link and Pin Assembly	1
20	714-01206	. Washer	1
21	201-08003	. Plunger Assembly	1
22	202-11505	. Solenoid Assembly	1
23	301-05189	. Turntable Motor Mount Assembly	1

**FIGURE 12**

# Cam Switch and Motor Assembly

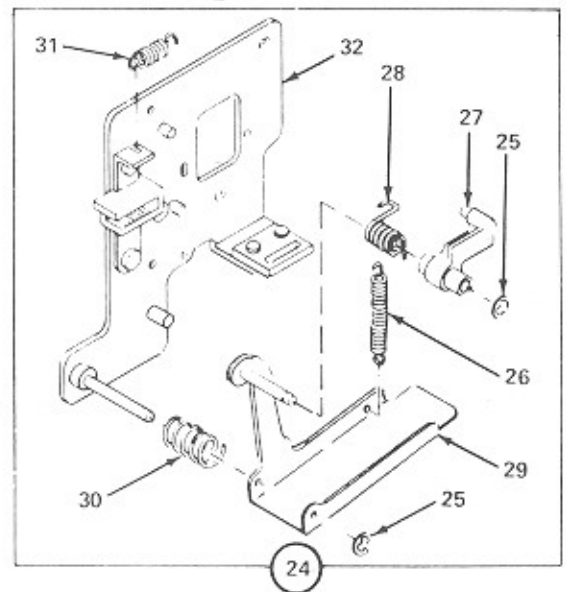
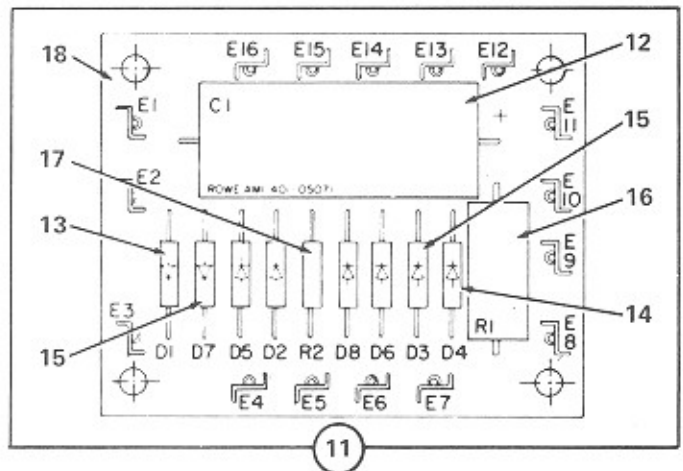
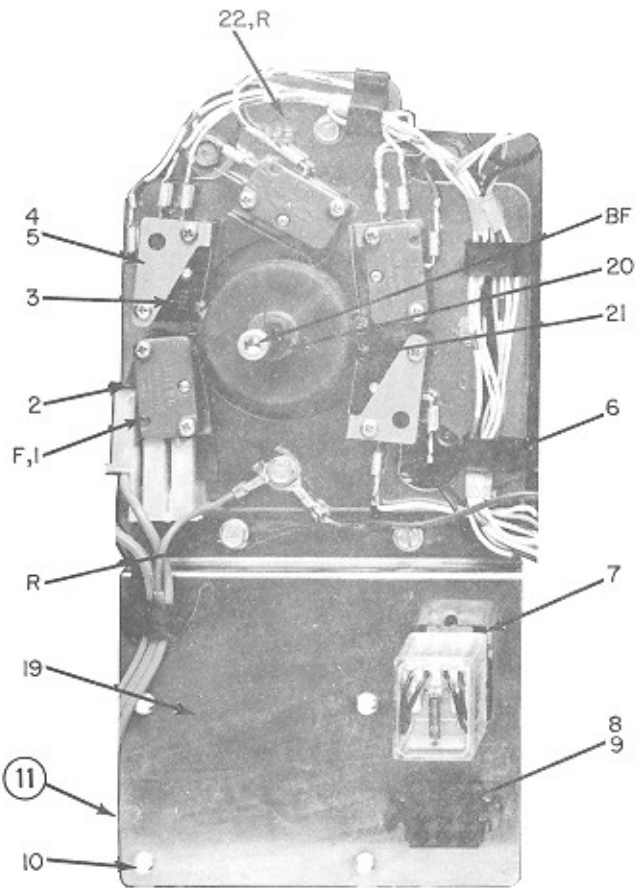
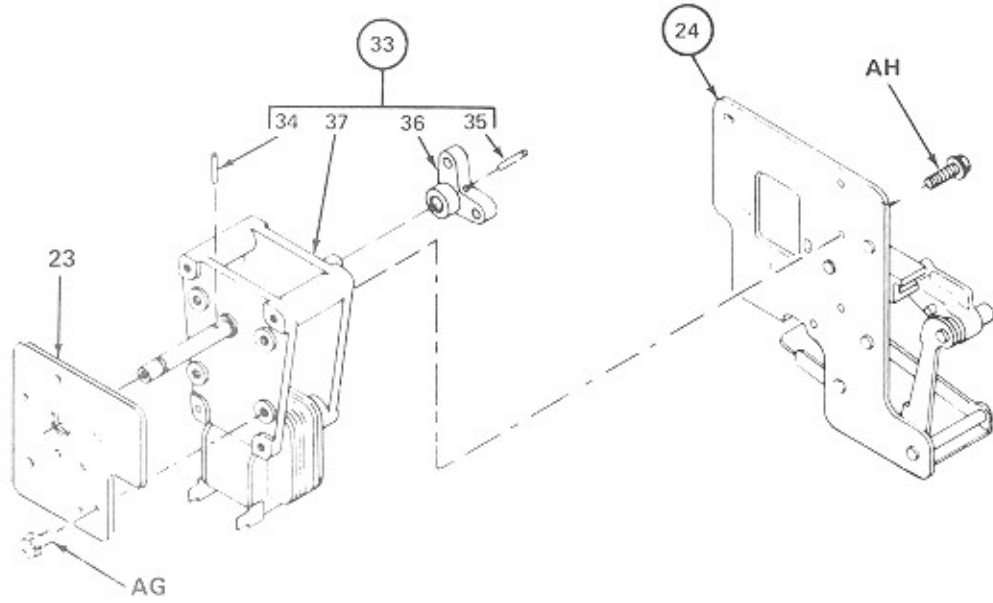


FIG. AND INDEX NO.	ROWE PART NO.	DESCRIPTION	QTY. PER ASSY
12-	401-05075	Cam Switch and Motor Assembly (Figure 8, Item 24)	REF
1	200-10732	Switch	1
2	200-50548	Insulator	1
3	200-10733	Switch	4
4	200-10829	Actuator, Switch	5
5	200-10830	Nut, Twin	5
6	200-07545	Clip	3
	403-05072	Mechanism Harness and Terminal Board Assembly	1
7	202-13782	Socket, Relay	1
	603-03014	Mechanism Harness Assembly	1
8	203-12444	Housing, Socket (9 Circuit) Brown	1
9	207-12444	Housing, Socket (2 Circuit)	1
10	704-05000	Support, Circuit Board	4
11	401-05071	Terminal Board Assembly	1
12	719-00233	Capacitor, Electrolytic, 100MFD, 50V	1
13	702-00350	Diode, Silicon, (D1, D5, D6, D8)	4
14	705-00350	Diode, Silicon, (D2, D4)	2
15	706-00350	Diode, Silicon, (D3, D7)	2
16	725-00105	Resistor, Carbon, 120 OHM, 2W (R1)	1
17	724-00107	Resistor, Carbon, 22 OHM, 1/2W (R2)	1
18	401-05070	Printed Wiring Board	1
19	301-05236	Bracket, Relay Mounting	1
20	704-01430	Ring, Retaining	1
21	300-06636	Cam, Switch	1
22	300-06628	Plate, Switch Mounting	1
23	300-06627	Plate, Motor Mounting	1
24	303-05129	Motor Mounting Plate Assembly	1
25	703-01430	Ring, Retaining	2
26	201-11644	Spring, Tension	1
27	301-05204	Ratchet Pawl Assembly	1
28	200-10835	Spring, Torsion	1
29	201-10834	Actuator Arm Assembly	1
30	200-12075	Spring, Compression	1
31	200-03816	Spring, Tension	1
32	203-10833	Plate and Ratchet Assembly	1
33	201-11598	Motor and Crank Assembly	1
34	706-01131	Pin, Roll	1
35	719-01131	Pin, Roll	1
36	202-10807	Crank and Pin Assembly	1
37	401-05059	Transfer Motor Assembly	1

**FIGURE 13**

# Search Unit and Pinwheel Assembly

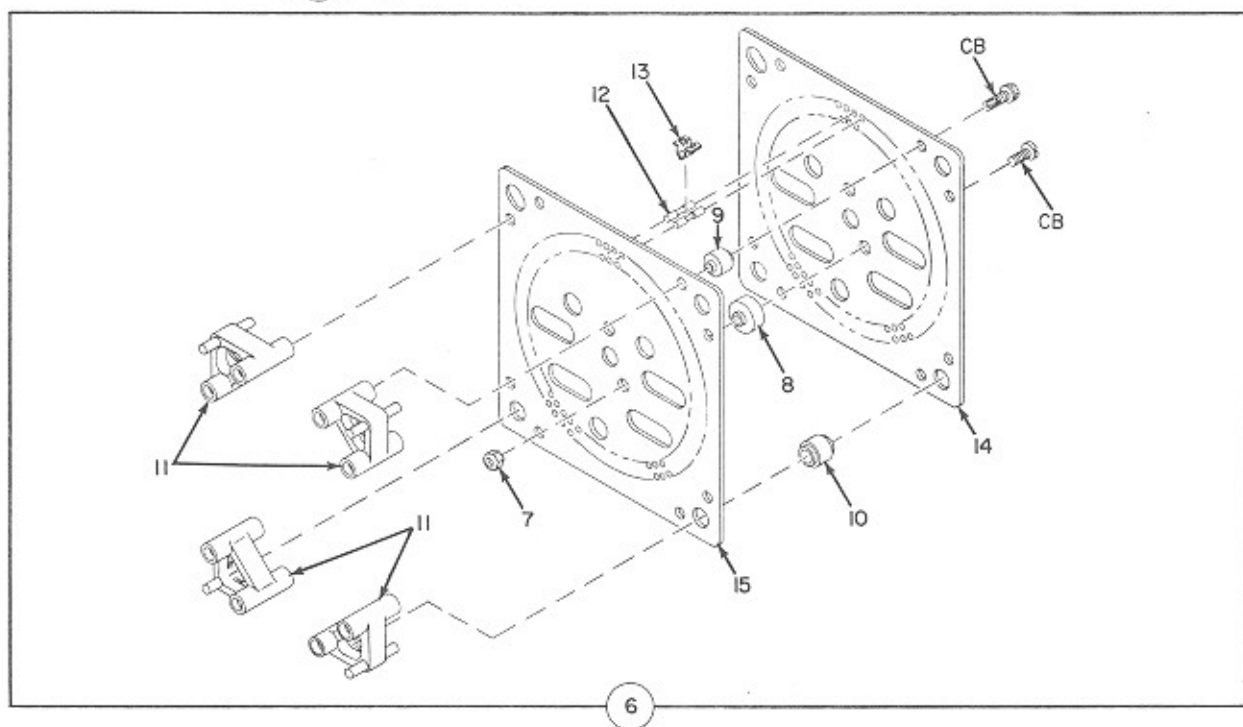
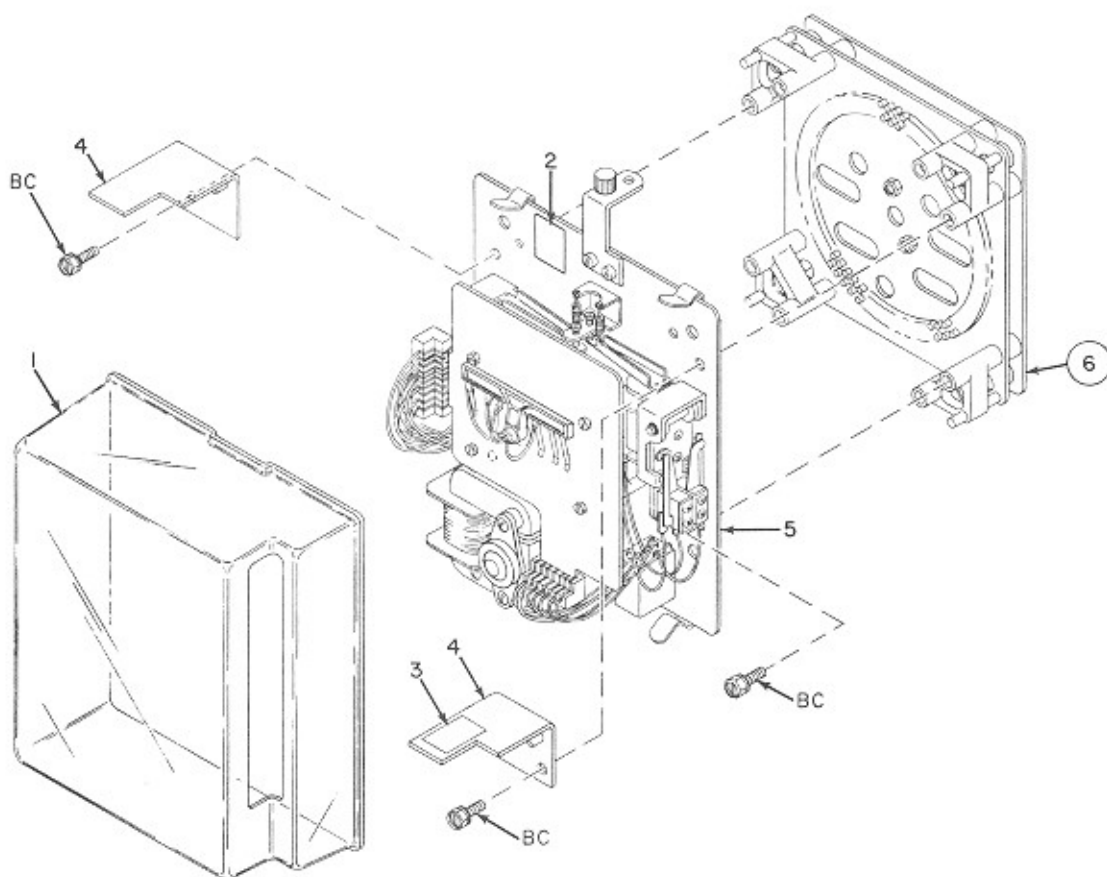


FIG. AND INDEX NO.	ROWE PART NO.	DESCRIPTION	QTY. PER ASSY
13-	406-05012	Search Unit and Pin Wheel Assembly (Figure 8, Item 27)	REF
1	400-05052	Cover, Protective	1
2	701-03032	Label, Serial Number	1
3	200-12665	Label, Caution	1
4	200-11577	Bracket, Locating	2
5	601-04158	Search Unit Assembly (See Figure 14)	1
6	301-05190	Pinwheel Assembly	1
7	706-01301	Nut, Self Locking	2
8	200-10939	Spacer	2
9	708-01215	Spacer	7
10	200-11511	Spacer	3
11	200-10832	Support, Search Unit	4
12	200-10942	Pin, Selector	200
13	200-11072	Spring, Friction	100
14	201-13260	Plate Assembly - Pin Wheel	1
15	301-05157	Plate, Pin Wheel	1

**FIGURE  
14**

# Search Unit Assembly Sheet 1

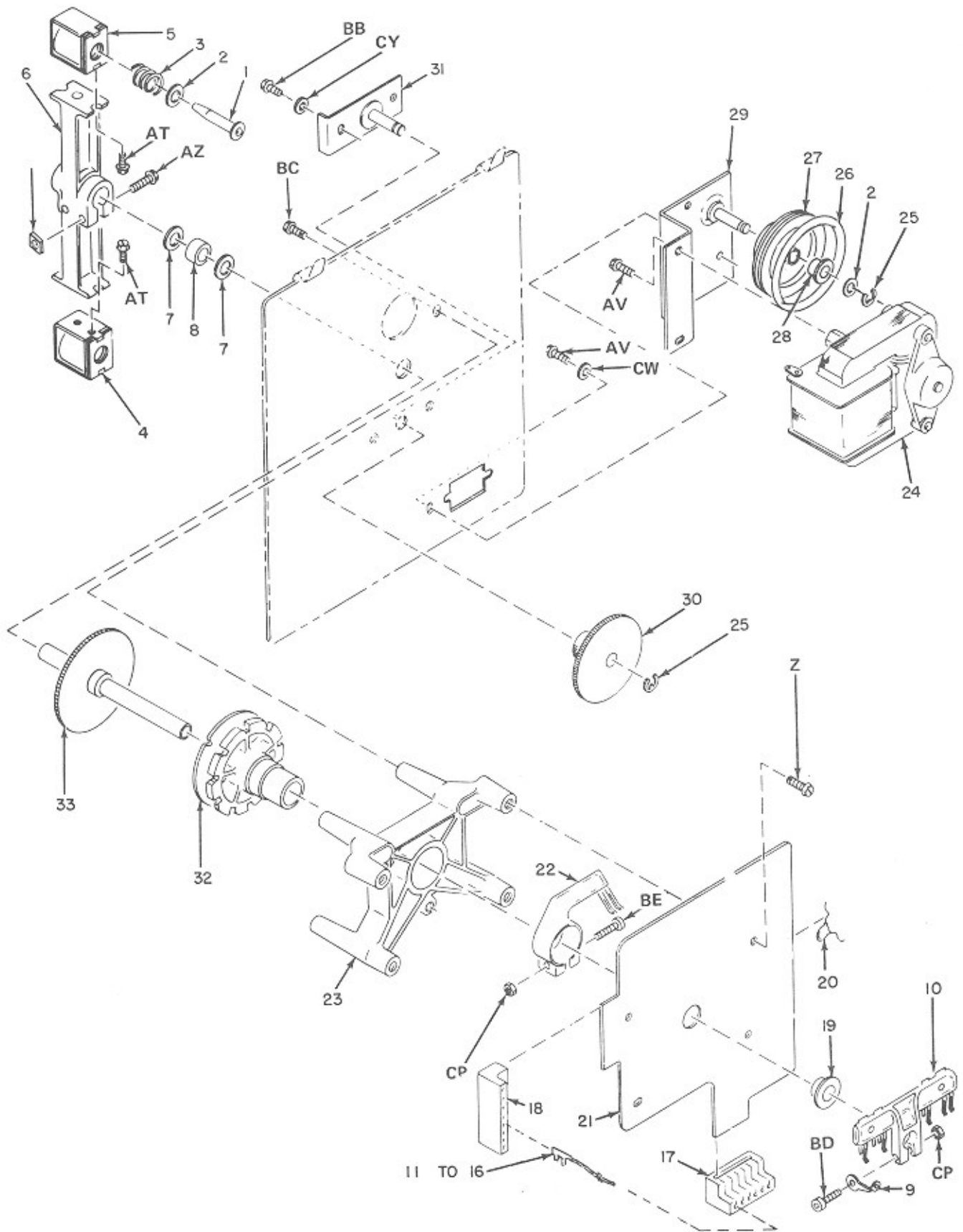


FIG. AND INDEX NO.	ROWE PART NO.	DESCRIPTION	QTY. PER ASSY
14-	601-04158	Search Unit Assembly (Figure 13, Item 5)	REF
1	201-11534	. Plunger Assembly	2
2	712-01207	. Washer, Flat	2
3	200-11533	. Spring, Compression	2
4	204-10743	. Solenoid Assembly	1
5	205-10743	. Solenoid Assembly	1
6	300-05112	. Arm. Solenoid	1
7	725-01205	. Washer, Plain	2
8	720-01214	. Spacer, Sleeve	1
9	200-11583	. Lug, Ground	1
10	301-06371	. Wiper Assembly	1
11	204-11579	. Jumper Assembly	2
12	208-11579	. Jumper Assembly	1
13	210-11579	. Jumper Assembly	1
14	211-11579	. Jumper Assembly	1
15	201-11580	. Jumper Assembly	1
16	202-11580	. Jumper Assembly	1
17	201-11575	. Connector, Edge	1
18	202-11575	. Connector Edge	1
19	201-11573	. Circuit Board and Eyelet Assembly	1
	707-01460	. . Bearing	2
20	706-00223	. . Capacitor, Ceramic Disc, 0.01 MFD, 500V	1
21	400-05048	. . Circuit Board	1
22	301-05599	. Wiper Assembly	1
23	400-05010	. Frame, Mounting	1
24	300-06417	. Motor Assembly	1
25	703-01430	. Ring, Retaining	2
26	200-14265	. Drive Belt, Search Unit	2
27	200-14264	. Gear and Hub	1
28	720-01460	. Bearing	1
29	201-14268	. Bracket and Pin Assembly	1
30	201-11838	. Gear Assembly, Idler	1
31	201-10760	. Pin and Plate Assembly, Idler	1
32	401-05011	. Wheel Assembly, Sprag	1
33	301-05141	. Gear and Shaft Assembly	1

**FIGURE 14**

# Search Unit Assembly Sheet 2

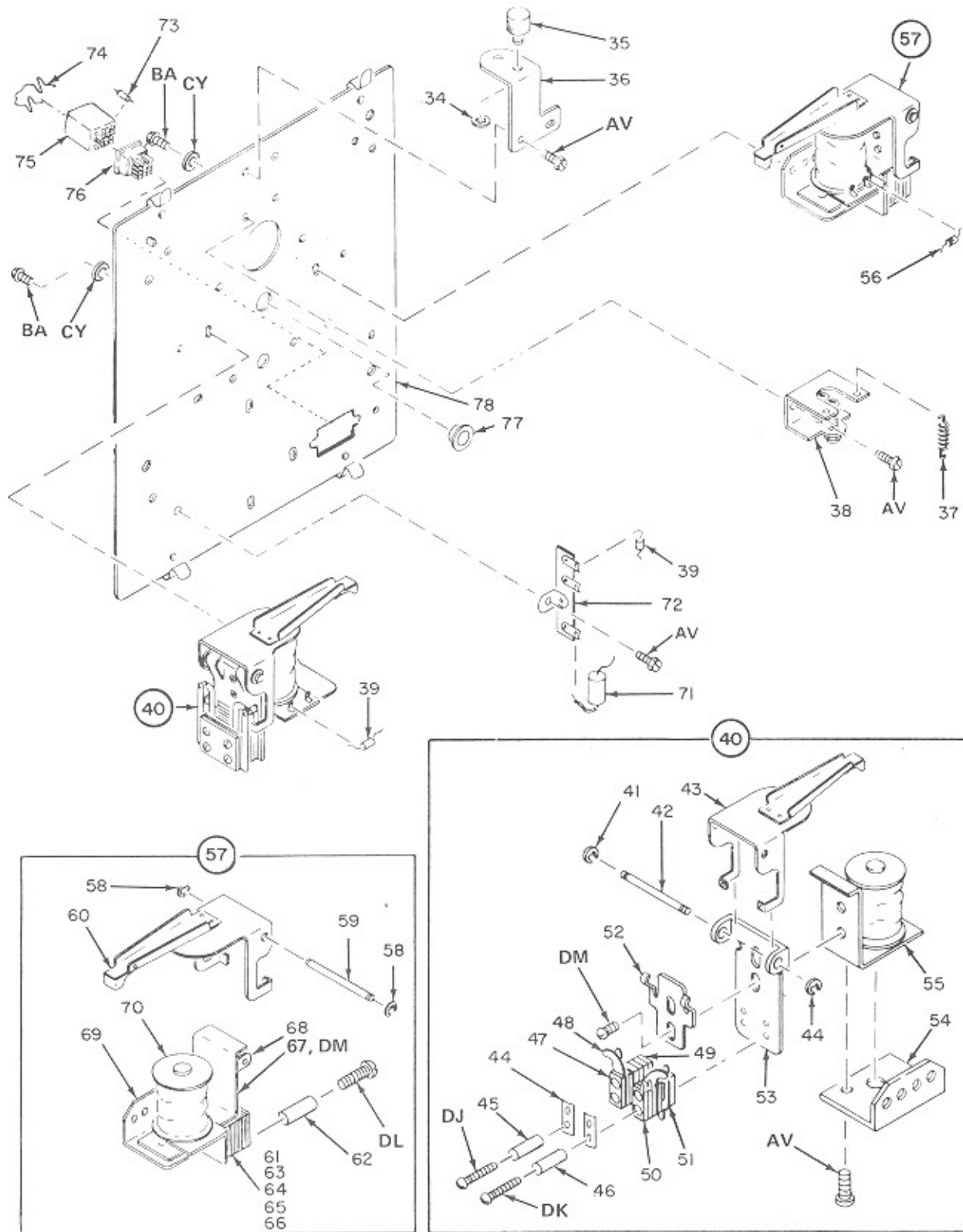




FIG. AND INDEX NO.	ROWE PART NO.	DESCRIPTION	QTY. PER ASSY
14-	601-04158	Search Unit Assembly (Continued)	
34	702-01437	. Clip, Retaining	2
35	200-10897	. Rest, Transfer Arm	1
36	200-10787	. Bracket, Support	1
37	200-10786	. Spring, Tension	2
38	201-10761	. Bracket and Stop Nut Assembly	1
39	702-00350	. Rectifier, Silicon	2
40	308-08050	. Relay Assembly, Sprag	1
41	701-01430	. Ring, Retaining	2
42	200-03598	. Pin, Hinge	1
43	201-10759	. Armature Assembly	1
44	200-06163	. Plate, Clamping	2
45	200-05319	. Tubing, Insulating, 0.384 in. long	2
46	200-05319	. Tubing, Insulating, 0.571 in. long	2
47	200-00547	. Spacer, Contact Blade	20
48	201-09040	. Contact Blade Assembly	4
49	206-09040	. Contact Blade Assembly	1
50	204-09040	. Contact Blade Assembly	1
51	207-09040	. Contact Blade Assembly	1
52	200-03777	. Plate, Clamp-Hinge	1
53	200-03597	. Hinge, Relay	1
54	200-10747	. Bracket, Sprag Relay Mounting	1
55	201-10757	. Frame and Coil Assembly (Sprag)	1
56	702-00350	. Diode, Silicon	1
57	305-08050	. Relay Assembly, Sprag	1
58	701-01430	. Ring, Retaining	2
59	200-03598	. Pin, Hinge	1
60	201-10758	. Armature Assembly	1
61	200-06163	. Plate, Clamping	2
62	200-05319	. Tubing, Insulating, 0.333 in. long	4
63	200-00547	. Spacer, Contact Blade	14
64	206-09040	. Contact Blade Assembly	1
65	201-09040	. Contact Blade Assembly	2
66	207-09040	. Contact Blade Assembly	1
67	200-03777	. Plate, Clamping, Hinge	1
68	200-03597	. Hinge, Relay	1
69	200-10747	. Bracket, Sprag Relay Mounting	1
70	200-06075	. Frame and Coil Assembly	1
71	200-10981	. Capacitor, 5 MFD, 100V	1
72	200-08250	. Strip, Terminal	1
73	706-00104	. Resistor, Carbon, 1.8K, 1/2W (R2)	1
74	200-12869	. Spring, Relay	1
75	200-12751	. Relay	1
76	202-13782	. Socket, Relay	1
	303-05114	. Plate and Bearing Assembly	1
77	200-10766	. Bearing	1
78	400-05051	. Plate and Bearing Assembly	1

# Stop Switch Assembly

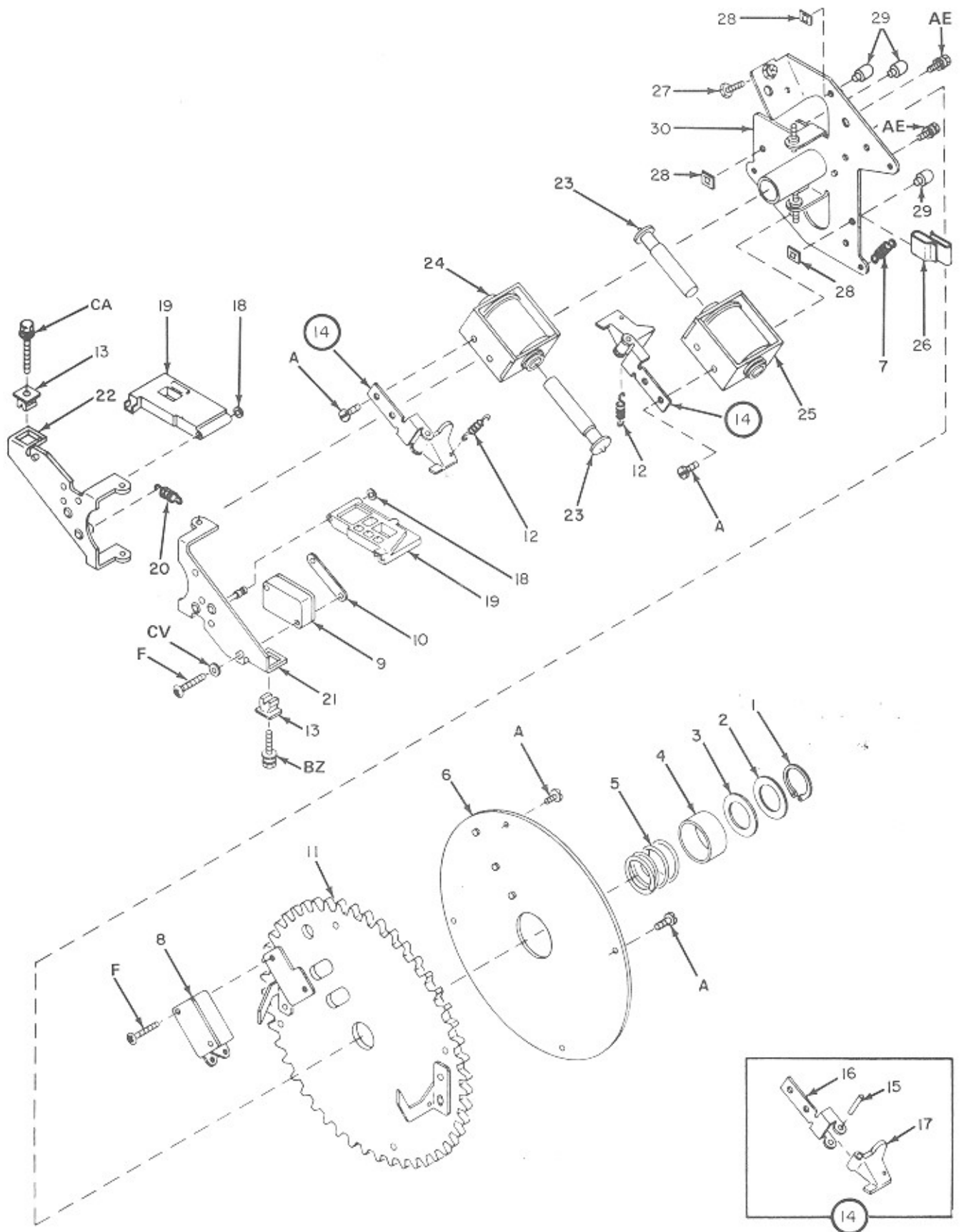


FIG. AND INDEX NO.	ROWE PART NO.	DESCRIPTION	QTY. PER ASSY
15-	401-05024	Stop Switch Assembly (Figure 8, Item 29)	REF
1	708-01432	. Ring, Retaining	1
2	721-01206	. Washer	1
3	720-01206	. Washer	1
4	200-11535	. Sleeve	1
5	200-10953	. Spring, Compression	1
6	201-10934	. Slip Ring Assembly	1
7	200-10954	. Spring, Compression	1
8	201-14968	. Switch, Sensitive	1
9	201-14969	. Switch, Sensitive	1
10	200-10830	. Nut, Plate	1
11	201-10860	. Gear, Selector	1
12	200-03713	. Spring, Tension	2
13	200-10725	. Nut, Snap-In	2
14	201-10926	. Reset Lever Assembly	2
15	706-01130	. Pin, Roll	1
16	200-10929	. Lever	1
17	200-10928	. Bracket	1
18	701-01430	. Ring, Retaining	2
19	401-05028	. Pawl	2
20	200-12695	. Spring, Tension	1
21	201-10924	. Arm, Pivot	1
22	202-10924	. Arm, Pivot	1
23	201-11633	. Plunger & Tip Assembly	2
24	203-10936	. Solenoid Assembly	1
25	202-10936	. Solenoid Assembly	1
26	200-07545	. Clip	1
27	200-03822	. Screw, Adjusting	1
28	200-12402	. Nut, Speed	3
29	200-10921	. Button, Slide	3
30	301-05156	. Switch Plate Assembly	1

**FIGURE  
16**

# Sprag Assembly

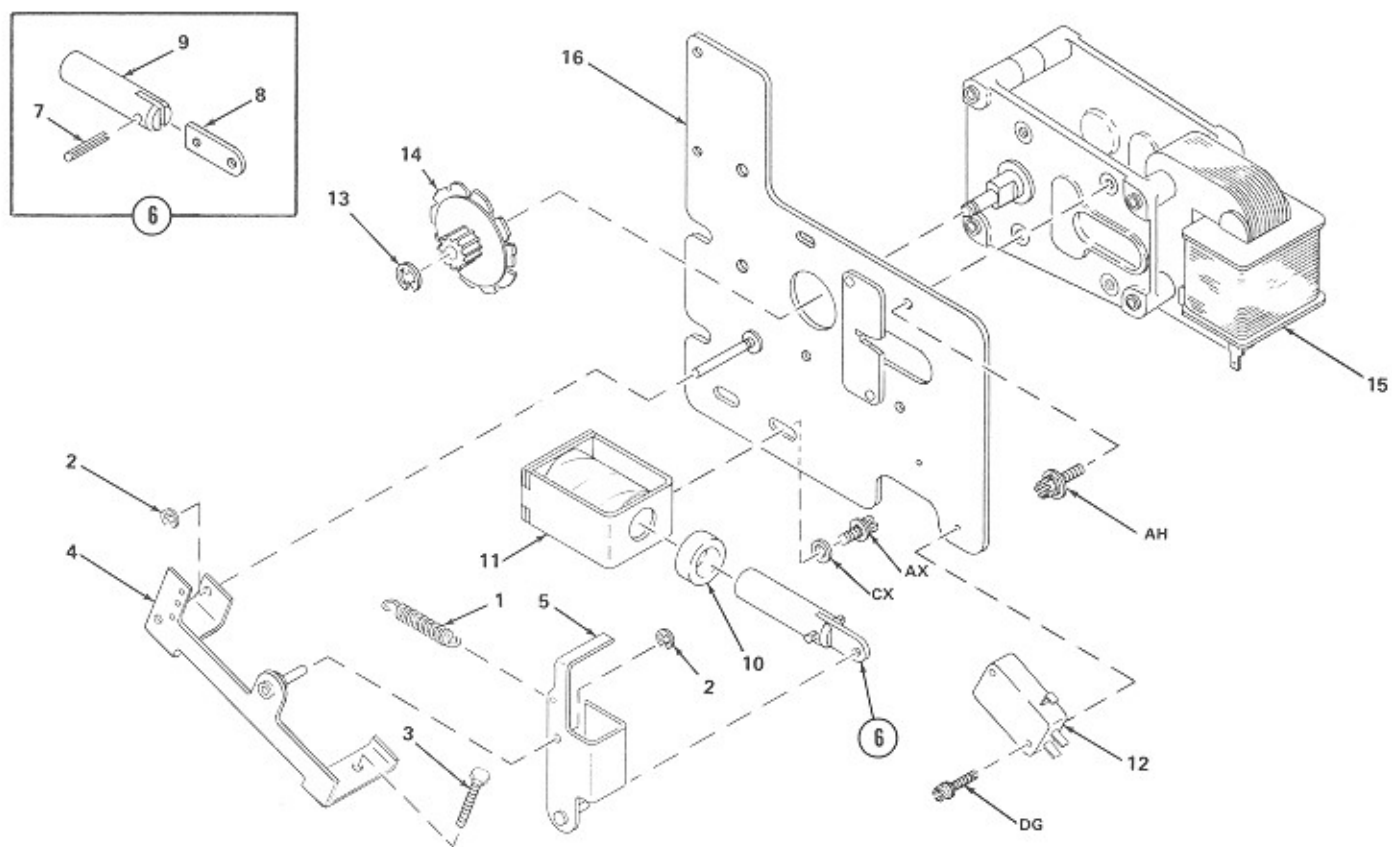


FIG. AND INDEX NO.	ROWE PART NO.	DESCRIPTION	QTY. PER ASSY
16-	403-05022	Sprag Assembly (Figure 8, Item 46)	REF
1	200-10843	. Spring, Tension	1
2	705-01430	. Ring, Retaining	2
3	200-03822	. Screw, Adjusting	1
4	201-10855	. Sprag Link Assembly	1
5	201-10856	. Sprag Lever Assembly	1
6	201-10857	. Plunger Assembly	1
7	703-01130	. Pin, Roll	1
8	200-06226	. Link, Plunger	1
9	200-10848	. Plunger, Solenoid	1
10	200-10849	. Stop, Plunger	1
11	203-11505	. Solenoid Assembly	1
12	200-10731	. Switch	1
13	703-01430	. Ring, Retaining	1
14	300-05133	. Wheel, Sprag	1
15	401-05055	. Magazine Motor Assembly	1
16	301-05135	. Sprag Bracket Assembly	1

# Cable and Annunciator Assembly

FIGURE  
17

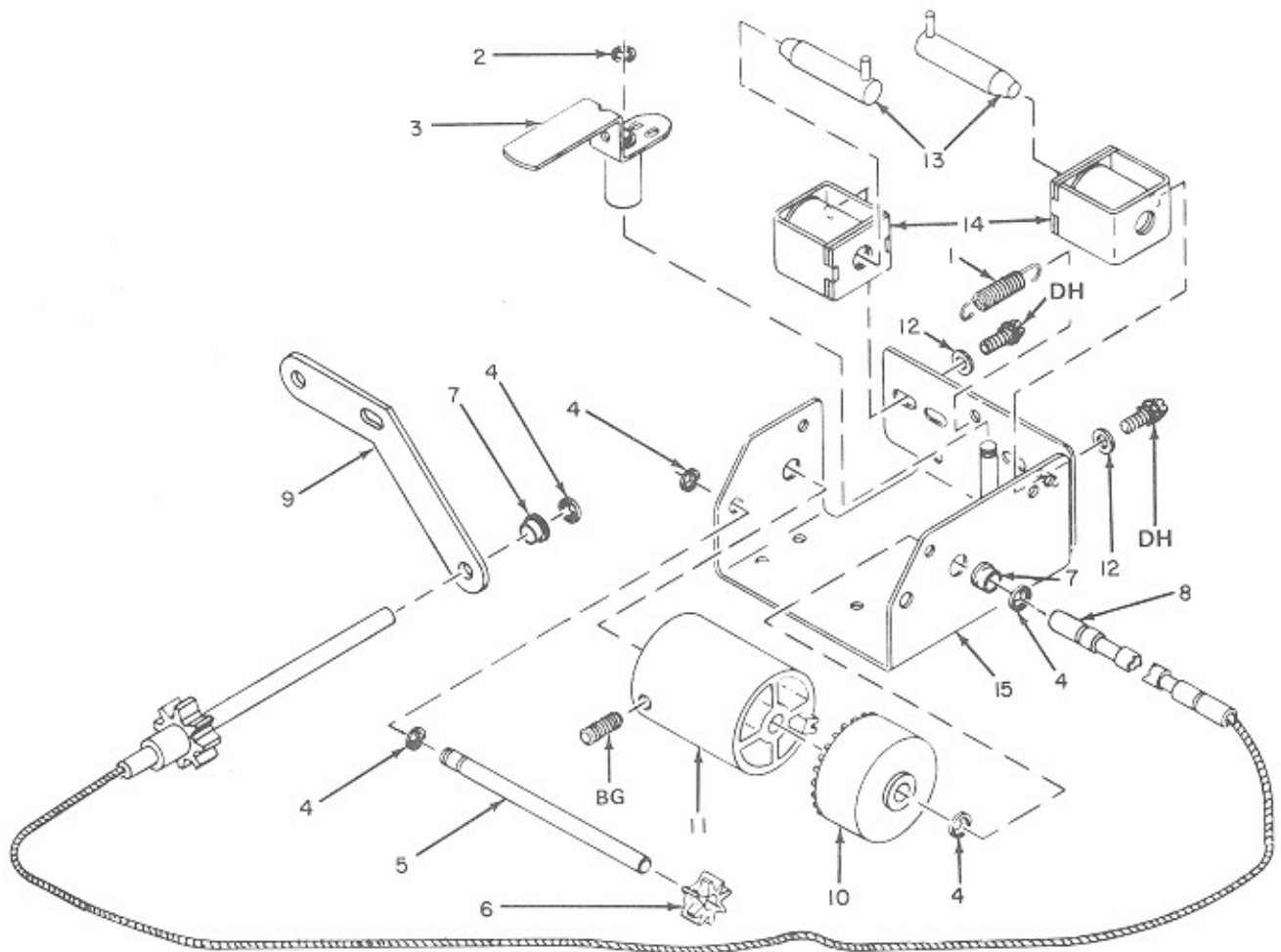


FIG. AND INDEX NO.	ROWE PART NO.	DESCRIPTION	QTY. PER ASSY
17-	301-05241	Cable and Annunciator Assembly (Figure 8, Item 52)	REF
1	200-03816	. Spring	1
2	701-01430	. Ring, Retaining	1
3	201-10994	. Bushing and Shutter Assembly	1
4	703-01430	. Ring, Retaining	5
5	200-10993	. Shaft, Pinion	1
6	200-10978	. Gear, Pinion	1
7	703-01460	. Bearing	3
8	301-06612	. Drive Assembly	1
9	200-10999	. Bracket	1
10	201-11641	. Number Wheel and Strip Assembly	1
11	201-11639	. Letter Wheel Assembly	1
12	711-01206	. Washer, Flat	4
13	201-10998	. Plunger Assembly	2
14	206-10743	. Solenoid Assembly	2
15	202-10984	. Frame Assembly	1

**FIGURE  
18**

# Scan Control Assembly

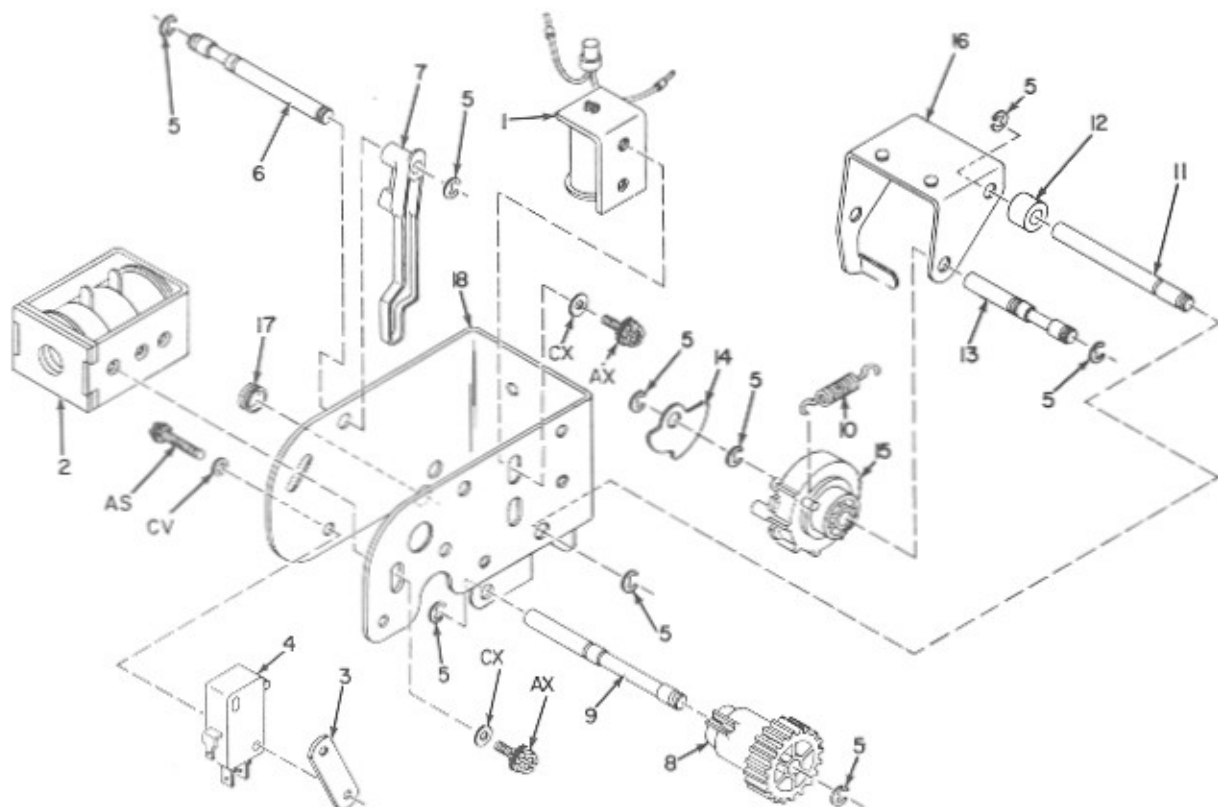


FIG. AND INDEX NO.	ROWE PART NO.	DESCRIPTION	QTY. PER ASSY
18-	303-05111	Scan Control Assembly (Figure 8, Item 59)	REF
1	202-12540	Magnet Assembly, Reset	1
2	201-11505	Solenoid Assembly	1
3	200-10830	Nut, Plate	1
4	200-10731	Switch	1
5	703-01430	Ring, Retaining	10
6	200-10721	Shaft, Switch Lever Pivot	1
7	300-05108	Lever, Switch	1
8	300-05109	Pinion, Scanning Control	1
9	200-10720	Shaft, Pinion	1
10	200-08919	Spring, Tension	1
11	200-08847	Shaft, Pivot	1
12	707-01213	Spacer, Sleeve	1
13	200-08846	Shaft	1
14	200-11529	Weight	1
15	201-10970	Gear Assembly, Scan	1
16	202-08862	Bracket Assembly, Reset	1
17	710-01460	Bearing	1
18	400-05030	Frame	1

# Output Transformer Package Assembly

FIGURE  
19

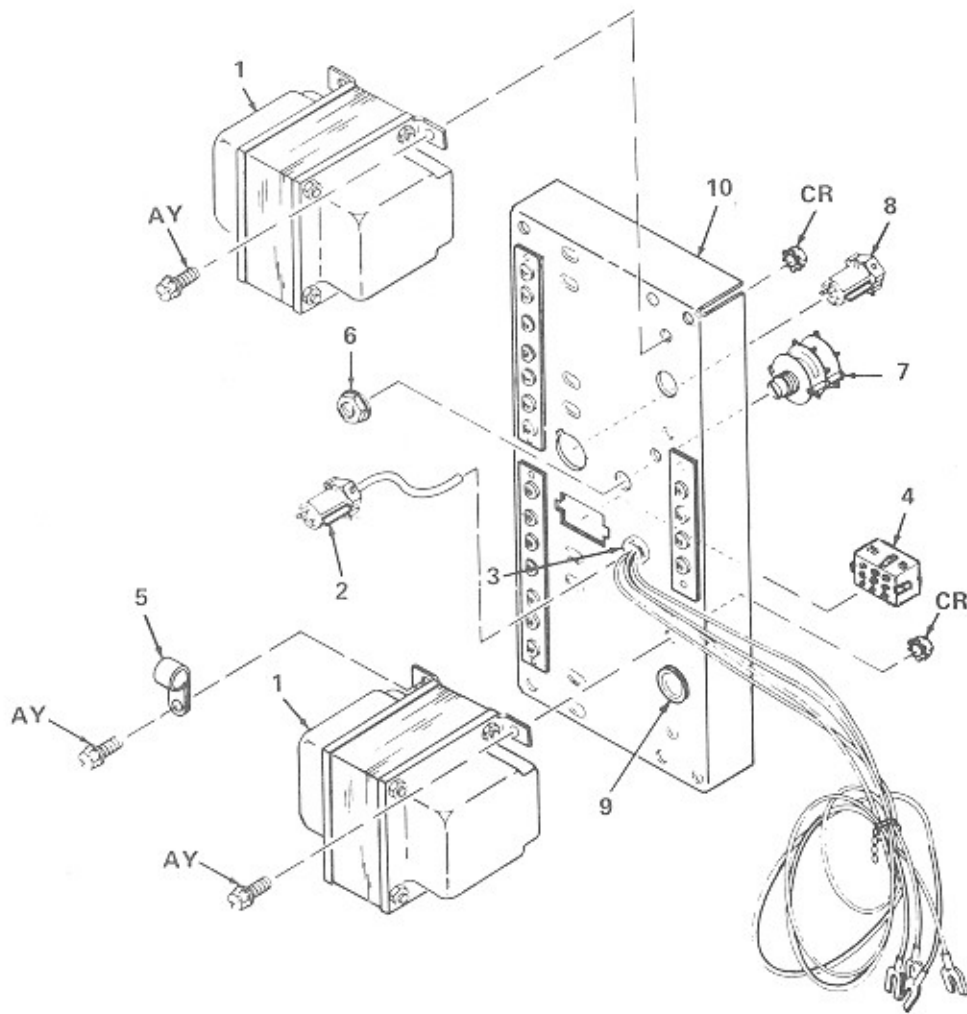


FIG. AND INDEX NO.	ROWE PART NO.	DESCRIPTION	QTY. PER ASS'Y	
			64 WATT	120 WATT
19-	403-06322	Output Transformer Assembly, 64W (Figure 1, Item 57)	REF	
19-	401-06336	Output Transformer Assembly, 120W (Figure, Item 57)		REF
1	401-06522	. Output Transformer	2	
1	401-06335	. Output Transformer		2
	301-06327	. Plug and Cable Assembly	1	1
2	201-13541	. Combo-Line Cap Housing, 7 Circuit	1	1
3	701-02331	. Strain Relief	1	1
	301-07488	. Plug and Cable Assembly	1	1
4	305-07490	. Universal Connector Cap Housing, 9 Circuit	1	1
5	704-00931	. Cable Clamp	1	1
6	200-02649	. Palmnut, 3/8-32	1	1
	301-07487	. Connector and Switch Assembly	1	1
7	201-15278	. Switch, 4 Pole, 6 Position	1	1
8	201-13540	. Combo-Line Plug Housing, 7 Circuit	1	1
9	202-02331	. Strain Relief	2	2
10	404-05776	. Chassis Assembly with Lettering	1	
10	404-06260	. Chassis Assembly with Lettering		1

**FIGURE  
20**

# Junction Box Assembly

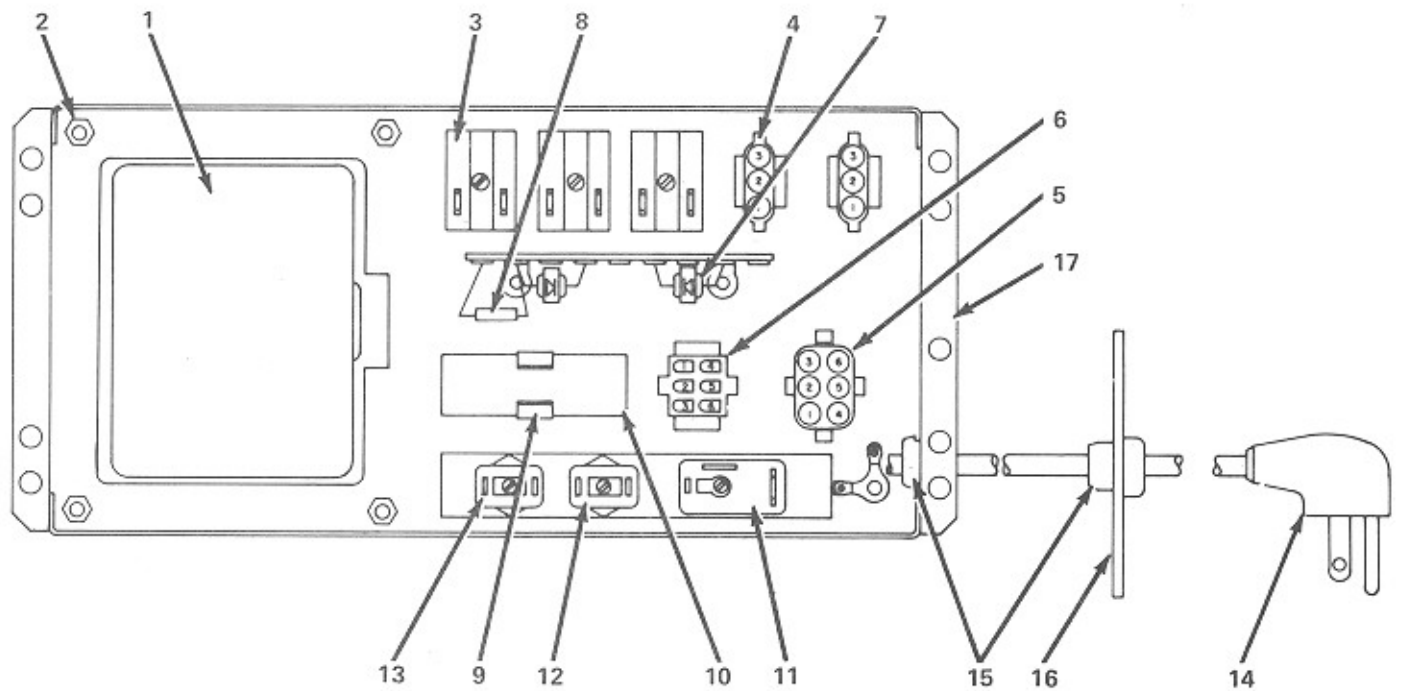


FIG. AND INDEX NO.	ROWE PART NO.	DESCRIPTION	QTY. PER ASSY
20-	401-06703	Junction Box Assembly (Figure 1, Item 61)	REF
1	400-05751	. Transformer	1
2	201-17621	. Nut, Hex, No.8-32	4
3	200-13759	. Outlet Convenience, 3 Wire	3
4	202-17322	. Housing, Socket, 3 Circuit	2
5	203-17322	. Housing, Socket, 6 Circuit	1
6	202-12444	. Housing, Socket, 6 Circuit	1
7	710-00305	. Diode, Silicon, Motorola No. MR 752, 16A, 200V	2
8	708-00104	. Resistor, Carbon, 4.7K, 1/2W	1
9	200-50174	. Clip, Capacitor Mounting	1
10	710-00233	. Capacitor, Electrolytic, 1250 MFD, 50V	1
11	725-00734	. Circuit Breaker 10 Amp	1
12	715-00733	. Circuit Breaker 2 Amp	1
13	717-00733	. Circuit Breaker 3 Amp	1
14	201-11212	. Cord and Plug Assembly	1
15	704-02321	. Relief, Strain	2
16	200-14059	. Cover, Cord Hole	1
17	301-07316	. Junction Box With Lettering	1



# Burglar Alarm Assembly

**FIGURE 21**

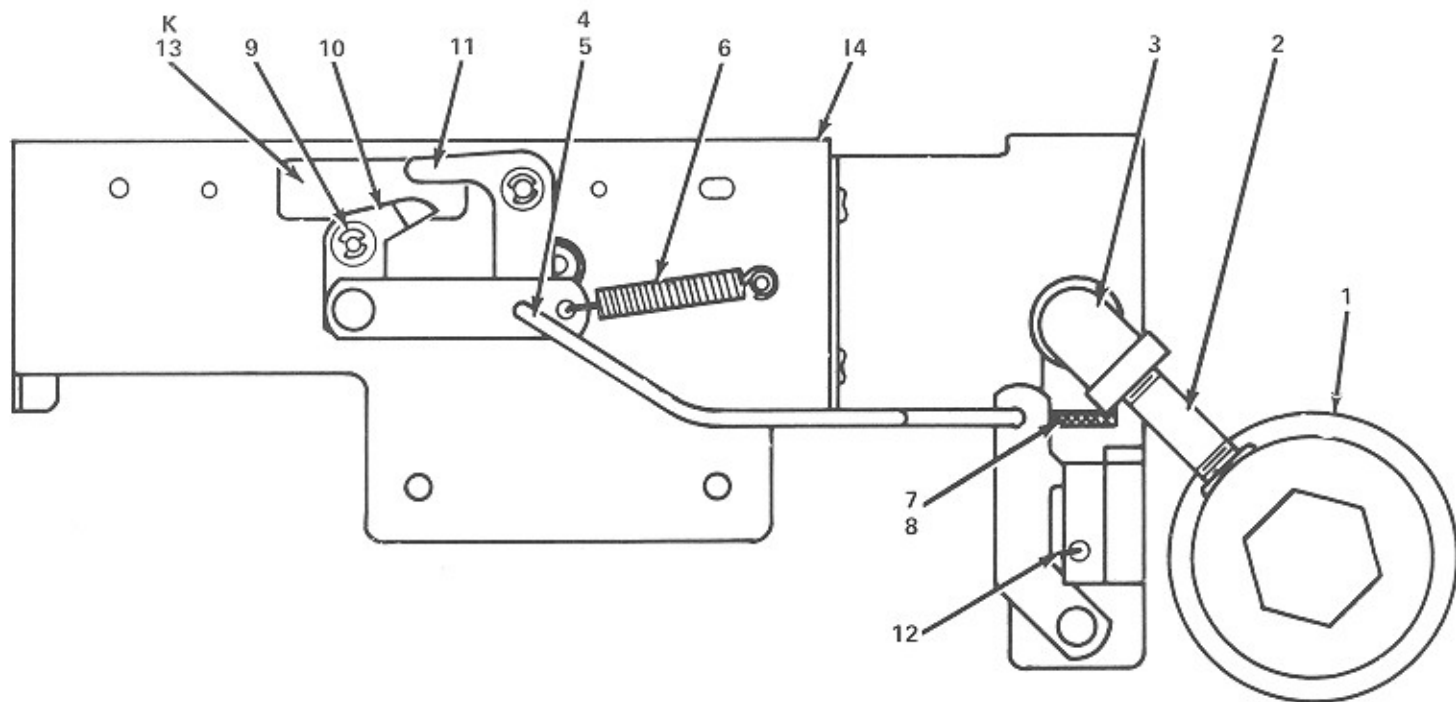


FIG. AND INDEX NO.	ROWE PART NO.	DESCRIPTION	QTY. PER ASSY
21-	604-04450	Burglar Alarm Assembly (Figure 1, Item 73)	REF
1	200-13990	Horn, Alarm	1
2	201-17627	Nipple	1
3	200-14013	Elbow	1
4	701-01437	Ring, Retaining, Triangular	2
5	200-14528	Rod, Actuating	1
6	200-14024	Spring, Handle Return	1
7	712-01301	Palnut, No.9/16-18	1
8	201-14018	Valve and Handle Assembly	1
	722-01101	Pin, Drive, 3/32x5/16	1
	200-14011	Handle, Alarm Valve	1
	200-14000	Valve, Horn	1
9	701-01430	Ring, Retaining	2
10	201-14021	Trigger and Link Assembly	1
11	201-14020	Trigger Assembly	1
12	200-14870	Spring, Lock	1
13	200-14019	Plate, Bolt Stop	1
14	401-06008	Bracket and Latch Assembly	1
	200-13991	Power Pack, Alarm	1

**FIGURE  
22**

## Harness and Console Assembly

FIG. AND INDEX NO.	ROWE PART NO.	DESCRIPTION	QTY. PER ASSY
22-	601-07590	Harness And Console Assembly (Figure 1, Item 83)	REF
	301-07448	. Switch Housing	1
	200-11016	. Switch Knob	1
	200-11009	. 3 Position Switch (Scan Switch)	1
	703-00931	. Cable Clamp	1
	204-13541	. Combo-Line Cap Housing, 7 Circuit (To Mute)	1
	201-13541	. Combo-Line Cap Housing, 7 Circuit (To Amplifier Phono Spkr. Plug)	1
	204-13540	. Combo-Line Plug Housing, 7 Circuit (To Bill Acceptor)	1
	305-07491	. Universal Connector Plug Housing, 9 Circuit (To Ext. Speaker)	1
	306-07491	. Universal Connector Plug Housing, 12 Circuit (To Money Meter)	1
	206-12444	. Mate-N-Lok Socket Housing, 3 Circuit, (To Stepper)	1
	202-12445	. Mate-N-Lok Plug Housing, 6 Circuit (To Junction Box)	1
	203-12445	. Mate-N-Lok Plug Housing, 9 Circuit (To Wallbox Power Supply and to Mechanism)	2
	205-12445	. Mate-N-Lok Plug Housing, 15 Circuit (To Selector)	1
	201-50572	. Edge Connector, 6 Circuit (To Coin Switches)	1
	207-50572	. Edge Connector, 22 Circuit (To Credit Computer)	1
	200-50590	. Lamp Socket (Credit Lamp)	2
	201-15818	. Momentary Contact Pushbutton Switch (Credit Switch)	1
	201-17582	. Credit Switch Mounting Bracket	1
	308-06792	. Access Door Assembly	1
	201-15818	. . Momentary Contact Pushbutton Switch (Cancel Switch)	1

**FIGURE  
23**

## Shell Assembly

FIG. AND INDEX NO.	ROWE PART NO.	DESCRIPTION	QTY. PER ASSY
23-	601-07550	Shell Assembly (Figure 1, Item 109)	REF
	200-09326	. Teenut	6
	200-11006	. Teenut	2
	201-17506	. Tube, Vent	1
	202-17506	. Tube, Vent	1
	203-17506	. Tube, Vent	1
	701-02402	. Screen, Wire Mesh	1
	719-02401	. Screen, Wire Mesh	1
	300-00422	. Cover, Hand Hole	2
	300-06257	. Cover, Hand Hole	2
	401-06001	. Support Bracket Assembly	1
	200-14518	. Spring Lock	1
	401-06340	. Caster and Cup Assembly	4
	401-06489	. Skid Rail	2
	400-06206	. Gusset	1
	400-06207	. Gusset	1
	201-15792	. Cover, Caster	1
	301-07443	. Enclosure, Cash Box, Front	1
	301-07444	. Enclosure, Cash Box, Rear	1

CODE	ROWE PART NO.	
A	80053003	Screw, Mac
B	80053009	Screw, Mac
C	80322310	Screw, Mac
D	80351604	Screw, Mac
E	80351606	Screw, Mac
F	80351610	Screw, Mac
G	80359022	Screw, Mac
H	80413508	Screw, Mac
J	80432304	Screw, Mac
K	80432305	Screw, Mac
L	80433005	Screw, Mac
M	80442304	Screw, Mac
N	80442305	Screw, Mac
P	80442306	Screw, Mac
Q	80443004	Screw, Mac
R	80443005	Screw, Mac
S	80443006	Screw, Mac
T	80443008	Screw, Mac
U	80443010	Screw, Mac
V	80444408	Screw, Mac
W	80542307	Screw, Mac
X	80663008	Screw, Mac
Y	80664404	Screw, Mac
Z	80682304	Screw, Mac
AA	80684432	Screw, Mac
AB	80712304	Screw, Mac
AC	80712305	Screw, Mac
AD	80712306	Screw, Mac
AE	80712308	Screw, Mac
AF	80712310	Screw, Mac
AG	80713004	Screw, Mac
AH	80713005	Screw, Mac
AJ	80713006	Screw, Mac
AK	80713008	Screw, Mac
AL	80713012	Screw, Mac
AM	80713014	Screw, Mac
AN	80713706	Screw, Mac
AP	80714406	Screw, Mac
AQ	80714408	Screw, Mac
AR	80714432	Screw, Mac
AS	80731610	Screw, Mac
AT	80732303	Screw, Mac
AU	80732304	Screw, Mac
AV	80732305	Screw, Mac
AW	80733003	Screw, Mac
AX	80733004	Screw, Mac
AY	80733008	Screw, Mac
AZ	80733014	Screw, Mac
BA	80734404	Screw, Mac
BB	80734406	Screw, Mac
BC	80743708	Screw, Mac
BD	80751610	Screw, Cap
BE	80751614	Screw, Cap
BF	80754408	Screw, Cap

# STANDARD HARDWARE LIST

DESCRIPTION	CODE	ROWE PART NO.	DESCRIPTION
ne, Pan Hd., 8-32 x 3/16	BG	80782703	Screw, Set, Socket Hd., Cup Pt., 6-32 x 3/16
ne, Pan Hd., 8-32 x 9/16	BH	80783603	Screw, Set, Socket Hd., Cup Pt., 8-32 x 3/16
ne, Flat Hd., Phil. SL. 6-32 x 5/8	BJ	80784804	Screw, Set, Socket Hd., Cup Pt., 10-32 x 1/4
ne, Rd. Hd., Phil. SL., 4-40 x 1/4	BK	80786108	Screw, Set, Socket Hd., Cup Pt., 1/4-20 x 1/2
ne, Rd. Hd., Phil. SL., 4-40 x 3/8	BL	82353005	Screw, Self-tapping, Rd. Hd., Phil. SL., Type 23 8-32 x 5/16
ne, Rd. Hd., Phil. SL., 4-40 x 5/8	BM	82662304	Screw, Self-tapping, Hex Wr. Hd., Type 23 6-32 x 1/4
ne, Rd. Hd., Phil. SL., 8-32 x 1-3/8	BN	82662305	Screw, Self-tapping, Hex Wr. Hd., Type 23 6-32 x 5/16
ne, Hd., Phil. SL., 8-32 x 1/2	BP	82662306	Screw, Self-tapping, Hex Wr. Hd., Type 23 6-32 x 3/8
ne, Hex Wr. Hd., Swage Form, 6-32 x 1/4	BQ	82662316	Screw, Self-tapping, Hex Wr. Hd., Type 23 6-32 x 1
ne, Hex, Wr. Hd., Swage Form 6-32 x 5/16	BR	82663004	Screw, Self-tapping, Hex. Wr. Hd., Type 23 8-32 x 1/4
ne, Hex Wr. Hd., Swage Form, 8-32 x 5/16	BS	82663005	Screw, Self-tapping, Hex Wr. Hd., Type 23
ne, Hex Wr. Hds., Swage Form, 6-32 x 1/4	BT	82663006	Screw, Self-tapping, Hex Wr. Hd., Type 23 6-32 x 3/8
ne, Hex Wr. Hd., Swage Form, 6-32 x 5/16	BU	82663008	Screw, Self-tapping, Hex Wr. Hd., Type 23 8-32 x 1/2
ne, Hex Wr. Hd., Swage Form, 6-32 x 3/8	BV	82663010	Screw, Self-tapping, Hex Wr. Hd., Type 23 8-32 x 5/8
ne, Hex Wr. Hd., Swage Form, 8-32 x 1/4	BW	82663016	Screw, Self-tapping, Hex Wr. Hd., Type 23 8-32 x 1
ne, Hex Wr. Hd., Swage Form, 8-32 x 5/16	BX	82664406	Screw, Self-tapping, Hex Wr. Hd., Type 23 10-32 x 3/8
ne, Hex Wr. Hd., Swage Form 8-32 x 3/8	BY	82664408	Screw, Self-tapping, Hex Wr. Hd., Type 23 10-32 x 1/2
ne, Hex Wr. Hd., Swage Form, 8-32 x 1/2	BZ	82682310	Screw, Self-tapping, Hex Wr. Hd., Type 23 6-32 x 5/8
ne, Hex Wr. Hd., Swage Form, 8-32 x 5/8	CA	82682314	Screw, Self-tapping, Hex Wr. Hd., Type 23 6-32 x 7/8
ne, Hex Wr. Hd., Swage Form, 10-32 x 1/2	CB	82684412	Screw, Self-tapping, Hex Wr. Hd., Type 23 10-32 x 3/4
ne, Rd. Hd., Phil. SL., Sems, 6-32 x 7/16	CC	83663010	Screw, Self-tapping, Hex Wr. Hd., Type 25 8-32 x 5/8
ne, Hex Wr. Hd., 8-32 x 1/2	CD	86323620	Screw, Self-tapping, Flat Hd., Phil. SL., Type 17 8 x 1-1/4
ne, Hex Wr. Hd., 10-32 x 1/4	CE	86323624	Screw, Self-tapping, Flat Hd., Phil. SL., Type 17 8 x 1-1/2
ne, Hex Wr. Hd., 6-32 x 1/4	CF	86332305	Screw, Self-tapping, Oval Hd., Phil. SL., Type 17 6 x 5/16
ne, Hex Wr. Hd., 10-32 x 2	CG	86332312	Screw, Self-tapping, Oval Hd., Phil. SL., Type 17 6 x 3/4
ne, Hex Wr. Hd., Sems 6-32 x 1/4	CH	86662708	Screw, Self-tapping, Hex Wr. Hd., Type 17 6 x 1/2
ne, Hex Wr. Hd., Sems 6-32 x 5/16	CJ	86663610	Screw, Self-tapping, Hex Wr. Hd., Type 17 8 x 5/8
ne, Hex Wr. Hd., Sems 6-32 x 3/8	CK	86663612	Screw, Self-tapping, Hex Wr. Hd., Type 17 8 x 3/4
ne, Hex Wr. Hd., Sems 6-32 x 1/2	CL	86663616	Screw, Self-tapping, Hex Wr. Hd., Type 17 8 x 1
ne, Hex Wr. Hd., Sems 6-32 x 5/8	CM	87831600	Nut, Hex, 4-40
ne, Hex Wr. Hd., Sems 8-32 x 1/4	CN	87833000	Nut, Hex, 8-32
ne, Hex Wr. Hd., Sems 8-32 x 5/16	CP	87841600	Nut, Hex, Keps, 4-40
ne, Hex Wr. Hd., Sems 8-32 x 3/8	CQ	87842300	Nut, Hex, Keps, 6-32
ne, Hex Wr. Hd., Sems 8-32 x 1/2	CR	87843000	Nut, Hex, Keps, 8-32
ne, Hex Wr. Hd., Sems 8-32 x 3/4	CS	87844400	Nut, Hex, Keps, 10-32
ne, Hex Wr. Hd., Sems 8-32 x 7/8	CT	87845700	Nut, Hex, Keps, 1/4 x 20
ne, Hex Wr. Hd., Sems 10-24 x 3/8	CU	87853000	Nut, Square 8-32
ne, Hex. Wr. Hd., Sems 10-32 x 3/8	CV	88931600	Washer, Flat 4
ne, Hex Wr. Hd., Sems 10-32 x 1/2	CW	88932300	Washer, Flat 6
ne, Hex Wr. Hd., Sems 10-32 x 2	CX	88933000	Washer, Flat 8
ne, Hex Wr. Hd., Sems 4-40 x 5/8	CY	88934400	Washer, Flat, 10
ne, Hex Wr. Hd., Sems 6-32 x 3/16	CZ	80374406	Screw, Machine, Truss Hd., Phil. SL., 10-32 x 3/8
ne, Hex Wr. Hd., Sems 6-32 x 1/4	DA	80433008	Screw, Machine, Hex Wr. Hd., Swage Form 8-32 x 1/2
ne, Hex Wr. Hd., Sems 6-32 x 5/16	DB	80433020	Screw, Machine, Hex Wr. Hd., Swage Form 8-32 x 1-1/4
ne, Hex Wr. Hd., Sems 8-32 x 3/16	DC	80500508	Screw, Machine, Round Hd., Phil. SL., Sems 2-56 x 1/2
ne, Hex Wr. Hd., Sems 8-32 x 1/4	DD	82681604	Screw, Self-tapping, Hex Wr. Hd., Type 23 4-40 x 1/4
ne, Hex Wr. Hd., Sems 8-32 x 1/2	DE	82682304	Screw, Self-tapping, Hex Wr. Hd., Type 23 6-32 x 1/4
ne, Hex Wr. Hd., Sems 8-32 x 7/8	DF	80311608	Screw, Machine, Fillister Hd., Phil. SL., 4-40 x 1/2
ne, Hex Wr. Hd., Sems 10-32 x 1/4	DG	80501610	Screw, Machine, Round Hd., Phil. SL., Sems, 4-40 x 5/8
ne, Hex Wr. Hd., Sems 10-32 x 3/8	DH	80712303	Screw, Machine, Hex Wr. Hd., Sems 6-32 x 3/16
ne, Hex Wr. Hd., Sems Swage Form 10-24 x 1/2	DJ	80350909	Screw, Machine, Rd. Hd., Phil. SL., 3-48 x 9/16
ocket Hd., Cup Pt., 4-40 x 5/8	DK	80350912	Screw, Machine, Rd. Hd., Phil. SL., 3-48 x 3/4
ocket Hd., Cup Pt., 4-40 x 7/8	DL	80350924	Screw, Machine, Rd. Hd., Phil. SL., 3-48 x 1-1/2
ocket Hd., Cup Pt., 10-32 x 1/2	DM	80541604	Screw, Machine, Rd. Hd., Phil. SL. 4-40 x 1/4