

# SECTION 6-PARTS CATALOG

	PAGE
INTRODUCTION	75
DESCRIPTION	75
ORDERING REPLACEMENT PARTS	75
PARTS BREAKDOWN	75

1	Phonograph Final Assembly, Model R-85	76
2	Door Assembly (Starwood, Starburst)	88
3	Door Assembly (Starlight)	90
4	Selector and Grille Assembly	92
5	Lamp Control Assembly	94
6	Shell Assembly	95
7	Stereo Amplifier System Assembly	96
8	Heat Sink Assembly	98
9	Output Transformer Assembly	100
10	Central Control Computer	102
11	Main Power Supply	104
12	Mechanism Assembly	106
13	Tone Arm and Pivot Assembly	114
14	Sprag Assembly	116
15	Cam Switch and Motor Assembly	118

## INTRODUCTION

This parts catalog lists procurable replacement parts for the phonograph.

The purpose of this parts catalog is to locate and identify replaceable components and to supply ordering information.

## DESCRIPTION

The parts catalog is divided into 15 major assemblies called "FIGURES" corresponding to the illustrations used. In some instances major assemblies require more than one illustration to identify the procurable parts. In this case sheet numbers are assigned to the figure.

Parts of riveted or welded units are not listed since repair of these parts is normally impractical in the field, however, these parts are available as assemblies.

To be sure that this parts catalog contained the latest information, last minute revisions were made. In these instances the additions were added in sequence with a letter added to the identification numbers both in the parts list and corresponding illustrations. That is IA, IB, IC, etc.

The Parts List contains four columns:

**Fig and Index No.** - The first entry in this column lists the figure number of the corresponding illustration. An index number when listed corresponds to the index number appearing on the illustration. Index numbers are not used when:

- Items are listed for reference purposes only.
- The item listed is an alternate part.

**Rowe Part No.** - This column lists the part number of the item which should be specified for ordering purposes.

**Description** - This column contains a brief word description of the assembly or part. Each item is indented to show its proper relationship to the unit of which it is a part or to its next higher assembly.

**Qty. Per Assy.** - This column contains the quantity of the part used in the assembly. When a figure covers more than one model of an assembly, the "Qty. Per Assy." column is divided to show each model.

## ORDERING REPLACEMENT PARTS

All replacement parts must be ordered directly from an authorized ROWE Distributor.

Once the replacement item is determined, complete a standard parts order form available from your ROWE distributor at no charge. Very often parts orders are delayed because of inadequate or incomplete information. To insure prompt parts delivery always specify the following information.

- Part Number and Description. State color if applicable.
- Quantity required.
- Model and Serial Number of machine for which the repair part is needed.
- Complete shipping address including ZIP code.
- Shipping Instructions must be specified. If the shipping method selected is Parcel Post, Air Parcel Post, United Parcel Service or Air UPS, indicate an alternate shipping method if there is a possibility the packages may exceed the size and weight limits established by these services. If you would like ROWE to select the best way to ship your parts order, specify "BEST WAY". If fastest delivery is the requirement, specify "FASTEST WAY". ROWE will select the carrier for those orders which justify shipment by truck.

# R-85 Phonograph Final Assembly Sheet 1

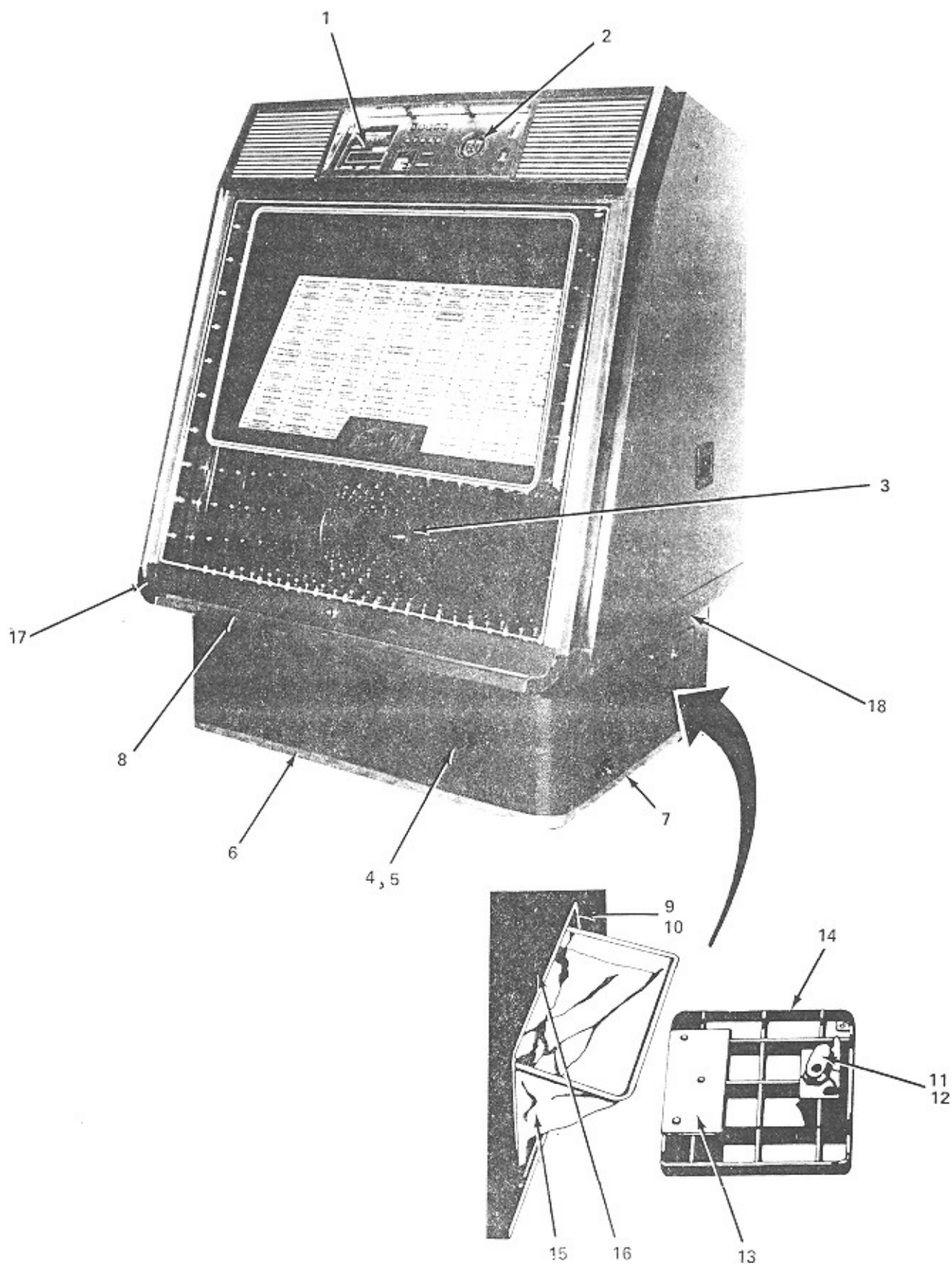


FIG. AND INDEX NO.	ROWE PART NO.	DESCRIPTION	QTY. PER ASSY
1-	6-09200-01	R-85 Phonograph Final Assembly (Starwood)	
1-	6-09200-02	R-85 Phonograph Final Assembly (Starlight)	
1-	6-09200-03	R-85 Phonograph Final Assembly (Starburst)	
	2-18333-04	. Pricing Accessories Bag (Not Shown)	1
	2-17305-12	. Accessories Bag Containing: (Not Shown)	1
	2-11988-01	. . Accessories Bag	1
	7-00926-10	. . Contact (Pin)	1
	7-00926-11	. . Contact (Socket)	3
	7-00975-01	. . Contact (Pin)	3
	7-00975-02	. . Contact (Socket)	6
	7-00756-01	. . Contact (Post)	6
	7-00910-12	. . Terminal Lug	10
	7-00720-18	. . Fuse (5 Amp)	10
	7-00721-22	. . Fuse (3 Amp)	2
1	3-08385-03	. Price Card	1
	6-07681-04	. Universal Price Selection Card (Not Shown)	1
2	2-18214-02	. Bill Acceptor Blockout Assy. (Covers Opening When No B.A. Is Used)	1
3	6-09271-01	. Door Assembly (Starwood)(See Figure 2)	1
	6-09271-02	. Door Assembly (Starlight)(See Figure 3)	1
	6-09271-03	. Door Assembly (Starburst)(See Figure 2)	1
4	4-07360-02	. Lower Grille	1
5	2-17820-02	. Bottom Grille Foam Pad	1
	2-17806-03	. Acoustical Pad (Not Shown - Mounted Behind Lower Grille)	1
6	4-07350-01	. Front Base Trim	1
7	3-07825-01	. Side Base Trim	2
8	6-09277-01	. Lower Front Trim	1
9	4-05276-05	. Cash Box Door Frame	1
10	2-17760-05	. "U" Type Speed Clip	1
	2-11866-05	. Cash Box Door Assembly	1
11	7-01600-16	. . Cylinder Lock	1
12	2-06695-01	. . Lock Support	1
13	2-07703-01	. . Catch Bracket	1
14	6-03267-05	. . Cash Box Door (Starlight & Starburst)	1
15	3-07026-01	. Cash Bag	1
16	4-06495-03	. Cash Bag Support (Inside Cabinet)	1
17	4-07354-01	. Lower Corner Trim (LH)	1
	4-07355-01	. Lower Corner Trim (RH)	1
18	6-09259-02	. Rocker Panel Assembly (LH) (Starlight & Starburst)	1
	6-09259-01	. Rocker Panel Assembly (LH) (Starwood)	1
	6-09260-02	. Rocker Panel Assembly (RH) (Starlight & Starburst)	1
	6-09250-01	. Rocker Panel Assembly (Starwood)	1

Note: R-85 (Wood) = Starwood  
 (Disco) = Starlight  
 (Jukebox) = Starburst

# R-85 Phonograph Final Assembly Sheet 2

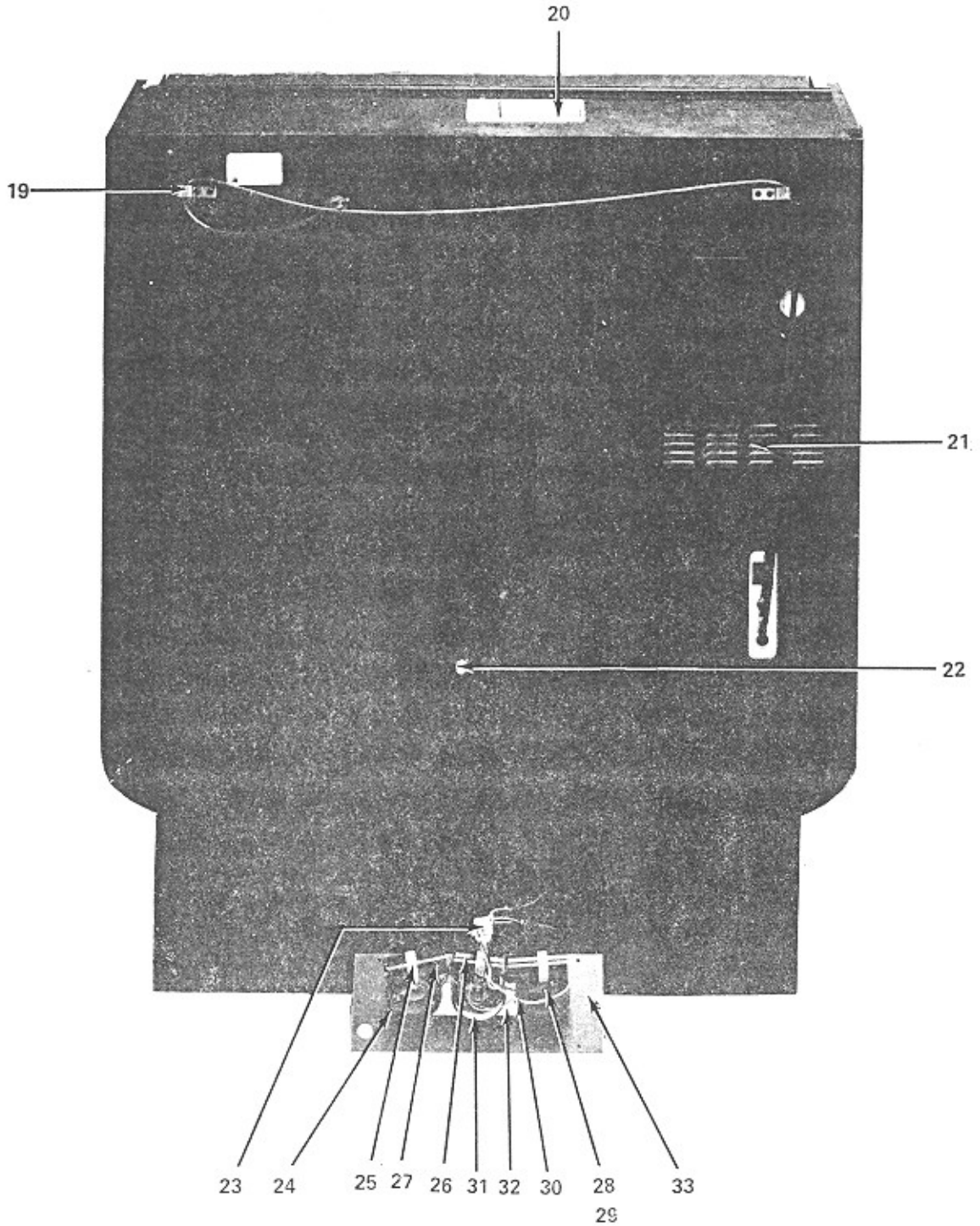


FIG. AND INDEX NO.	ROWE PART NO.	DESCRIPTION	QTY. PER ASSY
1-	6-09200-01	R-85 Phonograph Final Assembly (Starwood)(Continued)	
1-	6-09200-02	R-85 Phonograph Final Assembly (Starlight)(Continued)	
1-	6-09200-03	R-85 Phonograph Final Assembly (Starburst)(Continued)	
19	2-08795-01	. Retainer Bracket (Mounted on Rear of Phonograph)	2
20	4-06494-01	. License Holder	1
21	3-07826-01	. Louver	1
22	2-12652-03	. Tie Down Plate Assembly	1
	4-07160-03	. Speaker Network Assembly	1
23	3-07491-05	. . Plug Housing (9 Ckt.)	1
	7-00975-01	. . Contact	9
24	3-04225-14	. . Terminal Strip	3
25	7-00931-12	. . Cable Clamp	3
26	3-07722-07	. . 43/53 MFD Electrolytic Capacitor, 50 V (G.E. Type 35F: Sprague Type 9A)	1
27	3-07722-02	. . 17/21 MFD Electrolytic Capacitor, 50 V (G.E. Type 35F: Sprague Type 9A)	2
28	7-01211-10	. . Spacer	3
	7-08001-07	. . Cable Tie	2
29	7-01200-04	. . Flat Washer	3
30	2-10586-01	. . 7 mH Inductor	2
31	2-10641-01	. . 8 mH Inductor	1
32	2-18003-01	. . Spacer Block - Crossover	1
33	3-07877-01	. . Network Panel	1

# R-85 Phonograph Final Assembly Sheet 3

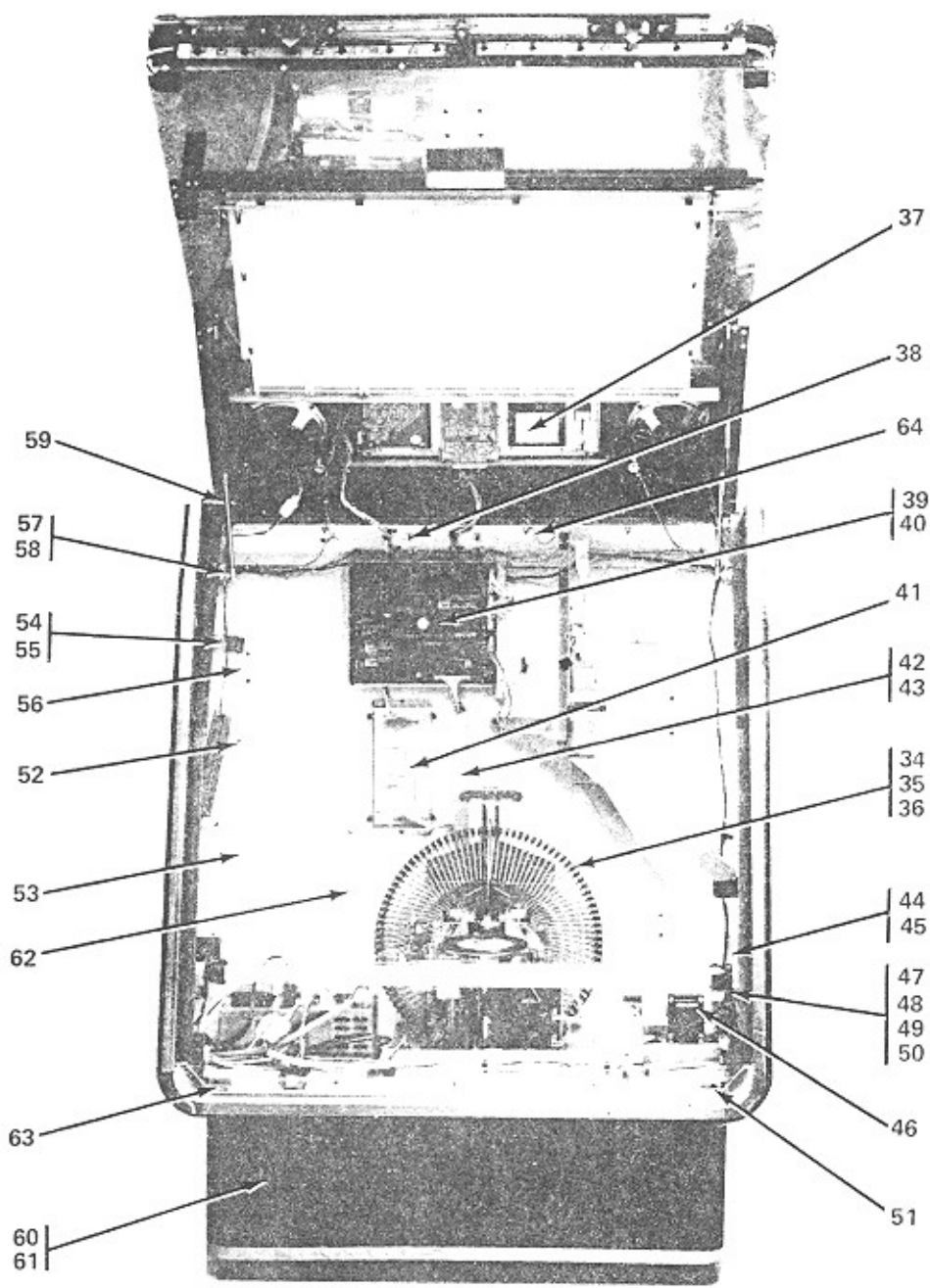


FIG. AND INDEX NO.	ROWE PART NO.	DESCRIPTION	QTY. PER ASSY
1-	6-09200-01	R-85 Phonograph Final Assembly (Starwood)(Continued)	
1-	6-09200-02	R-85 Phonograph Final Assembly (Starlight)(Continued)	
1-	6-09200-03	R-85 Phonograph Final Assembly (Starburst)(Continued)	
34	6-08700-01	. Mechanism Assembly (See Figure 12)	1
35	2-11537-01	. Lower Spring Support	4
36	2-12036-01	. Mech Tie Down Bolt	2
37	2-18200-01	. Blockout Retainer	1
38	2-15790-01	. Wing Nut	4
39	6-08870-04	. Central Control Computer (See Figure 10)	1
40	2-18258-01	. Central Control Computer Support Bracket	2
41	4-07380-02	. Pricing Assembly	1
	6-08878-04	. . Circuit Board Assembly (See Schematic for P.L.)	1
	4-07392-01	. . Pricing Board Mounting Plate Assembly	1
	4-07393-01	. . Pricing Board Cover	1
	7-01216-16	. . Spacer	2
	3-08386-01	. . Insulator	1
42	3-07058-03	. Harness Channel	1
43	2-15789-04	. Harness Cover	1
44	7-00601-12	. Fluorescent Lamp, 36 inches, 30 W. Type T-8	2
45	2-17982-01	. Fluorescent Lamp Sleeve	1
	4-07384-03	. Lower Light Harness Assembly	1
	4-07384-04	. Lower Light Harness Assembly (Canada)	1
	3-07490-02	. . Cap Housing (3 Ckt.)	1
	7-00975-03	. . Contact	3
46	2-15693-01	. . Ballast, 30W (Univ. Mfg. Co. 393B; Robertson Transformer Co. S-30-5/6P)	1
	2-15693-02	. . Ballast (Canada)	1
	7-00921-07	. . Solderless Connector	2
	7-00921-14	. . Solderless Connector	5
47	2-00295-01	. . Starter Socket	1
48	2-18267-08	. . Fluorescent Lampholder (RH)	1
	2-18267-09	. . Fluorescent Lampholder (LH)	1
49	2-18212-03	. . Lamp Bracket	2
	7-08001-01	. . Wire Tie	12
	7-00916-02	. . Terminal Lug	3
50	7-00800-04	. Fluorescent Starter, FS-4	2
51	2-18263-01	. Corner Pad	2
52	4-07381-02	. Amplifier Cover Assembly	1
53	3-08378-02	. Amplifier Panel	1
54	2-17518-01	. Spring Catch	1
55	2-18235-01	. Spring Catch Mounting Bracket	1
56	2-17593-01	. Cord Hole Cover	2
57	3-08377-01	. Pivot Bracket	2
58	2-17976-01	. Ball Stud	2
59	4-07149-02	. Pneumatic Spring	2
60	4-07374-01	. Low Frequency Speaker (Behind Grille)	2
61	2-17807-01	. Speaker Retaining Bracket	8
62	4-07377-02	. Enclosure Panel Assembly	1
63	7-02210-01	. Foamed Pad	2
64	2-51422-22	. Jumper Assembly	1



# R-85 Phonograph Final Assembly Sheet 4

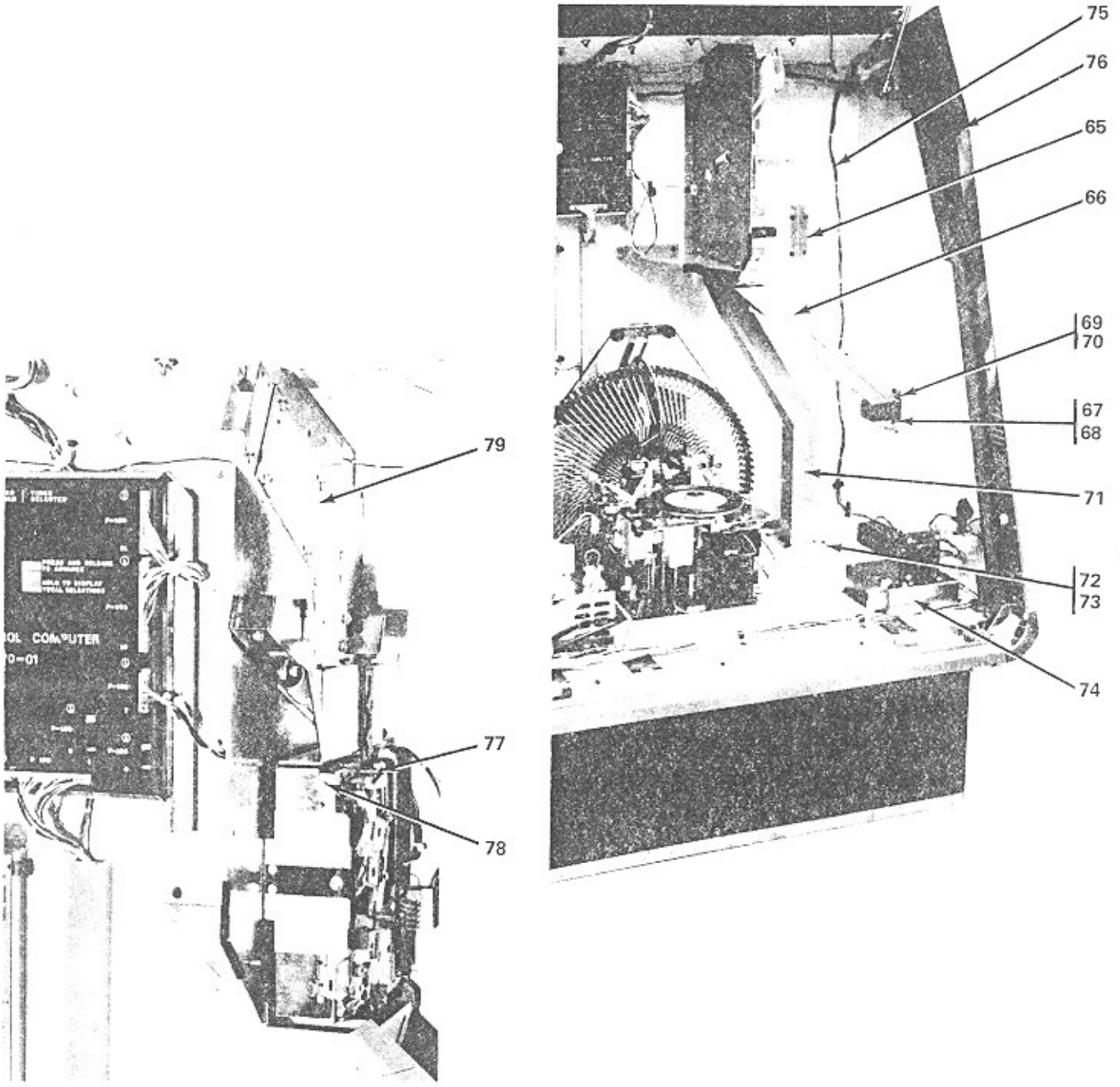


FIG. AND INDEX NO.	ROWE PART NO.	DESCRIPTION	QTY. PER ASSY
1-	6-09200-01	R-85 Phonograph Final Assembly (Starwood)(Continued)	
1-	6-09200-02	R-85 Phonograph Final Assembly (Starlight)(Continued)	
1-	6-09200-03	R-85 Phonograph Final Assembly (Starburst)(Continued)	
65	2-17901-02	. Hinge Support (Not on Bill Acceptor Model)	1
66	3-08374-01	. Slug Chute Assembly	1
67	2-17930-01	. Slug Cup Bracket	2
68	2-13578-02	. Elastic Stop Nut	1
69	2-17929-01	. Slug Cup Door	1
70	3-07817-02	. Slug Cup (Starlight & Starburst)	1
71	4-06767-03	. Lower Coin Chute Assembly	1
72	3-07437-01	. Coin Chute Collar	1
73	2-17544-01	. Coin Chute Gasket	1
74	4-07501-01	. Lamp Control Assembly (Starlight)(See Figure 5)	1
75	4-07518-01	. Disco Harness Assembly (Starlight)	1
	3-07491-04	. . Plug Housing (6 Ckt.)	1
	3-07490-04	. . Cap Housing (6 Ckt.)	2
	7-00975-02	. . Contact	5
	7-00975-03	. . Contact	5
	7-08001-07	. . Cable Tie	25
76	6-09273-01	. Filler Panel Assembly (RH) (Starwood & Starburst)	1
	6-09273-02	. Filler Panel Assembly (RH) (Starlight)	1
	6-09272-01	. Filler Panel Assembly (LH) (Starwood & Starburst)	1
	6-09272-02	. Filler Panel Assembly (LH) (Starlight)	1
	3-08613-01	. . Side Inlay	1
	3-08616-01	. . Light Block (RH) Upper	1
	3-08615-01	. . Light Block (LH) Upper	1
	7-02204-50	. . Foamed Tape (Starlight)	1
	7-02210-02	. . Foamed Pad (Starwood & Starburst)	1
	7-02204-53	. . Foamed Tape (Starwood & Starburst)	1
	4-07361-01	. . Trim Edge	1
	3-08618-01	. . Light Block (RH) Lower	1
	3-08617-01	. . Light Block (LH) Lower	1
	2-18627-01	. . Extension Tab	1
	6-09258-01	. . Filler Panel (RH)	1
	6-09257-01	. . Filler Panel (LH)	1
77	4-07159-01	. Slug Rejector (5c, 10c, 25c, 50c)	OPT
	4-07159-02	. Slug Rejector (5c, 10c, 25c, \$1.00)	OPT
	4-06962-01	. Slug Rejector (3 Coin Plastic)	OPT
78	4-07038-06	. Mounting Bracket and Coin Switch Assembly	1
	2-06368-01	. . Stud	1
	3-05787-03	. . Coin Switch Assembly	1
	2-18223-01	. . Slug Rej. Catch Plate	1
	2-17901-02	. . Rejector Hinge	1
	2-14114-01	. . Spacer (Not Used with 3 coin Rejector)	1
	4-05793-01	. . Slug Rejector Mounting Bracket Assembly	1
79	4-07372-01	. Support & Coin Chute Assembly	1
	2-12562-01	. . Spring	1
	2-18221-01	. . Slug Rejector Actuator	1
	2-51569-04	. . Shoulder Washer	1
	2-17556-02	. . Scavenge Link	1
	2-17656-01	. . Spring	1
	2-09225-02	. . Spacer	4
	2-18222-01	. . Scavenge Shaft	1
	3-08380-01	. . Gusset	1
	2-18256-01	. . Support Guard	1
	3-08370-01	. . Coin Chute Assembly (Upper)	1
	2-17901-02	. . Support Hinge	1

FIGURE  
1

# R-85 Phonograph Final Assembly Sheet 5

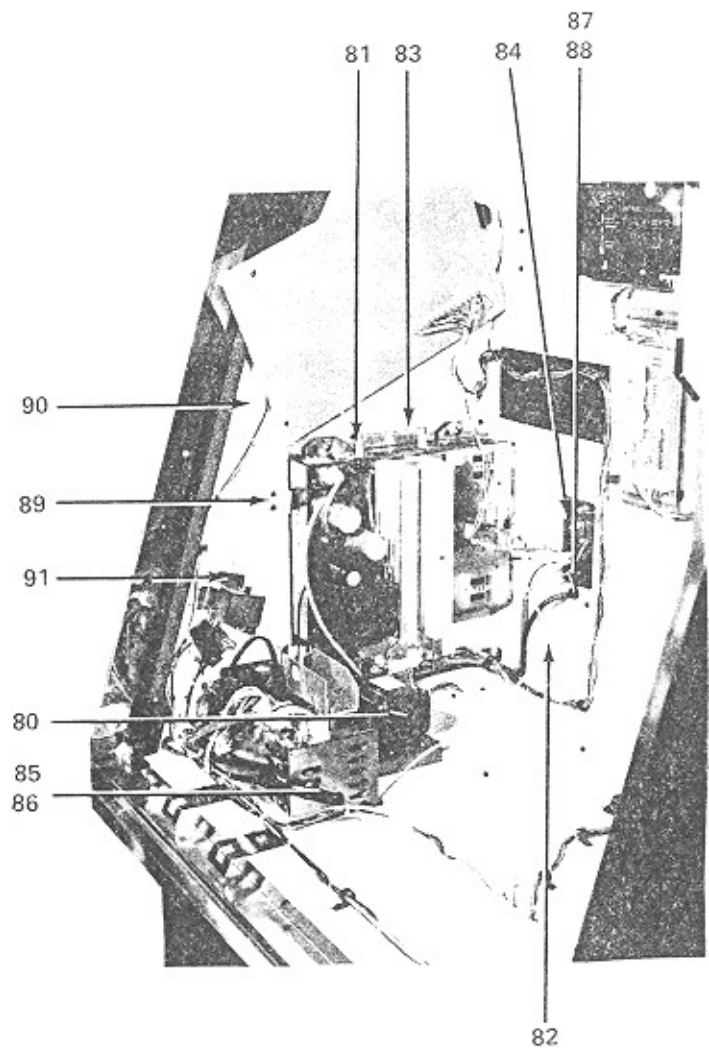
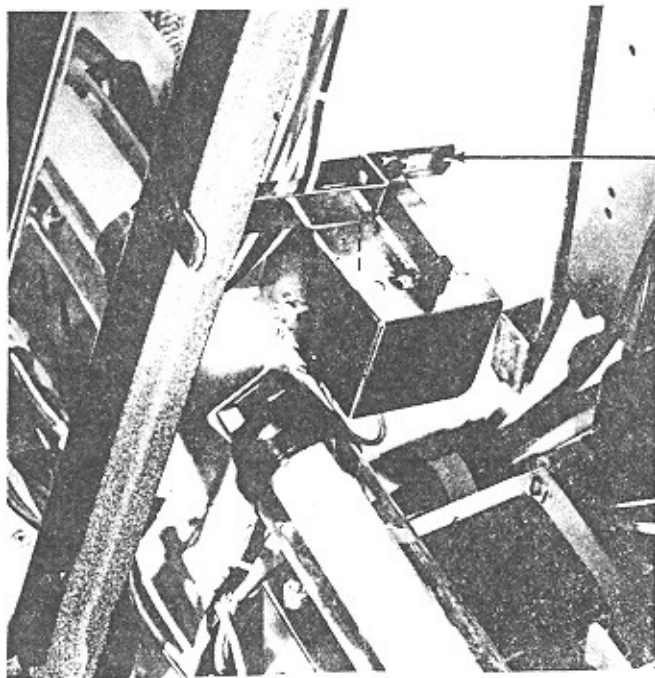


FIG. AND INDEX NO.	ROWE PART NO.	DESCRIPTION	QTY. PER ASSY
1-	6-09200-01	R-85 Phonograph Final Assembly (Starwood)(Continued)	
1-	6-09200-02	R-85 Phonograph Final Assembly (Starlight)(Continued)	
1-	6-09200-03	R-85 Phonograph Final Assembly (Starburst)(Continued)	
	6-07439-02	. 125 Watt Stereo Amplifier and Transformer Assembly	1
80	4-06336-04	. 125 Watt Output Transformer Assembly (See Figure 9)	1
81	6-07438-02	. 125 Watt Stereo Amplifier Assembly (See Figure 7)	1
82	3-08324-02	. Tone Arm Cable and Plug Assembly	1
83	4-02426-01	. Amplifier Mounting Bracket Assembly	1
84	3-07863-06	. Plug and Switch Assembly	1
	3-07857-01	. . S.P.S.T. Rocker Switch (Carling Switch NO. TGA0411-TB-B)	1
	3-07491-06	. . Plug Housing (6 Ckt.)	1
	7-08001-01	. . Cable Tie	1
85	4-07313-01	. Main power Supply (See Figure 11)	1
86	2-09256-01	. Mounting Bracket	1
87	2-17951-01	. Cord Hole Cover	1
88	7-02321-04	. Strain Relief	1
89	2-17159-01	. Light Bracket	2
	7-01200-01	. Washer	4
90	6-09250-01	. Shell Assembly (Starwood)(See Figure 6)	1
	6-09250-02	. Shell Assembly (Starlight & Starburst)(See Figure 6)	1
91	6-68972-02	. Harness and Console Assembly	1
	2-18269-01	. . Switch Housing Assembly	1
	2-14994-01	. . Insulator	1
	7-00931-03	. . Cable Clamp	2
	3-07491-05	. . Plug Housing (9 Ckt.) (To Mechanism, Ext., Speaker, Power Supply)	1
	3-07490-05	. . Cap Housing (9 Ckt.) (To Crossover Connector)	3
	7-00975-01	. . Contact	1
	7-00975-02	. . Contact	11
	7-00975-03	. . Contact	18
	2-13541-01	. . Cap Housing (7 Ckt.) (To Phono Speakers)	1
	2-13541-04	. . Cap Housing (7 Ckt.) (To Mute)	1
	7-00926-10	. . Contact (Pin)	1
	7-00926-11	. . Contact (Socket)	3
	2-17952-01	. . Control Plate	4
	2-15818-01	. . Momentary Contact Pushbutton Switch	1
	2-18005-01	. . Jumper Assembly	1
	2-51422-23	. . Jumper Assembly	1
	7-00965-10	. . Terminal Strip (On Amplifier Cover)	1
	7-00755-05	. . Connector Housing (5 Ckt.) (To Volume Control)	1
	7-00756-01	. . Contact Post	1
	2-18935-05	. . Volume Control and Terminal Assembly	3
	2-01799-01	. . Volume Control Knot	1
	7-01355-11	. . Palnut (Mounts Volume Control)	1
	7-00991-01	. . Self Stripping Splice	1
	7-08001-01	. . Cable Tie	3
	7-00913-02	. . Terminal Lug	80
	7-00913-08	. . Terminal Lug	4
	7-00913-16	. . Terminal Lug	2
	7-00913-21	. . Terminal Lug	11
	7-00931-01	. Cable Clamp	13
	7-00934-01	. Cable Clamp	3
	7-00934-02	. Cable Clamp	21
	7-00934-03	. Cable Clamp	2
	7-00931-03	. Cable Clamp	2
91A	3-08663-01	. Slide and Spring Actuator Asm.	1

# R-85 Phonograph Final Assembly Sheet 6

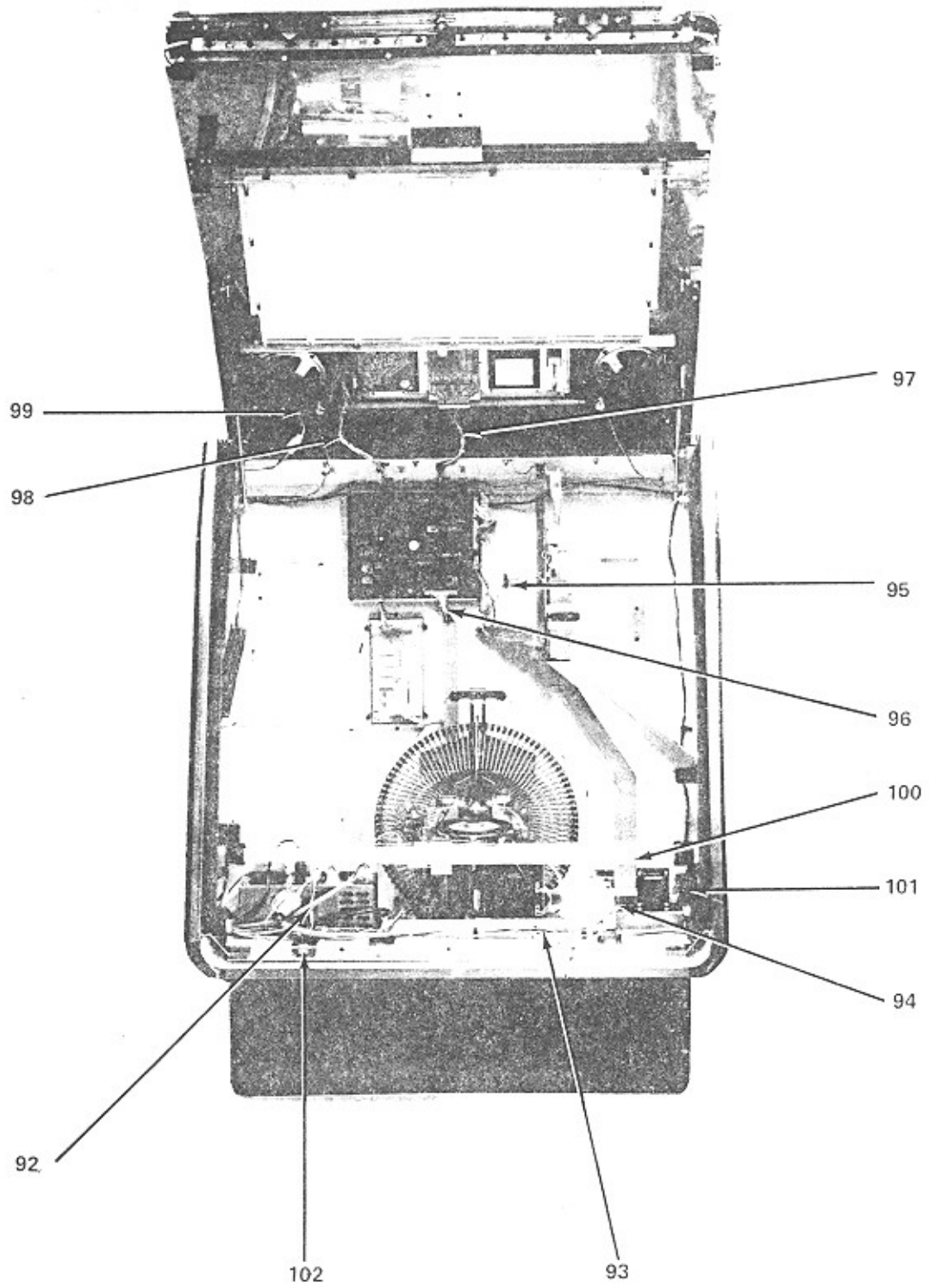


FIG. AND INDEX NO.	ROWE PART NO.	DESCRIPTION	QTY. PER ASSY
1-	6-09200-01	R-85 Phonograph Final Assembly (Starwood)(Continued)	
1-	6-09200-02	R-85 Phonograph Final Assembly (Starlight)(Continued)	
1-	6-09200-03	R-85 Phonograph Final Assembly (Starburst)(Continued)	
92	6-08973-01	. 110V Harness Assembly	1
	3-07431-02	. . Plug Housing (3 Ckt.)	3
	7-08001-01	. . Cable Tie	15
93	3-08379-01	. Power Harness Assembly (Starlight)	1
	3-07490-02	. . Cap Housing (3 Ckt.)	1
	3-07491-02	. . Plug Housing (3 Ckt.)	2
94	7-08001-01	. . Cable Tie	3
	3-07891-03	. Input Disco Harness Assembly (Starlight)	1
	7-00755-03	. . Connector Housing (3 Ckt.)	1
	7-0755-05	. . Connector Housing (5 Ckt.)	1
	7-00756-01	. . Contact Post	7
	7-00757-01	. . Keying Plug	1
	7-08001-07	. . Cable Tie	22
	2-13541-04	. . Cap Housing (7 Ckt.)	1
	2-13540-04	. . Plug Housing (7 Ckt.)	1
	7-00926-11	. . Contact	5
	7-00926-12	. . Contact	5
95	3-08336-02	. Coin Switch Harness	1
	7-00755-07	. . Connector Housing	2
	7-08001-01	. . Cable Tie	5
96	3-08328-02	. Mech Computer Harness	1
	7-00755-17	. . Connector Housing	2
	7-00756-01	. . Contact Post	30
	7-00757-02	. . Keying Plug	2
	7-08001-01	. . Cable Tie	30
97	3-08384-01	. Keyboard Harness	1
	7-00755-16	. . Connector Housing	2
	7-00756-01	. . Contact Post	30
	7-00757-01	. . Keying Plug	1
	7-00757-02	. . Keying Plug	1
	7-08001-01	. . Cable Tie	15
98	4-07379-01	. Selector Harness	1
	2-50572-04	. . Edge Connector	1
	7-00929-01	. . Terminal Mod. Fork	12
	2-50586-01	. . Keying Post	1
	7-00755-11	. . Connector Housing	1
	7-00755-16	. . Connector Housing	1
	7-00755-18	. . Connector Housing	1
	7-00756-01	. . Contact Post	39
	7-00757-02	. . Keying Post	2
	7-08001-01	. . Cable Tie	16
99	4-07515-01	. Light Harness Assembly	1
	4-07515-02	. Light Harness Assembly (Canada)	1
	2-15693-01	. . Ballast (30 Watt)	1
	2-15693-02	. . Ballast (30 Watt) (Canada)	1
	2-18236-01	. . Ballast (13 Watt)	1
	2-18236-02	. . Ballast (13 Watt) (Canada)	1
	2-00295-01	. . Starter Socket	2
	2-18267-06	. . Fluorescent Lampholder	1
	2-18267-07	. . Fluorescent Lampholder	1
	2-18237-01	. . Miniature Lampholder	2
	2-18242-01	. . Starter Bracket	1
	3-07490-02	. . Cap Housing (3 Circuit)	1
	7-00975-03	. . Contact	
	7-00916-02	. . Terminal Lug	1
	7-00921-07	. . Solderless Converter	3
	7-00921-14	. . Solderless Converter	8
100	7-00601-15	. Fluorescent Lamp	1
101	7-00800-04	. Fluorescent Starter	1
102	2-18617-01	. Strike Plate	3

**FIGURE  
2**

# Door Assembly (Starwood & Starburst)

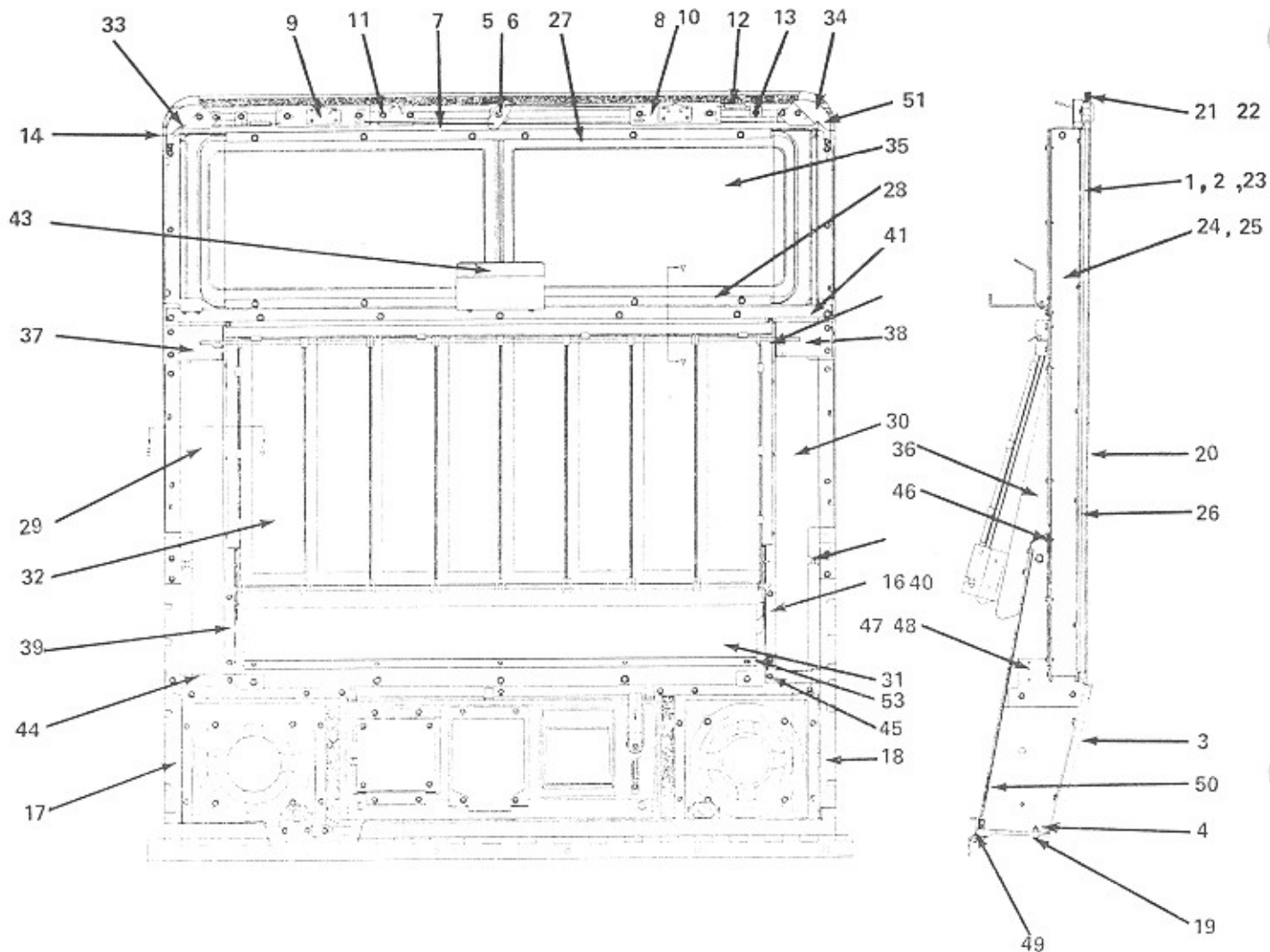


FIG. AND INDEX NO.	ROWE PART NO.	DESCRIPTION	QTY. PER ASSY
--------------------	---------------	-------------	---------------

2-	6-09271-01	Door Assembly (Starwood)(Figure 1, Item 3)	REF
2-	6-09271-02	Door Assembly (Starburst)(Figure 1, Item 3)	REF
1	2-18206-01	. Channel Rubber	2
2	2-18206-08	. Channel Rubber	2
3	6-08964-03	. Selector & Grille Assembly (Starwood)	1
3	6-08964-04	. Selector & Grille Assembly (Starburst)	1
4	2-13578-04	. Elastic Stop Nut	4
5	7-01632-06	. Cylinder Lock (Common Keying)	1
6	2-14256-01	. Lock Bolt	1
7	2-17249-03	. Lock Bar Link	2
8	2-09225-02	. Spacer	4
9	2-18606-01	. Lock Bar Assembly (LH)	1
10	2-18607-01	. Lock Bar Assembly (RH)	1

FIG. AND INDEX NO.	ROWE PART NO.	DESCRIPTION	QTY. PER ASSY
2-	6-09271-01	Door Assembly (Starwood)(Figure 1, Item 3)	REF
2-	6-09271-02	Door Assembly (Starburst)(Figure 1, Item 3)	REF
11	2-18608-01	. Guide	1
12	2-12562-01	. Tension Spring	2
13	2-15674-01	. Spring Retainer	2
14	2-09224-01	. Corner Gusset	2
15	2-17976-01	. Ball Stud	2
16	2-08629-01	. Light Block	2
17	6-09265-01	. Door Support (LH)	1
18	6-09266-01	. Door Support (RH)	1
19	7-01341-20	. Screw 1/4 - 20 x 3/4	4
20	3-08600-01	. Door Frame	2
21	6-09256-01	. Door Lower Trim	1
22	7-02204-52	. Foamed Tape	1
23	2-18609-01	. Window	1
24	6-09263-01	. Door Support Channel (LH)	1
25	6-09264-01	. Door Support Channel (RH)	1
26	2-18610-01	. Spacer Plate	2
27	4-07506-01	. Lower Support Frame	1
28	3-08603-01	. Upper Support Frame	1
29	3-08610-01	. Trim & Decal Assembly (LH) (Starwood)	1
	3-08610-02	. Trim & Decal Assembly (LH) (Starburst)	1
30	3-08611-01	. Trim & Decal Assembly (RH) (Starwood)	1
	3-08611-02	. Trim & Decal Assembly (RH) (Starburst)	1
31	3-08622-02	. Diffuser Assembly (Starwood)	1
	3-08622-03	. Diffuser Assembly (Starburst)	1
32	4-07507-01	. Title Rack Assembly (Starwood)	1
	4-07507-02	. Title Rack Assembly (Starburst)	1
33	3-08625-01	. Light Seal (LH)	1
34	3-08626-01	. Light Seal (RH)	1
35	4-07508-01	. Frame Assembly (Starwood)	2
	4-07508-02	. Frame Assembly (Starburst)	2
36	6-09267-01	. Housing Assembly	1
37	2-18611-01	. Latch Assembly (LH)	1
38	2-18612-01	. Latch Assembly (RH)	1
39	6-09275-01	. Shroud Side Trim (LH)	1
40	6-09276-01	. Shroud Side Trim (RH)	1
41	4-07516-01	. Lower Shroud Trim	1
42	3-08612-01	. Retainer Angle	1
43	2-18621-01	. Tone Arm Shield	1
44	3-08620-01	. Cap (LH)	1
45	3-08621-01	. Cap (RH)	1
46	2-18628-01	. Light Block Support	2
47	3-08630-01	. Side Light Block (LH)	1
48	3-08631-01	. Side Light Block (RH)	1
49	7-02204-09	. Foamed Tape	2
50	2-18629-01	. Light Block Strip	2
51	2-18206-09	. Channel Rubber	2
52	7-02210-01	. Foam Pad - 1 1/2"	2
53	7-02204-43	. Foam Tape	2
	2-09225-02	. Spacer	4



**FIGURE  
3**

# Door Assembly (Starlight)

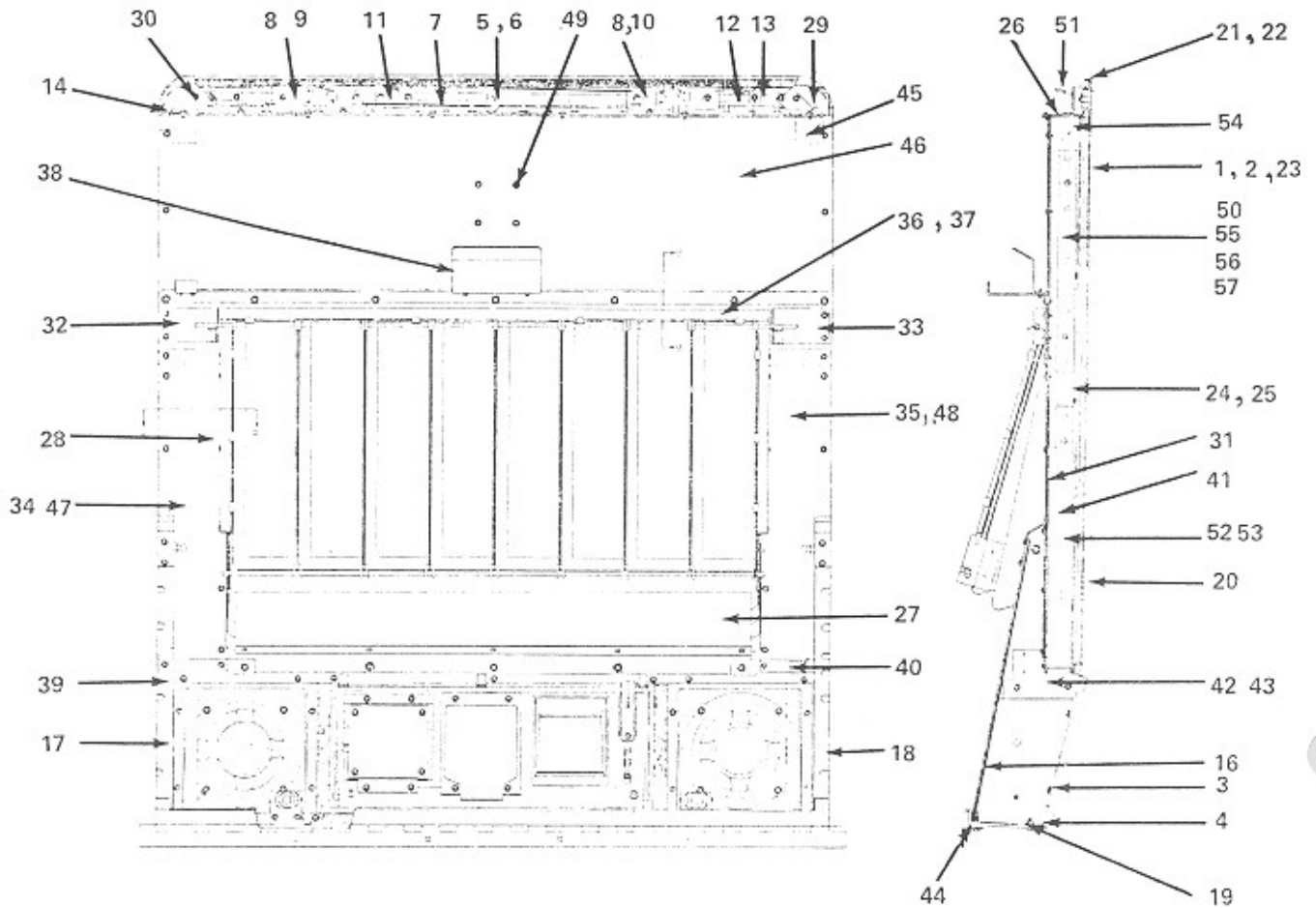


FIG. AND INDEX NO.	ROWE PART NO.	DESCRIPTION	QTY. PER ASSY
--------------------	---------------	-------------	---------------

3-	6-09271-02	Door Assembly (Starlight)	REF
1	2-18201-01	. Channel Rubber	2
2	2-18206-08	. Channel Rubber	2
3	6-08964-05	. Selector & Grille Assembly	1
4	2-13578-04	. Elastic Stop Nut	4
5	7-01632-06	. Cylinder Lock (Common Keying)	1
6	2-14256-01	. Lock Bolt	1
7	2-17249-03	. Lock Bar Link	2
8	2-09225-02	. Spacer	4
9	2-18606-01	. Lock Bar Assembly (LH)	1
10	2-18607-01	. Lock Bar Assembly (RH)	1

FIG. AND INDEX NO.	ROWE PART NO.	DESCRIPTION	QTY. PER ASSY
3-	6-09271-02	Door Assembly (Starlight)(Figure 1, Item 3)	REF
11	2-18608-01	. Guide	1
12	2-12562-01	. Tension Spring	2
13	2-15674-01	. Spring Retainer	2
14	2-09224-01	. Corner Gusset	2
15	2-17976-01	. Ball Stud	2
16	2-18629-01	. Light Block Strip	2
17	6-09265-01	. Door Support (LH)	1
18	6-09266-01	. Door Support (RH)	1
19	7-01341-20	. Screw 1/4 - 20 x 3/4	4
20	3-08606-01	. Door Frame	2
21	6-09256-02	. Lower Door Trim	1
22	7-02204-52	. Foamed Tape	1
23	4-07522-01	. Decorative Window	1
24	3-08607-01	. Channel Assembly (LH)	1
25	3-08609-01	. Channel Assembly (RH)	1
26	2-18619-01	. Lower Lamp Support Assembly	1
27	3-08622-01	. Diffuser Assembly	1
28	4-07507-01	. Title Rack Assembly	1
29	3-08625-01	. Light Seal (LH)	1
30	3-08626-01	. Light Seal (RH)	1
31	6-09267-01	. Housing Assembly	1
32	2-18611-01	. Latch Assembly (LH)	1
33	2-18612-01	. Latch Assembly (RH)	1
34	6-09275-01	. Shroud Side Trim (LH)	1
35	6-09276-01	. Shroud Side Trim (RH)	1
36	2-18620-01	. Lower Shroud Trim Assembly	1
37	3-08612-01	. Retainer Angle	1
38	2-18621-01	. Tone Arm Shield	1
39	3-08620-01	. Cap (LH)	1
40	3-08621-01	. Cap (RH)	1
41	2-18628-01	. Light Block Support	2
42	3-08630-01	. Side Light Block (LH)	1
43	3-08631-01	. Side Light Block (RH)	1
44	7-02204-09	. Foamed Tape	2
45	7-02210-01	. Foamed Pad 1 1/2"	2
46	6-09270-01	. Opaque Mirror (Lower)	1
47	4-07519-01	. Opaque Mirror (Side) (LH)	1
48	4-07520-01	. Opaque Mirror (Side) (RH)	1
49	2-18618-01	. Mirror Assembly	1
50	6-09252-01	. Printed Wiring Board - 5 Lamp	6
51	6-09252-02	. Printed Wiring Board - 6 Lamp	2
52	3-08624-01	. Shield	
53	2-18004-01	. Retainer	2
54	4-07510-01	. Disco Harness Assembly	8
	7-00766-05	. Edge Connector	2
	7-00767-01	. Contact	4
	3-07491-04	. Cap Housing	20
	7-00975-02	. Contact	1
	7-08001-01	. Cable Tie	5
55	2-18622-01	. Lamp & Socket Assembly	24
56	7-02105-06	. Protective Molding	42
57	7-02105-07	. Protective Molding	2
	2-09225-02	. Spacer	2

# Selector And Grille Assembly

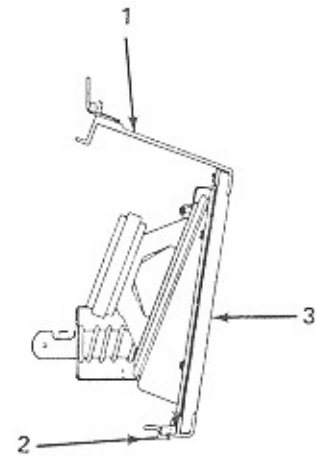
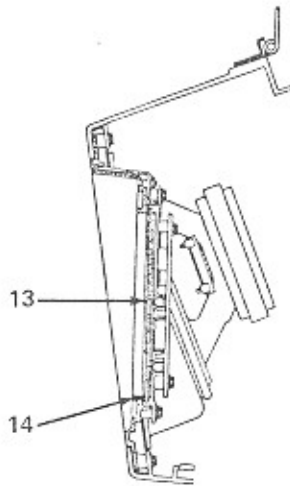
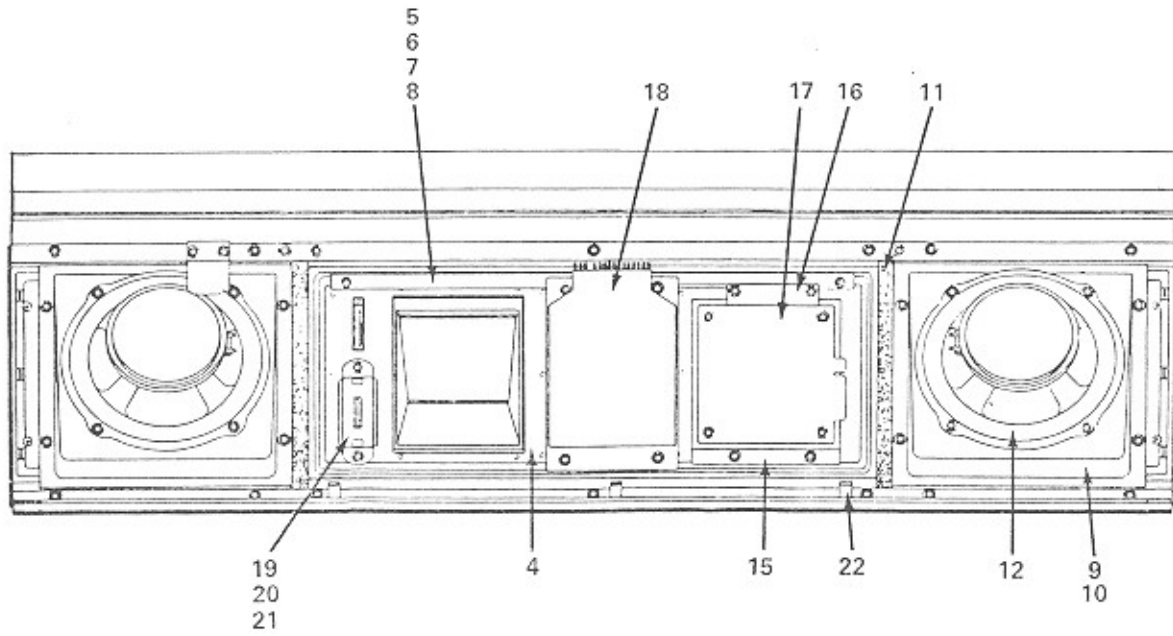


FIG. AND INDEX NO.	ROWE PART NO.	DESCRIPTION	QTY. PER ASSY
4	6-08964-03	Selector & Grille Assembly (Starwood)(Figure 2, Item 3)	REF
	6-08964-04	Selector & Grille Assembly (Starburst)	REF
	6-08964-05	Selector & Grille Assembly (Starlight)	REF
1	4-07368-03	. Trim & Hinge Assembly (Starwood)	1
	4-07368-04	. Trim & Hinge Assembly (Starlight & Starburst)	1
2	4-07503-01	. Bottom Trim (Starwood)	1
	4-07503-02	. Bottom Trim (Starburst)	1
	4-07503-03	. Bottom Trim (Starlight)	1
3	3-08366-03	. Trim & Grille Assembly	1
	6-08953-01	. . Grille Trim	1
	6-08960-03	. . Top Grille	1
	2-19219-01	. . Foamed Pad	1
4	4-07369-02	. Selector Trim & Insert Assembly	1
	6-08952-01	. . Selector Trim	1
	4-07352-01	. . Selector Insert	1
	4-07353-01	. . Price Card Insert	1
	4-07356-01	. . Coin Inlet Insert	1
	2-18602-01	. . Popular Button Label	1
	7-05000-04	. . Circuit Board Support	1
5	3-08368-01	. Diffuser	1
6	2-12815-01	. Push-On Speed Nut	3
7	2-018262-02	. Diffuser Color Film (Starwood & Starburst)	1
8	2-18262-03	. Diffuser Color Film (Starlight)	1
9	6-08971-01	. Speaker Mount	2
10	7-02204-39	. Foamed Tape	8
11	7-02204-41	. Foamed Tape	2
12	4-07315-01	. Speaker-Mid Range	2
13	2-18217-01	. Price Card Window	1
14	7-02124-02	. Cork Composition	4
15	3-08355-01	. Price Card Holder	1
16	2-18218-01	. Price Card Retainer	1
17	4-07363-01	. Digital Display Assembly	1
	6-08963-01	. . Digital Display Printed Wiring Board	1
	2-17667-01	. . LED Display	3
	7-00353-03	. . Light Emitting Diode	6
	7-00120-08	. . 1/2 Watt Carbon Resistor (47 ohm ± 10%)	3
	7-9901-101	. . 1/4 Watt Carbon Resistor (100 ohm ± 5%)	7
18	4-07362-01	. Keyboard Assembly	1
	3-08357-01	. . Support Plate Assembly	1
	6-08959-01	. . Keyboard Printed Wiring Board	1
	3-08371-01	. . Keyboard Switch	12
	7-00760-16	. . Polarizing Wafer - 90°	1
	7-02121-16	. Sponge Rubber	2
	3-08381-01	. . Pushbutton Number Series	1
	3-08381-02	. . Pushbutton Number Series	1
	3-08381-03	. . Pushbutton Number Series	1
	3-08381-04	. . Pushbutton Number Series	1
	3-08381-05	. . Pushbutton Number Series	1
	3-08381-06	. . Pushbutton Number Series	1
	3-08381-07	. . Pushbutton Number Series	1
	3-08381-08	. . Pushbutton Number Series	1
	3-08381-09	. . Pushbutton Number Series	1
	3-08381-10	. . Pushbutton Number Series	1
	3-07432-04	. . Popular Pushbutton (Solid State)	1
	3-07432-03	. . Reset Pushbutton (Solid State)	1
19	2-17429-04	. Reject Button & Shaft Assembly	1
	2-17413-02	. . Coin Return Shaft	1
	3-06996-04	. . Coin Return Button	1
20	3-07015-03	. Guide Bracket	1
21	2-18229-01	. Spring	1
22	2-07545-01	. Clip	3

**FIGURE  
5**

# Lamp Control Assembly

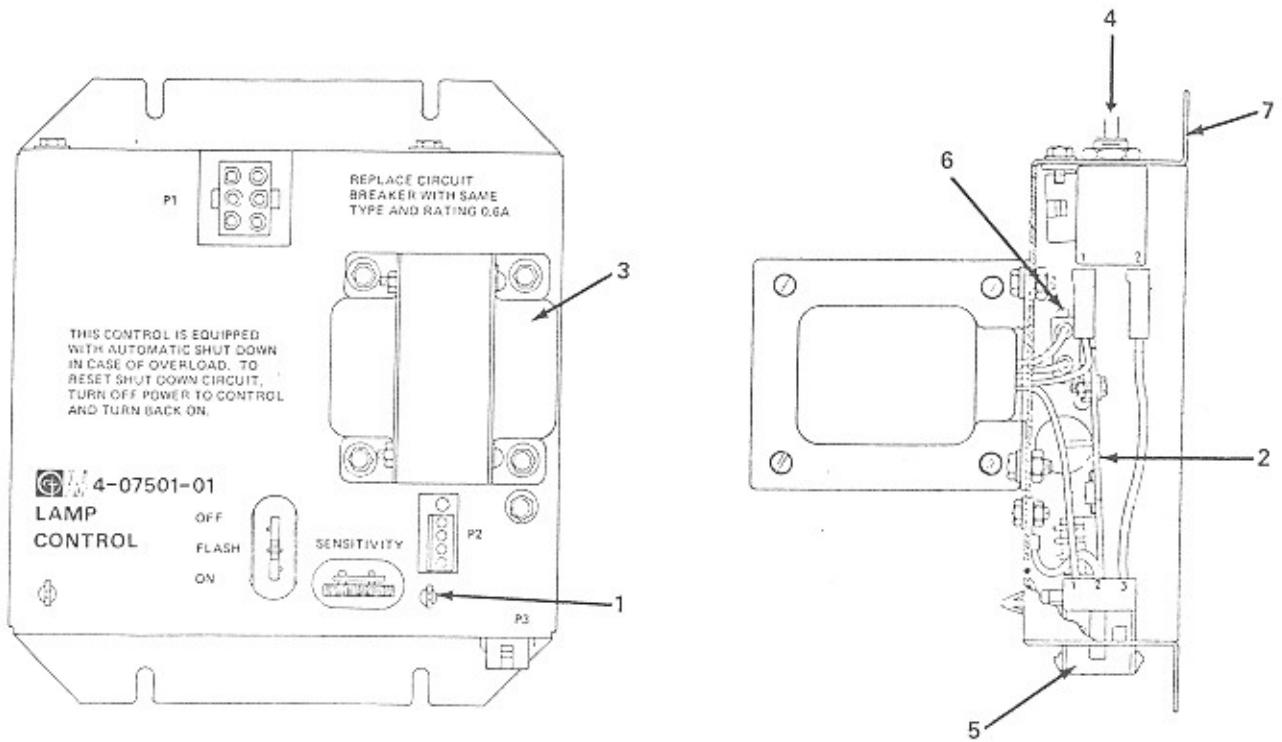


FIG. AND INDEX NO.	ROWE PART NO.	DESCRIPTION	QTY. PER ASSY
5-	4-07501-01	Lamp Control Assembly (Starlight)(Figure 1, Item 75)	REF
1	7-05000-18	. Circuit Board Support	2
2	6-09255-01	. Lamp Control Circuit Board Assembly (See Schem. for P.L.)	1
3	4-07502-01	. Transformer	1
4	7-00733-08	. Circuit Breaker (CBI)	1
5	3-07490-02	. Cap Housing (3 Ckt.)	1
6	3-07491-01	. Cap Housing (2 Ckt.)	1
7	4-07500-01	. Lamp Control Cover	1
	2-14086-03	. Straight Receptacle	2
	2-51422-28	. Jumper Assembly	1
	7-00913-22	. Terminal Lug	1
	7-00975-04	. Contact	1
	2-51422-28	. Jumper Assembly	1
	7-00915-05	. Terminal Lug	1
	7-00975-04	. Contact	1

# Shell Assembly

**FIGURE  
6**

FIG. AND INDEX NO.	ROWE PART NO.	DESCRIPTION	QTY. PER ASSY
6-	6-09250-01	Shell Assembly, (Figure 1, Item 90)	REF
6-	6-09250-02	Shell Assembly, (Figure 1, Item 90)	REF
	4-07387-01	. Cabinet Angle	2
	2-15372-01	. Teenut (Mechanism Tie Down)	2
	2-17506-08	. Vent Tube	1
	2-17506-09	. Vent Tube	1
	7-02401-19	. Wire Mech Screen	1
	3-06257-01	. Hand Hole Cover	4
	4-06001-02	. Support Bracket Assembly	1
	2-14518-01	. Lock Spring	1
	3-06340-01	. Caster & Cup Assembly	4
	3-07876-06	. Short Skid	2
	2-09326-01	. Teenut	2
	4-07028-02	. Skid Rail	2

# Stereo Amplifier System Assembly

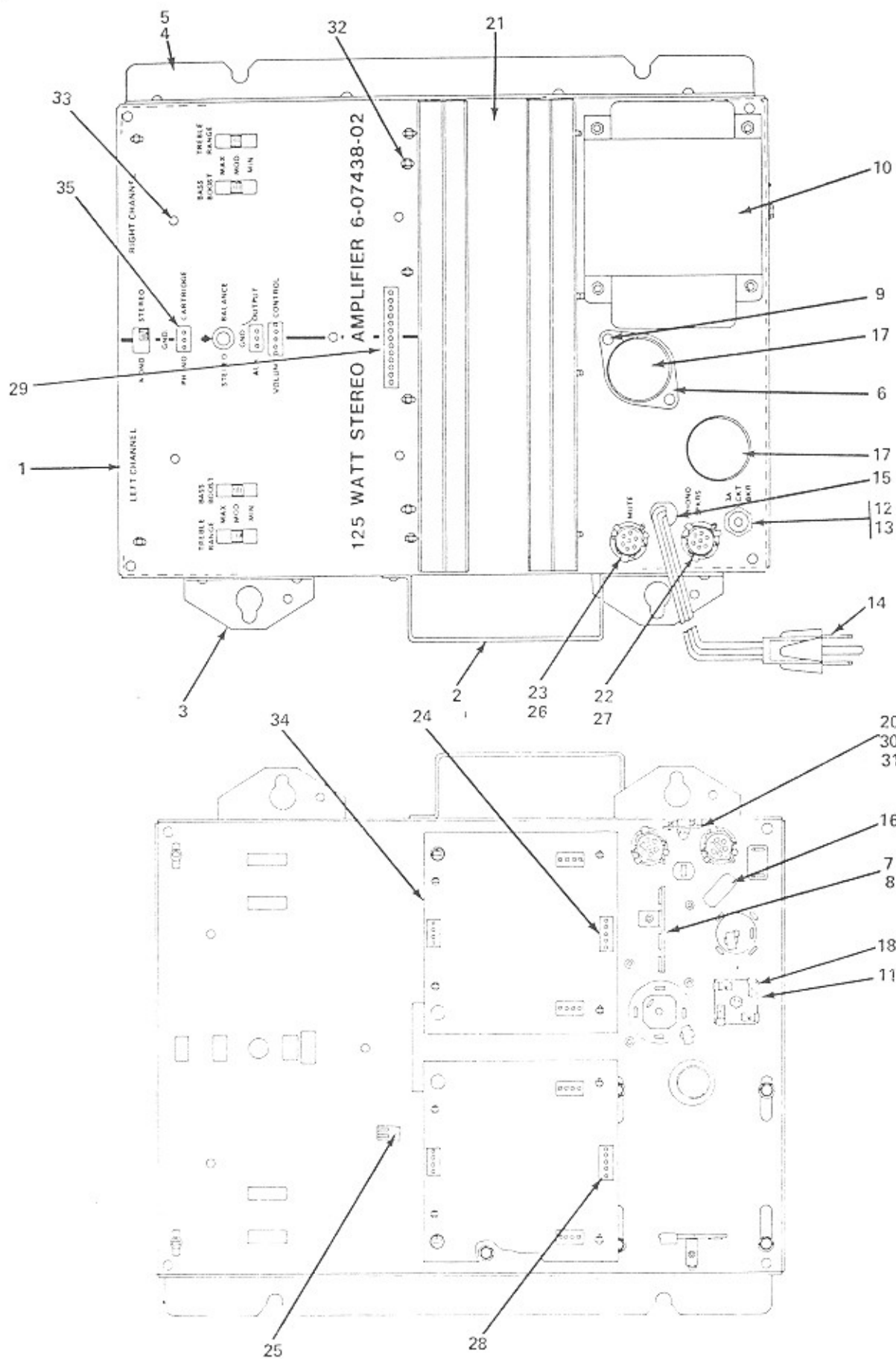


FIG. AND INDEX NO.	ROWE PART NO.	DESCRIPTION	QTY. PER ASSY
7-	6-07438-02	Stereo Amplifier Assembly (Figure 1, Item 81)	REF
1	6-07441-02	. Chassis Assembly	1
2	2-14881-01	. Handle	1
3	2-09272-01	. Mounting Bracket	2
4	3-06273-01	. Mounting Bracket	1
5	7-01113-20	. Semi Tubular Rivet	10
6	2-13910-01	. Mounting Wafer	1
7	2-17241-01	. Terminal Strip	1
8	7-01110-26	. Semi Tubular Rivet	1
9	7-01110-07	. Semi Tubular Rivet	2
10	4-07378-01	. Power Transformer	1
11	7-00967-01	. Easton Insulator	1
12	7-00733-17	. Circuit Breaker	1
13	7-01220-11	. Washer	1
14	7-00502-02	. 3 Conductor Cord & Plug	1
15	7-02322-05	. Strain Relief	1
16	7-00213-01	. Mylar Capacitor	1
17	2-18231-01	. Electrolytic Capacitor	2
18	2-18225-01	. Bridge Rectifier	1
19	6-08552-01	. Stereo Preamplifier Assembly (Not Shown)	1
20	2-18140-02	. Self Locking Capnut	1
21	4-07151-02	. Heat Sink Assembly (See Figure 8)	1
22	2-13540-01	. Plug Housing (Combo)	1
23	2-13540-04	. Plug Housing (Combo)	1
24	7-00755-05	. Connector Housing (5 Ckt.)	2
25	7-00755-02	. Connector Housing (2 Ckt.)	1
26	7-00926-10	. Contact (Pin)	3
27	7-00926-14	. Contact (Socket)	4
28	7-00756-01	. Post Contact	16
29	7-00755-13	. Connector Housing (13 Ckt.)	1
30	7-01216-16	. Spacer	1
31	3-04254-01	. Speaker Overload Ind. Circuit Board Assembly	1
32	7-05000-04	. Circuit Board Support	8
33	7-05000-18	. Circuit Board Support	4
34	4-07101-01	. Driver Circuit Board Assembly	2
35	7-00755-03	. Connector Housing (3 Ckt.)	1



FIGURE  
8

# Heat Sink Assembly

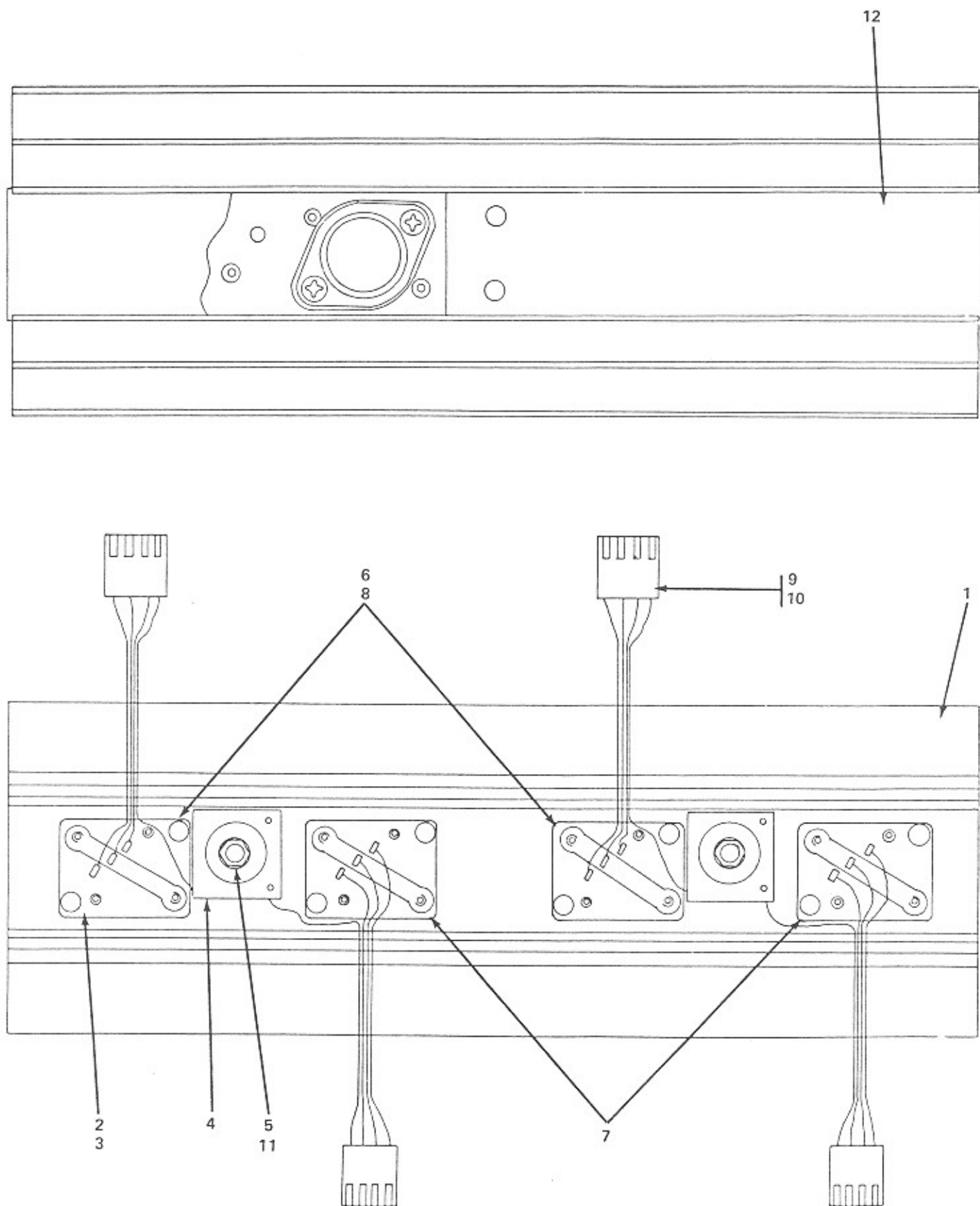


FIG. AND INDEX NO.	ROWE PART NO.	DESCRIPTION	QTY. PER ASSY
8-	4-07151-02	Heat Sink Assembly (Figure 11)	REF
1	4-07103-01	. Heat Sink	1
2	2-13044-01	. Power Transistor Socket	4
3	7-01111-14	. Semi Tubular Rivet	8
4	3-04253-01	. Power Amp Bias Circuit Board Assembly	2
	4-06359-01	. . Power Amp Bias Printed Wiring Board	1
	7-00350-02	. . Silicon Diode	3
	7-00756-01	. . Post Contact	2
5	2-13303-01	. Roller Ring	2
6	7-00302-06	. Transistor (Darlington Amp)	2
7	7-00302-07	. Transistor (Darlington Amp)	2
8	2-13189-01	. Insulator	4
9	7-00755-04	. Connector Housing	4
10	7-00756-01	. Post Contact	6
11	7-01200-10	. Washer	2
12	2-17980-01	. Cover	2

# Output Transformer Assembly

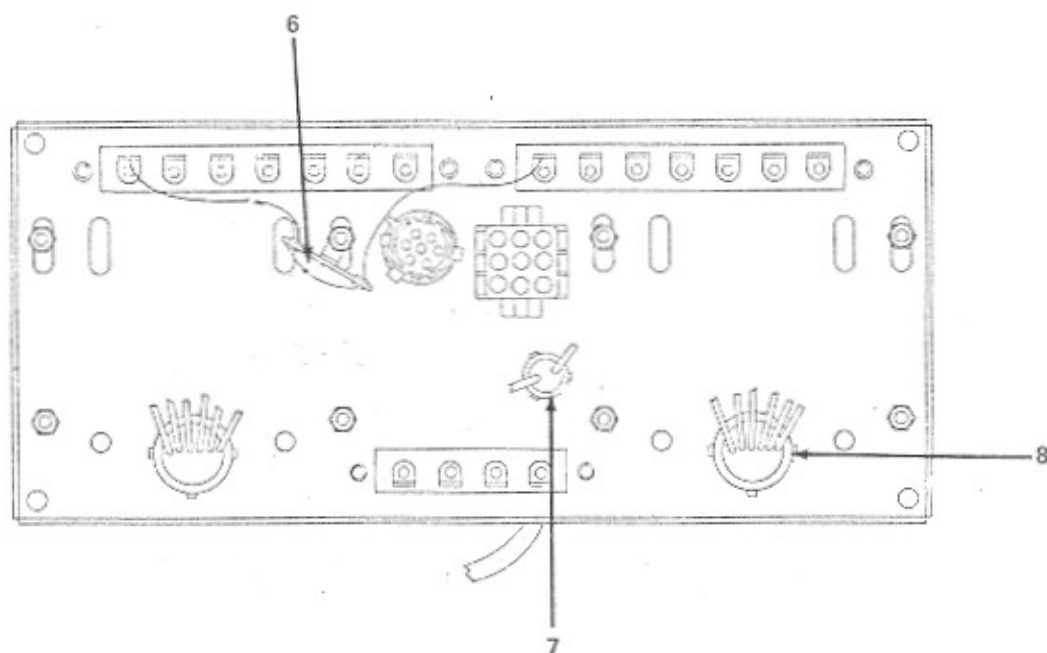
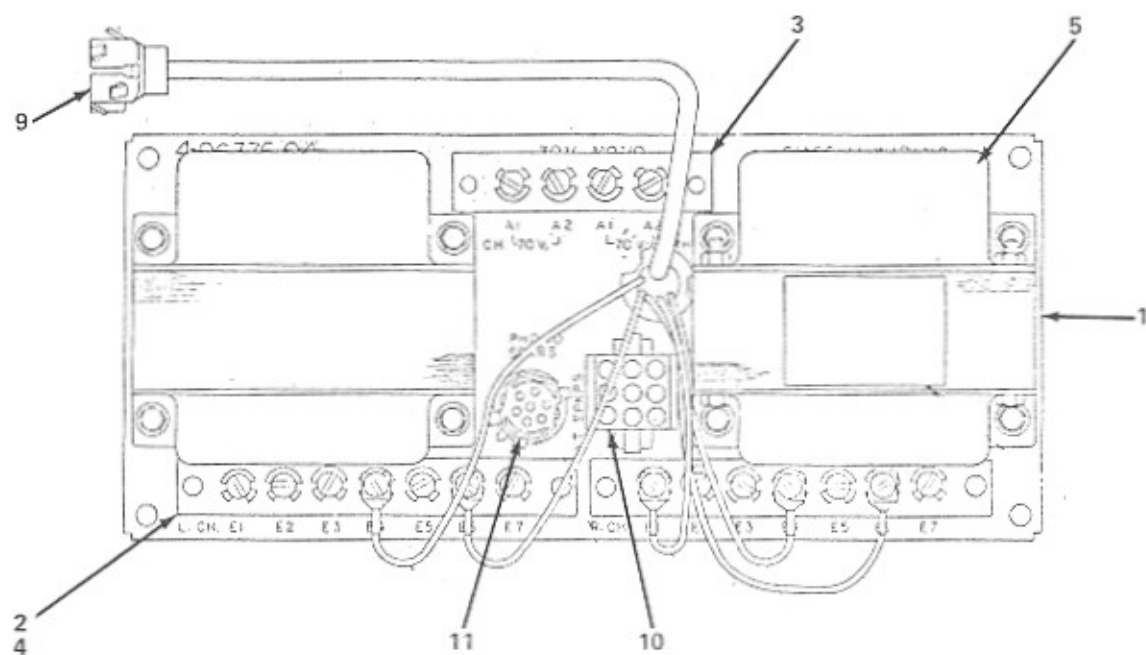


FIG. AND INDEX NO.	ROWE PART NO.	DESCRIPTION	QTY. PER ASSY
9-	4-06336-04	Output Transformer Assembly (Figure 1, Item 80)	REF
1	3-06260-06	. Output Chassis	1
2	3-04267-05	. Binding Post Strip	2
3	3-04267-03	. Binding Post Strip	1
4	7-01110-07	. Semi Tubular Rivet	6
5	4-06335-01	. Output Transformer	2
6	3-04225-14	. Terminal Strip	1
7	7-02331-01	. Insulating Bushing	1
8	7-02331-02	. Insulating Bushing	2
9	3-06327-01	. Plug & Cable Assembly	1
	2-13541-01	. . Cap Housing (Combo 7 Ckt.)	1
	7-00926-10	. . Contact (Pin)	4
10	3-07488-01	. Plug & Cable Assembly	1
	3-07490-05	. . Cap Housing (9 Ckt.)	1
	7-00975-02	. . Contact	8
	7-00910-12	. . Spade Terminal Lug	2
11	2-15373-03	. Plug & Cable Assembly	1
	2-13540-01	. . Pin Housing (Combo 7 Ckt.)	1
	7-00926-11	. . contact (Socket)	4
	7-00910-12	. . Spade Terminal Lug	3

# Central Control Computer

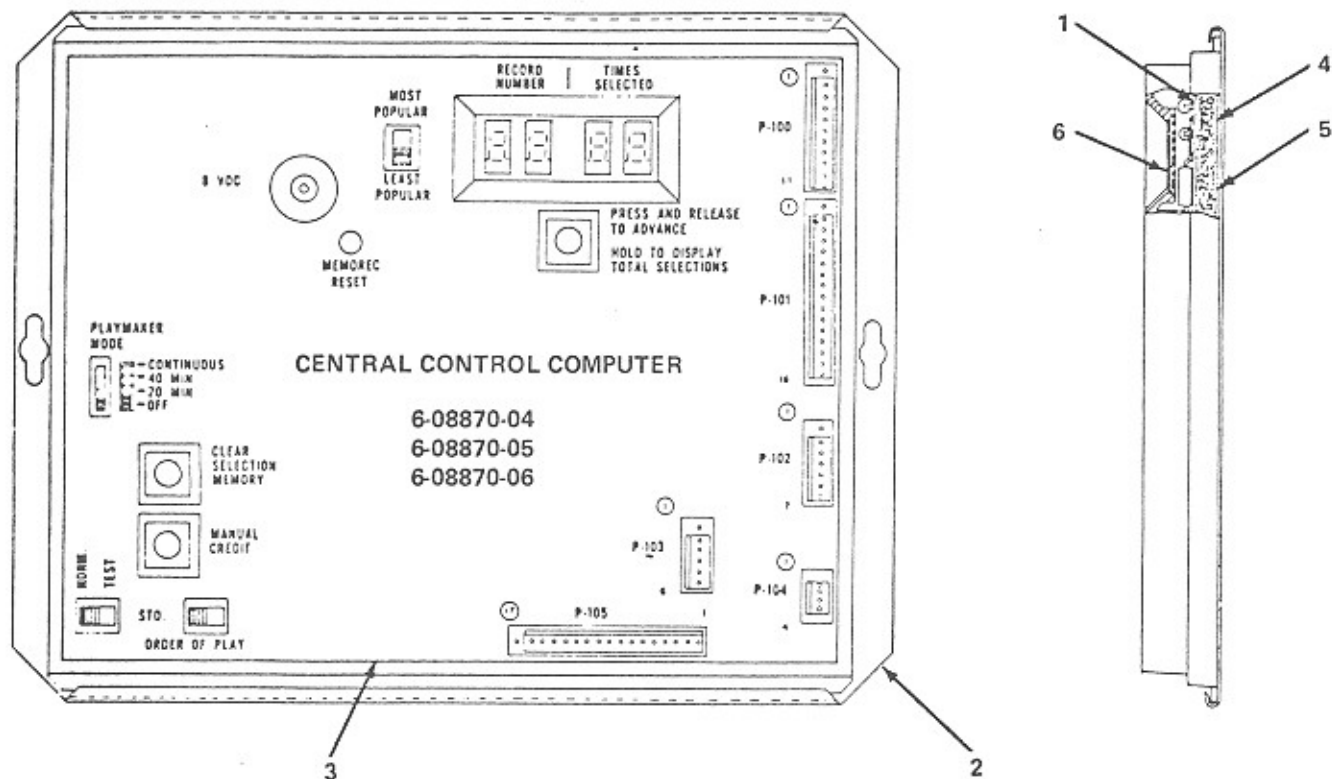


FIG. AND INDEX NO.	ROWE PART NO.	DESCRIPTION	QTY. PER ASSY
10-	6-08870-01	Central Control Computer (Figure 1, Item 39)	REF
	6-08870-04	Yellow for U.S. & Europe	REF
	6-08870-05	White for U.S. Only	REF
	6-08870-06	White for U.S. Only	REF
1	6-08871-03	. Central Computer Circuit Board Assembly (See Schematic for Parts List)	1
2	6-08883-01	. Central Computer Base	1
3	4-07322-03	. Central Control Computer Cover	1
4	2-17711-06	. Insulation Base	1
5	2-17710-09	. Insulation Pad	1
6	2-17819-05	. Display Card Light Filter	1

# Main Power Supply

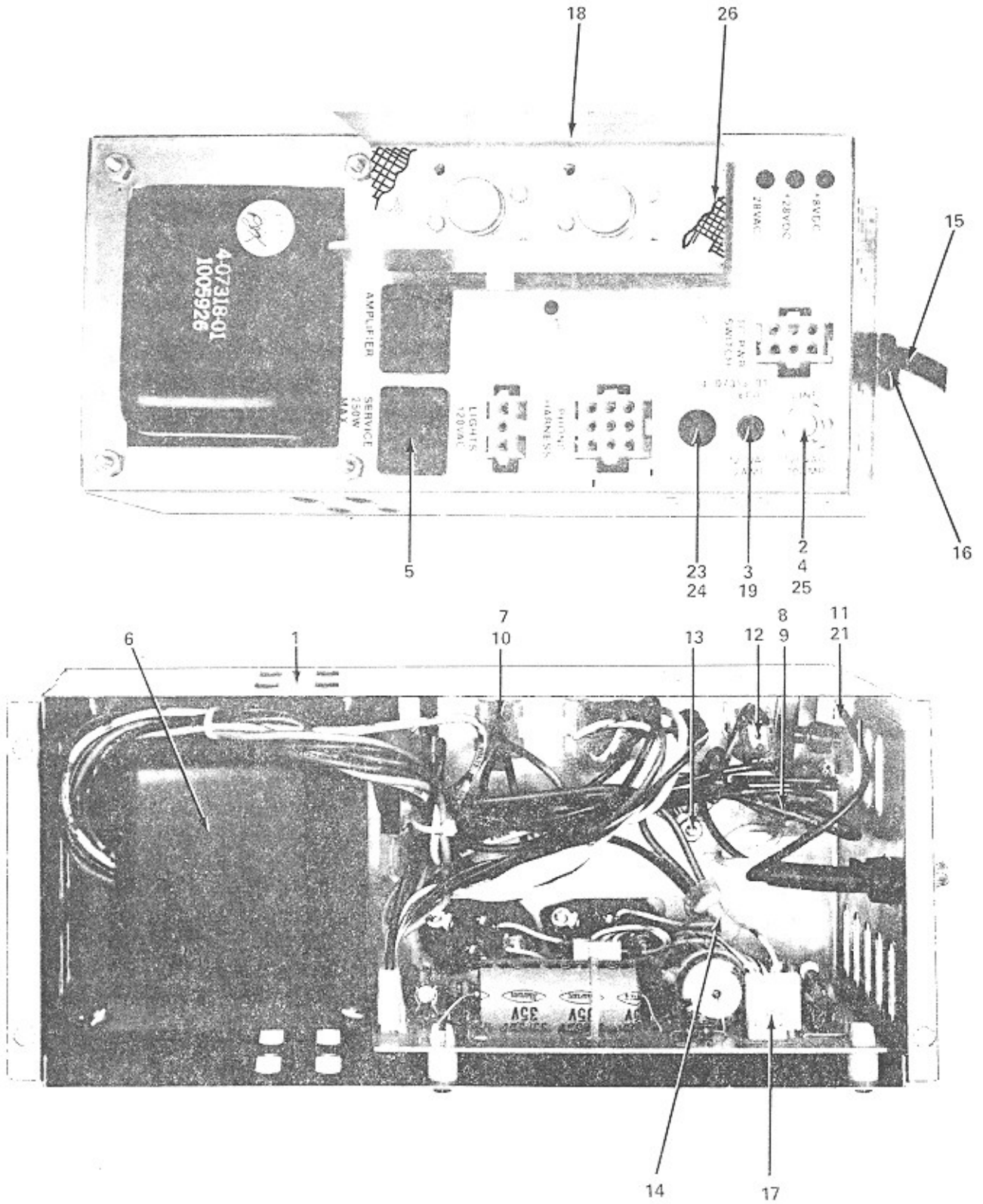


FIG. AND INDEX NO.	ROWE PART NO.	DESCRIPTION	QTY. PER ASSY
11-	4-07313-01	Main Power Supply (120 V)(Figure 1, Item 85)	REF
	4-65087-02	Main Power Supply (220 V)	REF
	4-65087-03	Main Power Supply (240 V)	REF
1	4-07322-01	. Chassis Assembly	1
2	7-00734-25	. 10 Amp Circuit Breaker	1
3	7-00733-15	. 2 Amp Circuit Breaker	1
4	7-01220-01	. Washer (Internal Lock)	2
5	2-13759-01	. 3 Wire Convenience Outlet	2
6	3-07892-01	. Transformer & Harness Ass'y	1
	4-07318-01	. . Power Transformer (120 V)	1
	4-65086-01	. . Power Transformer (220 V - 240 V)	REF
	3-07490-05	. . Cap Housing (9 Ckt.)	1
	7-00975-02	. . Contact	3
	7-00755-12	. . Connector Housing	1
	7-00756-01	. . Post Contact	6
	7-00975-04	. . Contact	4
	7-00975-06	. . Contact	2
	7-00915-05	. . Ring Terminal	2
	7-08001-07	. . Cable Tie	2
7	3-07490-02	. Cap Housing	1
8	3-07490-04	. Cap Housing	1
9	7-00975-04	. Contact	5
10	7-00975-06	. Contact	3
11	7-00913-08	. Terminal Lug	2
12	7-00913-22	. Terminal Lug	1
13	7-00915-05	. Ring Terminal	3
14	7-00921-07	. Solderless Connector	1
15	3-08345-02	. Power Cord Assembly	1
16	7-02321-04	. Strain Relief	1
17	6-08873-01	. Circuit Board Assembly	1
18	4-07331-01	. Heat Sink and Power Transistor Assembly	1
	3-08343-01	. . Power Supply Heat Sink	1
	7-00308-07	. . Transistor (Darlington) (2N6055)	2
	2-13189-01	. . Insulator	2
	2-18342-01	. . Power Transistor Socket	2
	7-00755-04	. . Connector Housing	2
	7-00756-01	. . Post Contact	6
	7-00757-02	. . Keying Plug	2
19	7-01220-11	. Washer (Internal Lock)	1
20	7-00913-01	. Terminal Lug (Not Shown)	4
21	2-14086-02	. Straight Receptacle	1
22	2-50393-01	. Insulator (Not Shown)	2
23	2-18163-02	. Hole Plug	1
24	7-00734-21	. Breaker 220/240 (5A) (Not Shown)	2
25	7-00734-22	. Breaker 220/240 (6A)	1
26	2-18281-01	. Heat Sink Cover	1



# Mechanism Assembly Sheet 1

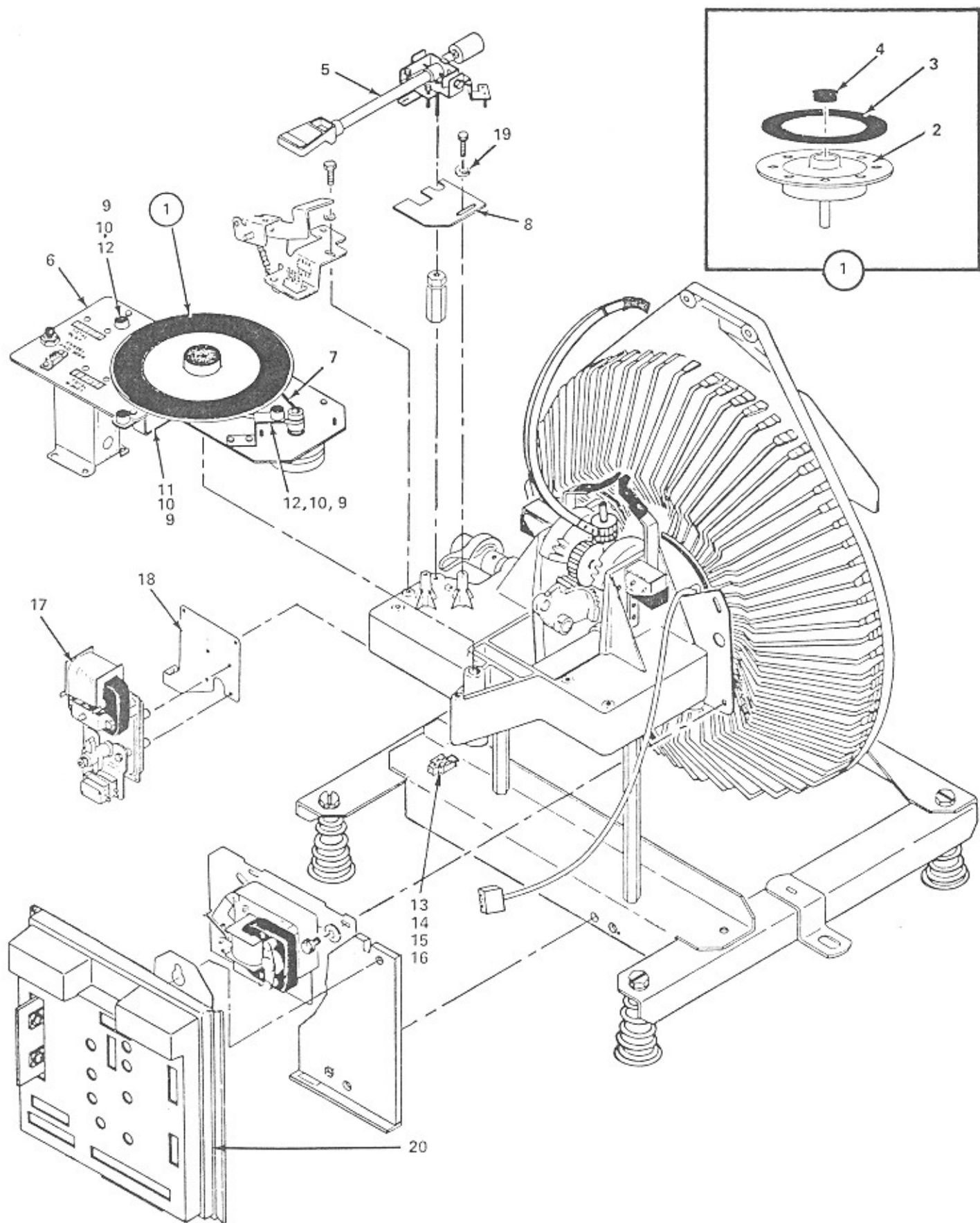


FIG. AND INDEX NO.	ROWE PART NO.	DESCRIPTION	QTY. PER ASSY
12-	6-08700-01	Mechanism Assembly (Figure 1, Item 34)(60 Hz)	REF
	6-08700-02	Mechanism Assembly (Figure 1, Item 34)(50 Hz)	1
1	3-07921-01	. Turntable Assembly	1
2	4-07215-01	. . Turntable & Shaft Assembly	1
3	3-05235-01	. . Turntable Face	1
4	2-18163-01	. . Hole Plug	1
5	4-07217-01	. Tone Arm & Pivot Assembly (See Figure 13)	1
6	3-07935-01	. Plate & Counter Assembly	1
	2-15818-01	. . Momentary Contact Switch	1
	3-07942-01	. . Brush Holder	1
	2-02182-01	. . Brush	1
	4-07220-01	. . Counter Mounting Plate	1
	2-18137-01	. . Counter Assembly	1
	2-15383-02	. . . Counter	1
	2-14418-02	. . . Electric Counter	4
	7-00921-04	. . . Solderless Connector	1
	7-00755-05	. . . Connector Housing	4
	7-00756-01	. . . Post Contact	1
	7-00757-02	. . . Keying Plug	1
7	3-07922-01	. Turntable Drive Belt	1
8	3-07938-02	. Tone Arm Cutoff Circuit Board Assembly	1
	4-07225-02	. . Printed Wiring Board	1
	2-10726-02	. . Reed Switch	1
	7-00760-02	. . Polarizing Wafer 90	1
	2-18181-01	. . Contact	2
	7-00770-01	. . Socket - Mini Spring	3
9	2-09330-04	. Accordion Rivet	3
10	2-18139-01	. Grommet	1
11	2-18122-01	. Gripper Bow Bracket (Front)	2
12	2-18121-01	. Gripper Bow Bracket (Side)	1
13	4-07224-01	. Mechanism Harness Assembly	1
	3-07490-05	. . Cap Housing (9 Ckt.)	1
	3-00795-01	. . Contact	7
	3-00795-03	. . Contact	2
	7-00755-02	. . Connector Housing	1
	7-00755-08	. . Connector Housing	1
	7-00755-10	. . Connector Housing	1
	7-00756-01	. . Post Contact	17
	7-00757-01	. . Keying Plug	1
	7-00757-02	. . Keying Plug	2
	7-00913-02	. . Terminal Lug	5
	7-00913-06	. . Terminal Lug	2
	7-00913-08	. . Terminal Lug	2
	7-00913-14	. . Terminal Lug	9
	7-00916-02	. . Spade Terminal Lug	1
	7-00921-07	. . Solderless Connector	1
	7-08001-07	. . Cable Tie	20
14	2-07545-01	. Clip	1
15	2-05545-01	. Cable Clip	1
16	7-00934-01	. Cable Clamp	1
17	4-07208-01	. Cam Switch & Motor Assembly (See Figure 15)	1
18	3-07907-01	. Motor Mounting Plate	1
19	7-01200-02	. Washer	1
20	4-07221-02	. Mechanism Control Unit	1
	3-07943-02	. . Mechanism Control Base	1
	2-17710-08	. . Insulating Pad	1
	2-17711-05	. . Insulating Base	1
	6-08708-02	. . Mechanism Control Circuit Board Assembly (See Schematic for Parts List)	1
	4-07231-02	. . Cover	1

# Mechanism Assembly Sheet 2

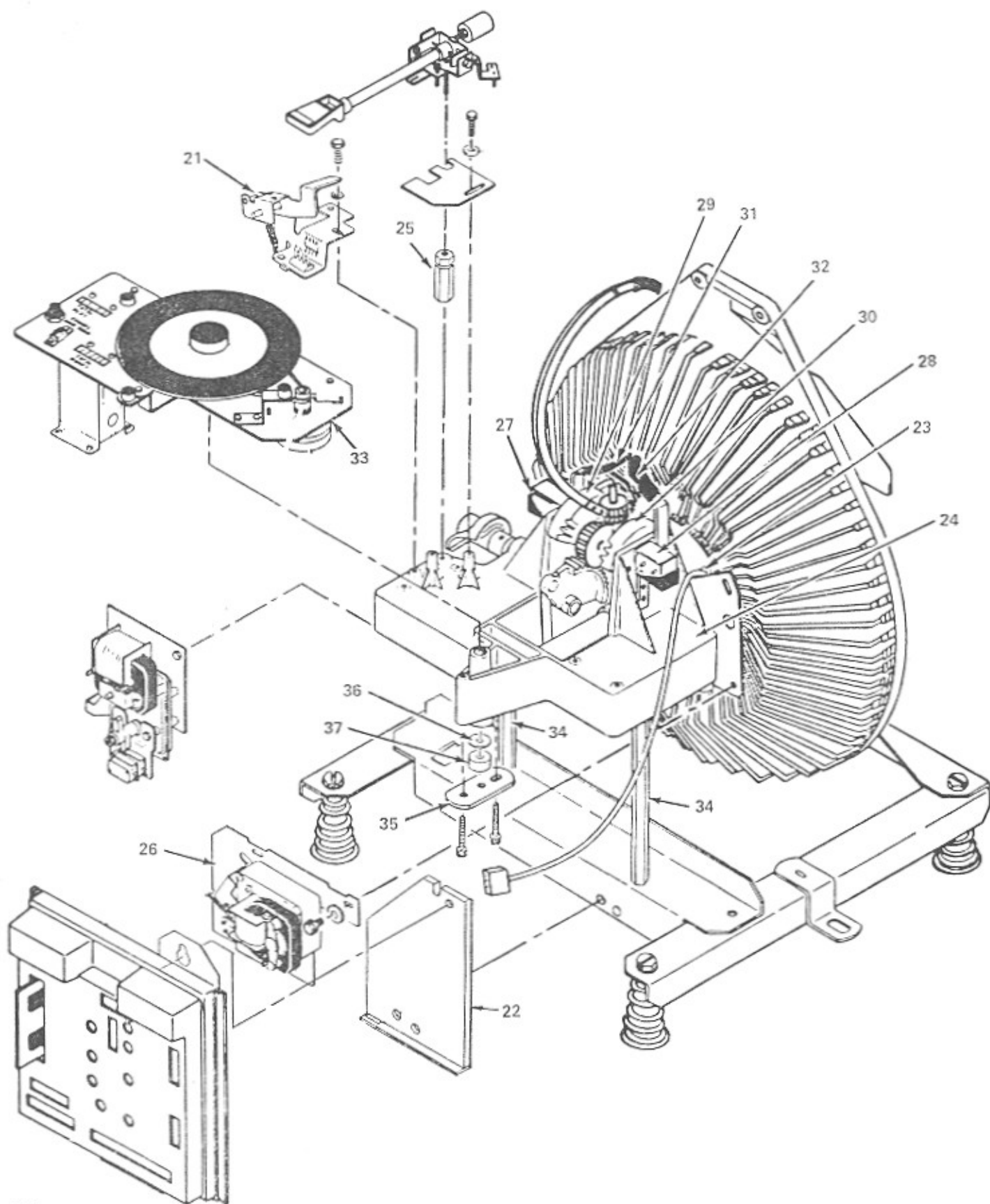


FIG. AND INDEX NO.	ROWE PART NO.	DESCRIPTION	QTY. PER ASSY
12-	6-08700-01	Mechanism Assembly (Continued)	REF
21	3-07926-01	. Lifting Lever & Bracket Assembly	1
	2-18158-01	. . Lifting Lever Bracket Assembly	1
	2-18159-01	. . Lifting Lever Assembly	1
	7-01430-05	. . Retaining Ring	1
	2-15760-01	. . Tension Spring	1
	2-18162-02	. . Grounding Clip	1
	7-00745-04	. . Chassis Mount Wafer (4 Ckt.)	1
	7-01111-06	. . Semi Tubular Rivet	1
22	3-08541-01	. Mechanism Control Mount	1
23	3-07927-01	. Optical Switch Assembly	1
	3-07945-01	. . Mounting Bracket	1
	3-07944-01	. . Optical Switch & Connector Assembly	1
	4-07226-01	. . . Optical Switch	1
	7-00755-05	. . . Connector Housing	1
	7-00757-02	. . . Keying Plug	1
	7-00756-01	. . . Contact Post	1
	7-08001-01	. . Cable Tie	2
24	7-03122-01	. Mechanism Name Plate	1
25	2-10708-02	. Bearing Assembly	1
	2-18157-01	. . Tone Arm Bearing	1
	2-08934-01	. . Ball Bearing	1
26	4-07219-01	. Sprag Assembly (See Figure 14)	1
27	2-18182-01	. Toggle Solenoid Assembly (L.H.)	1
28	2-18183-01	. Toggle Solenoid Assembly (R.H.)	1
29	3-07905-01	. Rotator Assembly (L.H.)	1
30	3-07906-01	. Rotator Assembly (R.H.)	1
31	2-18118-01	. Record Guide Assembly (L.H.)	1
32	2-18119-01	. Record guide Assembly (R.H.)	1
33	3-07917-01	. Turntable Motor & Plate Assembly (60 Hz)	1
	3-07917-02	. Turntable Motor & Plate Assembly (50 Hz)	1
	3-07918-01	. . Turntable Motor Mounting Plate	1
	2-18171-02	. . Turntable Belt Guide	1
	3-07919-07	. . Turntable Motor Assembly (60 Hz)	1
	3-07919-08	. . Turntable Motor Assembly (50 Hz)	1
	2-18178-01	. . Motor Pulley (45 Rpm) 60 Hz.	2
	2-18178-02	. . Motor Pulley (45 Rpm) 50 Hz.	1
34	2-18125-01	. Mech Support	1
35	2-18124-01	. Cap Plate	1
36	2-10364-01	. Thrust Bearing	1
37	2-10866-01	. Spacer Bearing	1

# Mechanism Assembly Sheet 3

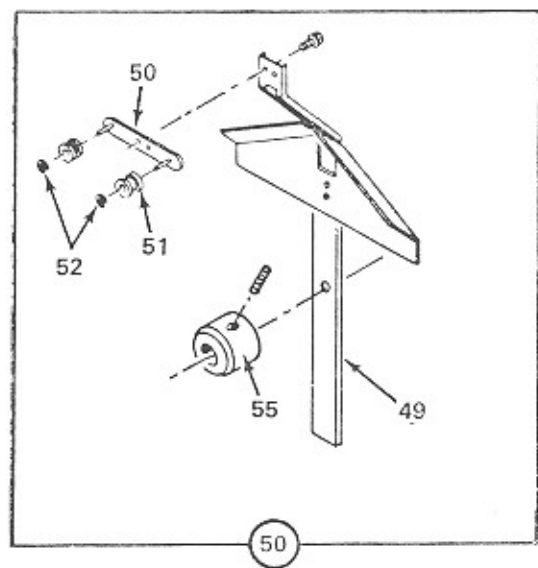
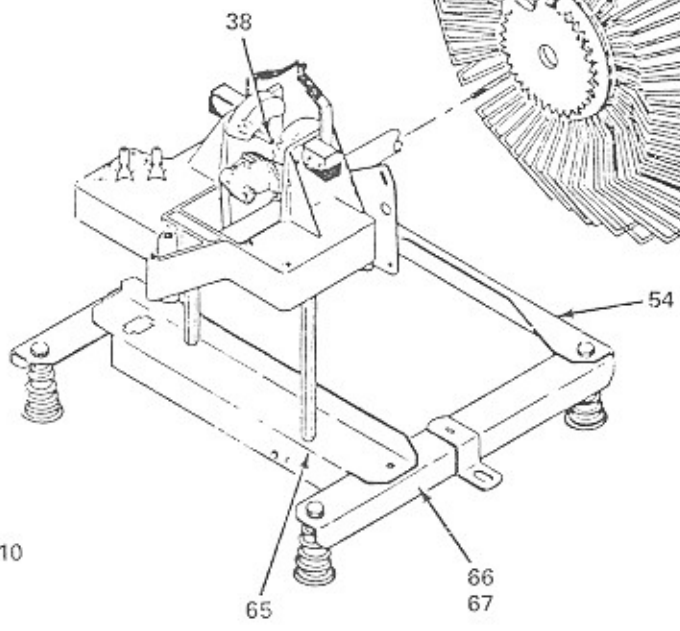
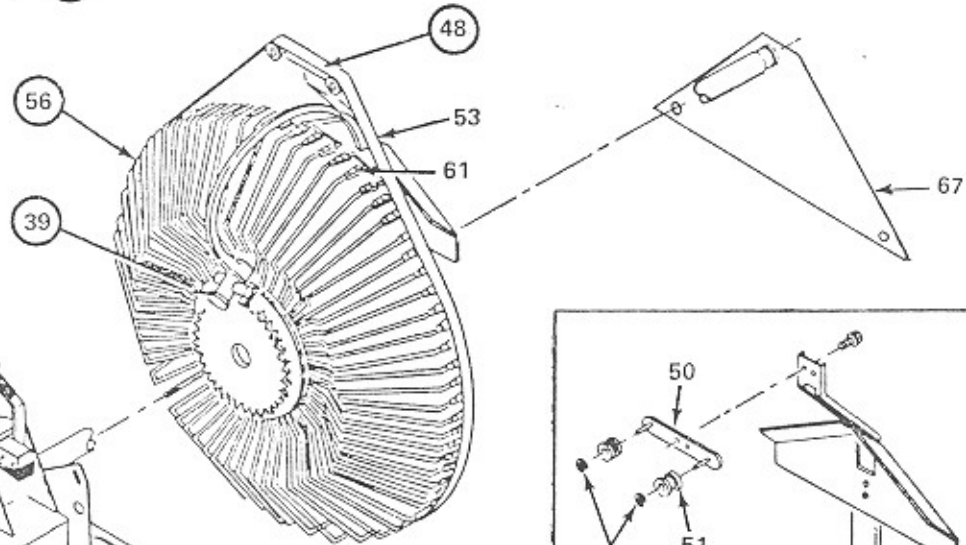
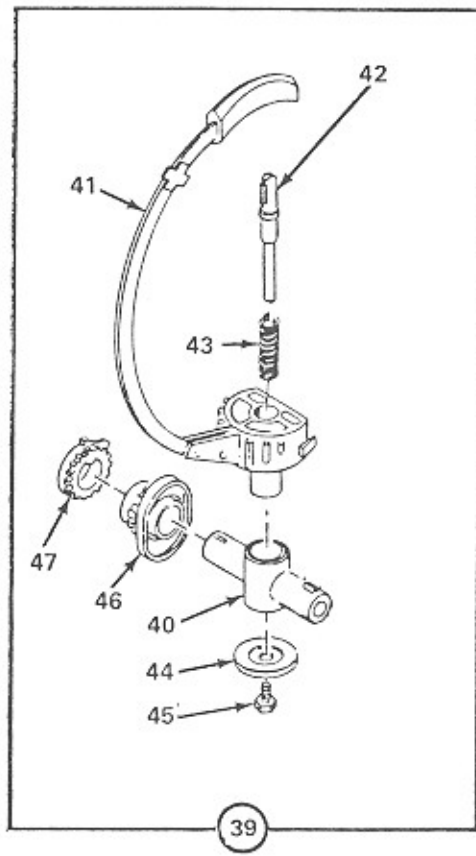
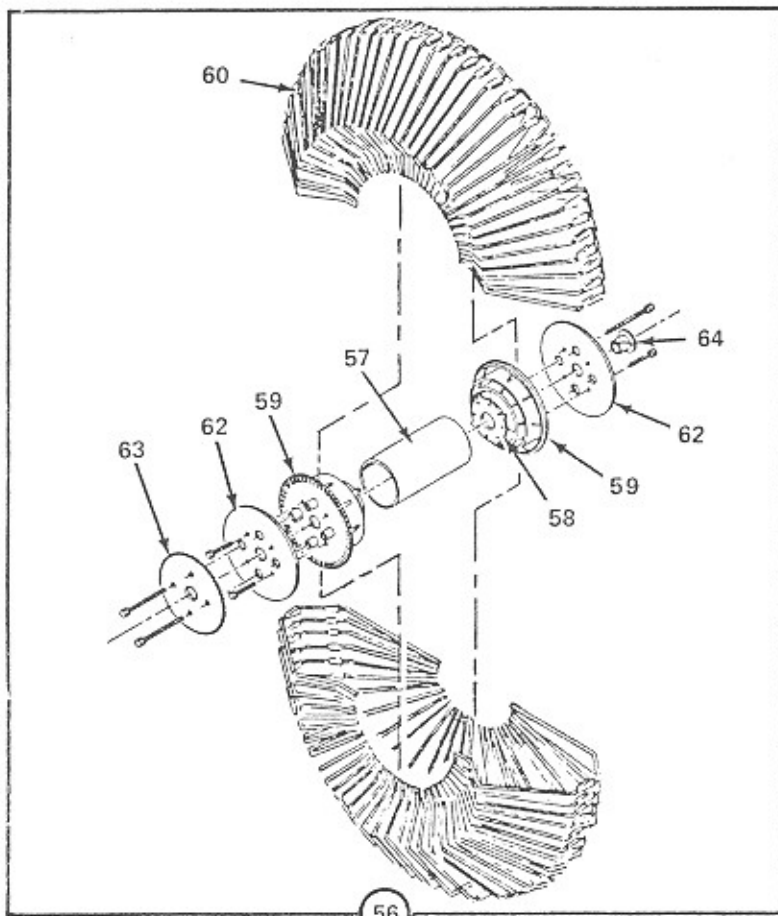


FIG. AND INDEX NO.	ROWE PART NO.	DESCRIPTION	QTY. PER ASSY
12-	6-08700-01	Mechanism Assembly (continued)	REF
38	2-10792-02	. Trunnion Pin	2
39	4-07207-01	. Gripper & Trunnion Assembly	1
40	3-07910-01	. . Trunnion	1
41	3-05197-02	. . Gripper Bow & Hub Assembly	1
42	2-10808-02	. . Inner Shoe Assembly	1
43	2-10811-01	. . Record Release Spring	1
44	2-18115-01	. . Cam Follower Assembly	1
45	2-18117-01	. . Lock Screw	1
46	4-07204-01	. . Cam Gear	1
47	4-07206-01	. . Trunnion Gear	1
48	4-07212-01	. Guide & Belt Support Assembly	1
49	4-07213-01	. . Gripper Bow Guide Assembly	1
50	2-10894-01	. . Roller Bracket Assembly	1
51	2-03843-01	. . Belt Roller	2
52	7-01430-03	. . Retaining Ring	2
53	2-18138-01	. Belt	1
54	3-07925-01	. Support Frame Rear Angle	1
55	2-18126-01	. Collar	1
56	6-08703-02	. Magazine Assembly	1
57	4-07200-01	. . Hub Spacer	1
58	3-07902-01	. . Hub Anchor Plate	2
59	6-08702-01	. . Magazine Hub	2
60	4-07201-01	. . Record Magazine Separator	100
61	4-07202-01	. . Belt Guide	100
62	3-07903-01	. . Cover Plate	2
63	3-07904-01	. . Magazine Gear	1
64	7-01460-01	. . Bearing	2
65	2-11013-01	. Lock Nut	1
66	3-07914-01	. Mechanism Support & Spring Assembly	1
	3-07915-01	. . Mech Support Assembly	4
	2-06272-01	. . Spring Support (Upper)	4
	2-06128-01	. . Mech Mounting Spring	1
67	4-07232-01	. Support Magazine	1

# Mechanism Assembly Sheet 4

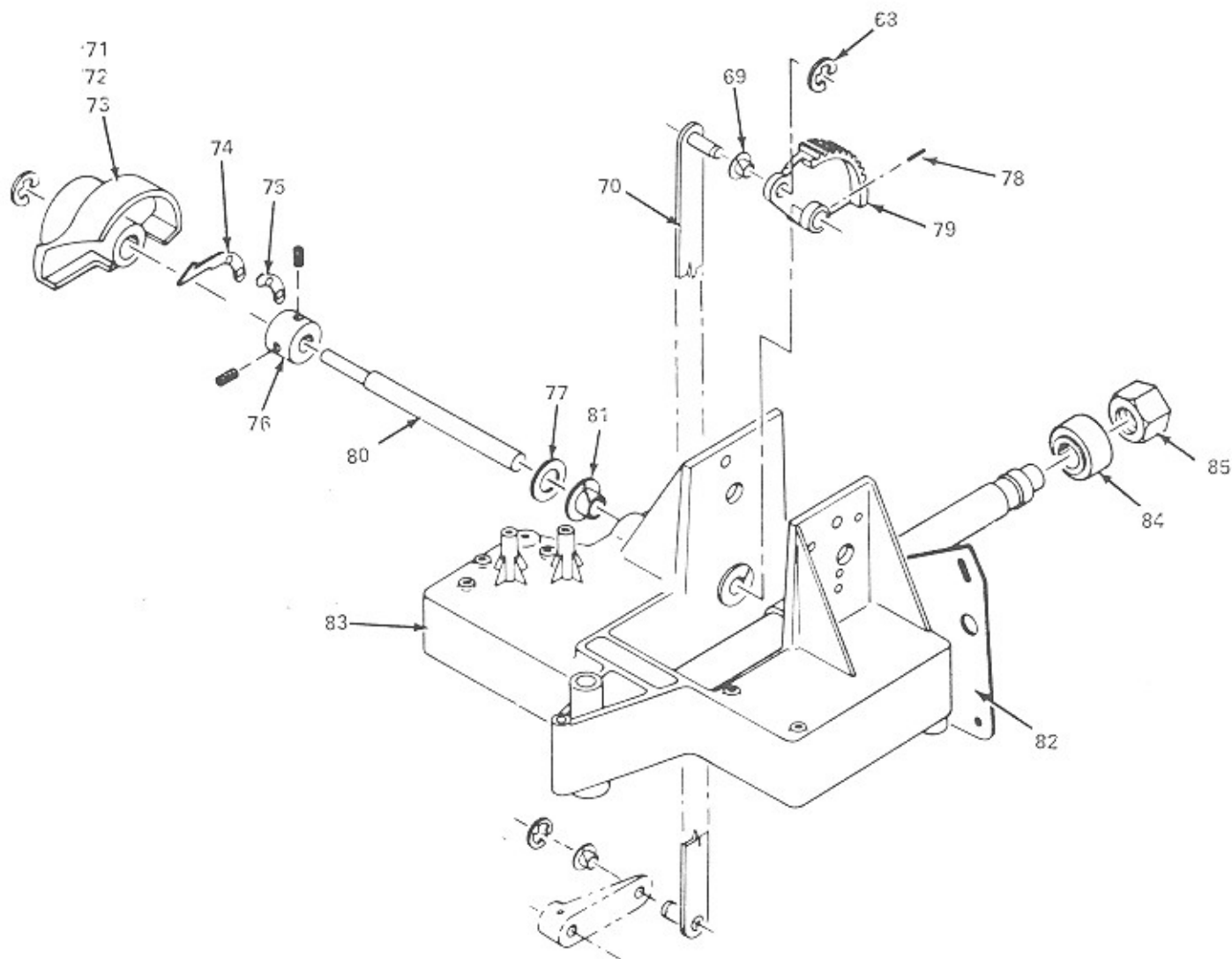


FIG. AND INDEX NO.	ROWE PART NO.	DESCRIPTION	QTY. PER ASSY
12-	6-08700-01	Mechanism Assembly (continued)	3
68	7-01430-04	. Retaining Ring	2
69	7-01460-04	. Bearing	1
70	2-18102-01	. Transfer Link Assembly	1
71	2-18134-01	. Tone Arm Cam Assembly	1
72	4-07222-01	. . Tone Arm Cam	2
73	2-18101-10	. . Threaded Insert	1
74	2-18148-01	. . Cam Spring	1
75	2-18149-01	. . Cam Spring Plate	1
76	2-18133-01	. Cam Collar	1
77	7-01225-33	. Bowed Washer	1
78	7-01130-19	. Roll Pin	1
79	4-07205-01	. Sector Gear	1
80	2-18132-01	. Tone Arm Drive Shaft	2
81	7-01460-05	. Bearing	1
82	4-07218-01	. Intermediate Mounting Plate	1
83	4-07211-01	. Base Assembly	1
	6-08707-01	. . Mechanism Base	1
	3-07913-01	. . Magazine Support Shaft	2
	2-10377-01	. . Bearing	1
84	2-51569-06	. Shoulder Washer	1
85	7-01301-09	. 9/16 x 18 Jam Nut	1



**FIGURE**  
**13**

# Tone Arm and Pivot Assembly

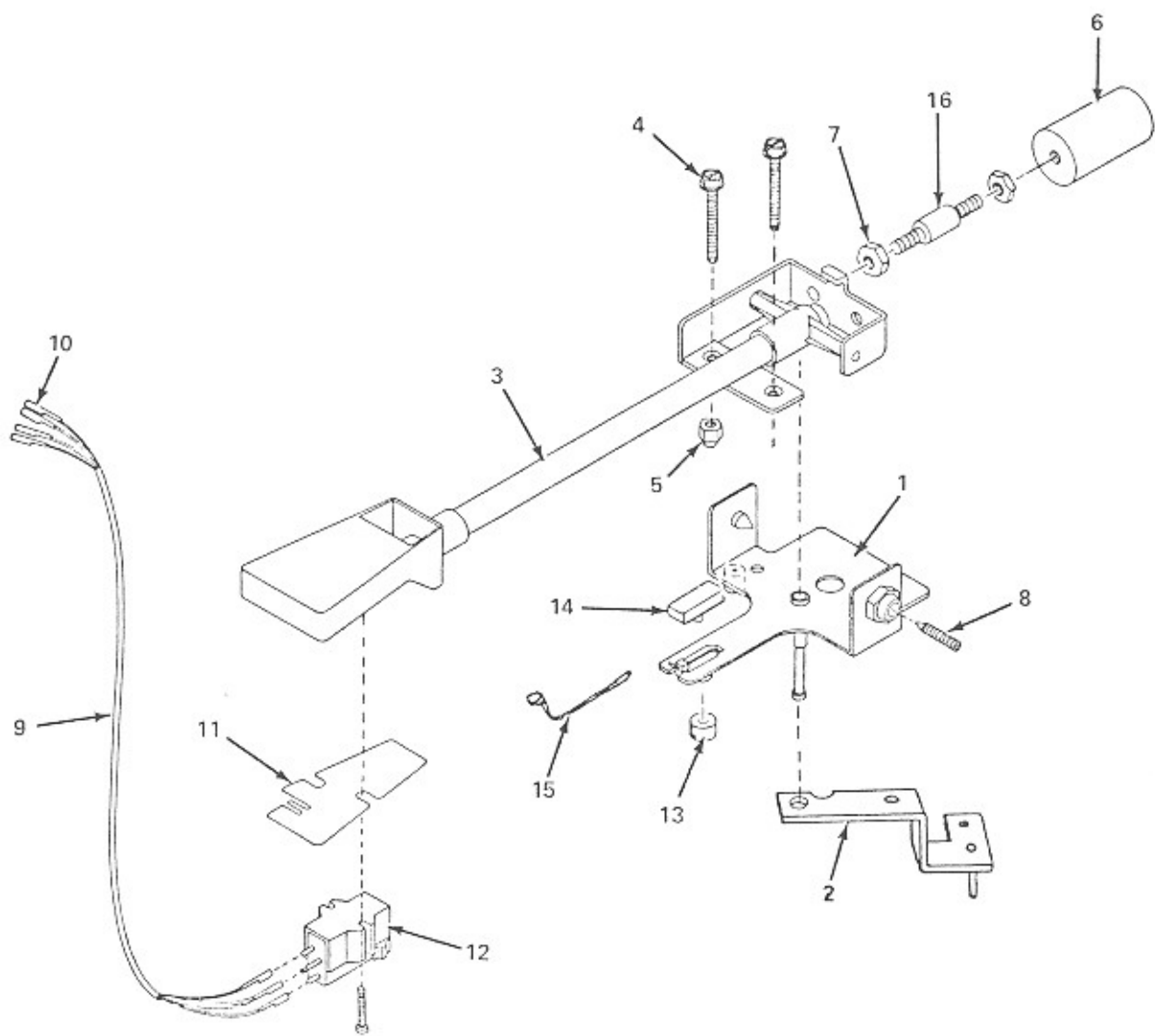


FIG. AND INDEX NO.	ROWE PART NO.	DESCRIPTION	QTY. PER ASSY
13-	4-07217-01	Tone Arm & Pivot Assembly (Figure 12, Item 5)	REF
1	2-18141-01	. Bracket & Shaft Assembly	1
2	2-18142-01	. Guide Plate Assembly	1
3	3-07928-01	. Tone Arm & Lever Assembly	1
4	2-65025-01	. Contact Screw	1
5	2-18140-02	. Self Locking Cap Nut	1
6	2-18143-02	. Counter Weight	1
7	7-01355-02	. Locknut	1
8	2-10712-01	. Pivot Screw	1
9	2-18144-01	. Tone Arm Cable Assembly	1
10	7-00927-10	. . Pin Receptacle	8
11	2-18130-01	. Tone Arm Shielding Clip	1
12	2-13011-01	. Stereo Phono Cartridge	1
	2-18340-01	. . Stylus Assembly	1
13	2-18147-01	. Magnet - Reed	1
14	2-18146-01	. Magnet Clip	1
15	7-08001-01	. Cable Tie	1
16	2-18177-01	. Vibration Isolator	1

**FIGURE**  
**14**

# Sprag Assembly

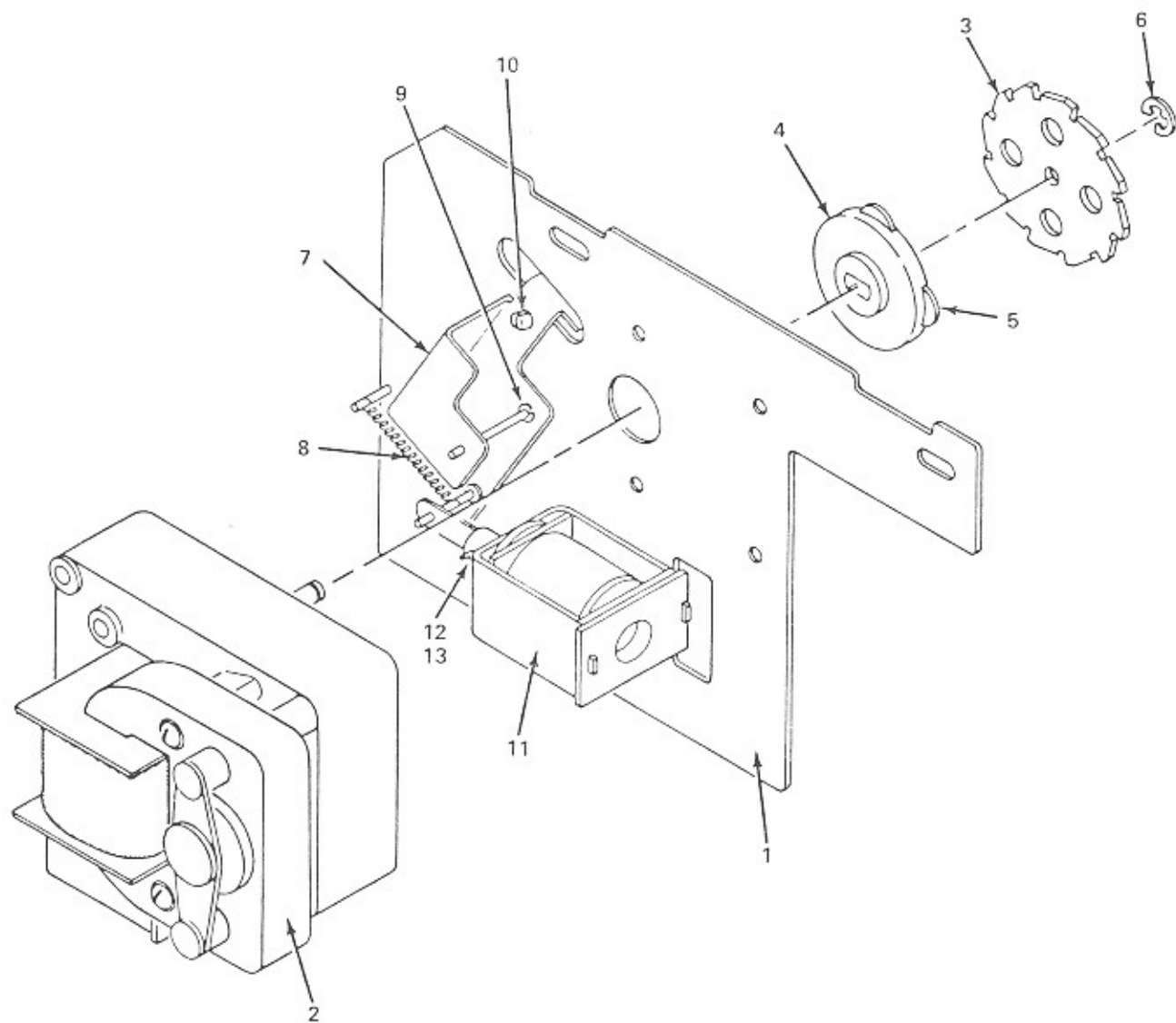


FIG. AND INDEX NO.	ROWE PART NO.	DESCRIPTION	QTY. PER ASSY
14	4-07219-01	Sprag Assembly (Figure 12, Item 26)	REF
1	3-07939-01	. Sprag Plate Assembly	1
2	4-07227-01	. Magazine Motor	1
3	4-07223-01	. Sprag Wheel	1
4	3-07933-01	. Sprag Wheel Hub	1
5	2-18161-01	. Stem Bushing	4
6	7-01430-03	. Retaining Ring	1
7	2-18160-01	. Sprag Lever Assembly	1
8	2-12562-01	. Tension Spring	1
9	7-01430-05	. Retaining Ring	1
10	2-51559-01	. Split Stem Bumper	2
11	2-11505-06	. Solenoid Assembly	1
12	2-10857-01	. Plunger Assembly	1
13	2-10849-02	. Plunger Stop	1

# Cam Switch And Motor Assembly

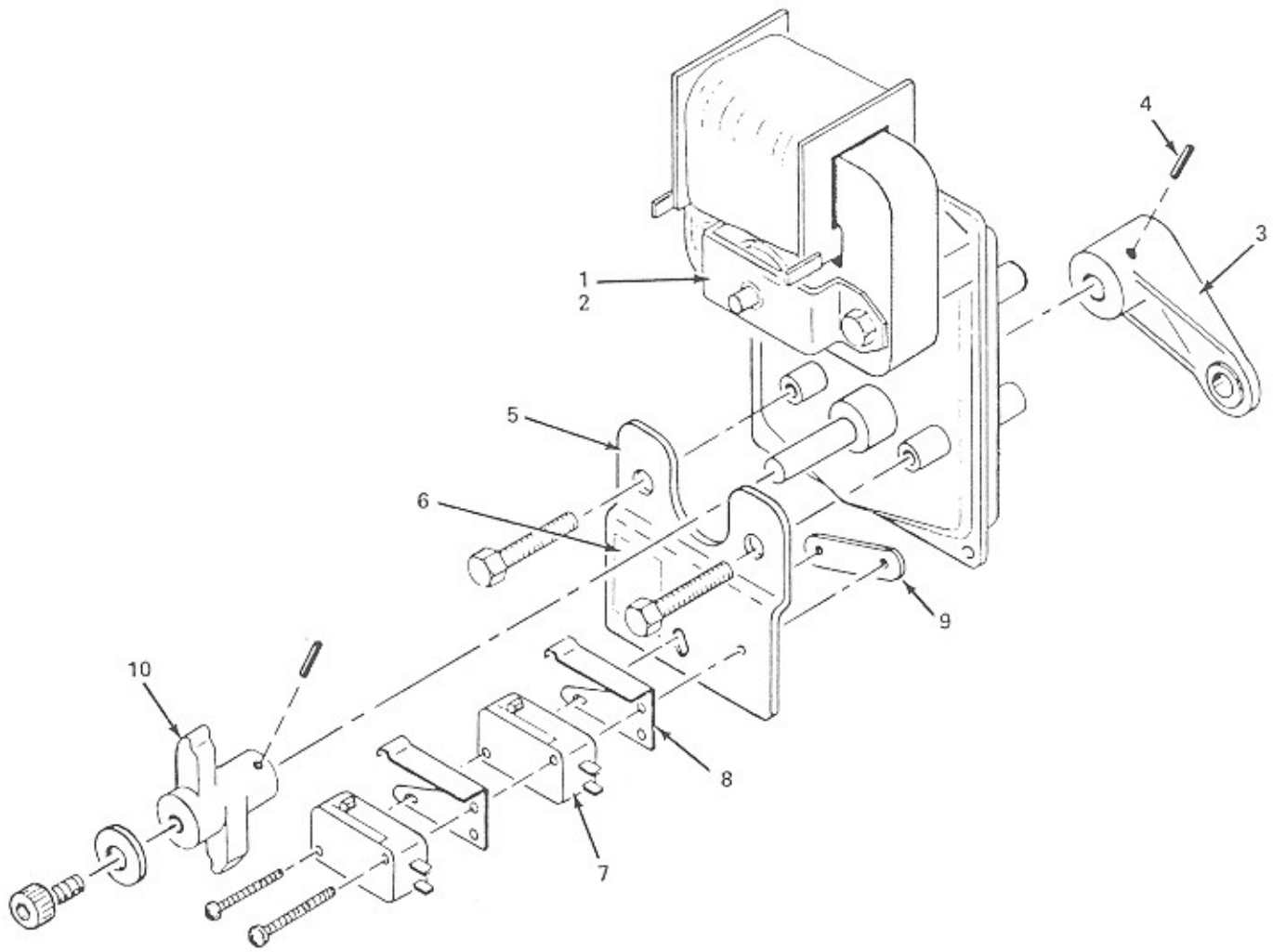


FIG. AND INDEX NO.	ROWE PART NO.	DESCRIPTION	QTY. PER ASSY
15-	4-07208-01	Cam Switch & Motor Assembly (Figure 12, Item 17)	REF
1	3-07908-01	. Motor & Crank Assembly	1
2	4-07209-01	. . Cam Motor	1
3	2-18104-01	. . Trunnion Crank	1
4	7-01131-16	. . Roll Pin	2
5	3-07909-01	. Switch Plate	1
6	2-18169-01	. Cam Switch Label	1
7	2-10731-01	. Switch	2
8	2-10829-01	. Switch Actuator	2
9	2-10830-01	. Twin Nut	1
10	3-07934-01	. Switch Cam	1