
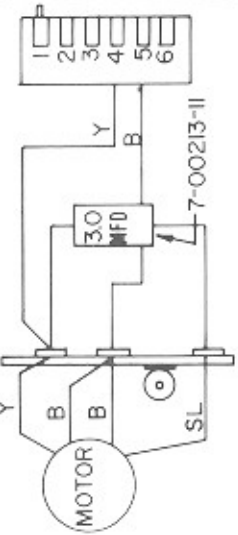
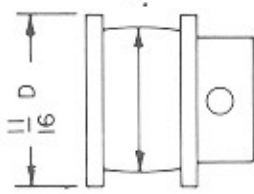
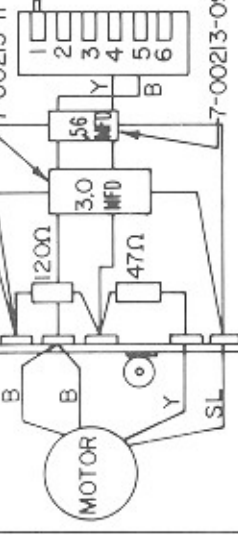
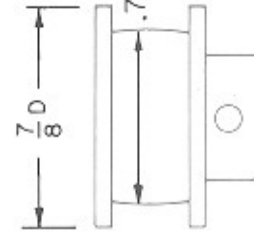


LOCATION OF FUSES AND CIRCUIT BREAKERS



TWO 5 AMP
AGC FUSES
(MOUNTED ON
POWER SUPPLY
CIRCUIT BOARD
UNDER CHASSIS)



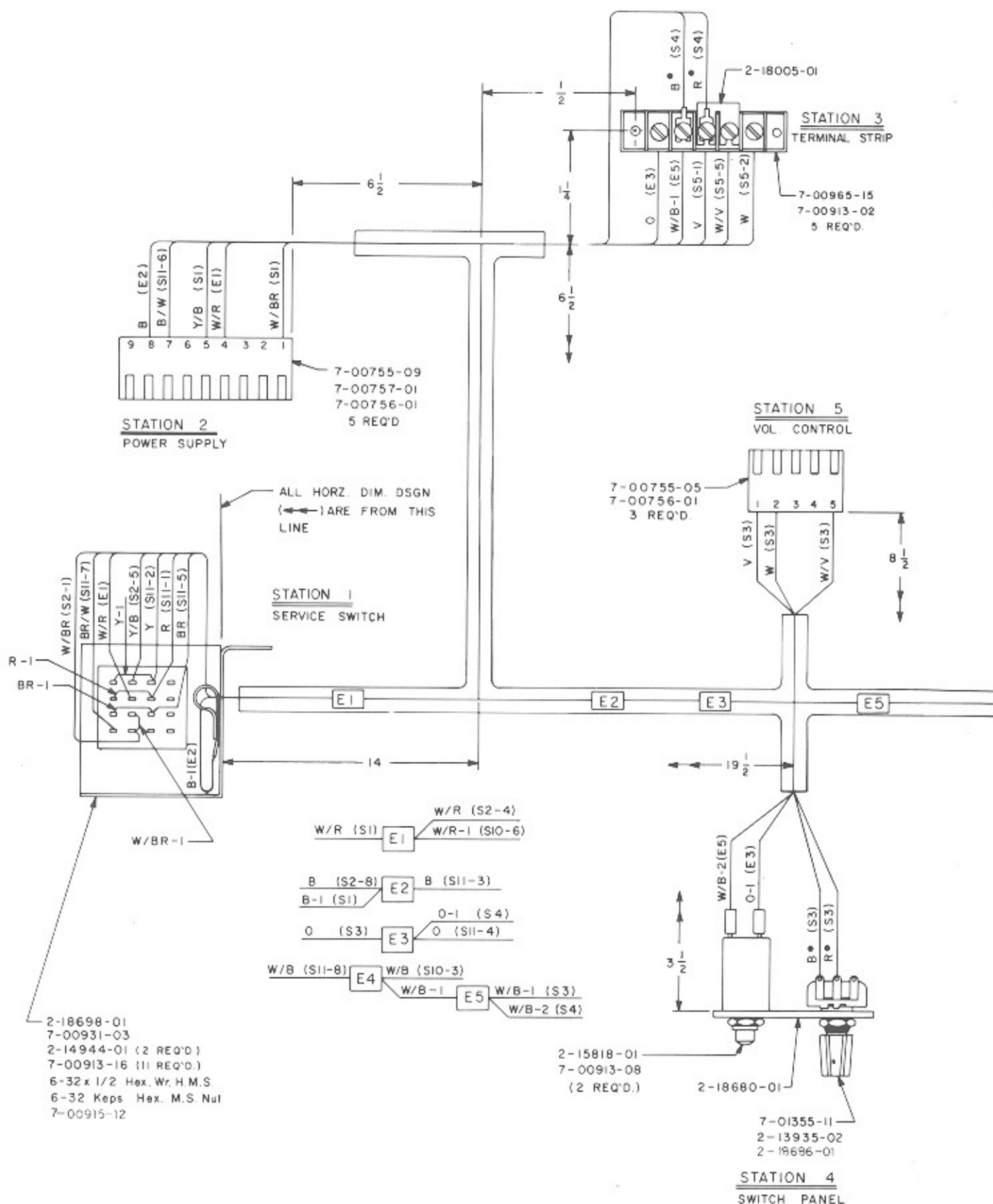
<p>TURNTABLE MOTOR: PART NUMBER AND IDENTIFYING FEATURES</p>  <p>3-07920-04, MFG. BY NORTH AMER. PHILIPS, LABELED A81743-M5, HAS FLAT BOTTOM COVER NO FLAT ON SHAFT.</p>	<p>60Hz MOTOR ASSEMBLY ACTUAL CAPACITORS SHOWN ARE TYPICAL. TOTAL CAP. VALUES MAY HAVE BEEN OBTAINED BY OTHER COMBINATIONS. CAPS. ARE 100V.</p>  <p>3-07919-07</p>	<p>60Hz</p>	<p>CLEAR ANODIZED ALUMINUM</p>  <p>T.T. MOTOR PULLEY 2-18178-01</p>
<p>50Hz MOTOR ASSEMBLY ACTUAL CAPACITORS SHOWN ARE TYPICAL. TOTAL CAP. VALUES MAY HAVE BEEN OBTAINED BY OTHER COMBINATIONS. CAPS. ARE 100V, RESISTORS 2W.</p>	 <p>3-07919-08</p>	<p>50Hz</p>	<p>RED ANODIZED ALUMINUM</p>  <p>T.T. MOTOR PULLEY 2-18178-02</p>

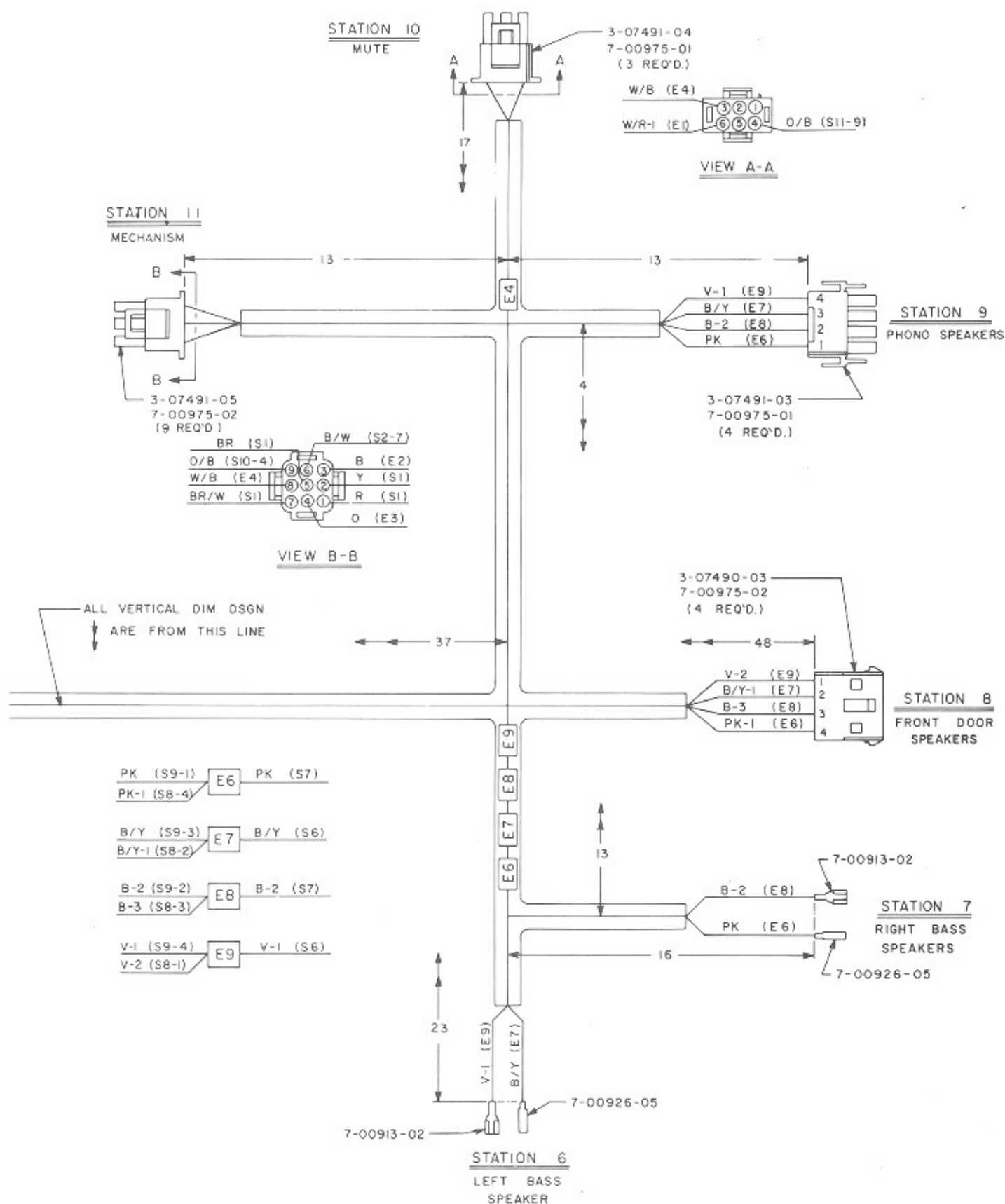
TURNTABLE MOTORS

COMPATIBILITY CHART

DESCRIPTION													
PART #	CHIP		ROM	CTI-2	CTI-3	R-84	R-85	R-86	R-87	RI-3	RI-4, RI-5	HPL	
CENTRAL CONTROL COMPUTER	6-08870-01	7-00390-01	NONE	-03 CHIP, NO FIFO	STD	NOTE A	NOTE A	NOTE A	NOTE A	NOTE A	NOTE A	NOTE A	
	6-08870-02	6-08988-01	7-00391-04	PICOP BACK, NO FIFO	STD	NOTE A	NOTE A	NOTE A	NOTE A	NOTE A	NOTE A	NOTE A	
	6-08870-04	7-00390-03	NONE	-03 CHIP, RI-3, FIFO	NOTE B,C	NOTE B,C	NOTE B,C	NOTE B,C	NOTE B,C	NOTE B,C	NOTE B,C	NOTE B,C	
	6-08870-05	6-08988-04	7-00391-07	PICOP BACK, RI-3, NO FIFO	NOTE B,C	NOTE B,C	NOTE B,C	NOTE B,C	NOTE B,C	NOTE B,C	NOTE B,C	NOTE B,C	
6-08870-06	7-00390-04	NONE	-04 CHIP, MASTER 3870	NOTE B,C	STD	NOTE B,C	STD	STD	STD	STD	STD	STD	
PRICE BOARD	6-08878-01	15 PLAY/COIN MAX. LIMITED LEVEL RATIO		STD	NOTE E	----	----	----	----	----	----	----	
	6-08878-02	15 PLAY/COIN MAX. LIMITED LEVEL RATIO		----	----	STD	NOTE E	NOTE E	NOTE E	NOTE E	NOTE E	NOTE E	
	6-08878-03	DIODES 353 & 354 ADDED, NOTE G		STD	STD	----	----	----	----	----	----	----	
	6-08878-04	DIODES 353 & 354 ADDED, NOTE G		----	----	NOTE F	----	STD	STD	NOTE F	NOTE F	STD	
6-08878-05				----	----	----	----	----	----	STD	STD	----	
WALLBOX INTER- FACE	6-07467-01	7-00390-02	NONE	WRD	STD	STD	STD	STD	STD	STD	STD	STD	
	6-07467-02	7-00390-02	NONE	WRA-WRC	STD	STD	STD	STD	STD	STD	STD	STD	
	6-07467-03	7-00390-02	NONE	WRD+WRU+UPI	STD	STD	STD	STD	STD	STD	STD	STD	
	2-66989-01	NONE		WRC P+ONO HARNESS	STD	STD	STD	STD	STD	STD	STD	STD	
AMPLIFIER	6-07439-05	125 WATT - INCLUDES OUTPUT TRANSFORMERS		NOTE J	STD	NOTE J	NOTE J	NOTE J	STD	----	OK	----	
	6-07439-04	125 WATT - INCLUDES OUTPUT TRANSFORMERS		NOTE J	NOTE J	NOTE J	NOTE J	STD	OK	----	OK	OK	
	6-07439-02	125 WATT - INCLUDES OUTPUT TRANSFORMERS		STD	STD	STD	STD	NOTE J	NOTE J	----	NOTE J	NOTE J	
	6-07439-03	125 WATT - KIT FOR RI-3 INCLUDES ADAPTORS		----	----	----	----	----	----	NOTE I	----	----	
	6-09166-01	50 WATT - RI-3 ONLY		----	----	----	----	----	----	STD	----	----	
	6-09189-01	50 WATT RI-4, RI-5		----	----	----	----	----	OK	NOTE J	----	----	
6-09189-02	50 WATT RI-4, RI-5		----	----	----	----	----	OK	NOTE U	----	----		
MECH ASS'Y	6-08700-01	-01 = 60 HZ -02 = 50 HZ		STD	STD	STD	STD	STD	STD	STD	STD	STD	
MECH CONTROL	4-07221-01	BOTTOM MOUNT SCREW TO MECH		STD	----	STD	NOTE A	----	----	NOTE K	NOTE K	NOTE A	
	4-07221-02	TOP MOUNT SCREW TO MECH		STD	STD	NOTE L	STD	STD	STD	STD	STD	STD	
POWER SUPPLY	4-07333-01	DOMESTIC 120V		STD	----	STD	STD	----	----	STD	----	----	
	4-65087-01	EXPORT		NOTE M	----	NOTE M	NOTE M	----	----	NOTE M	----	----	
	4-07706-01	DOMESTIC 120V		----	STD	----	----	STD	STD	STD	STD	STD	
	4-65092-01	EXPORT		----	NOTE N	----	NOTE N	NOTE N	NOTE N	NOTE N	NOTE N	NOTE N	
FLASHING LIGHT CONTROL	4-07169-02	CHASE PATTERN - 3 CIRCUITS ON, 3 OFF		----	----	STD	----	----	----	----	----	----	
	4-07501-01	CHASE PATTERN - 3 CIRCUITS ON, 3 OFF		----	----	----	STD	NOTE P	----	----	----	----	
	4-07501-02	CHASE PATTERN - 3 CIRCUITS ON, 3 OFF		----	----	----	NOTE P	STD	STD	----	----	----	
BA-5 BILL ACCEPTOR	2-66971-01	DOLLAR BILL ACCEPTOR KIT		STD	----	----	----	----	----	----	----	----	
	2-66971-03	DOLLAR BILL ACCEPTOR KIT		----	----	STD	----	NOTE Q	NOTE Q	----	----	----	
	2-66971-07	\$1 AND \$5 BILL ACCEPTOR KIT		----	----	STD	STD	NOTE Q	NOTE Q	----	----	----	
	2-66971-10	DOLLAR BILL ACCEPTOR KIT		----	----	NOTE R	NOTE R	STD	STD	----	----	----	
	2-66971-12	\$1 AND \$5 BILL ACCEPTOR KIT		----	----	NOTE R	NOTE R	STD	STD	----	----	----	
	2-67013-01	\$1 AND \$5 BILL ACCEPTOR KIT		----	STD	NOTE R	NOTE R	STD	STD	----	----	----	

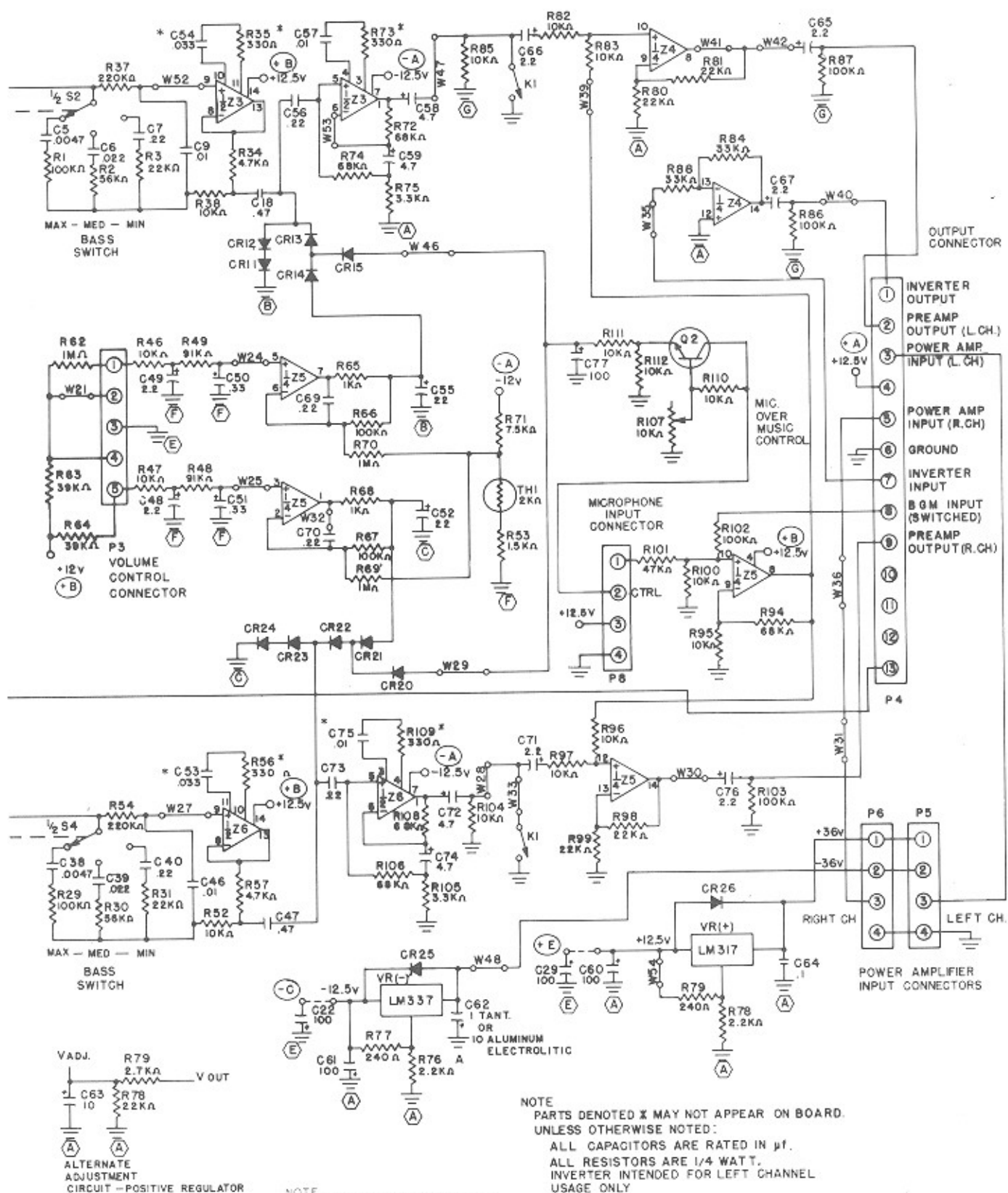
- A. OK - SAME FEATURES AS R-84.
 B. OK - SAME FEATURES AS R-85 IF -03 OR -04 PRICE 80.
 C. OK - SAME FEATURES AS R-84 IF -01 OR -02 PRICE 80.
 D. DIODES 353 & 354 NOT AVAILABLE. #334 GIVES 160 PLAYS.
 E. OK BUT SAME PRICE FEATURES AS R-84.
 F. OK BUT SAME PRICE FEATURES AS R-84 UNLESS COMPATIBLE COMPUTER BOARD USED.
 G. ADDED CR. LEVEL RATIO. ADDED 16 PLAY DIODE. CHANGED 120 TO 160 PLAY (LABELLED RI-3) = 6-08878-05.
 H. 6-08988-02 PICOP BACK ALTERNATE USING PROM.
 I. NEEDS SPECIAL TIME ARM CABLE AND VOL. CONTROL (INCLUDED IN KIT).
 J. NEEDS SPECIAL ADAPTOR HARNESS.
 K. OK REMOVE MECH MOUNT PLATE AND MOUNT TO BOTTOM FRAME.
 L. OK MOUNT TO BOTTOM BRACKET.
 M. 4-65087-01 = 120V. 4-65084-02 = 220V. 4-65087-03 = 240V.
 N. 4-65092-01 = 120V. 4-65092-02 = 220V. 4-65092-03 = 240V.
 O. INTERCHANGEABLE
 P. INTERCHANGEABLE
 Q. USE R-86 POWER HARNESS FOR BA-5. 3-50693-02
 R. USE R-85 POWER HARNESS FOR BA-5. 3-50693-01
 S. OK BUT NO LONGER IN PRODUCTION.
 T. INTERCHANGEABLE WITH 6-07439-04.
 U. STD AFTER DEC 1, 1982.
 V. ADD DIODE FOR 160 PLAY





RI-4 & RI-5 WIRING DIAGRAM
FOR ENG'G. EQUIV. DRWN. SEE 6-09164-02 [F]





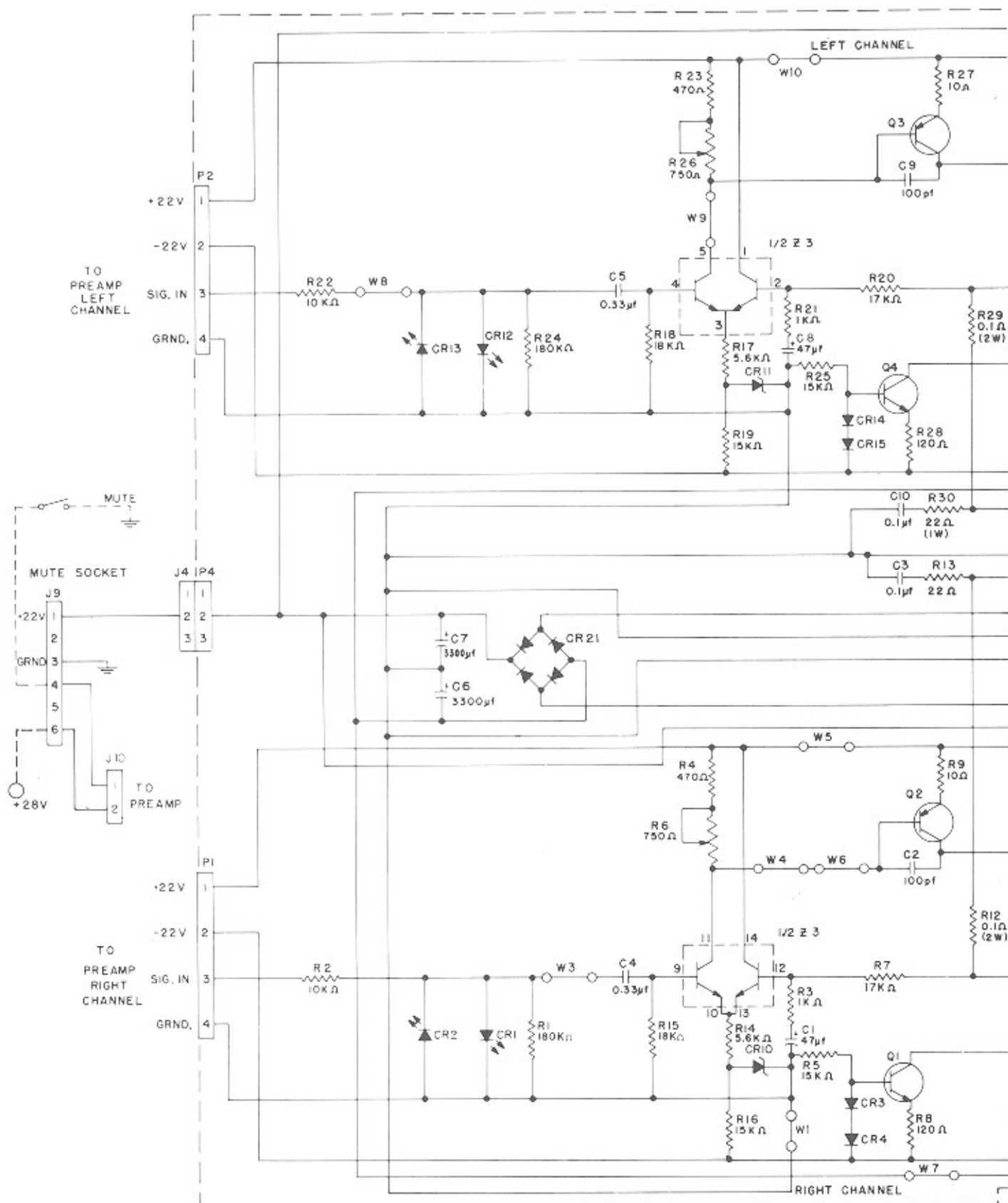
NOTE
CHECK YOUR PRE-AMP PART NO.
YOU MAY NEED A PREVIOUS SCHEMATIC
IF SO SEE SHOP MANUAL PAGE 78, 79.

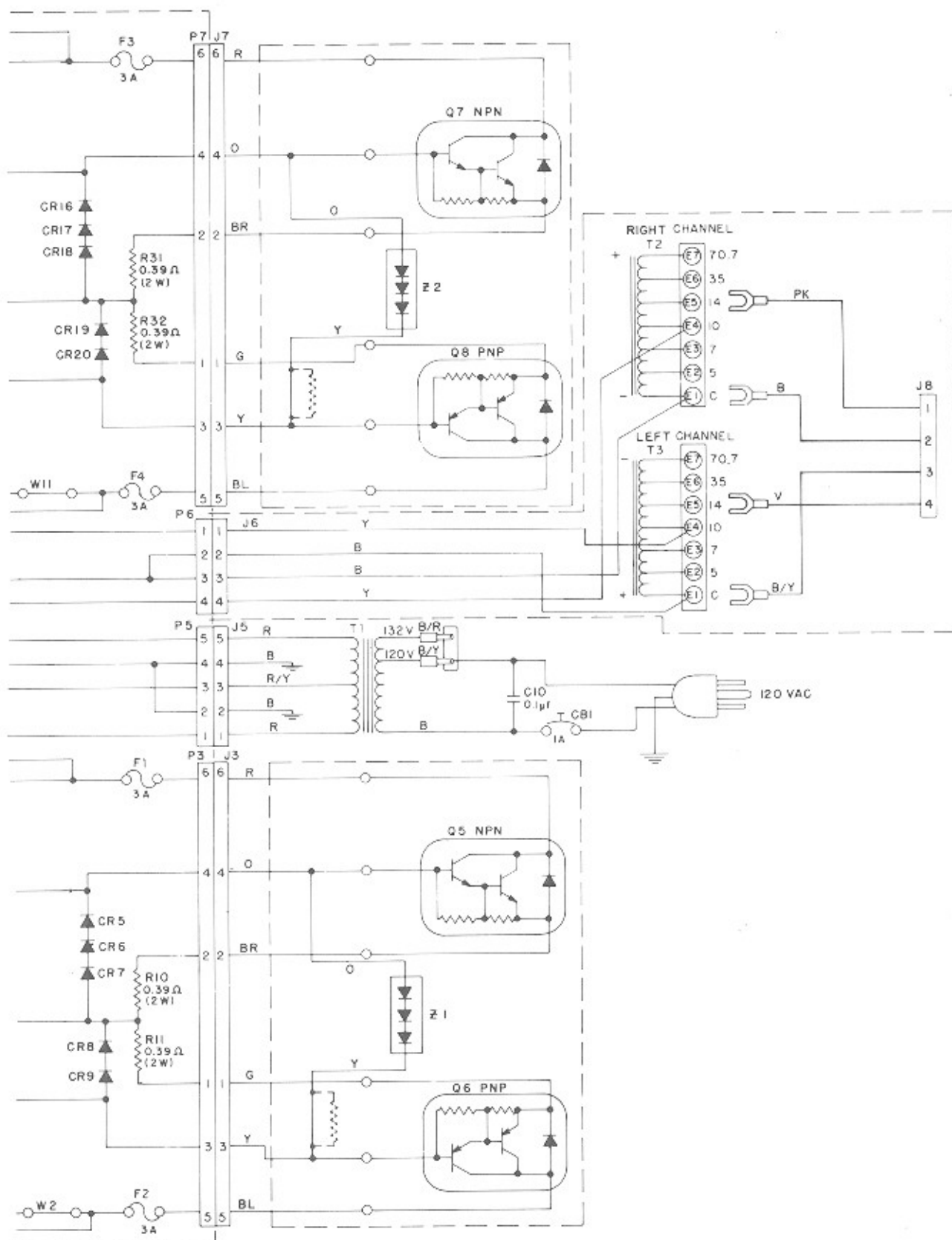
STEREO PREAMPLIFIER ASS'Y - SCHEMATIC
EQUIVANT ENG DWG 6-07925-01-Q-2 A

COMPONENT LIST

C1	Capacitor - Monolithic Ceramic	.0015 Mfd	7-00286-21
C2	Capacitor - Monolithic Ceramic	.0033 Mfd	7-00286-27
C3	Capacitor - Monolithic Ceramic	.012 Mfd	7-00286-38
C4	Capacitor - Mylar	.027 Mfd	7-00215-36
C5	Capacitor - Monolithic Ceramic	.0047 Mfd	7-00286-30
C6	Capacitor - Monolithic Ceramic	.022 Mfd	7-00286-41
C7	Capacitor - Mylar	.22 Mfd	7-00215-53
C8	Capacitor - Monolithic Ceramic	220 pf	7-00286-06
C9	Capacitor - Monolithic Ceramic	.01 Mfd	7-00286-37
C10	Capacitor - Mylar	.082 Mfd	7-00215-47
C11	Capacitor - Mylar	.027 Mfd	7-00215-35
C12	Not Used		
C13	Capacitor - Monolithic Ceramic	100 pf	7-00286-01
C14	Capacitor - Electrolytic	2.2 Mfd	7-00238-05
C15	Not Used		
C16	Capacitor - Electrolytic	4.7 Mfd	7-00238-06
C17	Capacitor - Electrolytic	2.2 Mfd	7-00238-05
C18	Capacitor - Mylar	.47 Mfd	7-00215-52
C19-C20	Capacitor - Electrolytic	2.2 Mfd	7-00238-05
C21-C22	Capacitor - Electrolytic	100 Mfd	7-00238-14
C23	Capacitor - Tantalum	6.8 Mfd	7-00251-20
C24	Capacitor - Monolithic Ceramic	.001 Mfd	7-00286-18
C25-C26	Capacitor - Mylar	.1 Mfd	7-00215-49
C27	Capacitor - Monolithic Ceramic	.001 Mfd	7-00286-18
C28	Capacitor - Tantalum	6.8 Mfd	7-00251-20
C29	Capacitor - Electrolytic	100 Mfd	7-00238-14
C30	Capacitor - Electrolytic	4.7 Mfd	7-00238-06
C31	Not Used		
C32-C33	Capacitor - Electrolytic	2.2 Mfd	7-00238-05
C34	Capacitor - Monolithic Ceramic	100 pf	7-00286-01
C35	Not Used		
C36	Capacitor - Mylar	.027 Mfd	7-00215-35
C37	Capacitor - Mylar	.082 Mfd	7-00215-47
C38	Capacitor - Monolithic Ceramic	.0047 Mfd	7-00286-30
C39	Capacitor - Monolithic Ceramic	.022 Mfd	7-00286-41
C40	Capacitor - Mylar	.22 Mfd	7-00215-53
C41	Capacitor - Monolithic Ceramic	220 pf	7-00286-06
C42	Capacitor - Monolithic Ceramic	.0015 Mfd	7-00286-21
C43	Capacitor - Monolithic Ceramic	.0033 Mfd	7-00286-27
C44	Capacitor - Monolithic Ceramic	.012 Mfd	7-00286-38
C45	Capacitor - Mylar	.027 Mfd	7-00215-36
C46	Capacitor - Monolithic Ceramic	.01 Mfd	7-00286-37
C47	Capacitor - Mylar	.47 Mfd	7-00215-52
C48-C49	Capacitor - Electrolytic	2.2 Mfd	7-00238-05
C50-C51	Capacitor - Tantalum	.33 Mfd	7-00251-19
C52	Capacitor - Electrolytic	22 Mfd	7-00238-10
C53-C54	Not Used		
C55	Capacitor - Electrolytic	22 Mfd	7-00238-10
C56	Capacitor - Mylar	.22 Mfd	7-00215-53
C57	Not Used		
C58-C59	Capacitor - Electrolytic	4.7 Mfd	7-00238-06
C60-C61	Capacitor - Electrolytic	100 Mfd	7-00238-14
C62	Capacitor - Electrolytic	10 Mfd	7-00238-08
C63	Not Used		
C64	Capacitor - Monolithic Ceramic	.1 Mfd	7-00285-14
C65-C67	Capacitor - Electrolytic	2.2 Mfd	7-00238-05
C68	Capacitor - Electrolytic	15 Mfd	7-00238-09
C69-C70	Capacitor - Monolithic Ceramic	.22 Mfd	7-00285-10
C71	Capacitor - Electrolytic	2.2 Mfd	7-00238-05
C72	Capacitor - Electrolytic	4.7 Mfd	7-00238-06
C73	Capacitor - Mylar	.22 Mfd	7-00215-53
C74	Capacitor - Electrolytic	4.7 Mfd	7-00238-06
C75	Not Used		
C76	Capacitor - Electrolytic	2.2 Mfd	7-00238-05
C77	Capacitor - Electrolytic	100 Mfd	7-00238-14
CR1-CR24	Diode - Silicon		7-00350-07
CR25-CR26	Diode - Silicon		7-00350-05
CR27	Diode - Silicon		7-00350-07
CR28-CR30	Diode - Silicon		7-00350-05
K1	Relay - Reed		7-00422-07
P1	Non-Polarized Wafer Ass'y (3Ckt)		7-00749-21
P2-P3	Non-Polarized Wafer Ass'y (5Ckt)		7-00749-23
P4	Non-Polarized Wafer Ass'y (13Ckt)		7-00749-31
P5-P6	P. C. Bd. Connector - Top Entry (4Ckt)		7-00748-02
P7	Polarized Wafer Ass'y (2Ckt)		7-00750-02
P8	Non-Polarized Wafer Ass'y (5Ckt)		7-00749-23
Q1	Transistor - Silicon PNP		7-00301-04
Q2	Transistor - Silicon NPN		7-00300-08
R1	Resistor - Carbon (1/4W - 5%)	100K	7-9901-104
R2	Resistor - Carbon (1/4W - 5%)	56K	7-9901-563
R3	Resistor - Carbon (1/4W - 5%)	22K	7-9901-223
R4	Resistor - Carbon (1/4W - 5%)	100K	7-9901-104
R5	Resistor - Carbon (1/4W - 5%)	150K	7-9901-154
R6	Resistor - Carbon (1/4W - 5%)	1.8K	7-9901-182
R7	Resistor - Carbon (1/4W - 5%)	33K	7-9901-333
R8	Resistor - Carbon (1/4W - 5%)	56K	7-9901-563
R9	Resistor - Carbon (1/4W - 5%)	100K	7-9901-104
R10	Resistor - Carbon (1/4W - 5%)	2.7K	7-9901-272
R11-R12	Not Used		
R13	Resistor - Carbon (1/4W - 5%)	1.8K	7-9901-182

R14	Resistor - Carbon (1/4W - 5%)	330 Ohm	7-9901-331
R15	Resistor - Carbon (1/4W - 5%)	33K	7-9901-333
R16	Resistor - Carbon (1/4W - 5%)	47K	7-9901-473
R17	Potentiometer	2K	7-00400-12
R18	Resistor - Carbon (1/4W - 5%)	47K	7-9901-473
R19	Resistor - Carbon (1/4W - 5%)	330 Ohm	7-9901-331
R20	Resistor - Carbon (1/4W - 5%)	33K	7-9901-333
R21	Resistor - Carbon (1/4W - 5%)	1.8K	7-9901-182
R22	Not Used		
R23	Resistor - Carbon (1/4W - 5%)	56K	7-9901-563
R24	Resistor - Carbon (1/4W - 5%)	100K	7-9901-104
R25	Not Used		
R26	Resistor - Carbon (1/4W - 5%)	2.7K	7-9901-272
R27	Resistor - Carbon (1/4W - 5%)	33K	7-9901-333
R28	Resistor - Carbon (1/4W - 5%)	1.8K	7-9901-182
R29	Resistor - Carbon (1/4W - 5%)	100K	7-9901-104
R30	Resistor - Carbon (1/4W - 5%)	56K	7-9901-563
R31	Resistor - Carbon (1/4W - 5%)	22K	7-9901-223
R32	Resistor - Carbon (1/4W - 5%)	100K	7-9901-104
R33	Resistor - Carbon (1/4W - 5%)	150K	7-9901-154
R34	Resistor - Carbon (1/4W - 5%)	4.7K	7-9901-472
R35	Not Used		
R36	Resistor - Carbon (1/4W - 5%)	15K	7-9901-153
R37	Resistor - Carbon (1/4W - 5%)	220K	7-9901-224
R38	Resistor - Carbon (1/4W - 5%)	10K	7-9901-103
R39-R40	Resistor - Carbon (1/4W - 5%)	36K	7-9901-363
R41-R42	Resistor - Carbon (1/4W - 5%)	22K	7-9901-223
R43	Resistor - Carbon (1/4W - 5%)	10K	7-9901-103
R44	Resistor - Carbon (1/4W - 5%)	4.7M	7-9901-475
R45	Resistor - Carbon (1/4W - 5%)	100K	7-9901-104
R46-R47	Resistor - Carbon (1/4W - 5%)	10K	7-9901-103
R48-R49	Resistor - Carbon (1/4W - 5%)	91K	7-9901-913
R50-R51	Resistor - Carbon (1/4W - 5%)	36K	7-9901-363
R52	Resistor - Carbon (1/4W - 5%)	10K	7-9901-103
R53	Resistor - Carbon (1/4W - 5%)	1.5K	7-9901-152
R54	Resistor - Carbon (1/4W - 5%)	220K	7-9901-224
R55	Resistor - Carbon (1/4W - 5%)	15K	7-9901-153
R56	Not Used		
R57	Resistor - Carbon (1/4W - 5%)	4.7K	7-9901-472
R58-R59	Resistor - Carbon (1/4W - 5%)	330K	7-9901-334
R60	Resistor - Carbon (1/4W - 5%)	22K	7-9901-223
R61	Resistor - Carbon (1/4W - 5%)	91K	7-9901-913
R62	Resistor - Carbon (1/4W - 5%)	1M	7-9901-105
R63-R64	Resistor - Carbon (1/4W - 5%)	39K	7-9901-393
R65	Resistor - Carbon (1/4W - 5%)	1K	7-9901-102
R66-R67	Resistor - Carbon (1/4W - 5%)	100K	7-9901-104
R68	Resistor - Carbon (1/4W - 5%)	1K	7-9901-102
R69-R70	Resistor - Carbon (1/4W - 5%)	1M	7-9901-105
R71	Resistor - Carbon (1/4W - 5%)	2.5K	7-9901-252
R72	Resistor - Carbon (1/4W - 5%)	68K	7-9901-683
R73	Not Used		
R74	Resistor - Carbon (1/4W - 5%)	68K	7-9901-683
R75	Resistor - Carbon (1/4W - 5%)	3.3K	7-9901-332
R76	Resistor - Carbon (1/4W - 5%)	2.2K	7-9901-222
R77	Resistor - Carbon (1/4W - 5%)	240 Ohm	7-9901-241
R78	Resistor - Carbon (1/4W - 5%)	2.2K	7-9901-222
R79	Resistor - Carbon (1/4W - 5%)	240 Ohm	7-9901-241
R80-R81	Resistor - Carbon (1/4W - 5%)	22K	7-9901-223
R82-R83	Resistor - Carbon (1/4W - 5%)	10K	7-9901-103
R84	Resistor - Carbon (1/4W - 5%)	33K	7-9901-333
R85	Resistor - Carbon (1/4W - 5%)	10K	7-9901-103
R86-R87	Resistor - Carbon (1/4W - 5%)	100K	7-9901-104
R88	Resistor - Carbon (1/4W - 5%)	33K	7-9901-333
R89	Resistor - Carbon (1/4W - 5%)	47K	7-9901-473
R90	Resistor - Carbon (1/4W - 5%)	6.8K	7-9901-682
R91	Resistor - Carbon (1/4W - 5%)	3.2K	7-9901-322
R92	Resistor - Carbon (1/4W - 5%)	1K	7-9901-102
R93	Resistor - Carbon (1/4W - 5%)	10K	7-9901-103
R94	Resistor - Carbon (1/4W - 5%)	68K	7-9901-683
R95-R97	Resistor - Carbon (1/4W - 5%)	10K	7-9901-103
R98-R99	Resistor - Carbon (1/4W - 5%)	22K	7-9901-223
R100	Resistor - Carbon (1/4W - 5%)	10K	7-9901-103
R101	Resistor - Carbon (1/4W - 5%)	47K	7-9901-473
R102-R103	Resistor - Carbon (1/4W - 5%)	100K	7-9901-104
R104	Resistor - Carbon (1/4W - 5%)	10K	7-9901-103
R105	Resistor - Carbon (1/4W - 5%)	3.3K	7-9901-332
R106	Resistor - Carbon (1/4W - 5%)	68K	7-9901-683
R107	Potentiometer	10K	7-00400-14
R108	Resistor - Carbon (1/4W - 5%)	68K	7-9901-683
R109	Not Used		
R110-R112	Resistor - Carbon (1/4W - 5%)	10K	7-9901-103
S1-S2	Switch - Slide		3-07862-03
S3	Switch - Slide		3-07862-02
S4-S5	Switch - Slide		3-07862-03
TH1	Thermistor		7-00370-02
VR+	Voltage Regulator - Positive		7-00365-07
VR-	Voltage Regulator - Negative		7-00365-08
Z1-Z3	IC - Stereo Preamplifier		3-08002-06
Z4-Z5	IC - Quad Op Amp		3-08002-15
Z6	IC - Stereo Preamplifier		3-08002-06
W1-W56	Jumper - Bare Wire		0-05039-00





POWER AMPLIFIER (50 WATT)
EQUIVALENT ENG DWG 6-09190-02-Q-2 (A)

COMPONENT LIST

C1	Capacitor - Electrolytic	47 Mfd/35V	7-00238-12
C2	Capacitor - Ceramic	100 pF/50V	7-00286-01
C3	Capacitor - Ceramic	0.1 Mfd/50V	7-00285-14
C4-C5	Capacitor - Tantalum	0.33 Mfd/35V	7-00251-19
C6-C7	Capacitor - Electrolytic	3300 Mfd/35V	7-00235-13
C8	Capacitor - Electrolytic	47 Mfd/35V	7-00238-12
C9	Capacitor - Ceramic	100 pF/50V	7-00286-01
C10	Capacitor - Ceramic	0.1 Mfd/50V	7-00285-14
CR1-CR2	Diode - Light Emitting		7-00353-03
CR3-CR4	Diode - Silicon - (Signal)		7-00350-07
CR5-CR9	Diode - Silicon - (1 Amp)		7-00350-05
CR10-CR11	Diode - Zener		7-00355-14
CR12-CR13	Diode - Light Emitting		7-00353-03
CR14-CR15	Diode - Silicon - (Signal)		7-00350-07
CR16-CR20	Diode - Silicon - (1 Amp)		7-00350-05
CR21	Diode - Bridge Rectifier		2-18225-03
F1-F4	Fuse - 3A		7-00720-08
P1-P2	Non-Polarizing Wafer Ass'y - 4 Pin		7-00749-04
P3	Polarizing Wafer Ass'y - 6 Pin		7-00750-06
P4	Polarizing Wafer Ass'y - 3 Pin		7-00750-03
P5	Polarizing Wafer Ass'y - 5 Pin		7-00750-05
P6	Polarizing Wafer Ass'y - 4 Pin		7-00750-04
P7	Polarizing Wafer Ass'y - 6 Pin		7-00750-06
Q1	Transistor - NPN		7-00300-08
Q2-Q3	Transistor - PNP		7-00301-04
Q4	Transistor - NPN		7-00300-08
R1	Resistor - Carbon (1/4W - 5%)	180K	7-9901-184
R2	Resistor - Carbon (1/4W - 5%)	10K	7-9901-103
R3	Resistor - Carbon (1/4W - 5%)	1K	7-9901-102
R4	Resistor - Carbon (1/4W - 5%)	470 Ohm	7-9901-471
R5	Resistor - Carbon (1/4W - 5%)	15K	7-9901-153
R6	Potentiometer	750 Ohm	7-00400-03
R7	Resistor - (1/4W - 5%)	18K	7-9901-183
R8	Resistor - Carbon (1/4W - 5%)	120 Ohm	7-9901-121
R9	Resistor - Carbon (1/4W - 5%)	10 Ohm	7-9901-100
R10-R11	Resistor - Wire Wound (2W)	0.39 Ohm	7-00113-19
R12	Resistor - Wire Wound (2W)	0.1 Ohm	7-00126-02
R13	Resistor - Carbon (1W)	22 Ohm	7-00108-16
R14	Resistor - Carbon (1/4W - 5%)	5.6K	7-9901-562
R15	Resistor - Carbon (1/4W - 5%)	18K	7-9901-183
R16	Resistor - Carbon (1/4W - 5%)	1.5K	7-9901-152
R17	Resistor - Carbon (1/4W - 5%)	5.6K	7-9901-562
R18	Resistor - Carbon (1/4W - 5%)	18K	7-9901-183
R19	Resistor - Carbon (1/4W - 5%)	1.5K	7-9901-152
R20	Resistor - Carbon (1/4W - 5%)	18K	7-9901-183
R21	Resistor - Carbon (1/4W - 5%)	1K	7-9901-102
R22	Resistor - Carbon (1/4W - 5%)	10K	7-9901-103
R23	Resistor - Carbon (1/4W - 5%)	470 Ohm	7-9901-471
R24	Resistor - Carbon (1/4W - 5%)	180K	7-9901-184
R25	Resistor - Carbon (1/4W - 5%)	15K	7-9901-153
R26	Potentiometer	750 Ohm	7-00400-03
R27	Resistor - Carbon (1/4W - 5%)	10 Ohm	7-9901-100
R28	Resistor - Carbon (1/4W - 5%)	120 Ohm	7-9901-121
R29	Resistor - Wire Wound	0.1 Ohm	7-00126-02
R30	Resistor - Carbon	22 Ohm	7-00108-16
R31-R32	Resistor - Wire Wound	0.39 Ohm	7-00113-19
W1-W11	Jumper - Bare Wire		0-05039-00
Z1	I.C. - Transistor Array		3-08002-12

