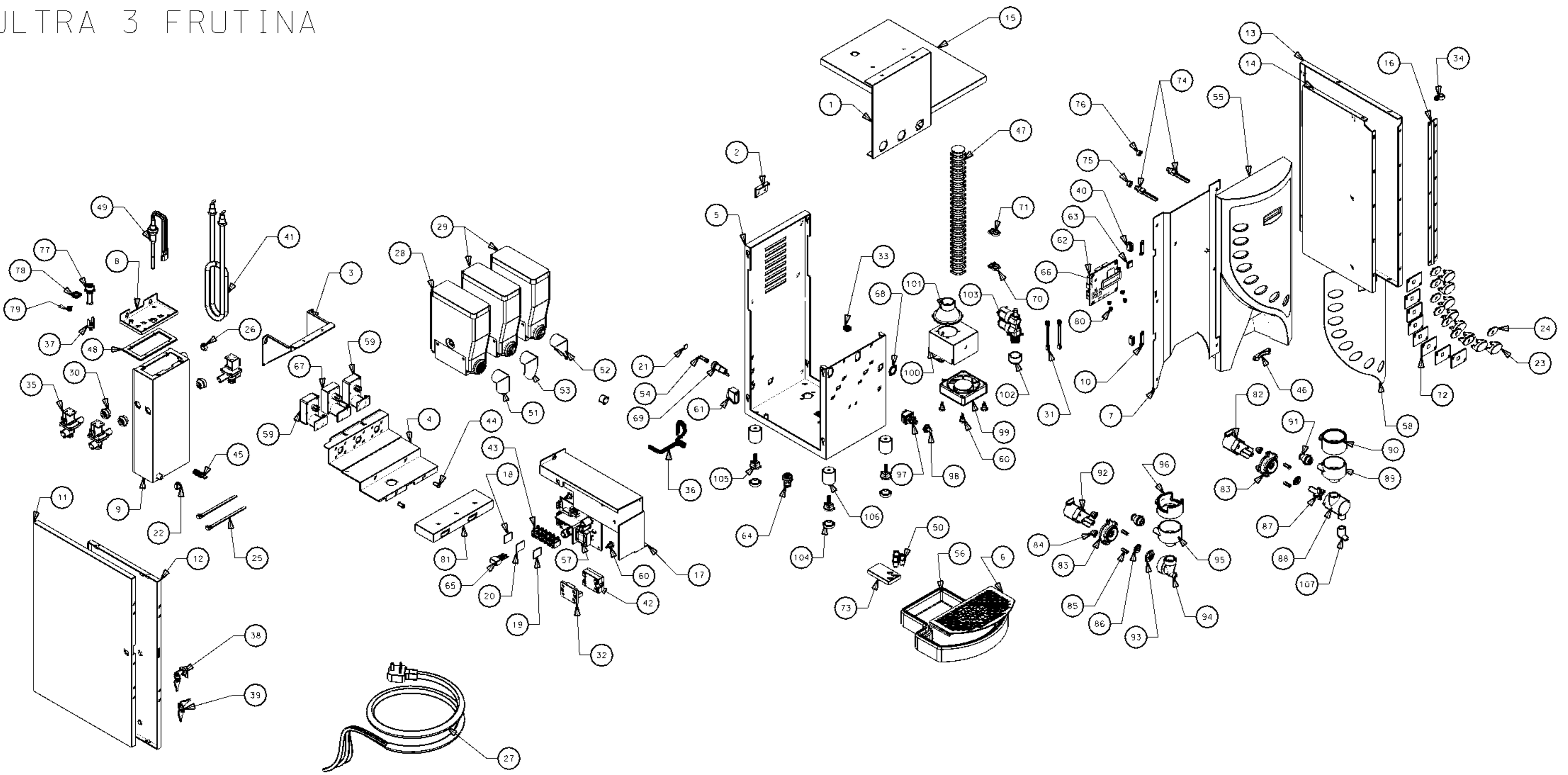


# ULTRA 3 FRUTINA



13-05-03

## ULTRA 3 FRUTINA

NO.	QTY.	DESCRIPTION	PART NUMBER	NO.	QTY.	DESCRIPTION	PART NUMBER
1	1	Boiler cover	65922	58	1	Coffetek ultra 3 picture	56542
2	1	Rear lid holder	66150	59	2	Ing motor/gearbox 24V 140	59002
3	1	Motor holder	66709	60	8	Pcbs black psu dc micro	59004
4	1	Canister shelf	67060	61	1	Cable gland DC micro	59010
5	1	Main body 338 pl door	68086	62	1	Rmcu dc control board	59011
6	1	Ultra 338 drip tray grill	67963	63	1	Eprom psd 312b-15j (Stat	59014
7	1	Ultra 338 door backer	67990	64	1	Bowl adaptor	59041
8	1	Boiler lid	68081	65	1	Rifa mains capacitor EMC	59052
9	1	Boiler	68085	66	1	LCD display red 338/64-12	59064
10	2	Magnetic catch	69028	67	1	Ing motor gear box 80 rpm	59207
11	1	L/h side panel 338 ultra	68087	68	1	Grammet 20mm	71026
12	1	L/h side panel insert	68088	69	1	16 amp fuseholder bussman	71101
13	1	R/h side panel 338 ultra	68089	70	1	Snapper clip no 10	71740
14	1	Right hand side panel in	68090	71	1	Snapper clip no 12	71745
15	1	Cabinet lid 338 ultra	68091	72	8	Ultra 3 pcb	56358
16	1	Door hinge 338 ultra	68092	73	1	Dispense head ultra 3	56452
17	1	Electrics box ultra 338	68093	74	2	Flush switch with cap	54378
18	1	Live terminal label	10008	75	1	Switch cap red shut off	54382
19	1	Neutral terminal label	10009	76	1	Flush switch cap in green	54379
20	1	Earth terminal label	10010	77	1	Re-set button	56457
21	1	F15 sticker	22022	78	1	'O' ring for reset button	56459
22	1	Cobra clip 15mm normal	54012	79	1	Spring 110x12x5x5.1	56469
23	8	Button cap	54041A	80	4	Circuit board spacer	56175
24	8	Striker plate	54041B	81	1	Extract duct	66711
25	2	Cable tie for boiler	22102	82	1	Whipper mtr long shaft	89001
26	1	Cobra clip 14mm normal	54011	83	2	Whipper base grey	54034
27	1	UK mains lead with 13A p	54416	84	4	Whipper clip grey	54126
28	1	Can 220mm wire auger + a	54434	85	4	Whipper screws ds416	56198
29	2	Can 220mm Plastic aug+agi	54436	86	2	Large red whipper seal	54699
30	3	Swaged port valve seal	54543	87	1	Impellor cafe 3/4/5/6/ser	56291
31	2	Interlink dc valve conne	54545	88	1	Whipper chamber 12mm out	55410
32	1	S S R Terminal cover	54552	89	1	Mixing bowl restrict grey	56165
33	1	16mm hole diaphragm grom	54604	90	1	Steam trap grey	55903
34	1	P clip NX4	54790	91	2	Mixing bowl skt/sonic we	55372
35	3	Outlet valve 8mm 24V DC	55003	92	1	Whipper mtr 24v DC short	59001S
36	1	Sub loom whale pump	55150	93	1	Impellor disc small whip	56145
37	1	Thermal cutout 95 degrees	55250	94	1	Whiper chamber horiz mid	55898
38	1	Mini camlock & cam 2 keys	55337	95	1	Mixing bowl unrest 3.8 br	59407
39	1	Key(s)	55337K	96	1	Steam trap double clear	56164
40	2	Door magnet	55341	97	1	Toggle switch	55462
41	1	Element 3KW 240V SID/TID	55430	98	1	Switch cover	55463
42	1	SS relay 240v	55466	99	1	Extract fan saunon	55239
43	1	Terminal block strip 32A	55517	100	1	Fan box	66390
44	2	4mm pin bullet	55639	101	1	Extract fan funnel	55930
45	1	Hose bung flangeless plug	55692	102	1	Dust cover for inlet val	20014A
46	1	Cuplocator	55745	103	1	Inlet valve 24v DC doub	59235
47	1	Hose 1 1/4 extra flex	55770	104	4	Foot cover non slip	55226
48	1	Boiler seal	55781	105	4	Small feet black m8 x 25	55223
49	1	Boiler probe assembly	94543	106	4	Foot spacer 8mm topped	56311
50	3	Beverage spout	55983	107	1	Pipette	55520
51	1	Ingredient chute central	56028	108	0.1m	Heat shrink 12.7mm	54132
52	1	R/h chute	56032	109	0.6m	Tube 9x15 dispense/inlet	55428
53	1	L/h chute	56037	110	0.6m	Tube 11x18 overflow	55438
54	1	15A fuse	56114	111	0.5m	Tube 6x10mm	55683
55	1	Ultra 3 door silver	56248	112	1	Keypad loom ultra 3	56443
56	1	Ultra 338 drip tray	56316	113	1	Main loom ultra 3	56455
57	1	Psu gourmet micro	56365	114	1	Flush loom ultra 3	56482
				115	0.6m	Tube 8x12mm	59070

13-05-03