



MAXI KEY

OWNER'S MANUAL



Release 1.0 – October 2004

INDEX

1. GENERAL CHARACTERISTICS OF MAXI KEY	4
1.1. OPERATING MODE	4
1.2. SOFTWARE PROVIDED WITH MAXI KEY	4
2. MAXI KEY MANAGER	4
2.1. MODIFICATION OF MAXI KEY FUNCTION CODE	5
2.2. SETTING OPERATOR CODE	7
2.3. MAXI KEY MANAGEMENT TOOLS	7
2.3.1. UPDATING MAXI KEY DATE/TIME	7
2.3.2. DELETION OF DATA STORED IN THE MAXI KEY	7
2.4. SETTINGS OF THE MAXI KEY SOFTWARE	8
2.4.1. CONFIGURATION	8
2.4.2. INFORMATION ON SOFTWARE VERSION	9
3. STATISTICAL COLLECTION	9
3.1. PREPARATION OF THE MAXI KEY	9
3.1.1. PREPARATION OF THE MAXI KEY FOR STATISTICAL COLLECTION BY DB9	9
3.1.2. PREPARATION OF THE MAXI KEY FOR STATISTICAL COLLECTION VIA THE READER	9
3.2. STATISTICAL COLLECTION VIA THE READER	10
3.3. STATISTICAL COLLECTION VIA DB9 CONNECTOR	10
3.4. NOTES ON STATISTICS COLLECTED	11
4. MAXI KEY SETUP: SETTING OF PAYMENT SYSTEM PARAMETERS	12
4.1. PRELIMINARY OPERATIONS	12
4.1.1. IDENTIFICATION OF A SYSTEM	12
4.1.2. PREPARATION OF THE MAXI KEY	12
4.1.3. OPERATOR CODE PROGRAMMING	13
4.1.4. SOFTWARE CONFIGURATION	13
4.2. CREATING A CONFIGURATION	14
4.2.1. LOCATION NAME AND ADDRESS	15
4.2.2. SAVING THE CONFIGURATION	16
4.2.3. TRANSFERRING A CONFIGURATION TO MAXI KEY	16
4.2.4. MODIFYING A CONFIGURATION	17
4.2.5. PRINT CODES	18
4.3. MAXI KEY MANAGEMENT	18
4.3.1. DELETION OF A CONFIGURATION MEMORIZED IN THE MAXI KEY	19
4.3.2. SPACE OCCUPIED IN MAXI KEY	20
4.4. ADDITIONAL FUNCTIONS AND SUGGESTIONS	20
4.4.1. IMPORTING/EXPORTING THE "BLACK LIST"	20
4.4.2. HOW TO SAVE SEVERAL IDENTICAL CONFIGURATIONS UNDER DIFFERENT NAMES	21
4.4.3. MAXI KEY SETUP SOFTWARE VERSION	22
4.5. TRANSFER OF CONFIGURATION TO PAYMENT SYSTEM	22
5. MAXI KEY SW UPDATE	23
5.1. PRELIMINARY OPERATIONS	23
5.1.1. KEY PREPARATION	23
5.1.2. CONFIGURATION OF MAXI KEY SW UPDATE	23

5.1.3. VERSION OF MAXI KEY SW UPDATE _____	24
5.2. OPERATIONS WITH THE MAXI KEY SW UPDATE _____	24
5.2.1. CHOICE OF SOFTWARE _____	24
5.2.2. TRANSFER OF SOFTWARE TO MAXI KEY _____	25
5.3. UPDATING PAYMENT SYSTEM SOFTWARE _____	27
6. UPDATING THE MAXI KEY FIRMWARE _____	27
7. PAYMENT SYSTEM VERSIONS THAT ARE COMPATIBLE WITH MAXI KEY _____	27

1. GENERAL CHARACTERISTICS OF MAXI KEY

The Maxi Key makes it possible to carry out:

- Statistical collection by inserting the key in the reader of the ZIP and ZIP Loader systems (except for special versions ZIP UG, 3 Purses, Negative Credit, ZIP with Printer).
- Statistical collection by means of DB9 connector in all ZIP and CONPAS systems.
- Parameter setup in ZIP, ZIP Loader, Caterpay and ZIP Loader Plus systems (does not include the ZIP special versions as mentioned above).
- Software updating of all ZIP systems (ZIP in all versions, ZIP Loader, ZIP Caterpay, ZIP Loader Plus).
- Collection of data from the Maxi Box module (see the Maxi Box manual).

1.1. OPERATING MODE

The Maxi Key has two functions:

1. Statistical collection when inserted in compatible payment systems.
2. User-programmable operating mode when inserted in the DB9 connector of the payment system. The four programmable modes are:
 - a. Data Collection: the Maxi Key collects the statistics from the payment system as shown in 3.4.
 - b. Software Update: the Maxi Key provides for the updating of the payment system firmware.
 - c. Data Collection from Maxi Box: the Maxi Key collects the statistics in the Maxi Box module.
 - d. Setup Parameters: the Maxi Key deals with configuration of the payment system parameters.



To choose the desired operating mode, you need to use the "Maxi Key Manager" software, provided with the CD-ROM enclosed with Maxi Key.

1.2. SOFTWARE PROVIDED WITH MAXI KEY

The following software is provided with the CD-ROM enclosed with the Maxi Key:

1. Maxi Key Manager: Software for setting the operating modes of Maxi Key.
2. Maxi Key sw Update: Software for updating payment system firmware.
3. Maxi Key Setup: Software for programming the payment system parameters.

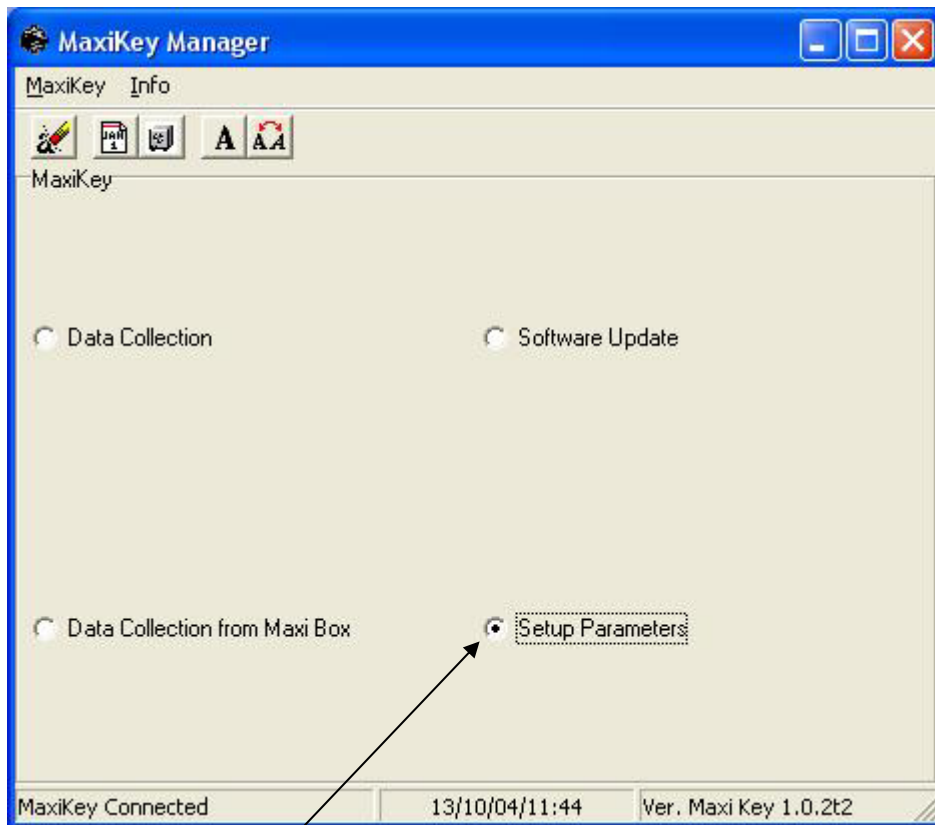
2. MAXI KEY MANAGER

The Maxi Key Manager is the software that lets you manage the operation of the Maxi Key. With it you can:

1. Decide the operating mode of the Maxi Key:
 - a. Data Collection
 - b. Software Update
 - c. Data Collection from Maxi Box
 - d. Setup Parameters
2. Set the Maxi Key date and time;
3. Set the Operator Code for the Maxi Key;
4. Delete the contents of the Maxi Key memory;

When the program starts running, if there is a Maxi Key connected to the PC interface, the software automatically displays some information concerning the Maxi Key, as shown in the following figure:

The following data is shown on this screen display:

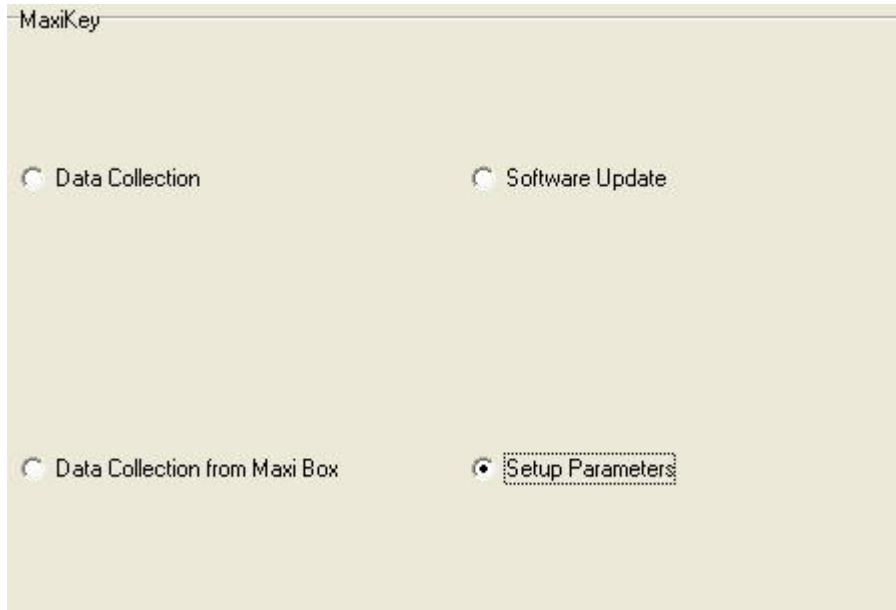


1. Maxi Key operating mode
2. Time and date contained in the Maxi Key
3. Maxi Key firmware version

2.1. MODIFICATION OF MAXI KEY FUNCTION CODE

The following is the procedure to modify the operating mode:

1. Choose the desired operating mode



2. Press the key "Write function code Maxi Key " (or enter the menu Maxi Key→ Write function code Maxi Key).
3. Be aware that changing the operating mode of the Maxi Key causes the **deletion of all information stored in memory**¹.



If "yes" is selected, the Maxi Key function code will be updated.




To check correct writing of the function code, you can use the function "Read function code Maxi Key " by pressing key **A** (or enter the menu Maxi Key→ Read function code Maxi Key).

¹ **The statistics memorized in the key are not deleted.**

2.2. SETTING OPERATOR CODE

The procedure for setting the Operator Code² in the key is the following:

1. Choose "Operator Code"  (or enter the menu Maxi Key → Operator Code).
2. Insert your operator code and press the "Ok" key.



2.3. MAXI KEY MANAGEMENT TOOLS

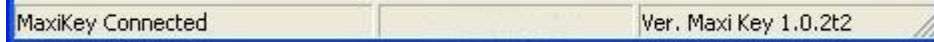
2.3.1. UPDATING MAXI KEY DATE/TIME

To update the clock contained in Maxi Key, you need to follow this procedure:

1. Check that the day and time set on your PC are correct.
2. Press the "Date and Time" button (or enter the menu Maxi Key → Date and Time).
3. The date and time will be updated and it will be possible to see this in the status bar.




If the time is not shown in the status bar, but the message "Maxi Key connected" appears,

 this means that the Maxi Key date and time have not yet been set.

Therefore, you need to set the date and time using the previously described procedure.

2.3.2. DELETION OF DATA STORED IN THE MAXI KEY

The procedure for resetting the Maxi Key memory is the following:

1. Press the "Reset Maxi Key"  key (or enter the menu Maxi Key → Reset Maxi Key).
2. Confirm the operation:

² For a more detailed explanation of the management of the Operator Code between the key and the payment system refer to the subsequent sections.



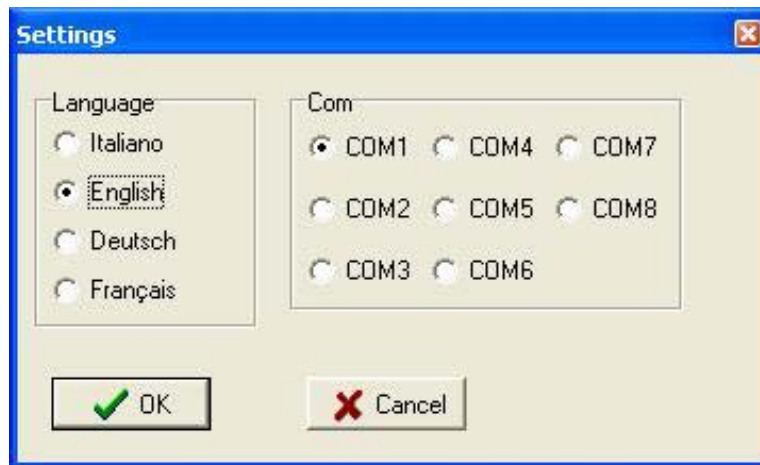
3. The content of the memory will then be deleted. Remember that only the data concerning the following items will be deleted:
- a. Software Update
 - b. Collection from Maxi Box module
 - c. Parameter Setup

Any statistical collections in the Maxi Key will **NOT** be deleted. The only way to delete them is by using the "Box32"³ software.

2.4. SETTINGS OF THE MAXI KEY SOFTWARE

2.4.1. CONFIGURATION

Select the menu "Maxi Key→ Settings" (or press key F5). You will be able to choose the program language and the serial portal that the PC interface is connected to. Once settings are completed, press the "Ok" key to memorize them.



³ For the details of this operation, refer to the manual for the "Box32" software.

2.4.2. INFORMATION ON SOFTWARE VERSION

Choose "Info" to find out which version of the Maxi Key Manager software is currently in use.



3. STATISTICAL COLLECTION

The Maxi Key lets you collect statistics from the payment systems and display them using the Box32 software.

3.1. PREPARATION OF THE MAXI KEY

3.1.1. PREPARATION OF THE MAXI KEY FOR STATISTICAL COLLECTION BY DB9

It is necessary to carry out the following preliminary operations:

1. Use the "Maxi Key Manager" software and set the "Data Collection" operating mode.
2. Use the "Maxi Key Manager" software and set the date and time in the key.
3. Use the "Box32" software to set the "Operator Name" and the "Operator Number".



For a correct time and date indication of the statistical collection, the correct time and date must be set on the PC.

3.1.2. PREPARATION OF THE MAXI KEY FOR STATISTICAL COLLECTION VIA THE READER

In order to collect statistics by inserting the Maxi Key in the reader, the following preliminary actions must be carried out:

1. Use the "Maxi Key Manager" software and set the Operator Code of the Maxi Key. The Operator Code must be the same one as is programmed in the payment system.
2. Use the "Maxi Key Manager" software and set the date and time in the key.
3. Use the "Box32" software to set the "Operator Name" and the "Operator Number" (by selecting the menu Terminal → Operator Codes)

3.2. STATISTICAL COLLECTION VIA THE READER

Statistical collection may be performed by inserting the Maxi Key in the reader of the following payment systems:

- Zip
- Zip Loader

When the key is inserted in the reader of the payment system, the key is accepted if:

- In the payment system the operator code = 1 (in this case the payment system would accept the Maxi Key regardless of the operator code programmed in it).
- The payment system and the Maxi Key are programmed with the same operator code.

During statistical collection from the reader, the LED of the key is always off; therefore, the collection status is indicated by the LED of the reader and possibly by the display.

The payment uses the following codification:

- Reader LED: When the key is inserted in the reader, the LED of the reader alternates between green and red.
 - If data collection is successful, the LED stays red until the key is removed.
 - If there is an error, the LED will flash green and red.
 - If the memory of the Maxi Key is full, the Led will flash red, and then it will begin to flash green and red.
- 5-digit display: when the key is inserted (and if the key code is recognized) the display will show the message "Audit".
 - If collection is completed correctly the display will show the message "Out", otherwise the message "Err-10" will appear.
- Display LCD: when the key is inserted, the LCD will show the message "Audit" which remains for the entire duration of the collection. When collection is complete the message "Data Acquired" appears.
 - If there is an error, the message "Event 10" appears.



To delete the contents of the Maxi Key memory, use the following procedure:

1. Save the statistics using the Box32 software.
2. Select the menu Terminal → Reset in the Box32 software

3.3. STATISTICAL COLLECTION VIA DB9 CONNECTOR

If statistics are collected via the DB9 collector, the Maxi Key uses the LED to inform the operator of the operation status. The collection process is the following:

- Maxi Key LED:

When the Maxi Key is connected to the DB9 connector of the payment system, the LED of the key starts flashing green. When collection is complete the LED flashes red if collection was not successful or stays steady red if the collection was successful.

- Payment system LED

When the Maxi Key is connected to the DB9 connector, the LED of the reader stays green until collection is complete. If collection is successful, the LED turns red and stays red until the key is disconnected. If there is an error the LED of the reader flashes green and red.

- 5-digit display

When the Maxi Key is connected to the DB9 connector, the display shows the message "Att ." which remains until collection is complete.

- If the collection concludes correctly the display shows the message "Out."
- If there is a communication error, the display shows the message "Err-10".

- LCD

When the Maxi Key is connected to the DB9 connector, the LCD shows the message "Audit" on the first line.

- If the collection concludes correctly the display will once again show the date and time.
- If there is a communication error, the display will show the message "Event 10".



Note:

If the Maxi Key memory is full, the LED will flash red and green.

3.4. NOTES ON STATISTICS COLLECTED

The statistics collected by the Maxi Key depend on the configuration of the system that it is connected to. The following table summarizes the statistics that can be collected by means of the Maxi Key.

Payment system	Standard Statistics	Maxi Key Statistics	Extended Statistics
Compas	DB9	Not present	Not present
Zip	DB9/reader	DB9 /reader	Not present
Zip Loader	DB9/reader	DB9 /reader	Not present
Zip Loader Plus	DB9	Not present	DB9
Caterpay	DB9	Not present	DB9



For further information concerning the meaning of the various statistics, refer to the manual for the "Box32" software and the use manuals for the various systems.

4. MAXI KEY SETUP: SETTING OF PAYMENT SYSTEM PARAMETERS

The "Maxi Key Setup" software lets you program the parameters of your payment system using the Maxi Key and a graphic interface for the PC.

The systems⁴ which can be programmed by means of the Maxi Key are:

- Zip
- Zip Loader
- Zip Loader Plus
- Caterpay

4.1. PRELIMINARY OPERATIONS

4.1.1. IDENTIFICATION OF A SYSTEM

Up to 80 configurations for 80 different payment systems can be memorized in a Maxi Key. Each system is uniquely identified by the following three codes:

1. **Customer Code**
2. **Machine Code**
3. **Reader Code**



Example:

The Maxi Key is connected to a system with the following codes:

- **Customer Code** **12345**
- **Machine Code** **Test001**
- **Reader Code** **ABCDEF**

The Maxi Key will check its memory to see if the configuration for that specific system is present. If it is, it will proceed with parameter programming.

Otherwise, no operation will be performed.

These three codes may in no way be programmed in the system through the Maxi Key but must be previously programmed using the programmer.

4.1.2. PREPARATION OF THE MAXI KEY

To carry out parameter configuration with the Maxi Key it is necessary to follow this procedure:

1. Use the Maxi Key Manager software to set the operating mode to "Setup Parameters".
2. Use the Maxi Key Manager software to set the Maxi Key Operator Code; this code must be the same as the one set in the payment system.
3. Use the Maxi Key Manager software to set the key's date and time.



When the Maxi Key is connected to the payment system, it will automatically update the date and time in the system.

⁴ The systems must be updated to the firmware version shown at the end of the manual

4.1.3. OPERATOR CODE PROGRAMMING

The Maxi Key will proceed with system programming only if the operator code set in the Maxi Key coincides with the one set in the payment system.

If the operator code programmed in the payment system is "00000001" (default value), the Maxi Key will proceed with parameter setup and it will also update the operator code of the system with the one memorized in the key.

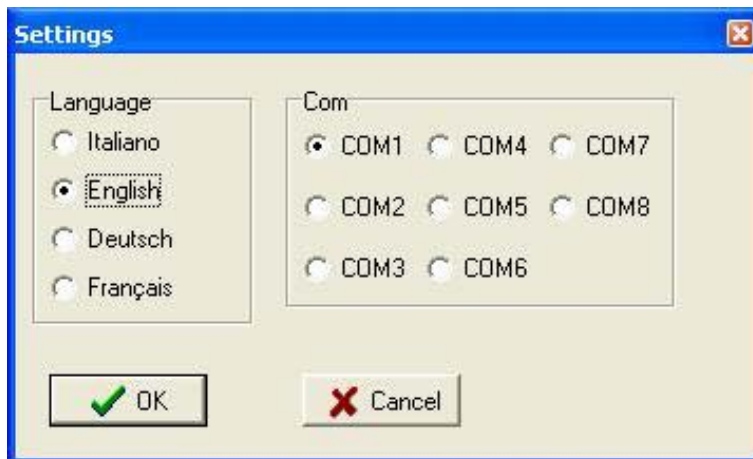
Maxi Key Operator Code	Payment system Operator Code	Effect
XXXXXXXX	YYYYYYYY	Different operator codes → no parameter programming performed
XXXXXXXX	XXXXXXXX	Same operator codes → parameter programming performed
XXXXXXXX	00000001	→ The operator code of the payment system is updated to XXXXXXXX → parameter programming performed



In order to avoid involuntary changes of your operator code, remember never to leave the operator code set to "00000001".

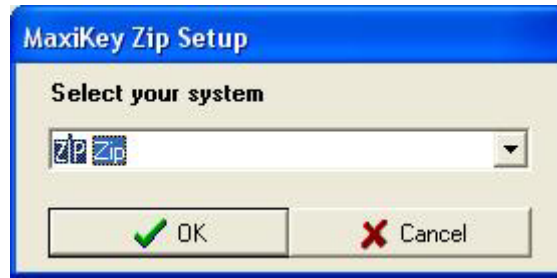
4.1.4. SOFTWARE CONFIGURATION

To access software setting, select the menu "File → Settings" (Or press key F5). It will be possible to select the desired program language and the serial portal to which the PC interface is connected. Once setting is complete, press "OK" to memorize them.



4.2. CREATING A CONFIGURATION

1. Press the button “New Setup”, (or select the menu File→ New Setup):

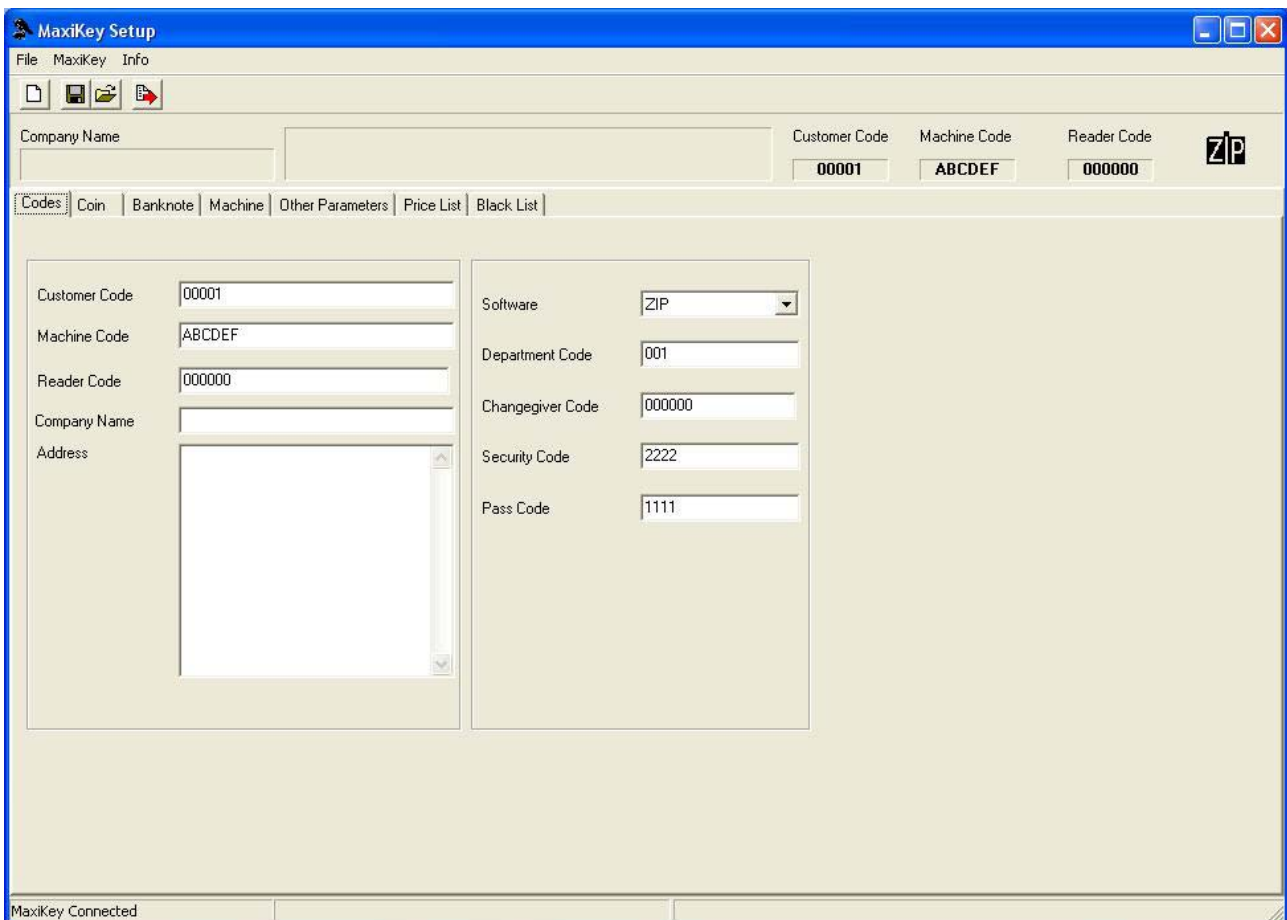


2. Select the desired type of system and press the key "Ok".
You can generate a configuration for the following systems:

- Zip
- Zip Loader
- Zip Loader Plus
- Zip Caterpay

An interface will open for programming the desired system.

The figure shows the interface for the configuration of a Zip payment system.



3. Set the “Customer Code”, the “Machine Code” and the “Reader Code” that identify the system for which you want to prepare the configuration, as explained in paragraph 4.1.1.

- Set the software field based on the configuration of your system

System	Software
ZIP	ZIP
	ZIP + RAM
ZIP Loader plus	ZIP LOADER PLUS
	ZIP LOADER PLUS + RAM
Zip Loader	ZIP LOADER MK
	ZIP LOADER MK+ RAM
ZIP Caterpay	ZIP CATERPAY U.G.

- Proceed with setting the parameters for the selected system.



The graphic interface for programming the parameters reproduces the structure of the configuration menus for the various systems. Therefore, some parameters may be programmable only if certain options are activated. For more details on parameter meaning and programming, refer to the use manuals of the respective systems.

4.2.1. LOCATION NAME AND ADDRESS

Each configuration also includes two additional fields (which it is optional to complete) that let you match each configuration with the location name (for example "Company Name") and its address, in order to make it easier for the operator to identify the payment system.

It should be pointed out that these two additional pieces of data, Company Name and Address, are neither sent nor in any way handled by the payment system.



The upper part of the window shows the system identification codes, the possible "Company Name" and "Address" and an icon which represents the type of system, as shown in the following figure:

Company Name Ade S.r.l.	Via L.Galvani 6,Villotta di Chions(Pn)	Customer Code 12345	Machine Code Test01	Reader Code Prove1	
----------------------------	--	------------------------	------------------------	-----------------------	--

4.2.2. SAVING THE CONFIGURATION

To save the configuration you have just created, press the key "Save Setup" (or select the menu File→ Save Setup).

The file will be saved in Programs\Ade\ MK Setup\zcf.

The file name will be Client Code_Machine Code_Reader Code.zcf.



Example:

Suppose you need to create a configuration for a system with the following codes:

- Customer Code 12345
- Machine Code Test001
- Reader Code ABCDEF

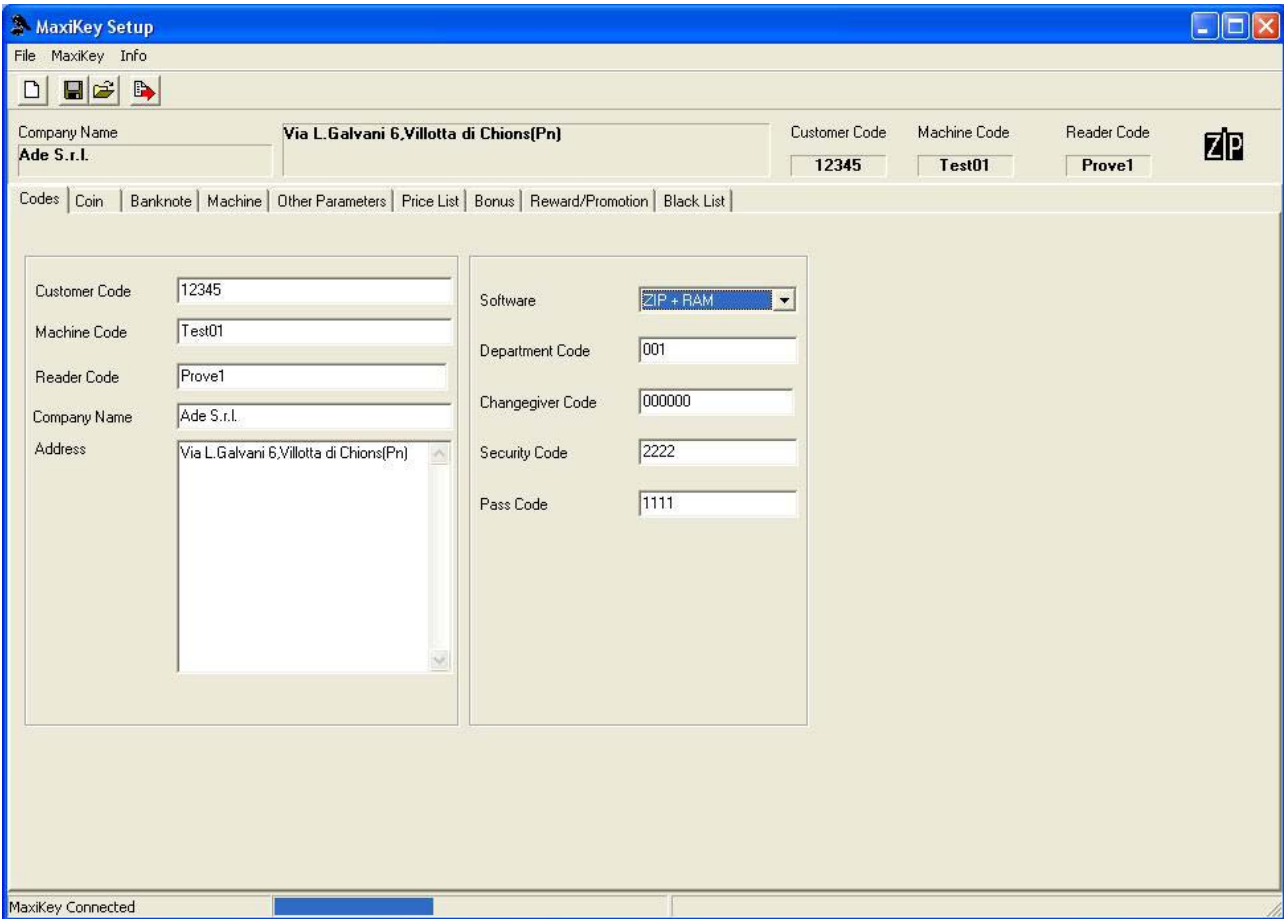
Once this configuration is created and saved, it will be found in Programs\Ade\ MK Setup\zcf and it will be memorized in the file "12345_Test001_ABCDEF.zcf".

4.2.3. TRANSFERRING A CONFIGURATION TO MAXI KEY

To transfer a configuration to the Maxi Key, follow this procedure:

1. Connect the Maxi Key to the PC interface.
2. Press the key "Transfer Setup on Maxi Key" ⁵ (Or select the menu Maxi Key→ Transfer Setup on Maxi Key)
3. An indicator in the lower part of the main window will show the progress status of the transfer of data from the PC to the Maxi Key.

⁵ The button can be selected only if the Maxi Key is connected to the Pc Interface.




The time for the transfer of the data from the PC to the Maxi Key depends on the type of system selected.

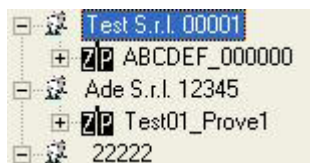


When you connect the Maxi Key to the PC interface and the message "Maxi Key Connected" does not appear in the status bar, check that the serial port is properly configured and, by means of the Maxi Key Manager software, that the operating mode of the Maxi Key is "Setup Parameters".

4.2.4. MODIFYING A CONFIGURATION




To modify a previously memorized configuration, select "Open Setup",  (or select the menu → Open Setup).

The software will automatically examine the contents of the folder Programs\Ade\ MK Setup\zcf, providing a display of configurations ordered by "Company Name" and "Customer Code". Select a location and you will be able to view all systems associated with it, as shown in the following figure.



For each system, the following information is provided, as shown in the following figure:

The following data is shown:

-  Time and date of the last time the configuration was saved.
-  Time and date of most recent transfer of the configuration to a Maxi Key.
-  Any address where the selected system is installed

To modify the selected configuration, press the "Edit" key. To delete it, press the "Delete" key.



Note:

To edit a configuration file received by e-mail or created on another PC, just copy it in Programs\Ade\ MK Setup\zcf.

4.2.5. PRINT CODES

By selecting one or more systems⁶ and then selecting "Print Codes", it is possible to get a printout with "Company Name", "Address" and the codes of the selected systems, as shown in the following figure.

MaxiKey Setup

Test S.r.l.

Customer Code: 22222	Machine Code: cassa	Reader Code: 000065
----------------------	---------------------	---------------------

Via delle Prove 8

Customer Code: 22222	Machine Code: cassa	Reader Code: 000064
----------------------	---------------------	---------------------



Use this function to find out where the systems are located that need to be updated via the Maxi Key.

4.3. MAXI KEY MANAGEMENT

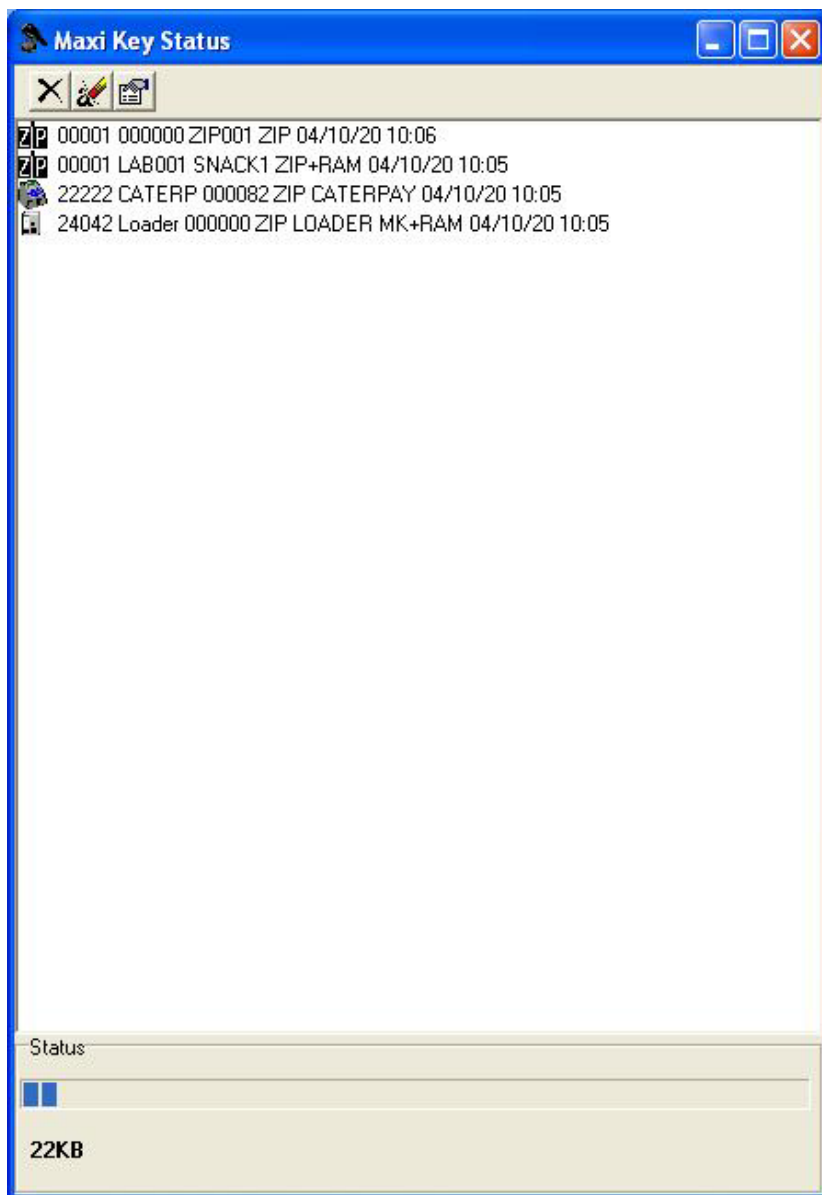
Selecting the menu "Maxi Key→ Maxi Key Status" will show the contents of the Maxi Key connected to the PC interface.

The identification data are displayed in the following format:

```
ZIP 00001 LAB001 SNACK1 ZIP+RAM 04/10/20 10:05
```

⁶ In order to select more than one machine, while pressing "CTRL" select the additional machines.

- System identification icon
- Customer Code/Machine/Reader
- System Type⁷
- Date⁸ and time of memorization in the Maxi Key.



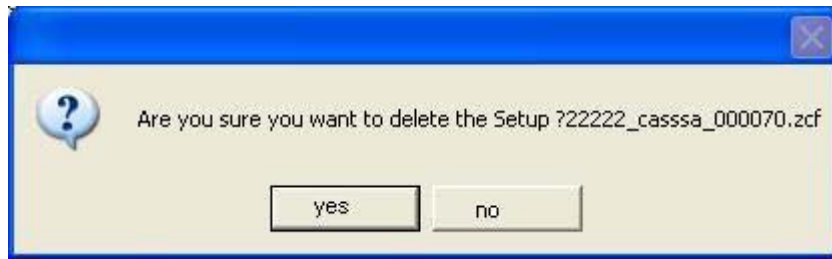
4.3.1. DELETION OF A CONFIGURATION MEMORIZED IN THE MAXI KEY


To delete a configuration memorized in the Maxi Key, follow this procedure:

1. Select the configuration that you want to remove.
2. Press the key "Delete"
3. Confirm deletion by pressing "Yes".

⁷ Depends from the "Software" parameter you have chosen. See table pag. 15.

⁸ The data format is: year/month/day.



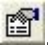
To delete all files memorized in the Maxi Key select “Reset Maxi Key”  and confirm the operation by pressing “Yes”



4.3.2. SPACE OCCUPIED IN MAXI KEY

The lower part of the “Maxi Key Status” shows the space occupied by the configurations. The occupied memory is shown in both absolute values as well as by percentage via an indicator.



To update this data, press the key . Do remember however that this data is updated automatically whenever a configuration is deleted from the key.

4.4. ADDITIONAL FUNCTIONS AND SUGGESTIONS

4.4.1. IMPORTING/EXPORTING THE “BLACK LIST”

The “Maxi Key Setup” software lets you import and export the “Black List” files generated by the “KeyCard” software and used for the “Black List Key”⁹.

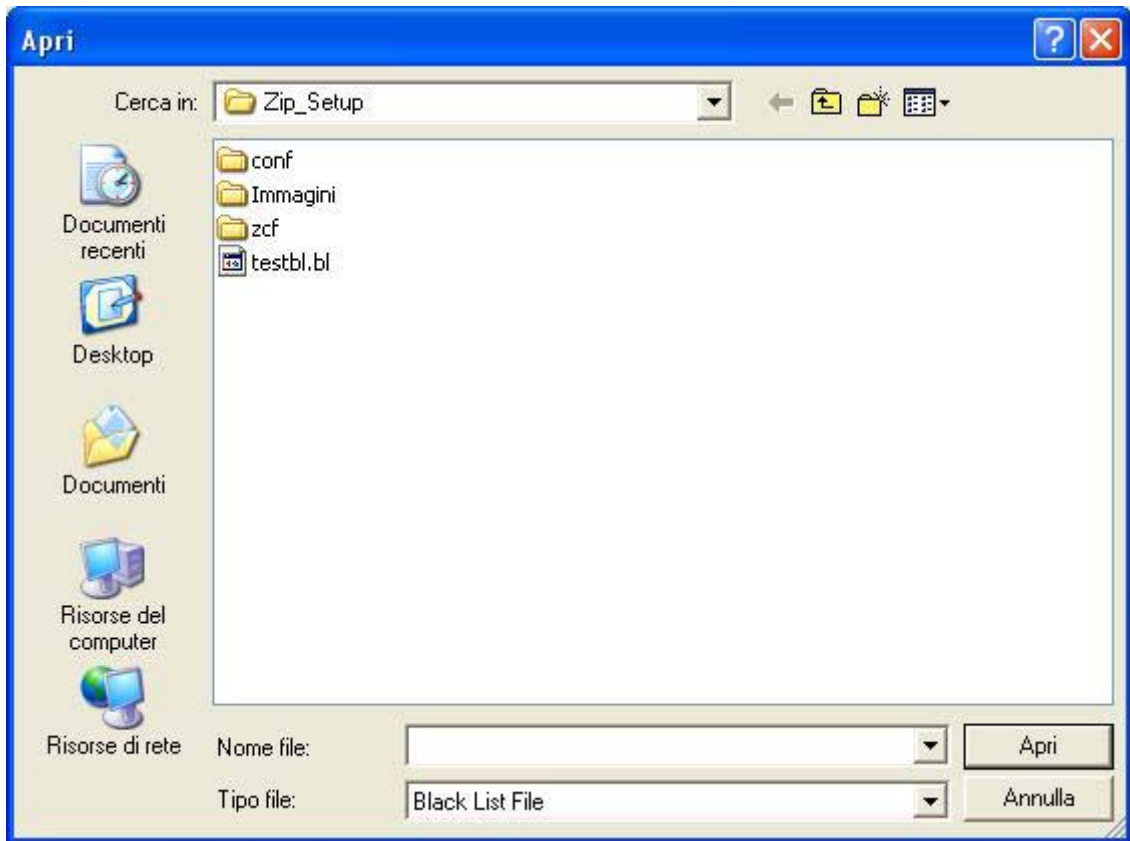
This is the procedure to import a Black List file:

1. Select the Black List card from the parameter programming interface
2. Press the import Black List button



3. Select the file to import and press the key “Open”

⁹ See manuals “KeyCard” and “Black List Key”.



This is the procedure to export a Black List file:

1. Select the Black List card from the parameter programming interface
2. Press the export Black List button

Export Black List

3. Select the file to export and press the key "Save"

4.4.2. HOW TO SAVE SEVERAL IDENTICAL CONFIGURATIONS UNDER DIFFERENT NAMES

To use the same configuration for several different systems, follow this procedure:

1. Create the configuration for the desired system.
2. Save the configuration and transfer it to the Maxi Key. The "Codes" page will automatically be active.

Customer Code	00001
Machine Code	ABCDEF
Reader Code	000000
Company Name	
Address	

3. Change the identification codes of the system and save the configuration again.
All of the parameters will be identical to the previous ones except for the identification codes and possibly the location name and address.

4.4.3. MAXI KEY SETUP SOFTWARE VERSION

To find out which version of Maxi Key Setup software is currently in use, select "Info".

4.5. TRANSFER OF CONFIGURATION TO PAYMENT SYSTEM

To carry out the setup of parameters, connect the Maxi Key to the DB9 connector of the payment system. The Maxi Key will automatically search for the configuration that corresponds to the payment system to which it is connected.

The progress of the transfer of the configuration from the Maxi Key to the payment system is described as follows:

- **Key LED**
When the Maxi Key is connected to the DB9 connector of the payment system, the LED of the key starts flashing green. When collection is complete the LED flashes red if collection was not successful or stays on steady red if the collection was successful.
One possible reason why the setup may not be successful is that the Maxi Key does not contain the file related to that payment system.
- **Payment system LED**
When the Maxi Key is connected to the DB9 connector, the LED or the reader starts a slow red and green flashing.
If collection is successful, the LED turns red and stays red until the key is disconnected. If there is an error the LED of the reader rapidly flashes green and red.
- **5-digit display**
When the Maxi Key is connected to the DB9 connector, the display shows the message "Att . ." which remains until collection is complete.

If the operator code of the key is different from the operator code of the system, the procedure will end in an error and the display will show the message "Err – 2".

If the Maxi Key does not contain a file for that system, the display will show the message "Err-10".

If there is a communication error the display will show the message "Err – 10".

If the setup is correctly concluded, the display will show the message "Out".

- **LCD**

When the Maxi Key is connected to the DB9 connector the LCD shows the message "SETUP" on the first line, and the second line shows a bar which fills in as programming progresses. When the bar occupies the entire second line and programming has concluded correctly, the message "Setup OK" is shown.

If the key does not have a file for that payment system, the LCD will show the message "No setup file".

If the system operator code is different from the operator code of the key, the display will show the message "Event 2".

If there is a communication error the display will show the message "Err – 10".

5. MAXI KEY SW UPDATE

The "Maxi Key sw Update" software lets you update the software of the payment system using the Maxi Key. The payment systems which can be updated via the Maxi Key are:

- Zip
- Zip Loader
- Zip Loader Plus
- Caterpay

5.1. PRELIMINARY OPERATIONS

5.1.1. KEY PREPARATION

You need to configure the Maxi Key in such a way that it works with the "Maxi Key sw Update" software. To do this you need to use the Maxi Key Manager software to set the operating mode to "Software Update". For more information on "Maxi Key Manager" refer to the specific section of the manual.

5.1.2. CONFIGURATION OF MAXI KEY SW UPDATE

To access the software settings, select the file "File→ Settings" (Or press key F5). You will be able to select a program language and the serial portal that the PC interface is connected to.




5.1.3. VERSION OF MAXI KEY SW UPDATE

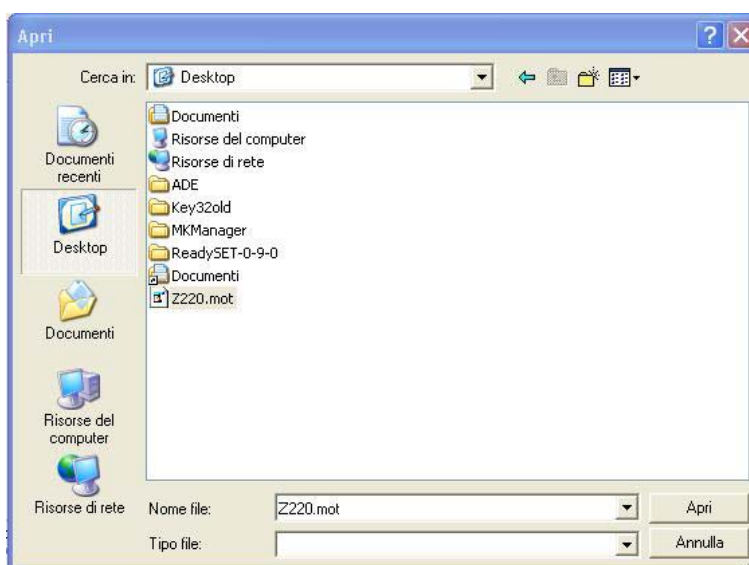
To find out which version of “Maxi Key sw Update” is currently in use, select “Info”

5.2. OPERATIONS WITH THE MAXI KEY SW UPDATE

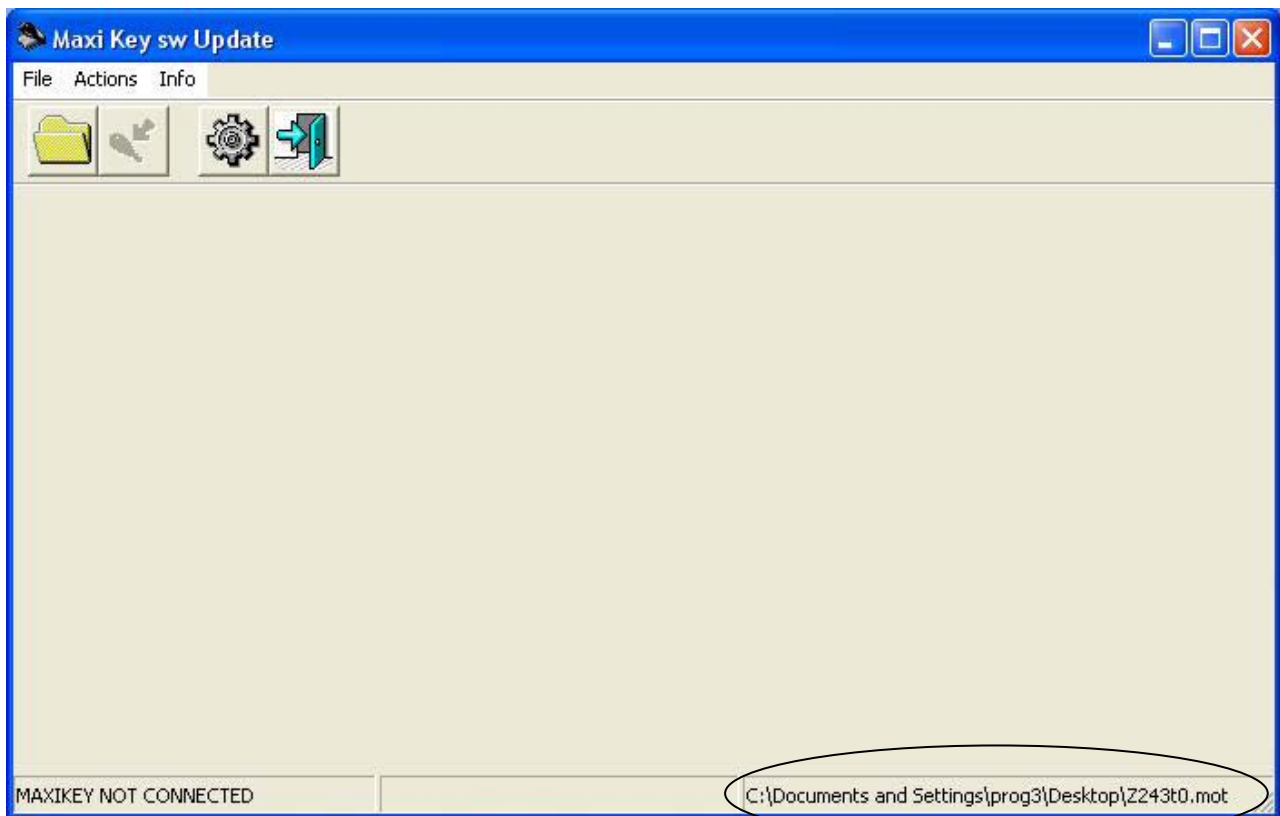
5.2.1. CHOICE OF SOFTWARE

To select the firmware, do the following:


1. Start the Update software.
2. Press the key “Load” . (Or select the menu File→ Load)
3. Select the file with the extension “.mot” from the position where it is located.



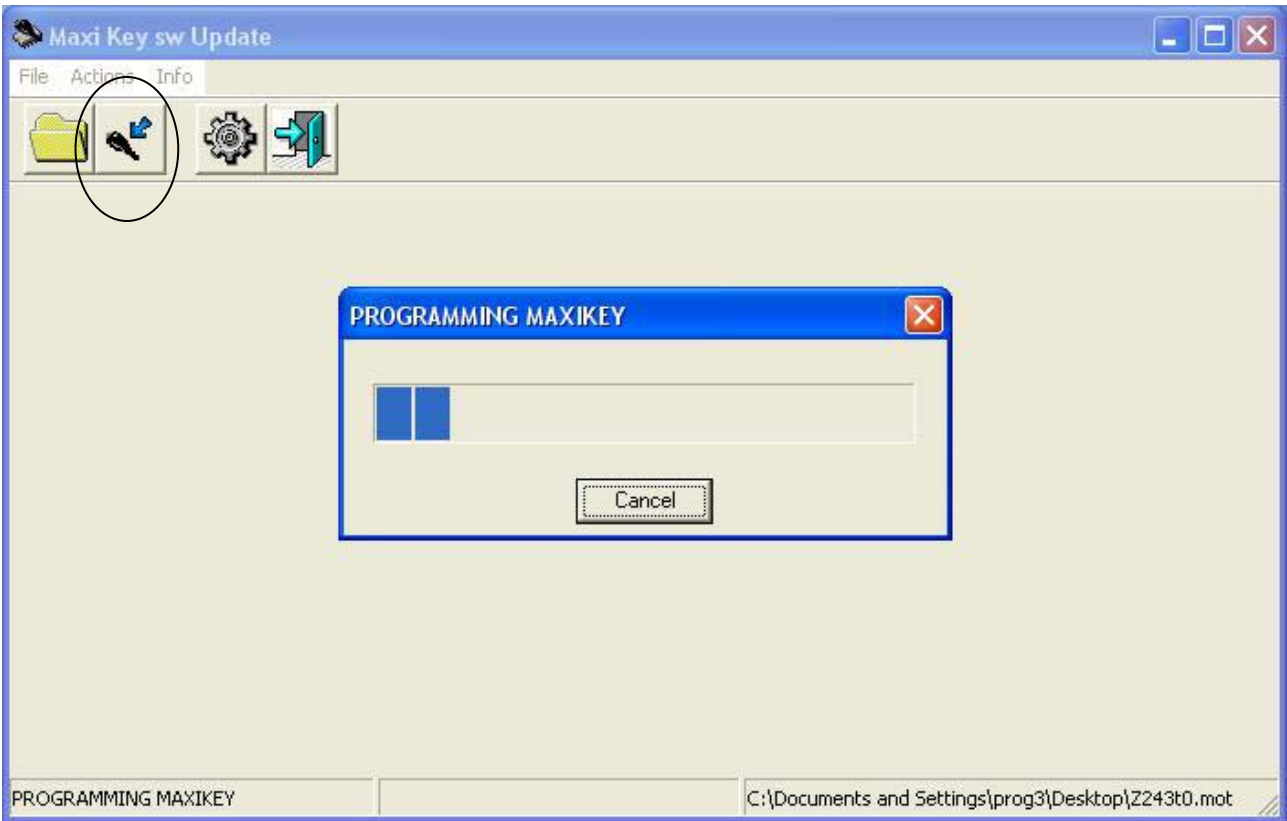
4. Once you have made the selection, press the key “Open” in the interface window to confirm the choice.
5. In the status bar, in the lower right of the main window, you will see the name of the selected file including the location where it is memorized in the PC.



5.2.2. TRANSFER OF SOFTWARE TO MAXI KEY

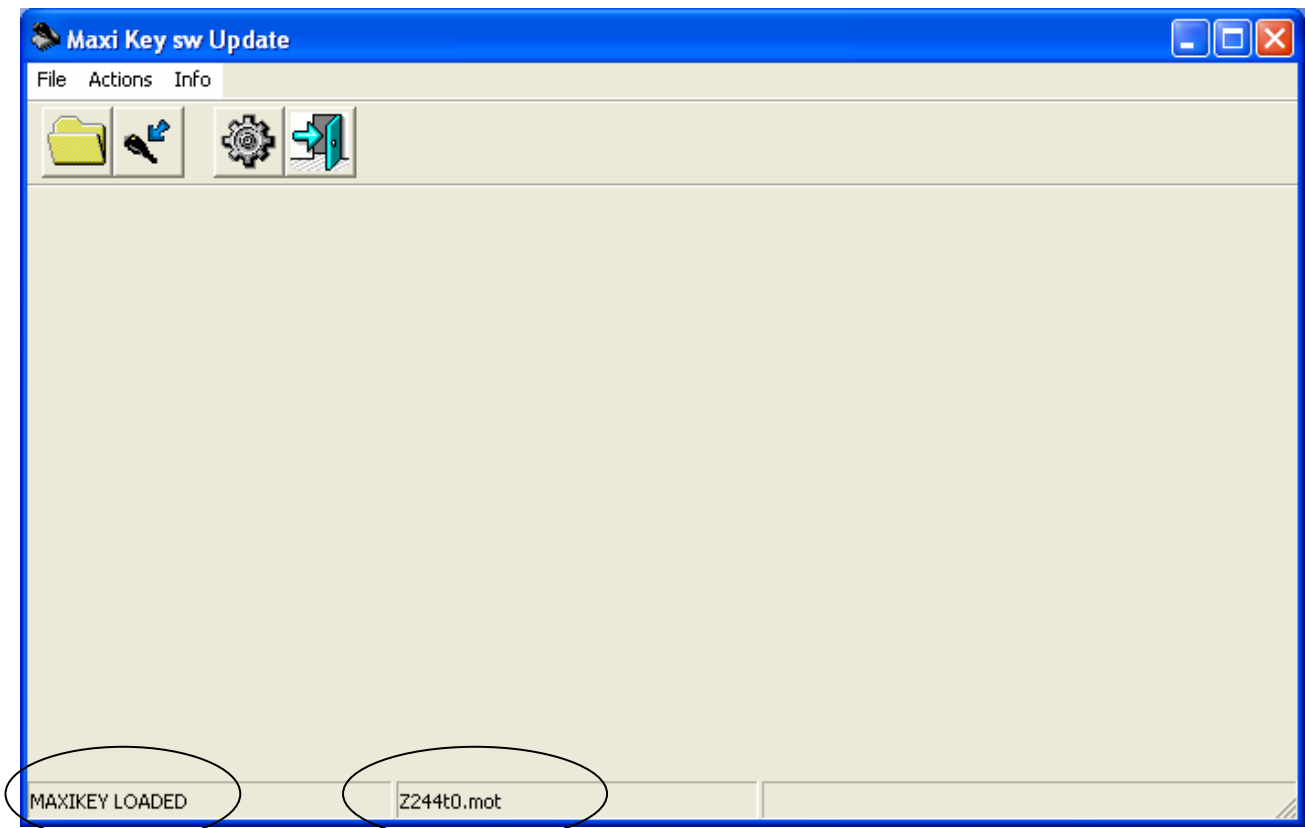
1. Connect the Maxi Key to the PC interface.
2. Press the key "Writing Maxi Key"  ¹⁰. (Or select the menu Operations → Writing Maxi Key)
3. An indicator in a window will show the progress status of the transfer of data from the PC to the Maxi Key.

¹⁰ The button can be selected only if the Maxi Key is connected to the Pc Interface.



The time for the transfer of data from the PC to the Maxi Key depends on the size of the selected software. You can interrupt the procedure at any time by pressing the key "Cancel" in the interface window.

Once you have saved the software in the Maxi Key, the name of the software that has been loaded will appear in the status bar, in the lower part of the main window.



When you connect the Maxi Key to the PC interface and the Maxi Key already contains software, the software status bar will inform you of this situation with the message "Maxi Key Loaded" and the name of the file, as shown in the previous figure.



If you connect the Maxi Key to the PC interface and the message "Maxi Key Connected" does not appear in the status bar, check that the serial portal is properly configured and, via the Maxi Key Manager software, that the operating mode of the Maxi Key is "Software Update".

5.3. UPDATING PAYMENT SYSTEM SOFTWARE

To update the software, the Maxi Key must be connected to the payment system by means of the DB9 connector.

The Maxi Key uses the LED to inform the operator of the operation status.

When the Maxi Key is connected to the DB9 connector of the payment system, the Maxi Key LED turns green. After a short time, the LED flashes green to indicate updating of the payment system firmware.

If updating concludes correctly, the LED becomes steady red; if instead there is an error the LED will flash red.



If the updating operation is not successful, the system may not be usable. You will need to disconnect the Maxi Key and repeat the updating procedure, turning the system off and then back on.

6. UPDATING THE MAXI KEY FIRMWARE

To update the firmware of the key, use the "FlashSta" software and a PC interface. The procedure is the following:

1. Move the slide deviator (switch) of the key from its original position (towards the DB9 connector) towards the tip of the key.
2. Connect the key to the PC interface.
3. Start the FlashStart program.
4. Select the file ".mot" from the new firmware.
5. Press the key "E.P.R"
6. When updating is complete, press OK and disconnect the key
7. Put the slide deviator back in its original position.

7. PAYMENT SYSTEM VERSIONS THAT ARE COMPATIBLE WITH MAXI KEY

	Compas	Zip	Zip Loader	Zip Loader Plus	Zip Caterpay
Reader Statistic Collection	Not available	Z2.4.3 or higher	ZC2.1.0 or higher	Not available	Not available
DB9 Statistic Collection	Any version	Any version	ZC2.1.0 or higher	Any version	Any version
Firmware updating	Not available	Any version	Any version	Any version	Any version
Parameter Programming	Not available	Z2.4.3 or higher	ZC2.1.0 or higher	ATD1 3.0.3 or higher	TISA1 3.0.6 or higher