

TECHNICAL INFORMATION

TYPE NO ES 5100	TYPE Espresso Machine	T.I.-NO ES.. 13/00				
SERIAL NUMBERS AFFECTED		ISSUED BY Documentation/Wittenborg Odense				
SUBJECT ES 5100 Sugar System		ISSUED FOR (X): <table border="1" style="width: 100%; border-collapse: collapse;"> <tr> <td>Action</td> <td style="text-align: center;">X</td> </tr> <tr> <td>Information</td> <td style="text-align: center;">X</td> </tr> </table>	Action	X	Information	X
Action	X					
Information	X					

COMPONENTS CONCERNED

- Sugar System and Sugar Canister - part no. 30895000.

REASON

- The ES 5100 sugar system has to be handled correctly to avoid problems with product dispensings.

INSTRUCTION

- Refer to attached documents on how to refill the sugar system.

ALTERNATIVE SOLUTION

- The ES 5100 can be delivered with a standard ingredient canister for sugar, sugar is then guided into the mixing funnel and dispensed with water - part no. 30727200.

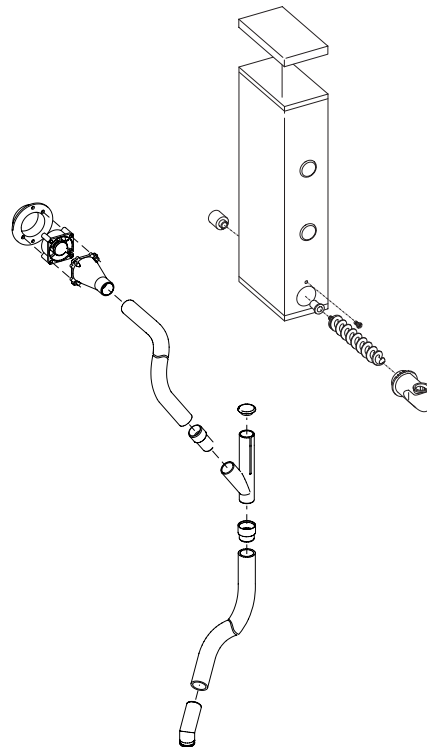
If you wish to change your sugar system part no. 30895000 with the standard ingredient canister for sugar, the following procedure has to be followed:

1. Disassemble sugar system.
2. Mount standard outlet pipe part no. 39630200.
3. Change the configuration, valve no. 1 has to guide water into mixing funnel where it will be mixed with sugar.
4. New default machine settings have to be read into the machine.

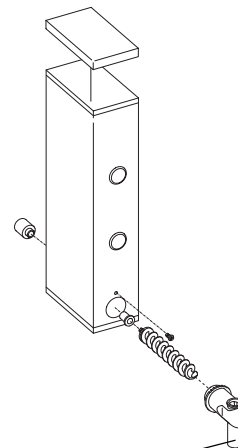
CONTACT PERSON

- Marianne Kristiansen.

Part no. 30895000



Part no. 30727200



Part no. 39630200

12.12.00 DATE : <u> </u>	Charlotte Schreiner PRODUCED BY : <u> </u>
12.12.00 DATE : <u> </u>	Marianne Kristiansen CHECKED BY : <u> </u>

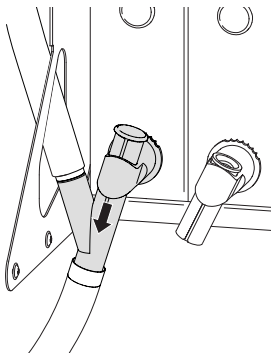
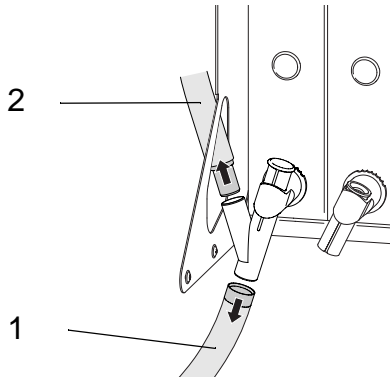
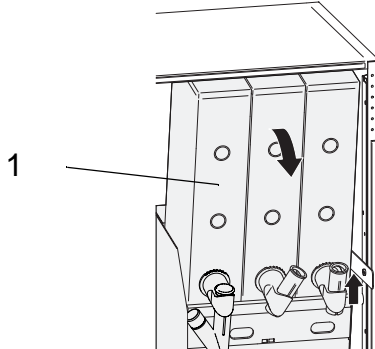
Refilling the sugar canister (ES)

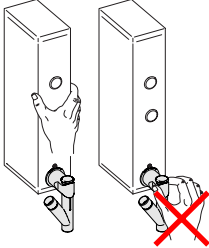
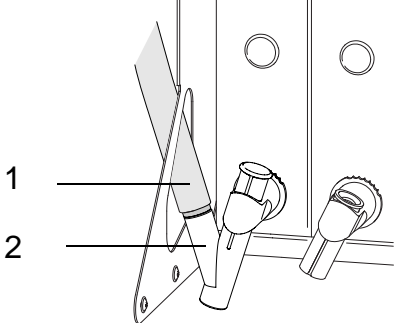
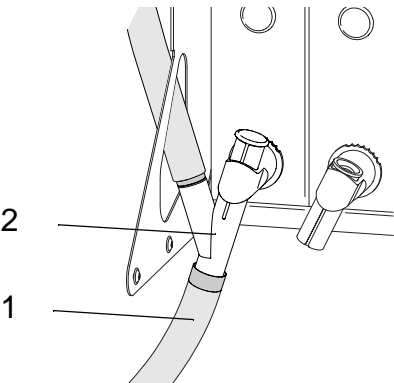
Warning

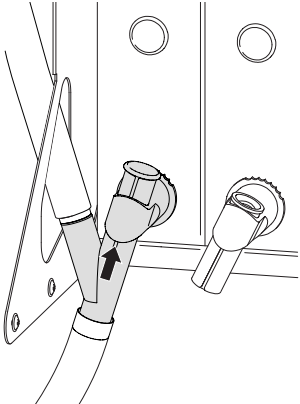
There is a danger of injuries due to sharp edges!

Procedure

Follow these steps to refill the sugar canister:

Step	Action	Illustration
1.	Open the door and turn off the machine (main switch).	
2.	Lock the sugar outlet spout by pushing downwards.	
3.	Remove sugar outlet hose (1) from sugar outlet spout, then remove sugar fan hose (2).	
4.	The sugar canister (1) can be removed by releasing the securing bar by lifting upwards and pulling forwards. The canisters will tilt slightly forwards.	

Step	Action	Illustration
	<p>Note: Never take a grip on the outlet spout when removing canister.</p>	
5.	Refill the sugar canister.	
6.	Wipe off the canister shelf with a damp cloth.	
7.	Reposition canister into its proper position	
8.	<p>Reposition sugar fan hose (1) on outlet spout (2).</p> <p>NB. It is very important to re-mount sugar fan hose properly, otherwise the sugar outlet hose will get clogged up with sugar.</p>	
9.	Reposition sugar outlet hose (1) on outlet spout (2).	

Step	Action	Illustration
10.	The sugar outlet spout must be brought back into its open position by pushing upwards.	

Cleaning the sugar outlet hose

The hose can be cleaned on the inside with a dry tube brush.

If the sugar outlet hose is moist and clogged up with sugar, it *must* be replaced or cleaned.

NB. If the hose has been cleaned, it *must* be completely dry, before it is re-located.