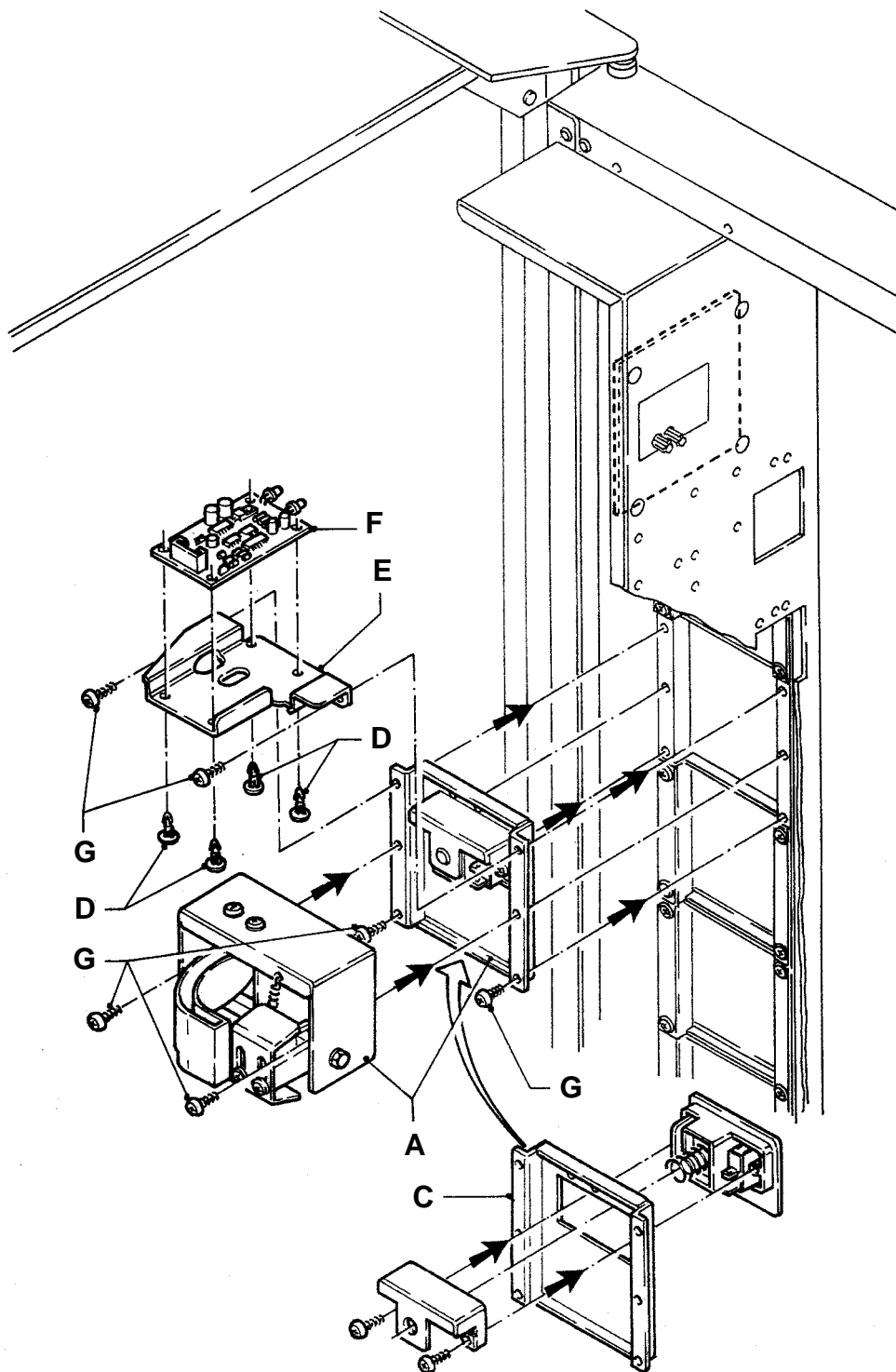


- Disconnect the vending machine from the electrical supply.
- Remove the coin box assembly (Pos. A) by unscrewing the six screws (Pos. G) and replace the cover (Pos. B) with the part kit provided (Pos. C).

DATE

FEED

SIGNATURE

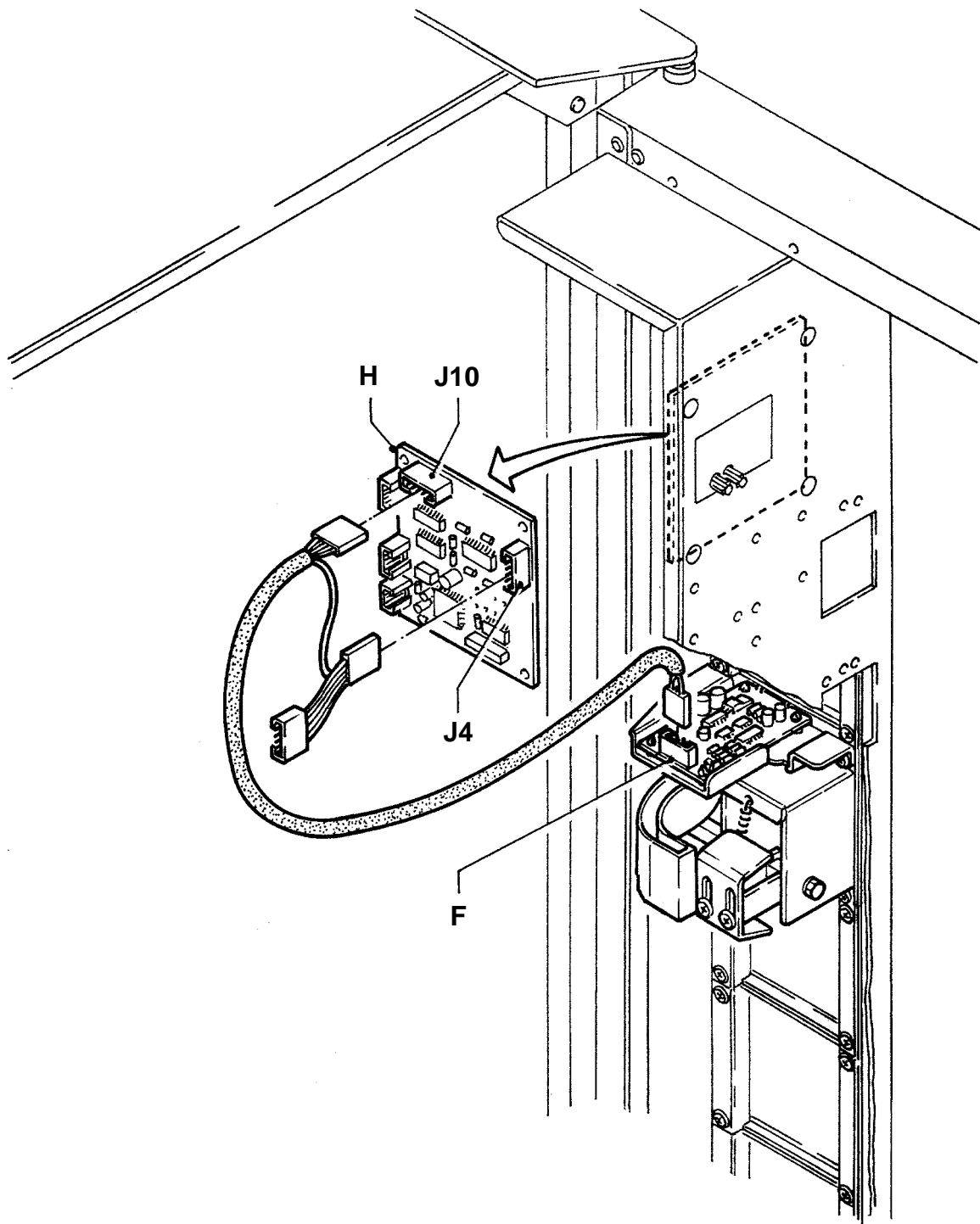


- Insert spacers (Pos. D) into card bracket (Pos. E) and attach infrared card (Pos. F) as shown in figure.
- Re-assemble coin box (Pos. A) also fixing the card bracket (Pos. E) by means of the six screws (Pos. G).

DATE

FEED

SIGNATURE



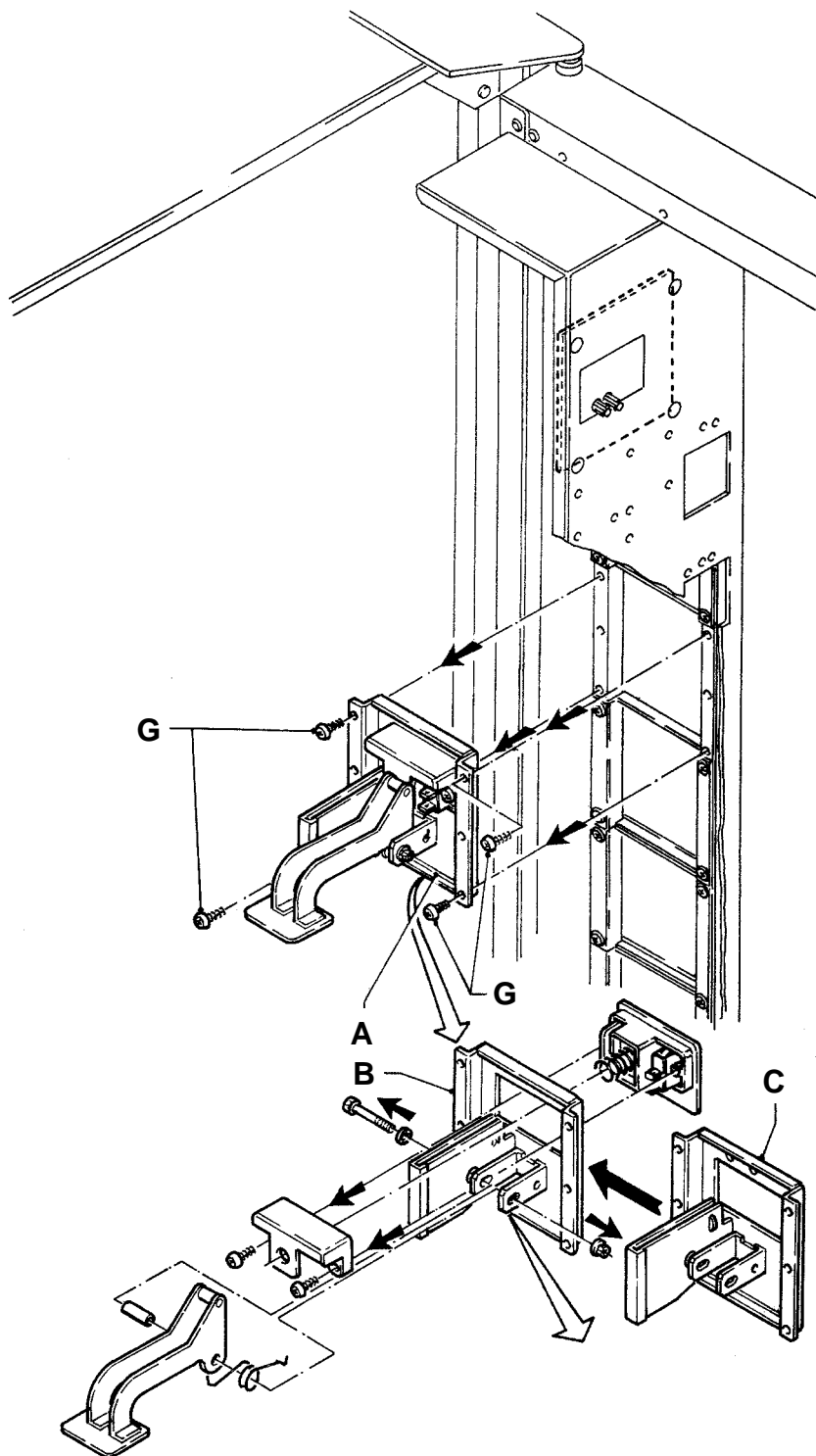
- Connect infrared card (Pos. **F**) to user interface card placed on the door (Pos. **H**) to connectors "J10" and "J4", as shown in figure.
- Select menu data EVADTS.
- Re-connect vending machine to electrical supply.

N.B.: The vending machine must be provided with CPU Card/Actuators Plus. 1-Mb Eprom shall include EVADTS protocol control (see Eprom table).

DATE

FEED

SIGNATURE

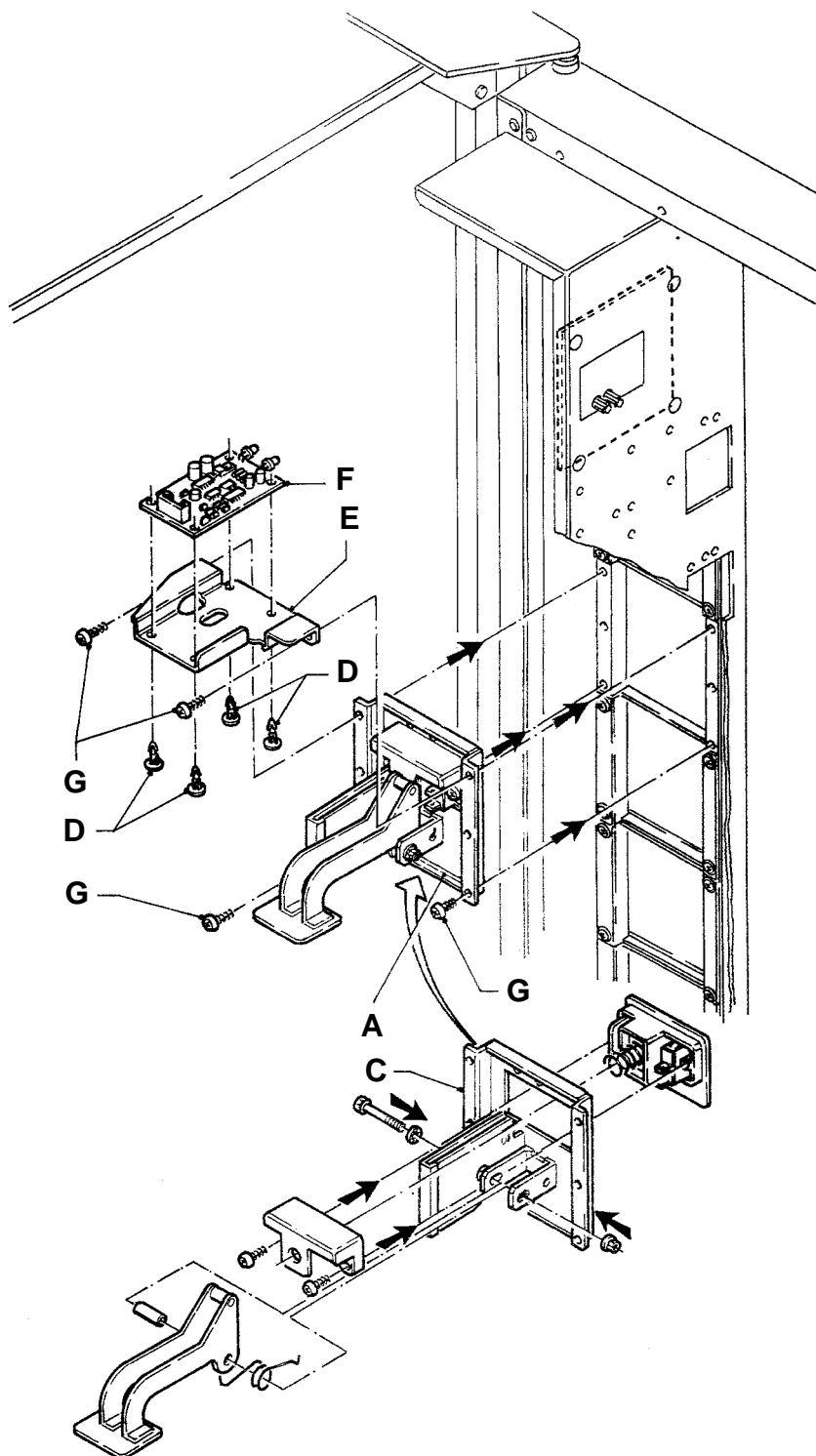


- Disconnect the vending machine from the electrical supply.
- Remove the coin box assembly (Pos. A) by unscrewing the four screws (Pos. G) and replace the cover (Pos. B) with the part kit provided (Pos. C).

DATE

FEED

SIGNATURE

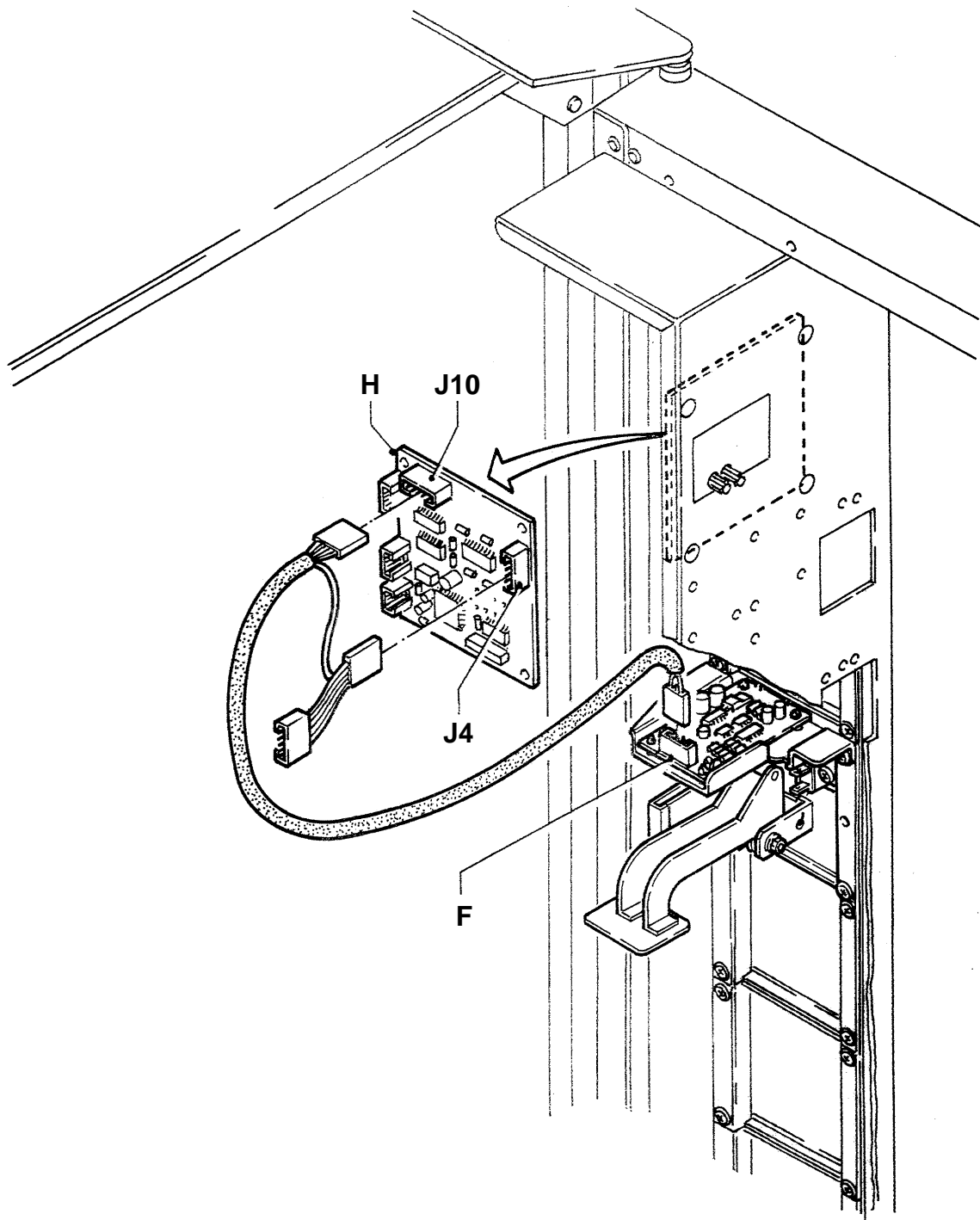


- Insert spacers (Pos. D) into card bracket (Pos. E) and attach infrared card (Pos. F) as shown in figure.
- Re-assemble coin box (Pos. A) also fixing the card bracket (Pos. E) by means of the four screws (Pos. G).

DATE

FEED

SIGNATURE



- Connect infrared card (Pos. **F**) to user interface card placed on the door (Pos. **H**) to connectors "**J10**" and "**J4**", as shown in figure.
- Select menu data EVADTS.
- Re-connect vending machine to electrical supply.

N.B.: The vending machine must be provided with CPU Card/Actuators Plus. 1-Mb Eprom shall include EVADTS protocol control (see Eprom table).

DATE

FEED

SIGNATURE