

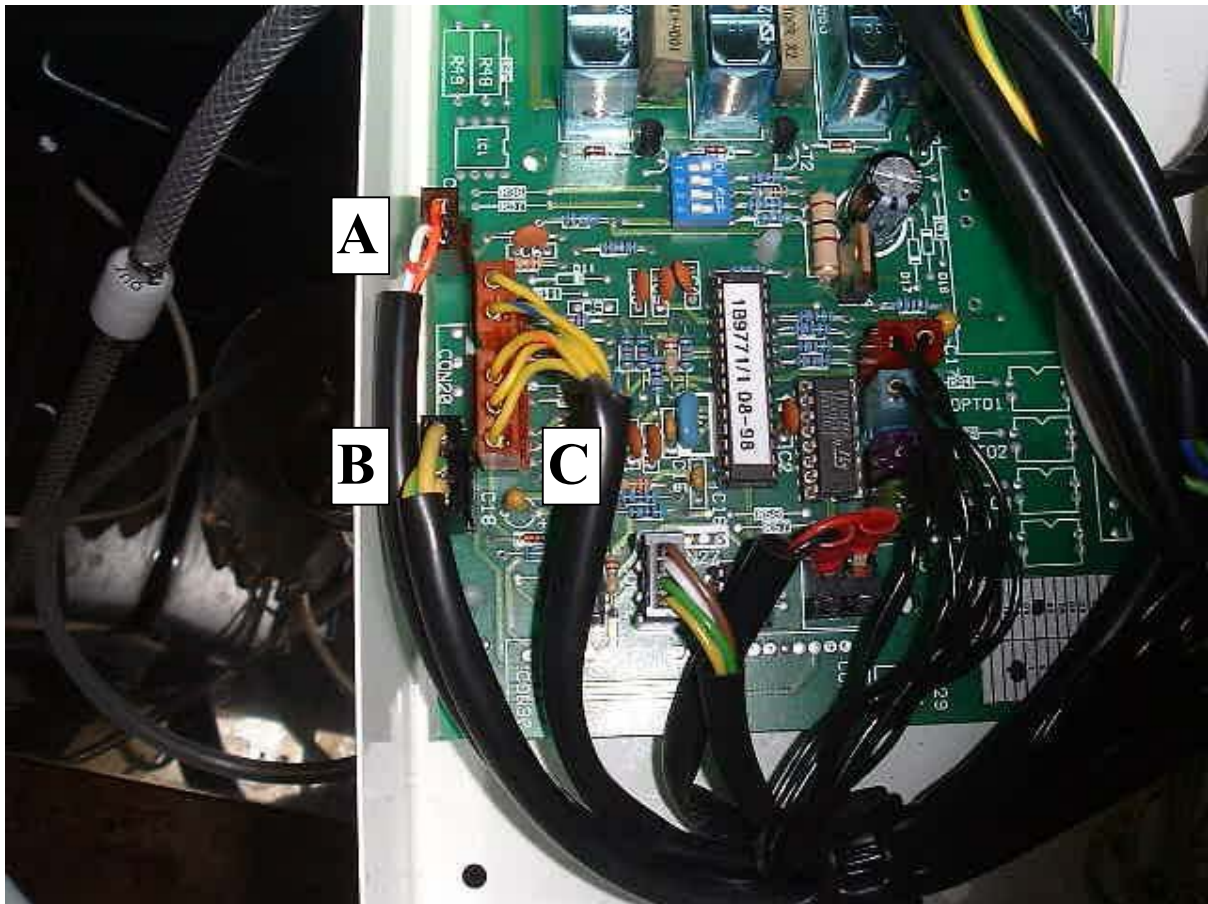
BOOTH SPL360/366 - NECTA ZENITH

Replacing the 1B9200 PCB with the new 3B0885 PCB

Step 1 – Identify the wiring

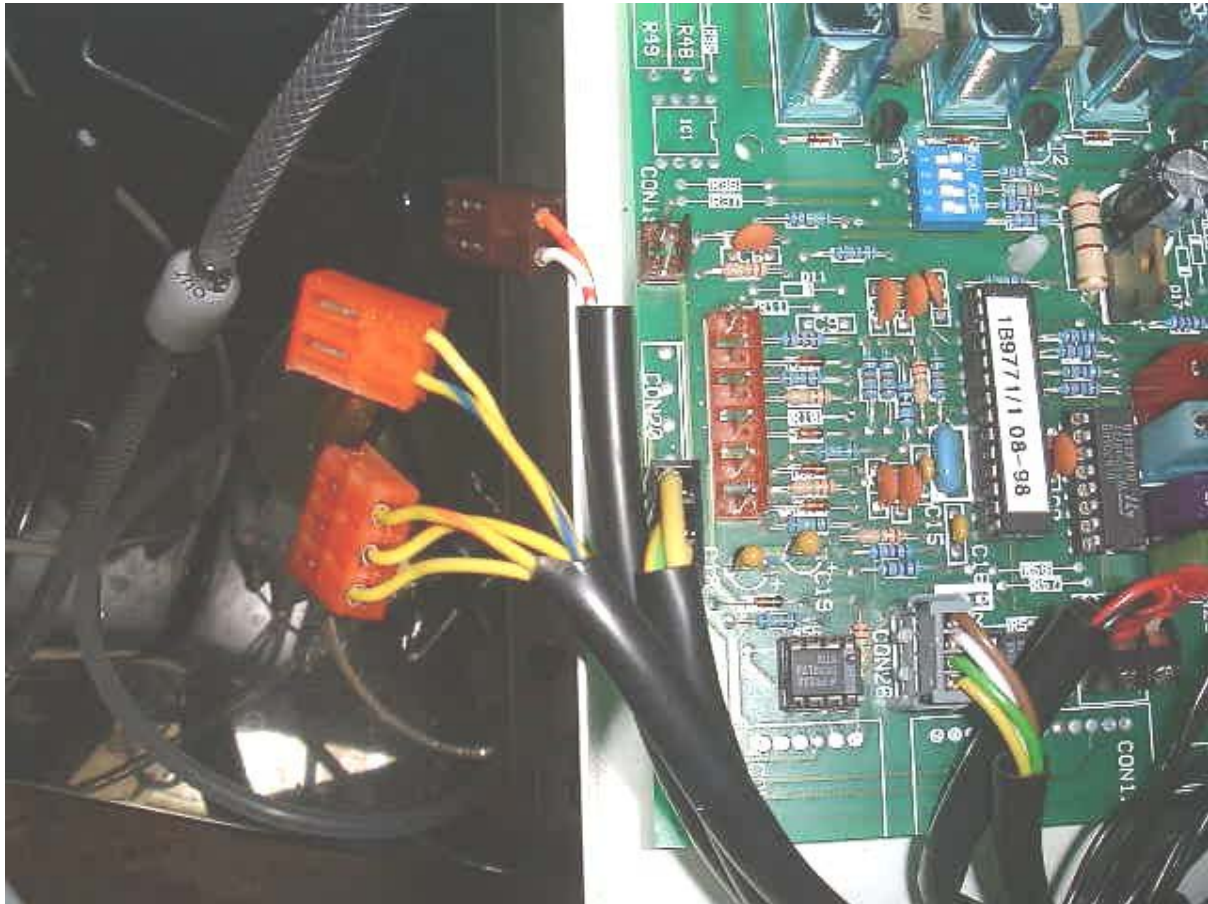
The picture shows the position of the original plugs.

- A. 2W Brown (RD/OR & WH/RD wires) – Can level Probe
- B. 3W Black (GN/YW & two YW wires) – Icebank Probes
- C. 6W Orange (YW, YW/BU, -, YW/OR, YW/RD, YW) – Pressure switch and Syrup Sensors



Step 2 – Split the 6W orange plug into a 2W and a 3W

Split the 6W orange plug by cutting it in its unused position – between the YW/BU and YW/OR wires.



Step 3 – Replace the PCB

Remove the original 1B9200 PCB, and fit the new 3B0885.
Replace all the mains wiring & the 4 x 2W plugs (BK wires).

Step 4 – Connecting the modified plugs

- A. The 2W BN plug connects onto the 2W brown connector which is now just above the 3W OR plug.
- B. The 3W BK plug is fitted to its original position.
- C. The “modified” 2W orange plug is now fitted into CON19 (2W WH) on the PCB.
- C. The “modified” 3W orange plug is now fitted into the same place on the PCB, but there is now a 3W YW connector on the PCB.

